



035, 035-1 and 035-G2 tow bar adapters

for all ROADMASTER motorhome-mounted tow bars

Time Tested • Time Proven

Installation Instructions

All specifications are subject to change without notice.

855472-11 04.22

ROADMASTER, Inc. 6110 NE 127th Ave. Vancouver, WA 98682 800-669-9690 Fax 360-735-9300 www.roadmasterinc.com

Before you begin....

WARNING

Confirm that the off-road bumper to which these components will be attached has been approved by the bumper manufacturer for flat (all four wheels on the ground) towing.

If the bumper is not approved for flat towing, it may separate from the towed vehicle.

WARNING

You must use the pins included with this kit to connect the tow bar. Failure to use the included pins could result in non-warranty damage, personal injury or death.

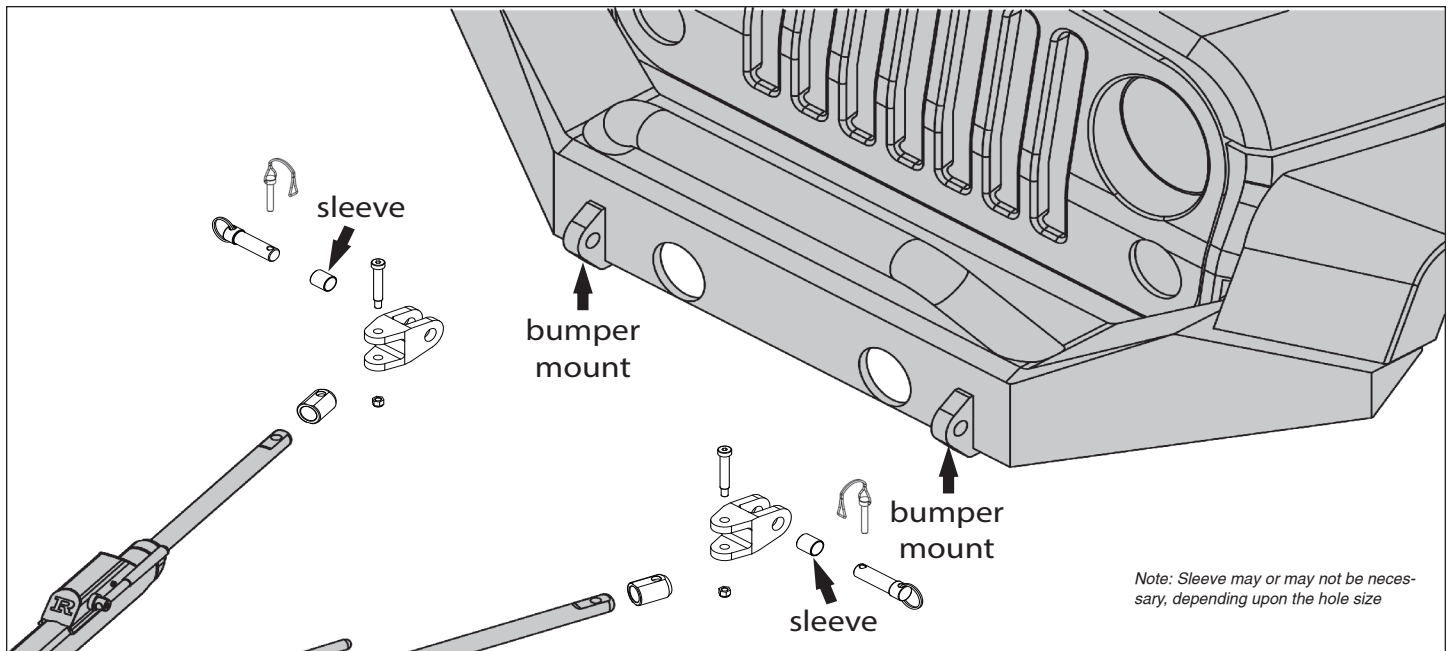
WARNING

Do not use this kit if the hole is too large for the connecting pin. There should not be more than 1/16" of variance between the pin diameter and the hole the pin goes through. Pinning the adapter kit to a hole that is too large may result in non-warranty tow bar damage and eventual failure, personal injury or death.

Required tools

1/4" Allen wrench

9/16" socket wrench



Purpose of this kit

This kit contains the components to connect ROADMASTER motorhome-mounted tow bars to the bumper mounts on off-road bumpers. Use the 035 adapter for bumper mounts that are 3/4" thick; use the 035-1 adapter for bumper mounts that are 1" thick, and 035-G2 for 1" thick mounts that need extended reach (such as Smittybilt Gen 2 bumpers).

WARNING

Read the instructions before installing the kit components. Failure to understand how to install this product could result in property damage, personal injury or even death.



WARNING

Never use any component other than the frame as a connection point for the safety cables. Failure to do so may result in the loss of the towed vehicle. Refer to your tow bar owner's manual for complete instructions.

Installation instructions for...

- ...all Falcon 2 tow bars
- ...all Falcon All-Terrain tow bars
- ...BlackHawk 2 All-Terrain tow bars with serial numbers up to 16,500
- ...Sterling All-Terrain tow bars with serial numbers up to 14,500

1. Use a felt tip pen to mark one of the tow bar arms at the point where the round nut (Figure 1) attaches to the end of the tow bar inner arm (Figure 1).

2. With a 1/4" Allen wrench and a 9/16" socket wrench, remove the lock nut from the bottom of the Allen head shoulder bolt connecting the swivel ear to the round nut (Figure 2).

3. Remove the swivel ear. Discard the shoulder bolt, the washers and the lock nut.

Note: The swivel ear will not be used in this application; however, it should be saved in case the tow bar is ever used to tow other vehicles.

4. Using the replacement shoulder bolt, nylon washers and nylon lock nut, attach the original round nut (and the tow bar) to the tow bar adaptor (Figure 3).

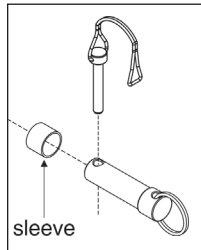
Make certain that the round nut has not moved forward or backward from the position you marked in step 1. If the round nut has moved forward, the replacement shoulder bolt will not fit. If the round nut has moved backward, the round nut will rotate off the tow bar arm. See Figure 4.

WARNING

If the round nut is moved backward on the tow bar arm, the shoulder bolt will not hold the round nut in place. Towing vibrations will cause the round nut to rotate off the tow bar arm. The tow bar arm will detach from the towed vehicle, causing the towed vehicle to separate or to be held by only one tow bar arm.

5. Repeat steps 1 through 4 for the other tow bar arm.

6. Attach both adapters to the bumper mounts with the included hitch pins and lynch pins. **Note: There are a large number of aftermarket bumper suppliers. The hole sizes in the 'D' tabs are not standardized and can vary greatly. This kit is designed to fit 'D' tabs with hole sizes 7/8" and 1". If your hole is larger than 7/8" but less than 1", you will need to enlarge the hole to 1" and use the included sleeve.**

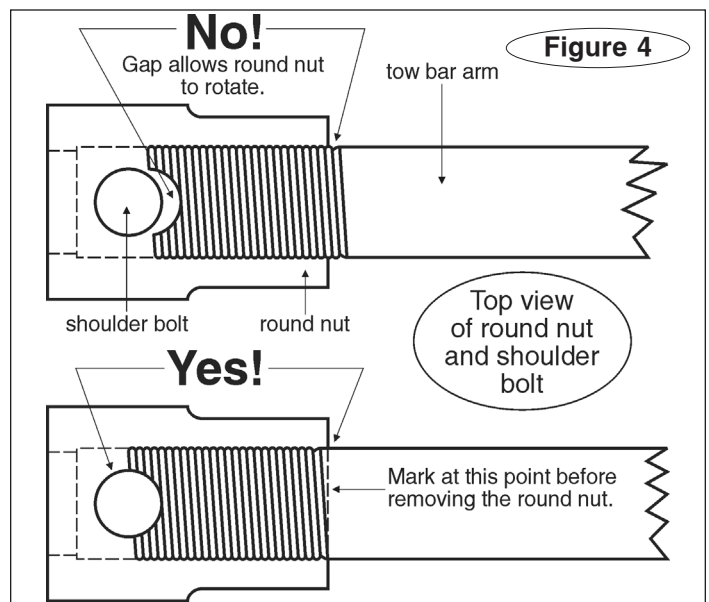
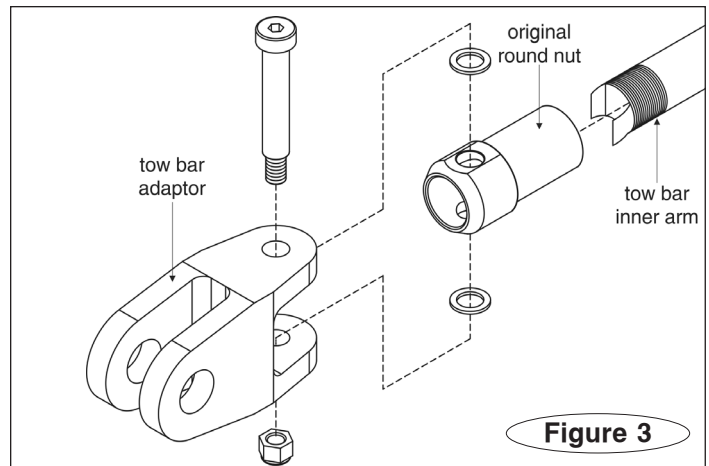
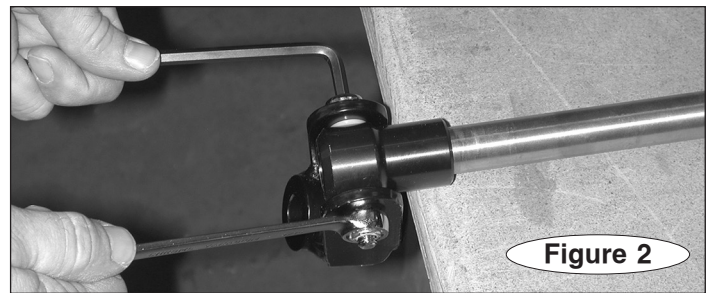
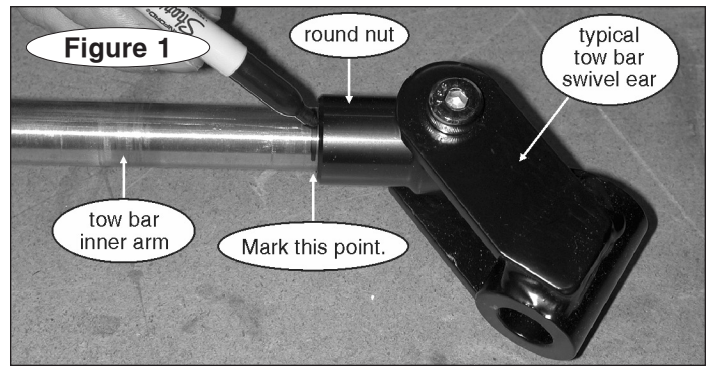


WARNING

You must use the pins included with this kit to connect the tow bar. Failure to use the included pins could result in non-warranty damage, personal injury or death.

WARNING

Do not use this kit if the hole is too large for the connecting pin. There should not be more than 1/16" of variance between the pin diameter and the hole the pin goes through. Pinning the adapter kit to a hole that is too large may result in non-warranty tow bar damage and eventual failure, personal injury or death.



7. Read the tow bar owner's manual and follow all connection, maintenance and safety information.

Installation instructions for...

- ...Sterling All-Terrain tow bars with serial numbers of 14,501 and above
- ...BlackHawk 2 All-Terrain tow bars with serial numbers above 16,500
- ...Nighthawk tow bars, all serial numbers

1. With a 1/4" Allen wrench and a 9/16" socket wrench, remove the lock nut from the bottom of the Allen head shoulder bolt connecting the swivel ear to the inner arm (Figure 1).

2. Remove the shoulder bolt, washers, lock nut and swivel ear.

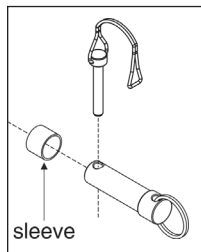
Note: Discard the shoulder bolt, the washers and the lock nut. The swivel ear will not be used in this application; however, it should be saved in case the tow bar is ever used to tow other vehicles.

3. Position the round nut adapter (Figure 3) at the end of the tow bar inner arm.

4. Using the replacement shoulder bolt, nylon washers and nylon lock nut, attach the round nut adapter to the tow bar adapter (Figure 2).

5. Repeat steps 1 through 4 for the other tow bar arm.

6. Attach both adapters to the bumper mounts with the included hitch pins and linch pins. **Note: There are a large number of aftermarket bumper suppliers. The hole sizes in the 'D' tabs are not standardized and can vary greatly. This kit is designed to fit 'D' tabs with holes sizes 7/8" and 1". If your hole is larger than 7/8" but less than 1", you will need to enlarge the hole to 1" and use the included sleeve.**



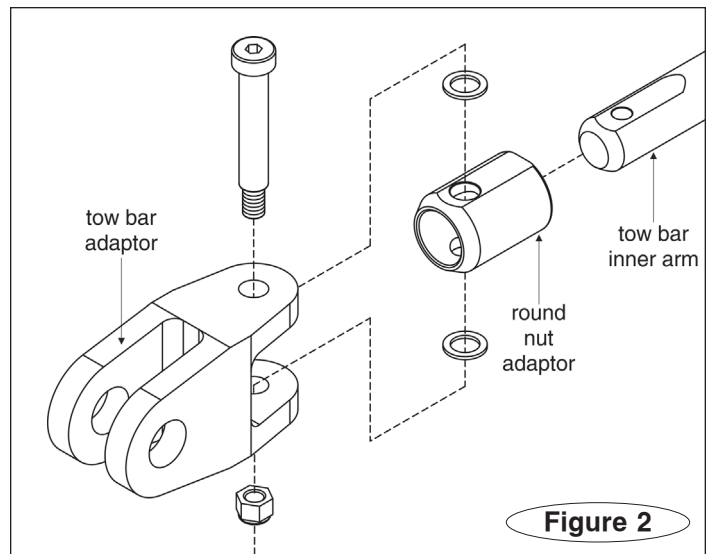
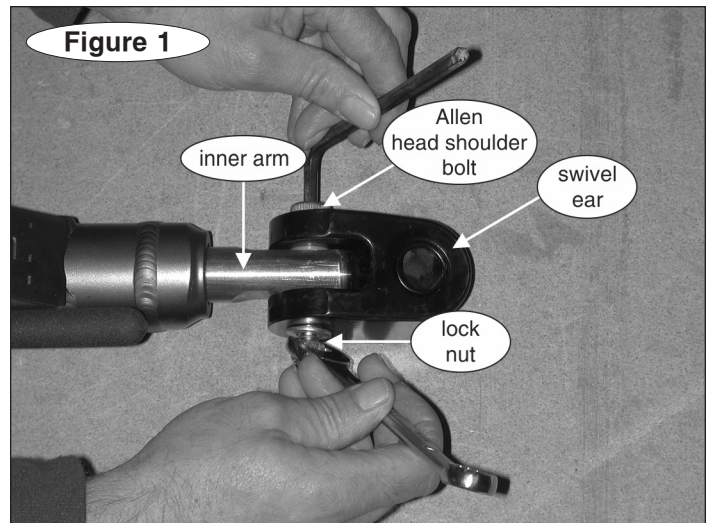
WARNING

You must use the pins included with this kit to connect the tow bar. Failure to use the included pins could result in non-warranty damage, personal injury or death.

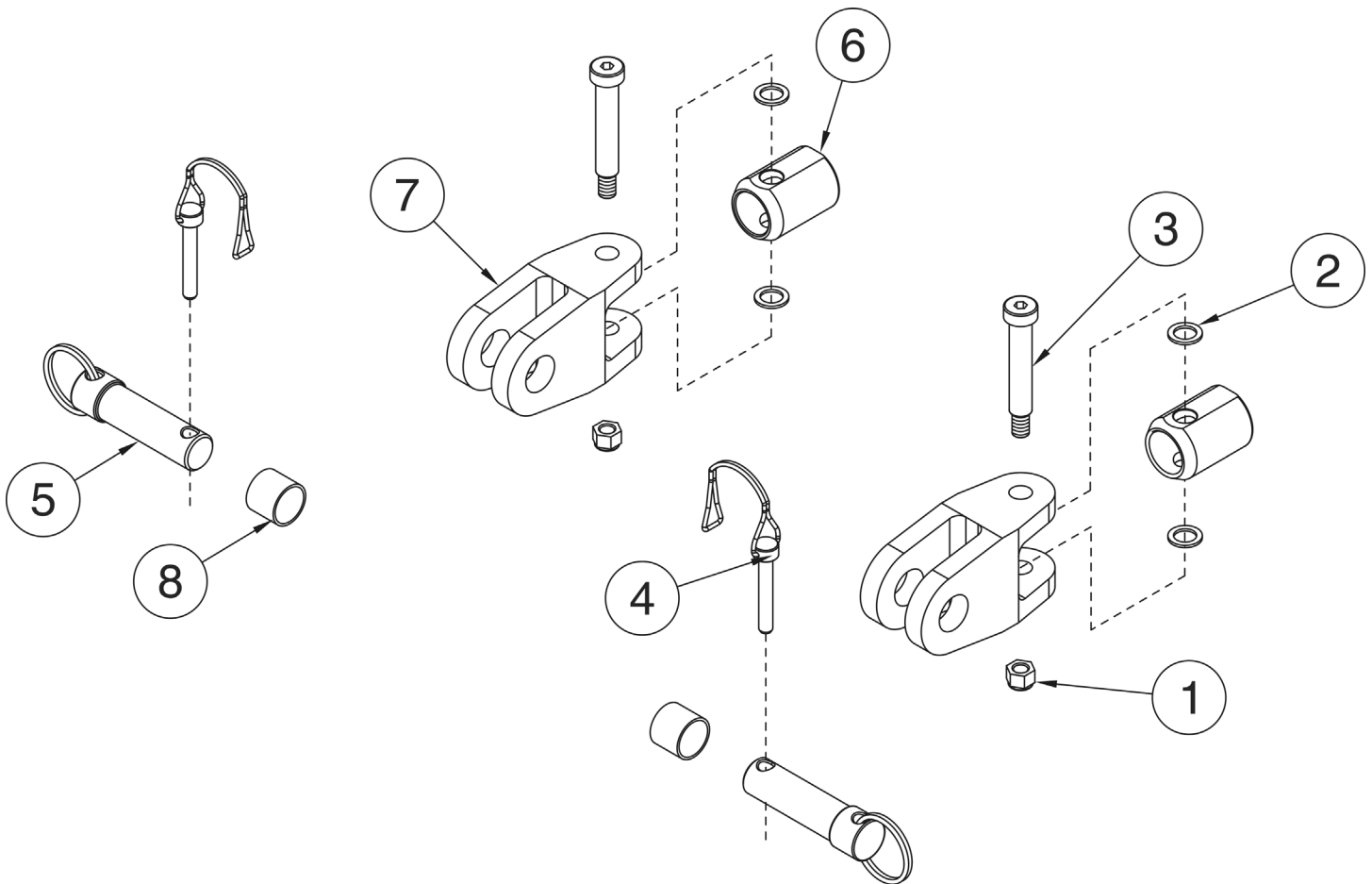
WARNING

Do not use this kit if the hole is too large for the connecting pin. There should not be more than 1/16" of variance between the pin diameter and the hole the pin goes through. Pinning the adapter kit to a hole that is too large may result in non-warranty tow bar damage and eventual failure, personal injury or death.

7. Read the tow bar owner's manual and follow all connection, maintenance and safety information.



035, 035-1 and 035-G2 adapter parts



Item	Quantity	Part Number	Description
1	2	350255-00	3/8" nylon lock nut
2	4	350356-00	nylon washer
3	2	357053-00	1/2" x 2 1/4" shoulder bolt for 035-G2 applications
	2	350376-20	1/2" x 2 1/2" shoulder bolt for 035 and 035-1 applications
4	2	356997-00	5/16" D-clip safety pin
5	2	910048-50	hitch pin
6	2	A001818	round nut adapter
7	2	A005019	035 tow bar adapter
	2	A005097	035-1 tow bar adapter
8	2	A005020	035 sleeve
	2	A005116	035-1 and 035-G2 sleeve