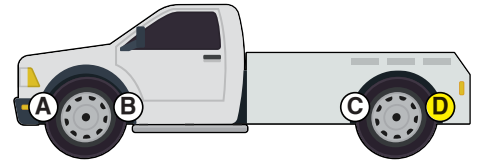




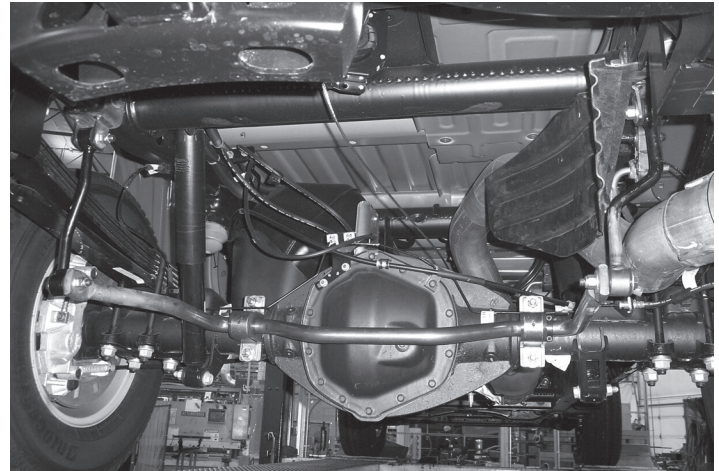
Installation Instructions



Rear Anti-Sway Bar for Chevy Silverado and GMC Sierra 1500/2500

part #1109-169
1 1/4" diameter

Thank you for purchasing this anti-sway bar kit. Please read through these instructions before installation.



INTRODUCTION

Thank you for purchasing the rear anti-sway bar kit. This kit is designed to improve the handling characteristics of your Silverado or Sierra by reducing the body roll and balancing the weight transfer during cornering. The anti-sway bar kit is engineered for long life and trouble-free performance.

All the hardware needed for installation is included in this kit. Refer to the PARTS LIST in these instructions to identify the parts.

SUGGESTED TOOLS

The following tools are suggested to complete the installation procedures:

- General hand tools
- Torque wrench

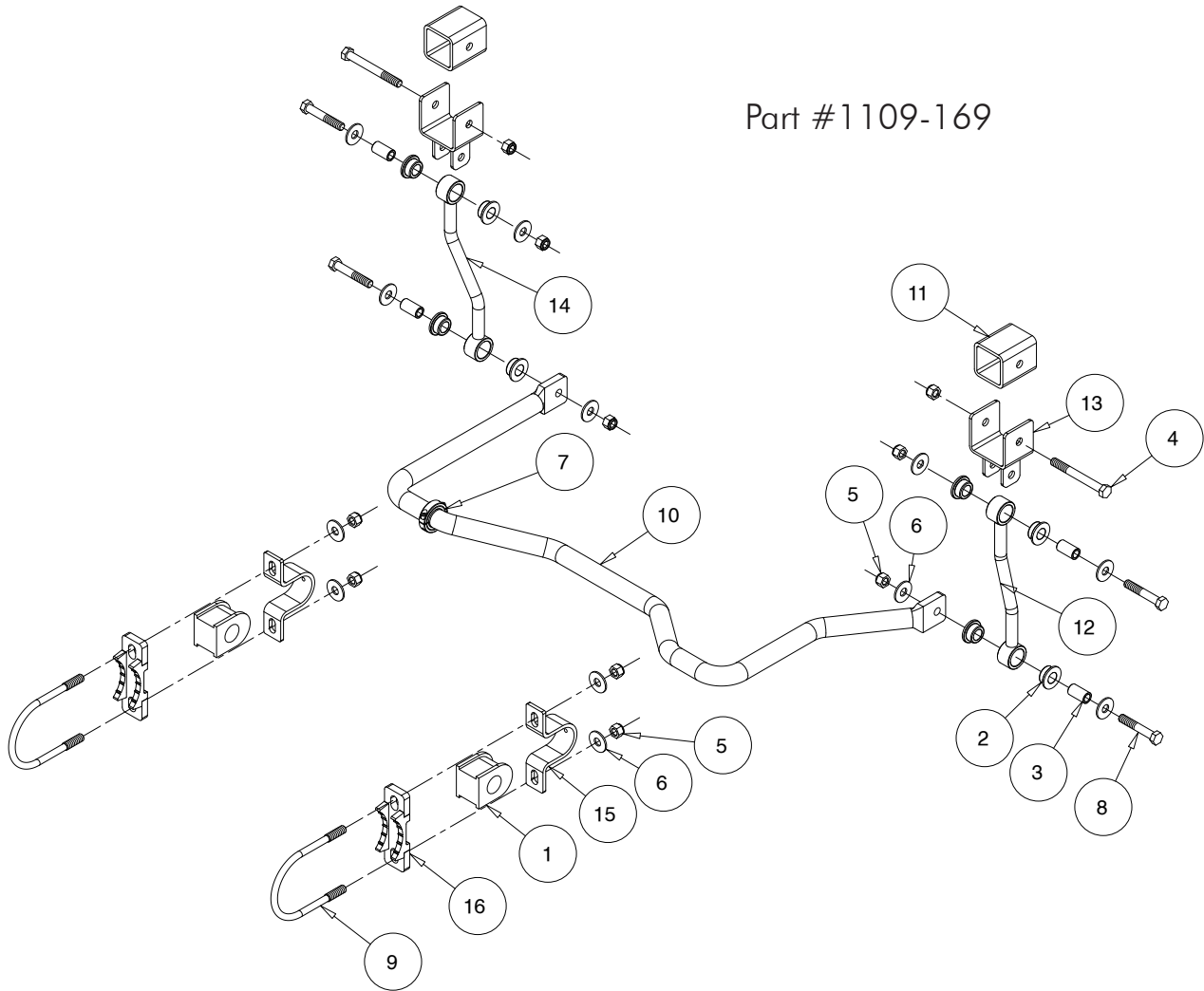
WARNING

Failure to follow these instructions can result in property damage, personal injury or even death.

- If raising the vehicle to install the anti-sway bar, always support the vehicle with jack stands at both frame rails or at the rear axle before working underneath. Ensure that the jack stands are securely positioned, and are rated at or above the weight of the vehicle.
- The installer must read the instructions and use all bolts and parts supplied. Use only the parts supplied by ROADMASTER to install this kit.
- Minor modifications are sometimes necessary due to slight vehicle variations, even for the same year, make and model.
- Regardless of year, make and model, a wide range of options for specific applications may or may not interfere with the installation. It is the installer's responsibility to make certain that equipment is not damaged once the suspension solution travels through the full range of motion. Failure to ensure adequate clearance could result in non-warranty property damage, personal injury or even death.
- If running changes were made by the manufacturer after this kit was designed, there may be weldments, braces, gussets, or other structural items which interfere with the installation. It is the installer's responsibility to allow for these running changes without sacrificing the structural integrity of the anti-sway bar. Failure to securely fasten the anti-sway bar could result in property damage, personal injury or even death.
- ROADMASTER will not be responsible for any damage or injury resulting from any modification or alteration.
- Check ALL the fasteners for tightness before and after road testing the vehicle.
- Do not use this document for custom fabrication, as it may not show all parts or structural components.
- Do not use an air impact wrench when re-installing bolts, as stripped threads may result.
- This anti-sway bar is only warranted for the original installation. Installing a used anti-sway bar on another vehicle is not recommended and will void the warranty.

PARTS LIST

Part #1109-169



ITEM	QTY	DESCRIPTION	PART
1	2	BUSHING	205221-10
2	8	BUSHING	205223-50
3	4	BUSHING SLEEVE	205522-00
4	2	1/2-13 x 4 1/2" BOLT - GRADE 8 YELLOW ZINC	350106-10
5	10	1/2-13 NYLON INSERT LOCK NUT	350735-00
6	12	1/2" FLAT WASHER	350308-00
7	1	SPLIT COLLAR	350530-25
8	4	1/2-13 x 3" BOLT	350706-00
9	2	U-BOLT	357025-00
10	1	ANTI-SWAY BAR	580344-00
11	2	FRAME INSERT	B1027
12	1	END LINK	B699
13	2	FRAME BRACKET	B744
14	1	END LINK	B745
15	2	BUSHING CLAMP	B914
16	2	AXLE CLAMP	B618
17	1	AQUALUBE	400011-30
18	1	LOCTITE	200544-00

INSTALLATION

The following instructions must be followed in the order listed to ensure a proper installation and to preserve the ROADMASTER warranty.

1. Remove the spare tire and tire guard.
2. Raise the rear of the vehicle, remove the rear tires and place jackstands under the rear axle. The ideal stand location is at the outermost point under the spring plates.
3. Install the frame brackets using the existing holes in the frame and by bolting from the outside using the supplied $\frac{1}{2}$ " x $4\frac{1}{2}$ " bolt, two flat washers and nut on each side (Fig.1 — driver's side).
4. Install the endlinks to the frame brackets. The driver's endlink is one with the weaker degree of bend. Install it to the driver's side bracket by bolting from the outside using the supplied $\frac{1}{2}$ " x 3" bolt, two flat washers and nut (Fig.2). *Note: The bend should point toward the outside of the vehicle.*
5. Repeat step 4 for the passenger side of the vehicle. Figure 3 shows the passenger side endlink installed to the frame bracket.
6. Install the $\frac{1}{2}$ " U-bolts and the axle clamp around the axle. Make certain that the U-bolts go behind the brake lines (Fig.4 — passenger side). *Note: It is helpful to use a second person for this step. Let the arms hang straight down for now.*

Figure 1

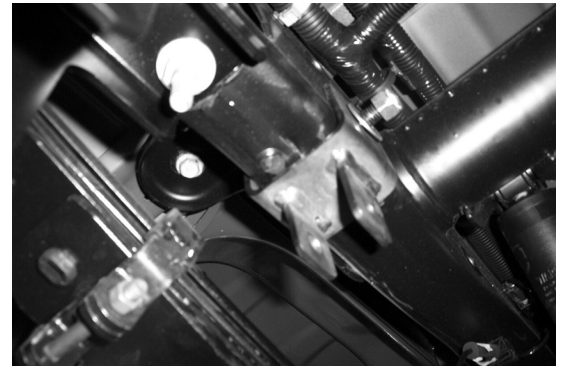


Figure 2



Figure 3



Figure 4



WARNING

The anti-sway bar is not a load-bearing component

Do not tow or hoist the vehicle using the anti-sway bar or its mounting brackets as attachment points. The anti-sway bar is not designed to carry the weight of the vehicle and may collapse, which will damage the anti-sway bar components, the suspension, or other components. The vehicle will detach or fall, which may cause severe personal injury. Failure to follow these instructions may result in property damage, personal injury or even death.

INSTALLATION

The following instructions must be followed in the order listed to ensure a proper installation and to preserve the ROADMASTER warranty.

7. Raise the bar into place and install it to the endlink on each side using the supplied $\frac{1}{2}$ " x 3" bolt, two flat washers and nut (Fig.5 — driver's side).
8. Now, slide the sway bar about $\frac{3}{8}$ " away from the driver's side shock. The red arrow in Figure 6 shows the spot where $\frac{3}{8}$ " should be measured. Now, install the supplied collar on the outside passenger side bushing clamp to prevent slippage toward the shock (Fig.7).
9. Tighten all bolts.
10. Reinstall the tire guard. Due to manufacturing variances, you may need to use a cut off wheel to trim the guard to allow clearance for the frame bracket. If this is the case, use the red lines in Figure 8 as a guide for trimming.
11. Reinstall the spare tire.
12. Road test. Listen for noises. Reinspect fasteners.

WARNING

The anti-sway bar is not a load-bearing component

Do not tow or hoist the vehicle using the anti-sway bar or its mounting brackets as attachment points. The anti-sway bar is not designed to carry the weight of the vehicle and may collapse, which will damage the anti-sway bar components, the suspension, or other components. The vehicle will detach or fall, which may cause severe personal injury. Failure to follow these instructions may result in property damage, personal injury or even death.

Figure 5

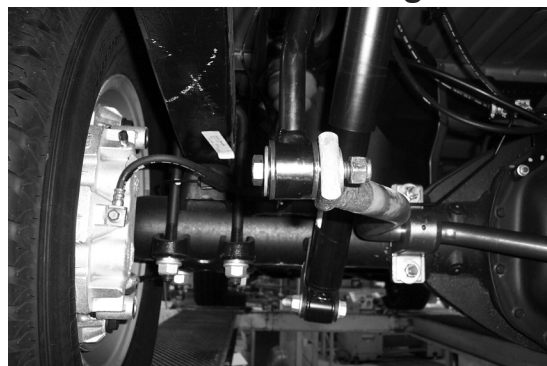


Figure 6



Figure 7

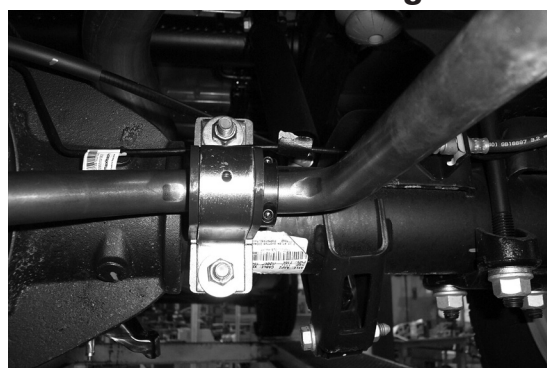


Figure 8

