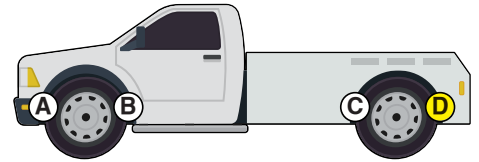




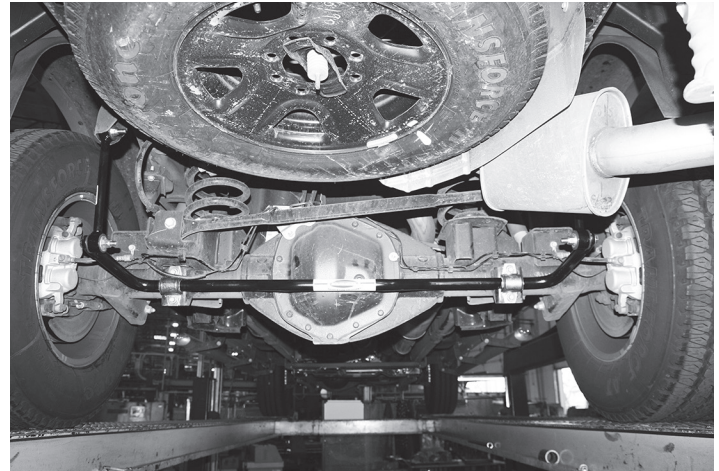
Installation Instructions



Factory Replacement Anti-Sway Bar Kit for Dodge 1500

part #1129-135
(1-1/8" diameter)

*Thank you for purchasing this
anti-sway bar kit. Please read
through these
instructions before installation.*



INTRODUCTION

Thank you for purchasing this anti-sway bar kit. This kit is designed to improve the handling characteristics of your vehicle by reducing the body roll and balancing the weight transfer during cornering. The anti-sway bar kit is engineered for long life and trouble-free performance.

All the hardware needed for the installation is included in this kit. Refer to the PARTS LIST in these instructions to identify the parts.

SUGGESTED TOOLS

The following tools are suggested to complete the installation procedures:

- general shop tools
- 18mm wrench
- torque wrench
- 15mm socket

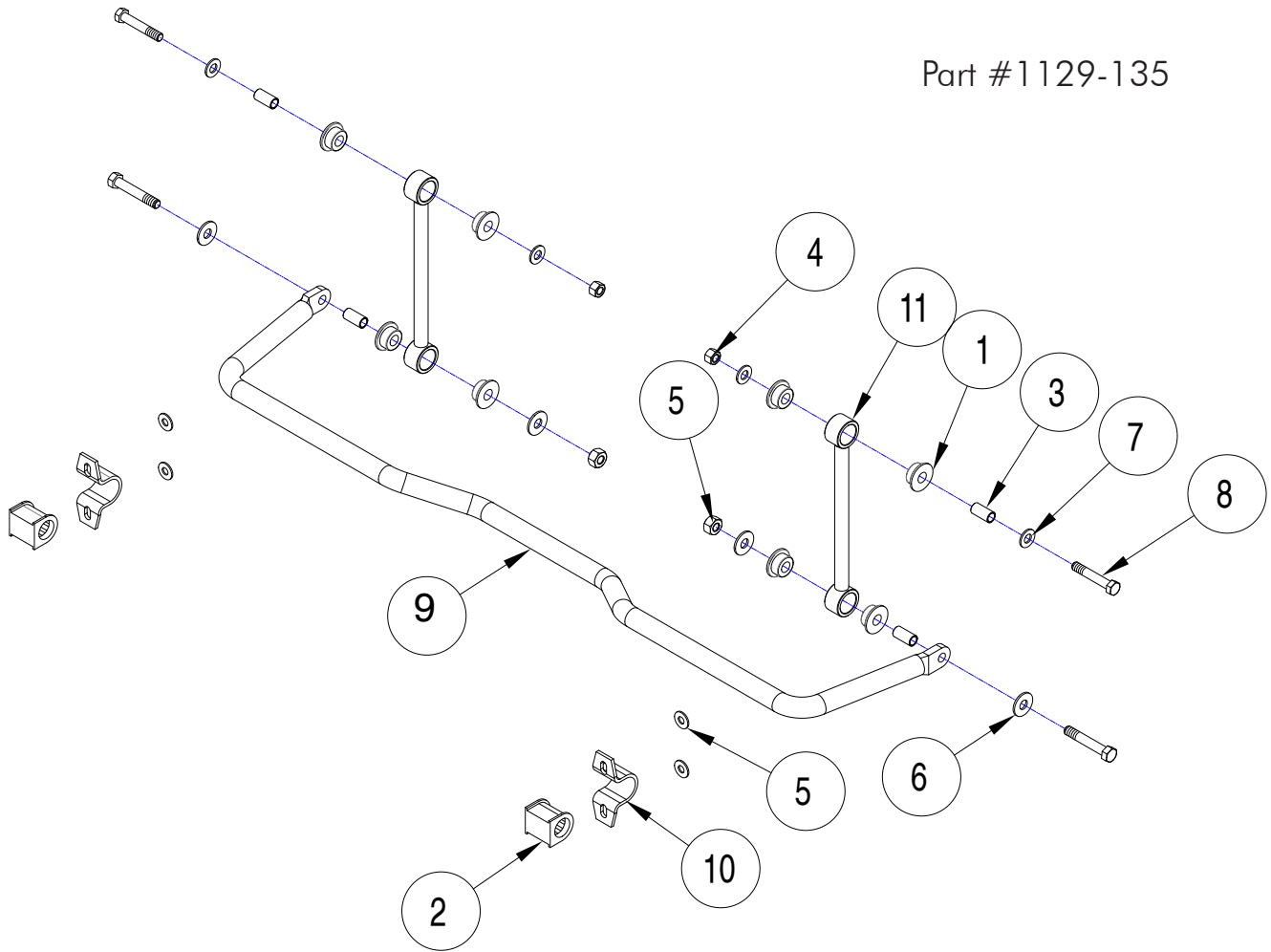
WARNING

Failure to follow these instructions can result in property damage, personal injury or even death.

- If raising the vehicle to install the anti-sway bar, always support the vehicle with jack stands at both frame rails or at the rear axle before working underneath. Ensure that the jack stands are securely positioned, and are rated at or above the weight of the vehicle.
- The installer must read the instructions and use all bolts and parts supplied. Use only the parts supplied by ROADMASTER to install this kit.
- Minor modifications are sometimes necessary due to slight vehicle variations, even for the same year, make and model.
- Regardless of year, make and model, a wide range of options for specific applications may or may not interfere with the installation. It is the installer's responsibility to make certain that equipment is not damaged once the suspension solution travels through the full range of motion. Failure to ensure adequate clearance could result in non-warranty property damage, personal injury or even death.
- If running changes were made by the manufacturer after this kit was designed, there may be weldments, braces, gussets, or other structural items which interfere with the installation. It is the installer's responsibility to allow for these running changes without sacrificing the structural integrity of the anti-sway bar. Failure to securely fasten the anti-sway bar could result in property damage, personal injury or even death.
- ROADMASTER will not be responsible for any damage or injury resulting from any modification or alteration.
- Check ALL the fasteners for tightness before and after road testing the vehicle.
- Do not use this document for custom fabrication, as it may not show all parts or structural components.
- Do not use an air impact wrench when re-installing bolts, as stripped threads may result.
- This anti-sway bar is only warranted for the original installation. Installing a used anti-sway bar on another vehicle is not recommended and will void the warranty.

PARTS LIST

Part #1129-135



ITEM	QTY.	DESCRIPTION	PART NUMBER
1.....	8....	BUSHING.....	205223-50
2.....	2....	BUSHING.....	205385-10
3.....	4....	BUSHING SLEEVE.....	205522-00
4.....	4....	1/2-13 NYLON INSERT LOCK NUT.....	350259-00
5.....	4....	3/8" HARDENED FLAT WASHER.....	350304-10
6.....	4....	1/2" FLAT WASHER.....	350308-00
7.....	4....	1/2" SAE WASHER.....	350308-20
8.....	4....	1/2-13 x 3" BOLT - GRADE 8.....	350706-00
9.....	1....	ANTI-SWAY BAR.....	580264-00
10....	2....	BUSHING CLAMP.....	B181
11....	2....	END LINK.....	B315
12....	1....	THREADLOCKER.....	200544-00
13....	1....	AQUALUBE.....	400011-30

INSTALLATION

The following instructions must be followed in the order listed to ensure a proper installation and to preserve the ROADMASTER warranty.

1. Unload the suspension.

Before beginning this installation, unload the suspension to allow safe access to the underside of the vehicle. You can use a hoist or jack stands to accomplish this.



WARNING

Always support the vehicle by using a hoist or by using securely positioned jack stands at both frame rails or at the rear axle, before working underneath. Ensure that the hoist or jack stands are rated at or above the weight of the vehicle.

Failure to follow these instructions may cause property damage, personal injury or even death.

2. Remove the existing anti-sway bar, end links and clamps.

Remove the factory anti-sway bar (Figure 1). Use a 15mm socket to remove the bar at the axle and an 18mm wrench to remove it from the endlink (Figure 2). Then, remove the end links and the clamps, saving the clamp hardware for replacement in step 6.

Note: disconnect the bar from the endlink at the bottom only.

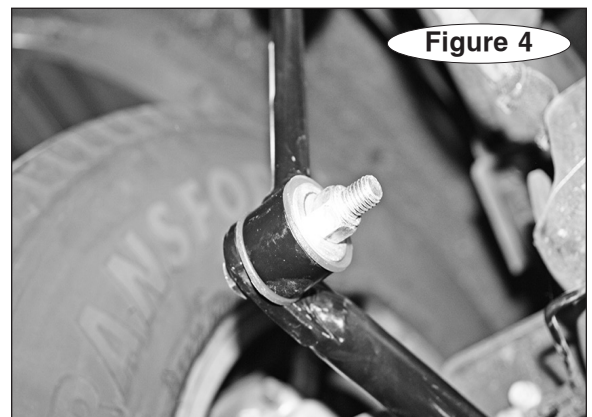
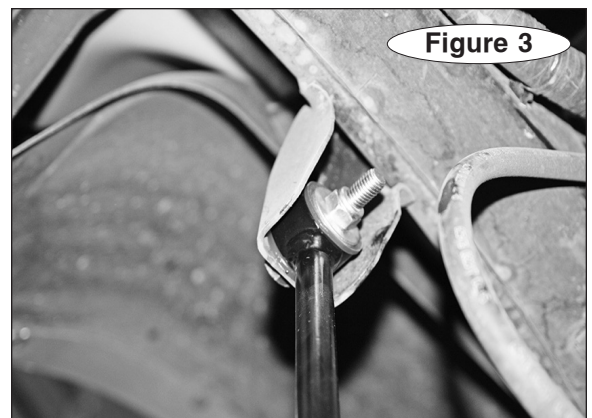
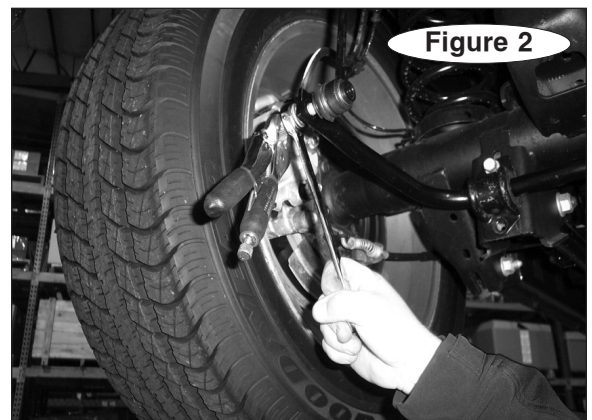
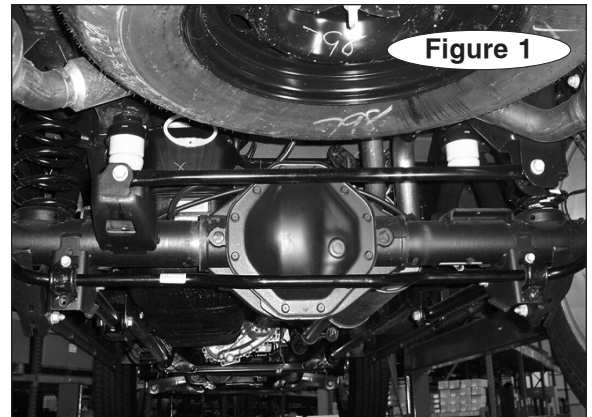
3. Install the new end links.

Hang the end links from the factory mounts and bolt them into place on each side using the supplied 1/2" x 3" bolt and 1/2" SAE washer, and finish with another 1/2" SAE washer and a 1/2" locknut (Figure 3).

4. Hang the new sway bar.

Hang the new bar from the end links and bolt it into place using the supplied 1/2" x 3" bolt and a 1/2" flat washer. Finish with another 1/2" flat washer and a 1/2" locknut (Figure 4).

continued next page

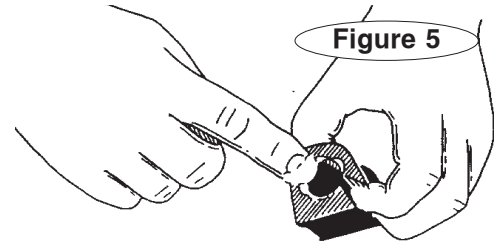


INSTALLATION

continued from preceding page

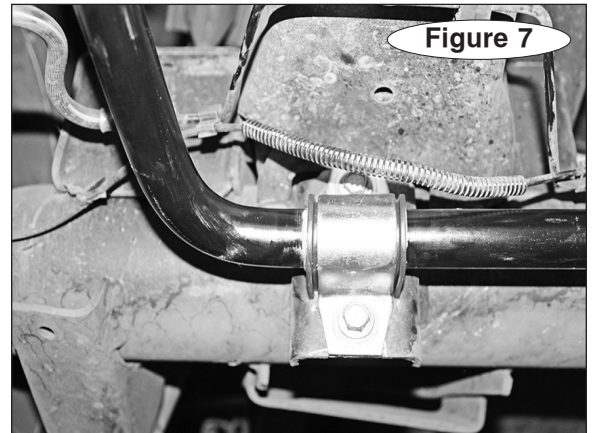
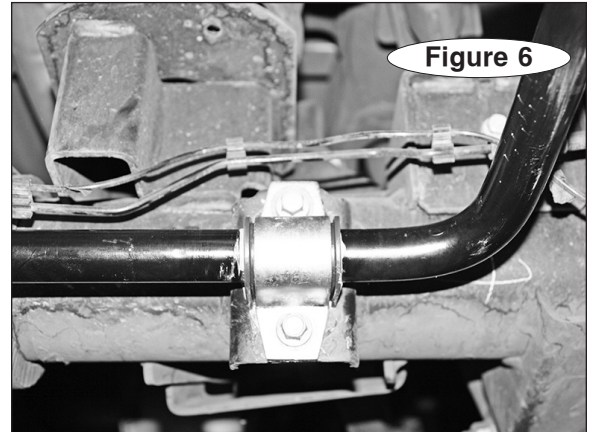
5. Install the bushings.

Lubricate the inside of the bushings with the provided grease (Figure 5) and then, push the bushings over the bar.



6. Install the bushing clamps.

Loosely bolt each bushing clamp (Figures 5 and 6) into place using the factory hardware you removed in step 2 and the supplied 3/8" flat washers.



CAUTION

Do not allow the anti-sway bar to hit the drive-shaft, or the driveshaft may be damaged, which may cause unwanted vibration while driving the vehicle.

7. Use Loctite on all of the bolts Then, tighten to the torque specs below and road test the vehicle.



WARNING

After road testing, re-check all fasteners for proper tightness — if a fastener has worked loose or fallen off, re-tighten or replace it. Without all kit components properly tightened or in place, the anti-sway bar will not stabilize the vehicle at full capacity, which may cause reduced cornering or other reductions in vehicle handling or performance.

Failure to follow these instructions may cause property damage, personal injury or even death.

BOLT TORQUE REQUIREMENTS

STANDARD BOLTS			U-BOLTS	
Thread	Grade	Torque	Thread	Torque
3/8.....	5.....	30 lb-ft	3/8-24	35 lb-ft
7/16.....	5.....	50 lb-ft	1/2-20	70 lb-ft
1/2.....	5.....	75 lb-ft	5/8-18	140 lb-ft
5/8.....	5.....	140 lb-ft	3/4-16	250 lb-ft
			7/8-14	400 lb-ft

Note: Endlink bolts use grommets and should NOT be torqued. Tighten these bolts by hand until the grommet starts to deform. Also, these torque values are intended as general guidelines. Roadmaster does not warrant this information to be accurate for all applications and disclaims all liability for any claims or damages which may result from its use.