

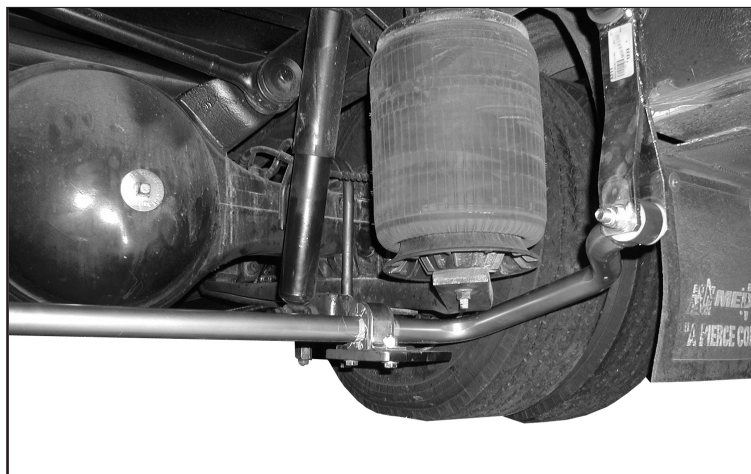


# Installation Instructions

Thank you for purchasing this anti-sway bar kit. Please read through these instructions before installation.

## Rear Anti-Sway Bar Kit for the International Navistar 4300

part #1179-109, 1179-110  
1-5/8" diameter  
(axle plates not included with the 1179-110 kit)



## INTRODUCTION

Thank you for purchasing this anti-sway bar kit. This kit is designed to improve the handling characteristics of your Navistar by reducing the body roll and balancing the weight transfer during cornering. The anti-sway bar kit is engineered for long life and trouble-free performance. For maximum suspension control, use this kit along with our front anti-sway bar kit.

All the hardware needed for installation is included in this kit. Refer to the PARTS LIST in these instructions to identify the parts.

## SUGGESTED TOOLS

The following tools are suggested to complete the installation procedures:

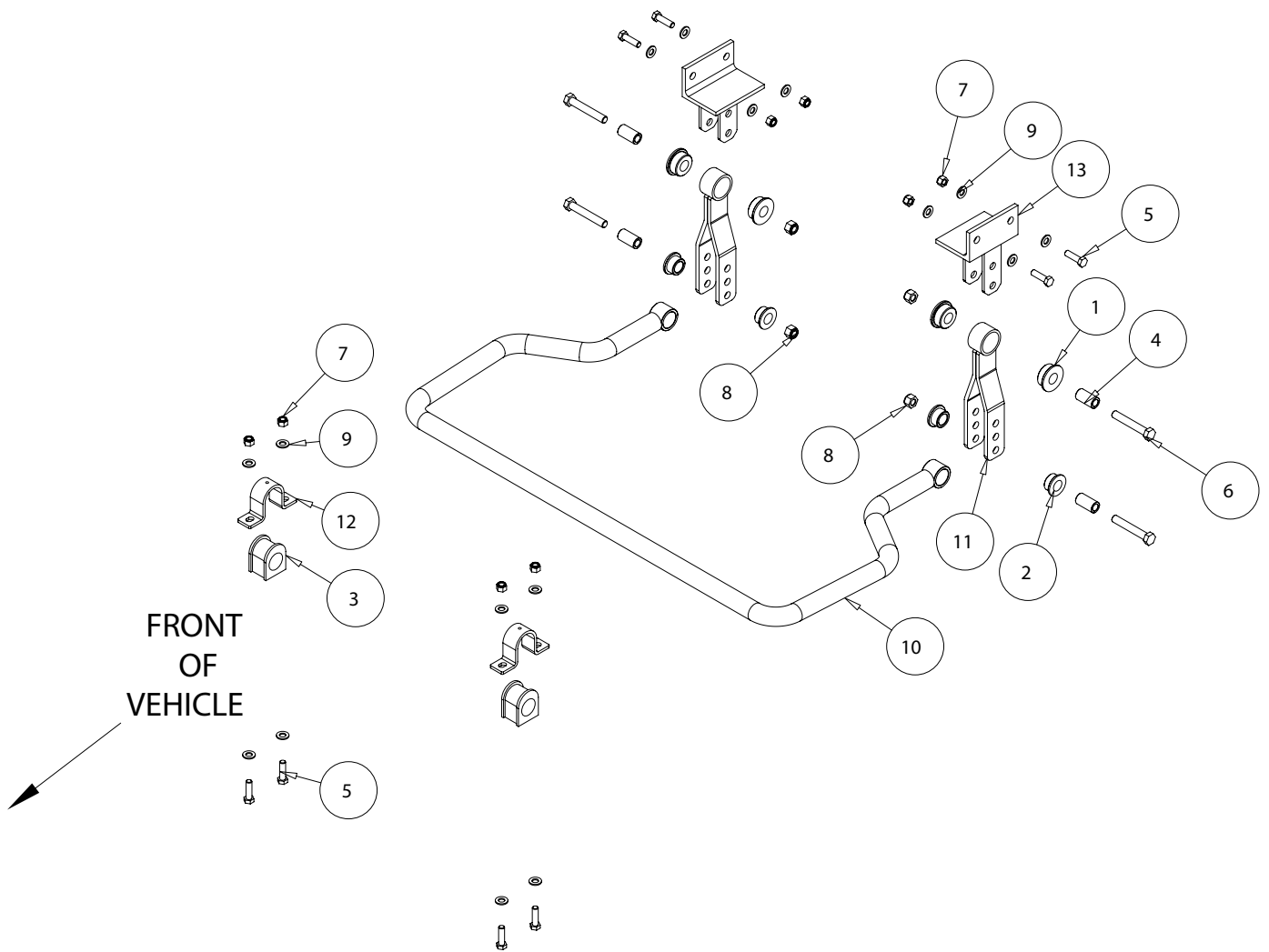
- General hand tools
- 1/8", 1/2" drill bits
- 1/2" drill
- Torque wrench

### **⚠ WARNING**

**Failure to follow these instructions can result in property damage, personal injury or even death.**

- If raising the vehicle to install the anti-sway bar, always support the vehicle with jack stands at both frame rails or at the rear axle before working underneath. Ensure that the jack stands are securely positioned, and are rated at or above the weight of the vehicle.
- The installer must read the instructions and use all bolts and parts supplied. Use only the parts supplied by ROADMASTER to install this kit.
- Minor modifications are sometimes necessary due to slight vehicle variations, even for the same year, make and model.
- Regardless of year, make and model, a wide range of options for specific applications may or may not interfere with the installation. It is the installer's responsibility to make certain that equipment is not damaged once the suspension solution travels through the full range of motion. Failure to ensure adequate clearance could result in non-warranty property damage, personal injury or even death.
- If running changes were made by the manufacturer after this kit was designed, there may be weldments, braces, gussets, or other structural items which interfere with the installation. It is the installer's responsibility to allow for these running changes without sacrificing the structural integrity of the anti-sway bar. Failure to securely fasten the anti-sway bar could result in property damage, personal injury or even death.
- ROADMASTER will not be responsible for any damage or injury resulting from any modification or alteration.
- Check ALL the fasteners for tightness before and after road testing the vehicle.
- Do not use this document for custom fabrication, as it may not show all parts or structural components.
- Do not use an air impact wrench when re-installing bolts, as stripped threads may result.
- This anti-sway bar is only warranted for the original installation. Installing a used anti-sway bar on another vehicle is not recommended and will void the warranty.

# PARTS LIST



ITEM.....	QTY.....	DESCRIPTION.....	PART.....
1.....	4.....	BUSHING.....	205202-10
2.....	4.....	BUSHING.....	205209-00
3.....	2.....	BUSHING.....	205222-10
4.....	4.....	BUSHING SLEEVE.....	205503-00
5.....	8.....	1/2" x 1 3/4" BOLT.....	350096-80
6.....	4.....	5/8" x 4" BOLT.....	350158-00
7.....	8.....	1/2" NYLON LOCK NUT.....	350259-00
8.....	4.....	5/8" NYLON LOCK NUT.....	350263-00
9.....	16.....	1/2" SAE WASHER.....	350308-20
10.....	1.....	ANTI-SWAY BAR.....	580040-00
11.....	2.....	END LINK.....	B1003
12.....	2.....	BUSHING CLAMP.....	B141
13.....	2.....	FRAME BRACKET.....	B734
14.....	1.....	AQUALUBE.....	400011-30
15.....	1.....	THREADLOCKER.....	200544-00

# INSTALLATION

The following instructions must be followed in the order listed to ensure a proper installation and to preserve the ROADMASTER warranty.

1. Block the front wheels.

This installation should be done with the weight of the vehicle on the wheels (i.e. on the ground or ramps).

2. Locate the U-bolts holding springs to axle.

Remove nuts from U-bolts. Retain original bracket and add flat plates (**B415, B416 Note: these plates are not included with the 1179-110 kit**) with small holes pointed towards the rear and center of vehicle. Secure with the factory nuts and washers. Torque to factory manufacturer's specifications.

Note: this step is not needed if the truck is already equipped with On-spot chains.

3. Install the saddle brackets and bushings on the anti-sway bar.

Lubricate the inside of the split bushings with provided lubricant (Figure 1). Install bushings on the sway bar near the arms. Slide the saddle bracket over the split bushings.

4. Install the anti-sway bar assembly to the flat plates.

Lift the anti-sway bar assembly into position so that the saddle bracket holes align with the flat plate holes. Bar mounts on top of the tab on the flat plate. Use the provided bolts (350096-80), washers (350308-20), and nuts (350259-00) to attach it. Tighten the fasteners to 70 ft./lbs. (Figure 2).

5. Locate the shackles and fasteners.

Attach shackles (B279) to the anti-sway bar end with the provided bolts (350158-00) and nuts (350263-00). Do not tighten yet.

6. Install the frame brackets to the shackles.

Install the frame bracket to the shackle in the same manner as above. Do not tighten (Figure 3).

7. Mark the bracket location with respect to the frame rail.

IMPORTANT: Inflate suspension to the normal ride height. Hold the bracket up to the frame rail. Location is correct when shackle is approximately 90 degrees to the frame rail. Mark bracket and frame for drilling (two holes per side). Install brackets using the supplied 1/2" bolts. Tighten the fasteners to 70 ft./lbs (Figure.3).

8. Tighten the shackle bolts.

Now, tighten both upper and lower bolts to 40-45 ft./lbs. Recheck all fasteners for proper tightness.

9. Test drive and re-inspect the installation.

Listen for any unusual noises.

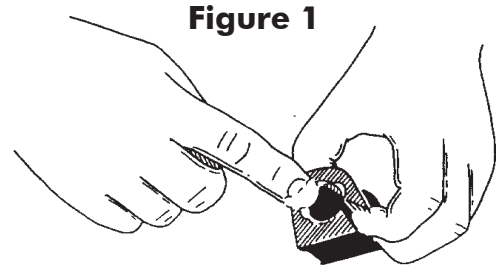


Figure 1

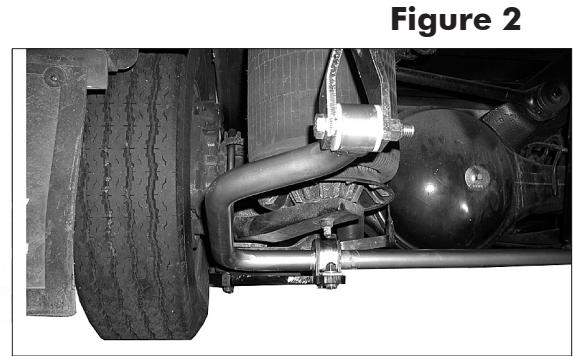


Figure 2



Figure 3

## BOLT TORQUE REQUIREMENTS

STANDARD BOLTS			U-BOLTS	
Thread	Grade	Torque	Thread	Torque
3/8	5	30 lb-ft	3/8-24	35 lb-ft
7/16	5	50 lb-ft	1/2-20	70 lb-ft
1/2	5	75 lb-ft	5/8-18	140 lb-ft
5/8	5	140 lb-ft	3/4-16	250 lb-ft
			7/8-14	400 lb-ft

Note: Endlink bolts use grommets and should NOT be torqued. Tighten these bolts by hand until the grommet starts to deform. Also, these torque values are intended as general guidelines. Roadmaster does not warrant this information to be accurate for all applications and disclaims all liability for any claims or damages which may result from its use.

## **WARNING**

After road testing, re-check all fasteners for proper tightness — if a fastener has worked loose or fallen off, re-tighten or replace it. Without all kit components properly tightened or in place, the anti-sway bar will not stabilize the vehicle at full capacity, which may cause reduced cornering ability or other reductions in vehicle handling or performance.

Failure to follow these instructions may result in property damage, personal injury or even death.

## **WARNING**

### **The anti-sway bar is not a load-bearing component**

Do not tow or hoist the vehicle using the anti-sway bar or its mounting brackets as attachment points. The anti-sway bar is not designed to carry the weight of the vehicle and may collapse, which will damage the anti-sway bar components, the suspension, or other components. The vehicle will detach or fall, which may cause severe personal injury.

Failure to follow these instructions may result in property damage, personal injury or even death.