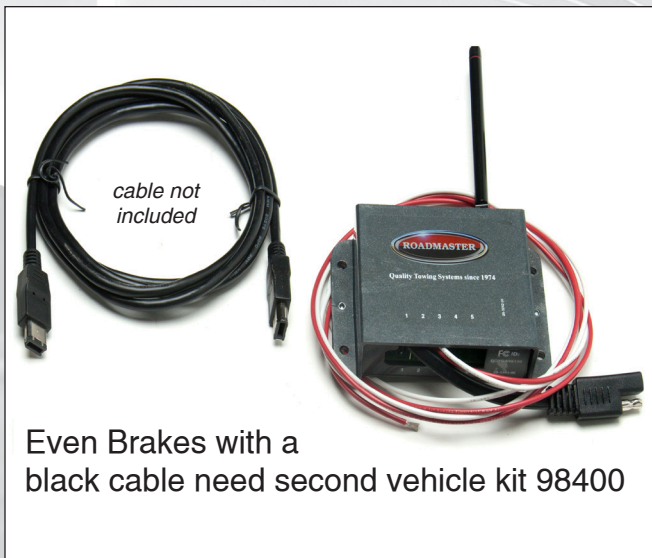


EVEN BRAKE[®]

Second Vehicle Kit Installation Instructions

Part number 98400



CAUTION

Check the Even Brake serial number before continuing.

This kit is compatible ONLY with Even Brake systems with serial numbers of 27,496 and below. Check the serial number on the bottom of the Even Brake unit before proceeding.



Time Tested • Time Proven

Statement of FCC compliance

This device complies with part 15 of the FCC Rules. Operation is subject to the following two conditions: (1) this device may not cause harmful interference, and (2) this device must accept any interference received, including interference that may cause undesired operation.



WARNING

Read all instructions before installing or operating Even Brake. Failure to understand how to install or operate Even Brake could result in property damage, personal injury or even death.



damage, brake damage, or any other damage to vehicles with 'active' braking systems caused by: 1) installation of any ROADMASTER supplemental braking system other than InvisiBrake or BrakeMaster; or 2) failure to install a Brake Pressure Reducer with the BrakeMaster.

CAUTION

Not for use on older vehicles without power brakes. Even Brake is designed to work with vehicles that have a power brake system (even though the power brakes are not activated while towing). Using Even Brake on vehicles that do not have power brakes will result in over-braking and severe non-warranty brake damage.

CAUTION

Do not install Even Brake in a vehicle with an 'active' braking system.

'Active' (or, 'continuous power assist') braking systems are a safety feature on some new vehicles. This feature allows the brakes to always have power, even with the ignition off. The only supplemental braking systems that ROADMASTER manufactures for these vehicles are InvisiBrake and BrakeMaster. A Brake Pressure Reducer (part number 900002) must also be used with BrakeMaster.

If any ROADMASTER supplemental braking system other than these two is installed, the vehicle will brake with excessive force, which will damage the tires. Other non-warranty damage may also occur.

It is the owner's responsibility (or if professionally installed, the installer's responsibility) to determine if the vehicle being equipped with supplemental brakes has an active braking system — refer to the vehicle owner's manual or the dealership. ROADMASTER expressly disallows any and all claims relating to tire



WARNING

The Even Brake 12-volt power cord is always "last in, first out." Never plug in the power cord until Even Brake is completely installed, according to these instructions.

Once it receives power, any movement of the box could cause Even Brake to activate unexpectedly.

Similarly, never disconnect Even Brake without first unplugging the 12-volt power cord.

Failure to install and operate Even Brake as instructed may cause property damage, personal injury or even death.

IMPORTANT NOTICE!

Safety Definitions

These instructions contain information that is very important to know and understand. This information is provided for **safety** and to **prevent equipment problems**. To help recognize this information, observe the following symbols.



WARNING

WARNING indicates a potentially hazardous situation which, if not avoided, could result in property damage, serious personal injury or even death.



CAUTION

CAUTION indicates a potentially hazardous situation which, if not avoided, may result in property damage, or minor or moderate personal injury.

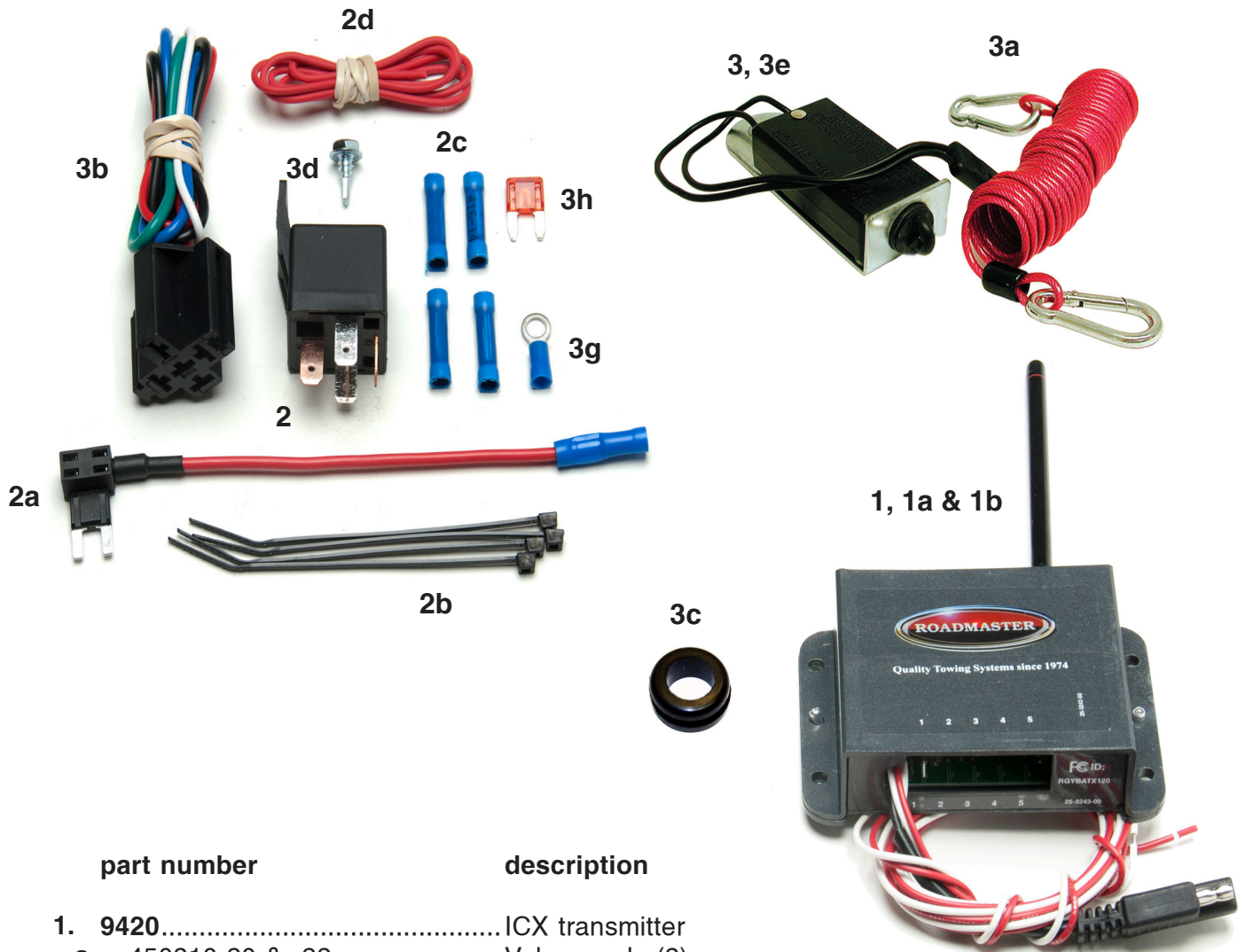
CAUTION

CAUTION used without the safety alert symbol indicates a potentially hazardous situation which, if not avoided, may result in property damage.

NOTE

Refers to important information and is placed in italic type. It is recommended that you take special notice of these items.

Components



part number	description
1. 9420.....	ICX transmitter
a. 450310-20 & -22.....	Velcro pads (2)
b. 350006-20.....	Phillips screws (4)
2. 88410.....	Brake-Lite Relay
a. 450782-1.....	fuse tap (1)
b. 300140-04.....	zip ties (4)
c. 300085-00.....	blue butt connector (4)
d. 300080-02.....	16 ga. red wire
3. 650898.....	break away switch
a. 8602.....	break away cable
b. 650900.....	break away wiring harness
c. 300117-00.....	rubber grommet
d. 350400-20.....	1" hex bolt
e. 350251-20.....	1/4" nut
f. 450782-2.....	fuse tap (1)
g. 300036-00.....	ring terminal, blue
h. 300115-22.....	insulated female terminal, red

All illustrations and specifications contained herein are based on the latest information available at the time of publication. ROADMASTER, Inc. reserves the right to make changes, at any time, without notice, in material, specifications and models, or to discontinue models.

Before you begin the installation...

1. Check the Even Brake serial number. This kit is compatible ONLY with Even Brake systems with serial numbers of 27,496 and below. Check the Even Brake serial number (on the bottom of the Even Brake) before proceeding.

2. Always check the ROADMASTER web site – roadmasterinc.com – for vehicle-specific information. Select ‘Supplemental Braking Systems’ under ‘Vehicle Specific Info’ and enter the vehicle’s make, model and year.

3. If the battery must be disconnected for towing, a 12-volt outlet kit (part number 9332) and a stop light switch must be installed. Stop light switch kits are listed by vehicle at roadmasterinc.com; to see if one is available for your vehicle, select ‘Supplemental Braking Systems’ under ‘Vehicle Specific Info.’ Enter the vehicle’s make, model and year and scroll down the page.

Note: if a stop light switch kit is listed on the web site for any particular vehicle, it is required.

Note: an Automatic Battery Disconnect (part number 766) is available for vehicles which must be towed with the battery disconnected.

If you choose to install an Automatic Battery Disconnect, a 12-volt outlet kit and a stop light switch are still required; the Brake-Lite Relay is not required.

4. If fuse(s) must be removed from the vehicle before it can be towed – verify that removing the fuse(s) will not disrupt power to Even Brake or the ICX transmitter, or otherwise affect the installation or operation.

Note: ‘FuseMaster’ automatic fuse disconnects are available through ROADMASTER. Visit roadmasterinc.com and click the ‘Vehicle Specific Info’ page for a fit list.

5. Check the towed vehicle’s 12-volt outlet for correct power – Even Brake is powered through the 12-volt outlet, with the ignition turned to the “tow” position. However, some vehicles only have power at the 12-volt outlet when the engine is running. Before you begin the installation, verify that you have power in the towed vehicle’s 12-volt outlet with the ignition turned to the “tow” position.

If there is no power, you can install ROADMASTER’s optional 12-volt outlet kit (part number 9332). When installed, this kit will provide power to the 12-volt outlet even when the engine is off.

6. Check the 12-volt outlet socket to make certain that: a) the socket has been wired correctly; and b) the socket is not corroded.

a. Make certain that the socket has been wired correctly – the contact point at the bottom of the socket should be positive, and the outer shell around the top of the socket should be negative.

CAUTION

If the socket’s positive and negative connections have been reversed, the fuse in the Even Brake power cord will blow when the cord is plugged into the 12-volt outlet.

b. Make certain that the socket is not corroded or otherwise damaged – a corroded socket may not pro-

vide constant power to Even Brake, which may cause intermittent operation or disrupt the Even Brake diagnostic program, causing false alerts.

If the socket is corroded or damaged, you can install ROADMASTER’s optional 12-volt outlet kit (part number 9332). When installed, this kit will provide constant power to Even Brake.

CAUTION

If the towed vehicle has a single 12-volt outlet which has been used to heat a cigarette lighter plug, install the optional 12-volt outlet kit for the Even Brake power supply.

Using a cigarette lighter plug in a 12-volt socket will corrode the contact points. The socket will not supply sufficient voltage to be used as the Even Brake power source — Even Brake may not operate, or may only operate intermittently.

7. The circuit at the towed vehicle’s 12-volt outlet must be rated at NO LESS THAN 15 AMPS to power Even Brake. Check the fuse at the outlet – if the fuse is rated at 15 amps or higher, the circuit is adequate to power Even Brake. If the fuse is rated at less than 15 amps, install the optional 12-volt outlet kit (part number 9332). When installed, this kit will provide adequate power to Even Brake.

CAUTION

If the circuit at the 12-volt outlet is rated at less than 15 amperes, install the optional 12-volt outlet kit. Depending on the available current during towing, Even Brake may not function, or may function incorrectly, without at least 15 amps.

WARNING

If the circuit is rated at less than 15 amps, do not simply replace the outlet’s fuse with a higher-ampere fuse. This will cause the wiring to overheat, which can cause wiring damage, an electrical fire or other consequential, non-warranty damage.

8. Check the towed vehicle’s brake lights – Even Brake must function with the ignition in the “tow” position; however, some vehicles’ brake lights only operate with the ignition in the “on” position. Check to see if this is the case: turn the ignition to the “tow” position, apply the brakes and check to see if the brake lights illuminate. If the brake lights do not illuminate, a two-prong stop light switch and 10-amp fuse must be installed.

Note: check the owner’s manual to see if the vehicle is equipped with an “automatic shut down” feature. If this is the case, ensure that the vehicle is not in automatic shut down mode before performing this test.

Stop light switch kits are listed by vehicle at roadmasterinc.com; to see if one is available for your vehicle, select ‘Supplemental Braking Systems’ under ‘Vehicle

continued on next page

continued from previous page

Specific Info.' Enter the vehicle's make, model and year and scroll down the page.

9. Route all wiring to avoid the possibility of a short circuit or other damage to the vehicle.

! WARNING

Route all wiring to avoid moving parts, sharp edges, the fuel lines or hot components such as the engine or exhaust system.

Wiring exposed by moving parts, sharp edges or hot components may cause a short circuit, which can result in damage to the vehicle's electrical system as well as other, consequential damage.

Wiring which is attached in close proximity to the fuel lines may ignite the fuel.

10. If you are a professional installer, return these instructions to the owner of the vehicle after the installation, for the owner's future reference.

Installation instructions

Step A

Install the break away system

1. Mount the break away switch (Figure 1) at the front of the vehicle, on the driver's side. Choose an area you can easily reach, with a surface of sufficient strength to hold the switch firmly in place, so that the break away pin (Figure 1) will pull freely from the switch. Mount the switch in a horizontal position, with the break away pin facing toward the motorhome.

Ensure that the break away pin can be pulled freely away from the towed vehicle, without any obstructions.

! WARNING

Do not attach the break away switch to the tow bar. In the unlikely event that the tow bar should separate, the break away switch will separate with it, preventing the break away system from activating.

The towed vehicle's brakes will not be applied, which may cause property damage, personal injury or even death.

2. The Inter Connect transmitter ("ICX transmitter") will be attached in a later step; however, since the break away wiring harness will be connected to it, choose a location for the ICX transmitter now. Look for a mounting point on the driver's side of the towed vehicle, on the lower portion of the dashboard, where the end of the transmitter with the antenna and socket will be visible and accessible.

Choose an area away from pre-existing components or electronics, and where the transmitter will not present an obstruction or hazard to the driver of the vehicle or interfere with the operation of the vehicle. The mounting surface must be of sufficient strength to hold the transmitter firmly in place, so that an electrical connector can be plugged into and out of the transmitter.

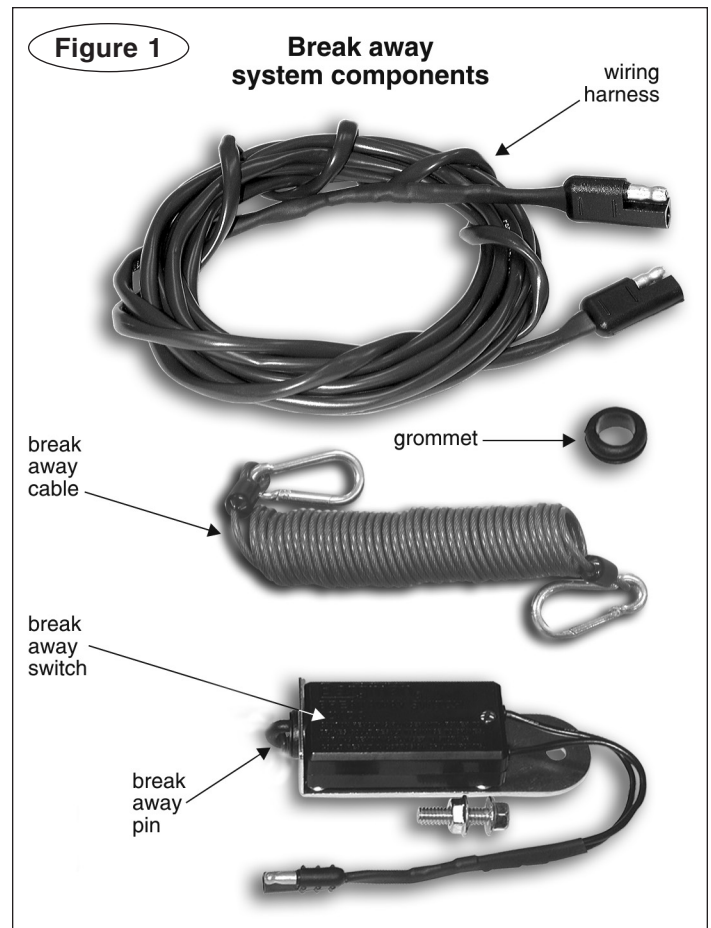
3. Once you have found a location for the ICX transmitter, look for a pre-existing hole in the firewall (or, if there is sufficient space, a pre-existing grommet with other wiring) close to where you will mount the ICX transmitter, to

route the break away wiring harness through the firewall.

If there is no pre-existing hole or grommet with sufficient space, drill a 1/2" hole through the firewall.

Drill from the engine compartment or from the interior of the vehicle, whichever is more convenient. Before drilling, make certain you will not damage any components on the other side of the firewall.

continued on next page



continued from preceding page

4. Route the wiring harness (Figure 1) from the break away switch to the firewall (or, from the firewall to the break away switch, whichever is more convenient), avoiding moving parts, sharp edges, the fuel lines or hot components such as the engine or exhaust system. Where appropriate, use wire ties to secure the break away wiring harness.

Connect the wiring harness to the break away switch.

5. Cut through the included grommet (Figure 1) on one side, slide it over the wiring harness and fit the grommet into the hole in the firewall. Feed the remaining length of the wiring harness through the grommet. Then, seal the grommet with a silicone sealant.

You will connect the wiring harness to the ICX transmitter in a later step.

Step B

Modifications to the towed vehicle's lighting system

A supplemental braking system will affect the operation of the vehicle's tow lighting system. Use the information below to determine if optional components must be installed in a vehicle which has been wired for towing – or, if no lighting system has been installed, which systems are appropriate.

1. First, identify the type of brake and turn signals in the vehicle. There are two types – combined or separate.

In a **combined** system (Figure 2), the brake light does the flashing for the turn signal; in a **separate** system (Figure 2), there are amber or red turn signal lights which are separate from the brake lights.

2. Next, test to see if the towed vehicle's brake lights will illuminate with the engine off – with the ignition at the "tow" position, press the brake pedal and check the brake lights.

3. Based on whether or not the brake lights illuminate, and the type of brake and turn signals, there are three possibilities:

- the brake lights illuminate and the towed vehicle has combined lighting;
- the brake lights illuminate and the towed vehicle has separate lighting; or
- the brake lights do not illuminate.

There are a number of lighting methods available for each of these three possibilities; they are described below.

(If you choose to install a Universal Wiring Kit, a Bulb & Socket Wiring Kit or magnetic tow lights, complete in-

stallation instructions and wiring diagrams are included with the kits; this information is also available online at roadmasterinc.com. Installation instructions for the Brake-Lite Relay are included in the literature packet.)

If the brake lights illuminate and the towed vehicle has combined lighting...

...one of the three alternatives below is required:

- A Universal Wiring Kit (part number 154) **with** a Brake-Lite Relay – a system of diodes is installed to rewire the vehicle's turn signals, taillights and brake lights for towing. See Step C – "If required, install the Brake-Lite Relay."
- Install an optional Bulb and Socket set, part numbers 152-LED or 155.
- Install an optional magnetic tow light system (part number 2100 or 2120).

If the brake lights illuminate and the towed vehicle has separate lighting...

...one of the four alternatives below is required:

- A Universal Wiring Kit (part number 154) **with** a Brake-Lite Relay – a system of diodes is installed to rewire the vehicle's turn signals, taillights and brake lights for towing. See Step C – "If required, install the Brake-Lite Relay."
- Install six diodes, and jump the diodes. See page 7.
- Install an optional Bulb and Socket set, part numbers 152-LED or 155.
- Install an optional magnetic tow light system (part number 2100 or 2120).

If the brake lights do not illuminate...

...an optional stop light switch **must** be installed. Stop light switch kits for many vehicles are available through ROADMASTER; visit roadmasterinc.com for the most current list.

Any one of the following tow lighting systems must also be installed with the stop light switch:

- A Universal Wiring Kit (part number 154) – a system of diodes is installed to rewire the vehicle's turn signals, taillights and brake lights for towing.
- An optional Bulb and Socket set, part numbers 152-LED or 155.
- An optional magnetic tow light system (part number 2100 or 2120)

Step C

If required, install the Brake-Lite Relay

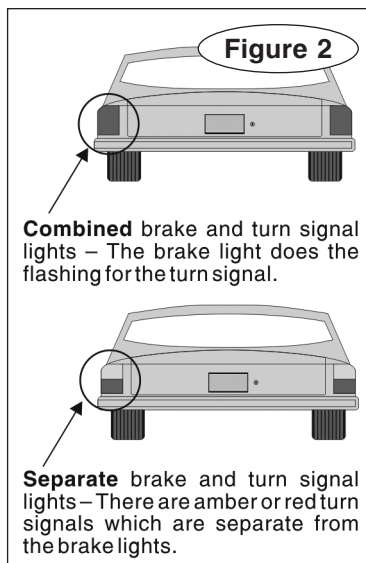
Note: do not install the Brake-Lite Relay unless it is required. Refer to Step B – "Modifications to the towed vehicle's lighting system."

If the Brake-Lite Relay is required, install it now. The instructions are included in the literature packet. After the Brake-Lite Relay is installed, proceed to Step D, "Wire and attach the ICX transmitter."

If the Brake-Lite Relay is not required...

...proceed to Step D, "Wire and attach the ICX transmitter."

continued on next page



Step D

Wire and attach the ICX transmitter

1. Before attaching the ICX transmitter, first connect the break away system harness and the towed vehicle's brake switch wire to the ICX transmitter. Then, connect the ICX transmitter to a 12-volt power source, as well as a suitable ground...

a. Connect the break away system – plug the end of the break away wiring harness, which you routed through the vehicle's firewall in Step A, into the flat, two-prong molded plug in the ICX transmitter (Figure 3).

b. Connect the brake switch wire...

- If the Brake-Lite Relay **was** installed – push the female spade connector at the end of the green wire into the terminal marked "1" on the ICX transmitter (Figure 3).

- If the Brake-Lite Relay **was not** installed – connect the "cold" side of the brake light switch to the terminal marked "1" on the ICX terminal (Figure 3).

c. Connect to a power source – identify a fuse that is constantly powered when the ignition is in the "tow" position. Pull the fuse.

WARNING

Do not remove any fuse connected to the air bag circuit. Air bag deployment can result. Consult the vehicle owner's manual to determine fuse assignments for other safety systems.

Note: make certain this fuse is not part of a "retained accessory power" circuit — with this feature, the vehicle's electronics continue to function normally for about ten minutes after the ignition is turned off. Then the electronics will no longer function, which shuts off power.

Insert the fuse you just pulled into the provided ATM fuse tap, into the slot closest to the fuse blades (Figure 4), then insert the fuse tap into the empty slot in the fuse panel.

Using the attached blue butt connector, connect the red wire from the ICX transmitter (Figure 3) to the wire from the fuse tap.

Note: unless the red (power) wire is connected to a fuse that provides 12 VDC+ at all times, the motorhome monitor will display error messages relating to low battery power, such as "Low Battery," when towing.

d. Connect to a suitable ground – connect the white wire from the ICX transmitter to any good chassis ground.

2. Insert the provided 10-amp fuse into the ATM fuse tap (Figure 4).

3. Once you have connected the break away system harness and the vehicle's brake switch wire to the ICX transmitter, and connected the ICX transmitter to a 12-volt power source and ground, attach the ICX transmitter to the driver's side dashboard, at the mounting point you chose in Step A.

Attach the transmitter so that the end of the transmitter with the antenna and socket will be facing the rear of the vehicle. Use either the supplied screws (one at each corner) or the Velcro strips to mount the transmitter.

4. Ensure that the wiring for the break away system, the brake switch wire, and the power and ground connections will not present an obstacle or hazard to the driver of

the vehicle or interfere with the operation of the vehicle. Use one or more of the included wire ties, if necessary, to secure the wiring out of the way.

Step E

Program the motorhome monitor

Once the second vehicle kit has been installed, program the system to recognize the second ICX transmitter.

A second 12-volt outlet (in addition to the towed vehicle's) will be necessary to complete this step.

1. Before programming, first install and connect Even Brake in the towed vehicle – follow the "Operation" instructions in the owner's manual. Even Brake must be completely installed and connected, with both the ICX transmitter cord and the power cord plugged in.

WARNING

Read all instructions in the Even Brake owner's manual before installing or operating Even Brake. Failure to understand how to install or operate Even Brake could result in property damage, personal injury or even death.

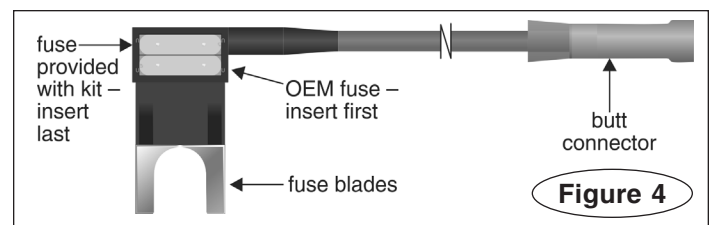
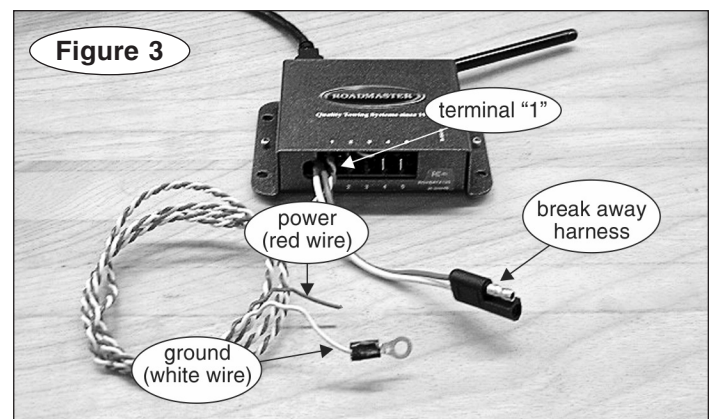
Note: before transferring Even Brake to a second (or third, or fourth) vehicle, it may be necessary to adjust the feet to maintain stability. Refer to Step B — "Adjust the feet and the seat pad" — in the "Operation" section of the Even Brake owner's manual.

2. Next, at the towed vehicle, plug the motorhome monitor power cord into the second 12-volt outlet. (This outlet must be receiving power for the monitor to operate.) The LCD text display will read "Even Brake."

3. Now, press the "Dim" button on the motorhome monitor (Figure 5) for approximately six seconds, until the LCD text display reads "Receiver is in Learn Mode."

4. Release the "Dim" button. The LCD text display will

continued on next page



continued from preceding page

read “Learning ICX #1 – Advance? OK ↓.”

If you are programming the monitor for a second towed vehicle, press the button with the left-hand arrow (<) on the monitor to scroll to the next message – “Learning ICX #2 – Advance? OK ↓.” If you are programming the monitor for a third or fourth towed vehicle, continue to press the button with the left-hand arrow (<) on the motorhome monitor to scroll to the appropriate message in this series – “Learning ICX #3...” or “Learning ICX #4...”

5. Press the “Test” button (Figure 6) on the Even Brake touch pad control panel. Even Brake will begin a self-diagnostic test.

(As part of the test, Even Brake will cycle the brake pedal clamp up and down three times. When the brake pedal clamp is depressed, the LCD display on the motorhome monitor will read “Braking.”)

6. After Even Brake has completed the self-diagnostic test, the test light on the touch pad control panel (Figure 6) will illuminate green to indicate the system is ready, or red to indicate the system is not ready.

- If the test light is green and the LCD display reads “Test Is Good – System Ready,” the motorhome monitor is programmed to the ICX transmitter. When the vehicle is towed, the monitor will display braking activity and system status information from Even Brake.

The monitor can be programmed in this manner for up to four vehicles. Once programmed, the monitor will automatically recognize the ICX transmitter in each vehicle without further adjustment.

- If the test light is red, check the motorhome monitor LCD text display for detailed information. You can also refer to the “Communications” sections (“Overview” and “Reference Chart”) in the Even Brake owner’s manual.

7. Before towing, read the owner’s manual, cover to cover. Understand how to install and operate Even Brake, and carefully follow the instructions and safety precautions.

WARNING

Read all instructions before installing or operating your Even Brake. Failure to understand how to install or operate Even Brake could result in property damage, personal injury or even death.

The installation is complete. The remaining page describes an alternative wiring method.

As a final step, test Even Brake to ensure that it has been installed correctly.

After you are certain Even Brake is functioning as it should, show the owner how to properly operate Even Brake. Demonstrate how to connect and disconnect Even Brake, and how to adjust the settings, until the owner is comfortable with its operation.

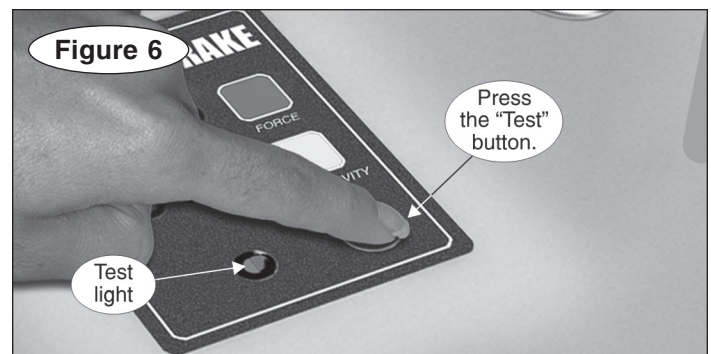
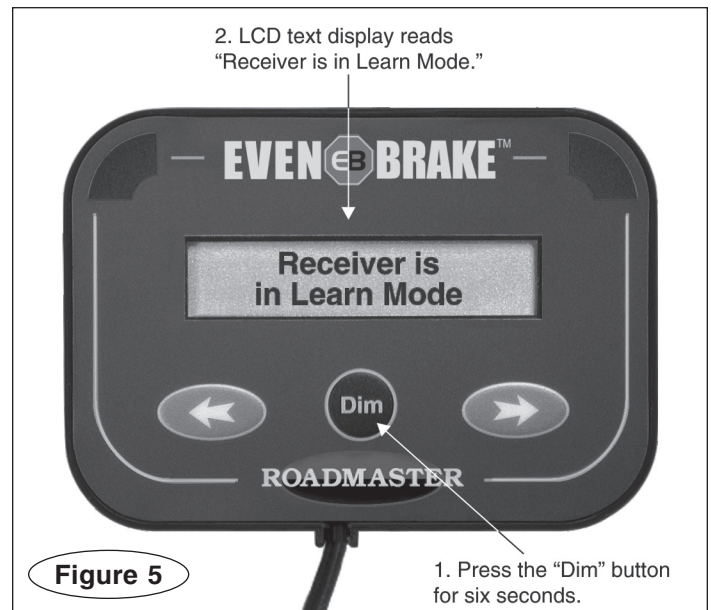
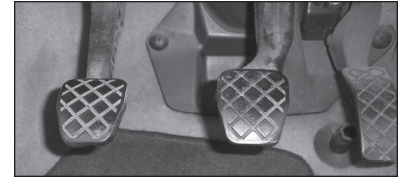
Step F

Test all functions

1. Follow the Even Brake owner’s manual to connect and disconnect Even Brake, and to adjust its settings.

Note: the Even Brake pedal clamp will not fit the brake pedals of a small number of late-model Volkswagen vehicles, such as the 2007 Volkswagen Golf. A photo of the 2007 Golf brake pedal is shown to the right.

Use the optional 9329-VW replacement pedal clamp for these vehicles.



Install six diodes

Note: this wiring method can only be used if the brake lights illuminate with the engine off and the towed vehicle has separate lighting. See page 4.

Note: if the motorhome has combined brake and turn signals, use Figure 7 to wire the towed vehicle. If the motorhome has separate brake and turn signals, visit roadmasterinc.com. Use the 'Separate towed vehicle to separate' motorhome wiring diagram under 'Support.'

Note: if a 3-to-2 converter has been installed in a motorhome with separate brake and turn signals, wire the towed vehicle according to Figure 7.

To test for a 3-to-2 converter, use a test light to find the turn signal and brake light circuits on the motorhome electrical socket. If the same circuit energizes both the turn signals and the brake lights, a 3-to-2 converter has been installed. If the turn signal and brake lights have separate circuits, a 3-to-2 converter has not been installed.

1. Cut the factory turn signal, taillight and brake light wires, as close to the lights as possible.

2. Install the six diodes in line, as shown in Figure 7. Install the diodes as close to the lights as possible.

CAUTION

Attach the diodes as close to the vehicle's lights as possible, to avoid interaction with other circuits which may be tied into the center brake light, the running lights, the turn signals or the brake light wires.

Attaching the diodes farther away may cause the towed vehicle's lights to work improperly and may also cause damage to other electrical components in the vehicle.

3. On each side, jump the brake and turn signal diodes, as shown in Figure 7.

CAUTION

Unless the brake and turn signal diodes are jumped, the towed vehicle's brake light circuits will override the motorhome's turn signals — the towed vehicle's turn signals will not operate in conjunction with the motorhome's turn signals, as required by law.

4. Test the installation...

A. If the motorhome has a combined lighting system (Figure 2)...

1. The towed vehicle's turn signals and brake lights will both flash (each side) when the motorhome's turn signal is on; and

2. When the motorhome's turn signal and brake signal are both on (each side), the towed vehicle's brake lights will stay illuminated, while the turn signal flashes.

B. If the motorhome has a separate lighting system (Figure 2), the towed vehicle's turn signals and brake lights will illuminate identically to the motorhome's.

