



# Installation Instructions

Thank you for purchasing this anti-sway bar kit. Please read through these instructions before installation.

## Rear Anti-Sway Bar Kit for the Dodge 2500/ 3500 ('96-'02)

part #1129-122



### INTRODUCTION

Thank you for purchasing the ROADMASTER rear anti-sway bar kit. This kit is designed to improve the handling characteristics of your Dodge Ram 2500/3500 4WD pick-up by reducing the body roll and balancing the weight transfer during cornering. The anti-sway bar kit is engineered for long life and trouble-free performance.

All the hardware needed for installation is included in this kit. Refer to the PARTS LIST in these instructions to identify the parts.

### SUGGESTED TOOLS

The following are suggesting to complete the installation procedures.

- General hand tools
- Torque wrench
- Drill bits: 1/8", 3/8"
- Allen wrench
- Electric drill

## WARNING

- If raising the vehicle to install the anti-sway bar, always support the vehicle with jack stands at both frame rails or at the rear axle before working underneath. Ensure that the jack stands are securely positioned, and are rated at or above the weight of the vehicle.
- The installer must read the instructions and use all bolts and parts supplied. Use only the parts supplied by ROADMASTER to install this kit.
- Minor modifications are sometimes necessary due to slight vehicle variations, even for the same year, make and model.
- If running changes were made by the manufacturer after this kit was designed, there may be weldments, braces, gussets, or other structural items which interfere with the installation. It is the installer's responsibility to allow for these running changes without sacrificing the structural integrity of the anti-sway bar. Failure to securely fasten the anti-sway bar could result in property damage,

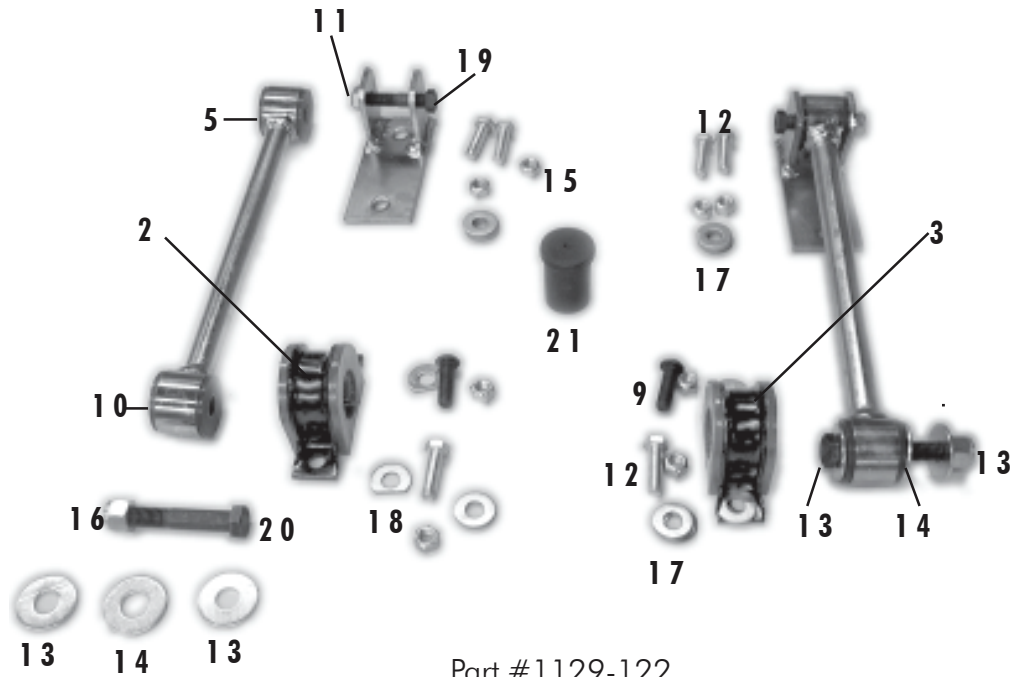
personal injury or even death.

- ROADMASTER will not be responsible for any damage or injury resulting from any modification or alteration.
- Check ALL the fasteners for tightness before and after road testing the vehicle.
- Do not use this document for custom fabrication, as it may not show all parts or structural components.
- Do not use an air impact wrench when re-installing bolts, as stripped threads may result.
- This anti-sway bar is only warranted for the original installation. Installing a used anti-sway bar on another vehicle is not recommended and will void the warranty.

## WARNING

Failure to follow these instructions can result in property damage, personal injury or even death.

# PARTS LIST



Part # 1129-122

Part #	Description	Qty	Part #	Description	Qty
1. 580019-00	Rear sway bar, 1-1/4"	1	12. 350056-00	Bolt, 3/8" x 1-1/4" NC	6
2. B142	Bracket, U	2	13. 350308-00	Washer, 1/2" cut	4
3. 205215-10	Bushing, poly	2	14. 350347-00	Washer, 9/16" cut	2
4. 205223-00	Bushing, poly hat	8	15. 350272-00	Locknut, 3/8" NC	8
5. 205508-00	Sleeve, 1-1/4" long	2	16. 350259-00	Locknut, 1/2" NC	2
6. B315	End link, 11"	2	17. 350304-80	Washer, 3/8" cut	12
8. B316	Bracket, frame mount	2	18. 350304-30	Washer, D	4
9. 350056-80	Bolt, bitn hd 3/8" x 1-1/4" NC	2	19. 350079-00	Bolt, 7/16" x 2-1/4"	2
10. 205501-00	Sleeve, 1-3/8" long	2	20. 350101-80	Bolt, 1/2" x 3"	2
11. 350256-02	Locknut, 7/16" NC	2	21. 400011-30	AQUALUBE Grease (not shown)	1

# INSTALLATION

The following instructions must be followed in the order listed to ensure a proper installation and to preserve the ROADMASTER warranty.

## 1. Support the rear axle.

Place jack stands under the rear axle housing to correctly locate the mounting points for the links. Lower the axle housing onto the jack stands. Push the side of the body to make sure that the vehicle is stable.

## 2. Insert the saddle bracket bolts into the shock brackets.

Note: the rear shock lower mount may need to be removed to permit this. Place washers on the bolts and proceed. Use a button head bolt in the hole closest to the shock. Use a 3/8" bolt in the other hole.

## 3. Grease the inside of the bushings.

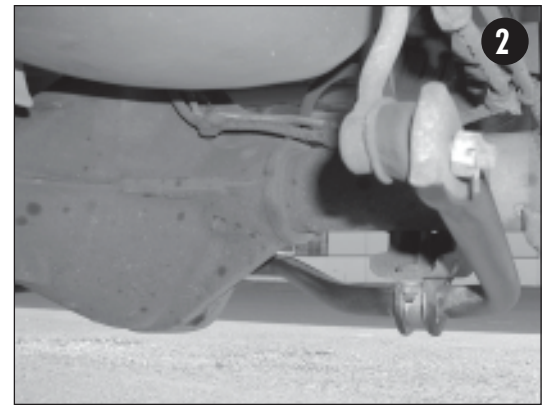
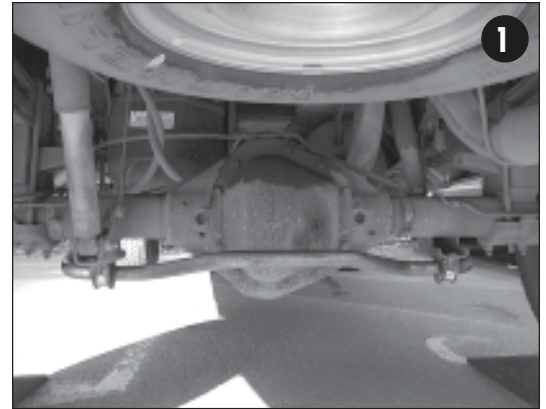
Use the provided Aqualube to grease the inside of the bushings. After greasing, place the bushings over the anti-sway bar.

## 4. Push the saddle brackets over the bushings.

You may need a soft hammer to squeeze the brackets over the bushings.

## 5. Install sway bar to rear axle.

Note: the center bend in the anti-sway bar should go up. Use the D-shaped washers and nuts to secure. The bar is not centered front to rear on the brackets, but is centered with respect to the axle.

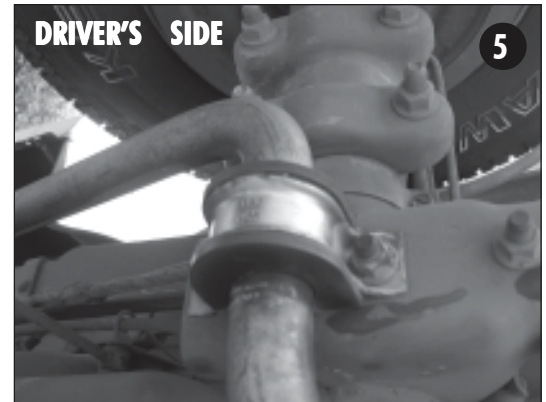
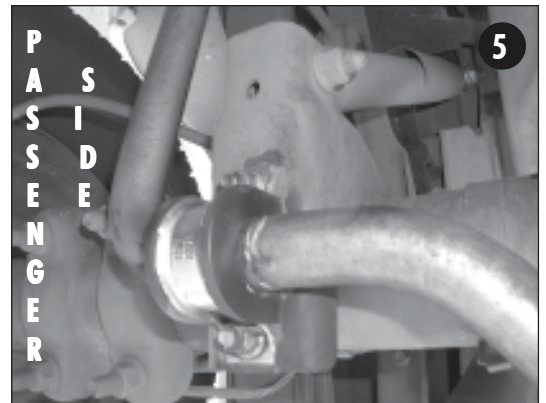


## WARNING

### The anti-sway bar is not a load-bearing component

Do not tow or hoist the vehicle using the anti-sway bar or its mounting brackets as attachment points. The anti-sway bar is not designed to carry the weight of the vehicle and may collapse, which will damage the anti-sway bar components, the suspension, or other components. The vehicle will detach or fall, which may cause severe personal injury.

Failure to follow these instructions may result in property damage, personal injury or even death.



# INSTALLATION

## 6. Assemble the end bushings onto endlink.

Push the poly bushings onto the endlinks. Push one of each size sleeve into the two endlinks. The one with the smaller ID is the top. Refer to the parts page.

## 7. Attach the upper mounting bracket to the endlink.

Use the supplied 7/16" bolts to attach the upper mounting brackets to the endlinks. The flat tab of the bracket goes toward the front of the truck. Finger-tighten.

## 8. Attach each endlink to an anti-sway bar end.

Use the supplied 1/2" bolts to attach each endlink to the inside of both anti-sway bar arms. Refer to the parts page to see where the washers go.  
*Note:* these pictures show the anti-sway bar using the factory endlink.

## 9. Check for mounting holes on the frame rails.

On some models, there are already two holes that you can use to attach the upper mounting brackets. If holes are present, skip to Step 11. If the holes are not present, see Step 10.

## 10. Determine the location of the holes.

Swing each endlink up to determine where to drill the holes. The end links should be roughly perpendicular to the ground.

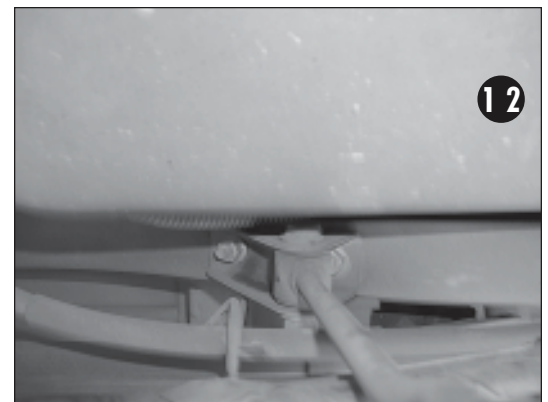
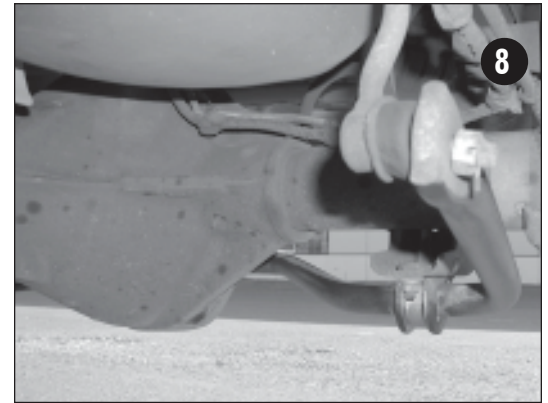
## 11. Mark the frame rails and drill the holes.

Mark the frame rails and punch marks with a center punch. Drill a 1/8" pilot hole and then follow up with a 3/8" drill bit.

## 12. Attach the upper mounts. Use the provided 3/8" bolts.

Tighten all fasteners. Reattach the lower shock mounts and tighten those fasteners.

## 13. Road test and re-check the fittings.



## WARNING

After road testing, re-check all fasteners for proper tightness — if a fastener has worked loose or fallen off, re-tighten or replace it. Without all kit components properly tightened or in place, the anti-sway bar will not stabilize the vehicle at full capacity, which may cause reduced cornering ability or other reductions in vehicle handling or performance.

Failure to follow these instructions may result in property damage, personal injury or even death.