

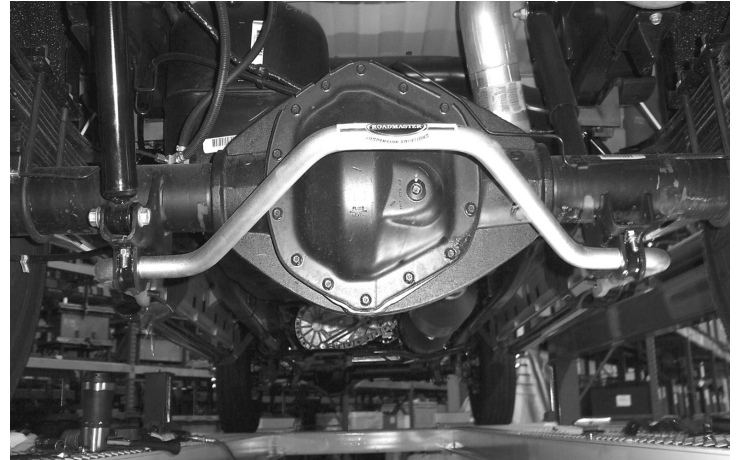


Installation Instructions

Thank you for purchasing this anti-sway bar kit. Please read through these instructions before installation.

Rear Anti-Sway Bar Kit for 2008 Dodge Ram 3500

part #1129-130 1-3/8" diameter
** If a 4" lift kit is installed, you will need the 590057-00 endlink kit.*



INTRODUCTION

Thank you for purchasing this rear anti-sway bar kit. This kit is designed to improve the handling characteristics of your vehicle by reducing the body roll and balancing the weight transfer during cornering. The anti-sway bar kit is engineered for long life and trouble-free performance. All the hardware needed for installation is included in this kit. Refer to the PARTS LIST in these instructions to identify the parts.

SUGGESTED TOOLS

The following tools are suggested to complete the installation procedures:

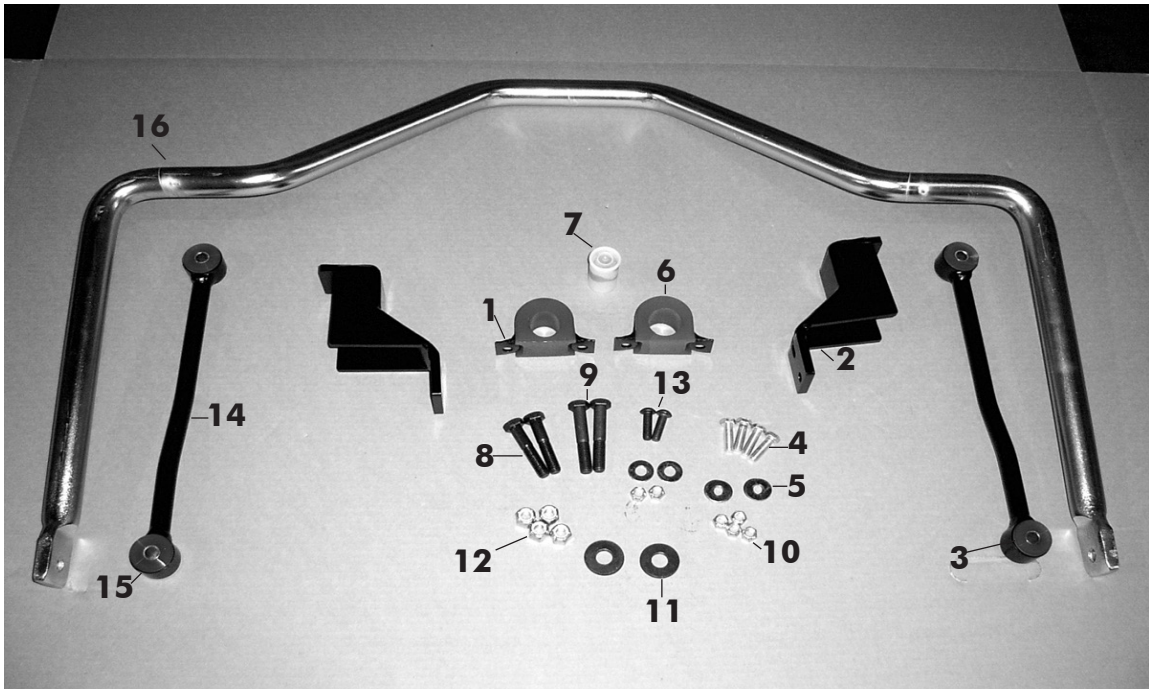
- General Hand Tools
- Torque wrench
- Angle grinder or cut-off wheel
- Soft hammer

WARNING

Failure to follow these instructions can result in property damage, personal injury or even death.

- If raising the vehicle to install the anti-sway bar, always support the vehicle with jack stands at both frame rails or at the rear axle before working underneath. Ensure that the jack stands are securely positioned, and are rated at or above the weight of the vehicle.
- The installer must read the instructions and use all bolts and parts supplied. Use only the parts supplied by ROADMASTER to install this kit.
- Minor modifications are sometimes necessary due to slight vehicle variations, even for the same year, make and model.
- Regardless of year, make and model, a wide range of options for specific applications may or may not interfere with the installation. It is the installer's responsibility to make certain that equipment is not damaged once the suspension solution travels through the full range of motion. Failure to ensure adequate clearance could result in non-warranty property damage, personal injury or even death.
- If running changes were made by the manufacturer after this kit was designed, there may be weldments, braces, gussets, or other structural items which interfere with the installation. It is the installer's responsibility to allow for these running changes without sacrificing the structural integrity of the anti-sway bar. Failure to securely fasten the anti-sway bar could result in property damage, personal injury or even death.
- ROADMASTER will not be responsible for any damage or injury resulting from any modification or alteration.
- Check ALL the fasteners for tightness before and after road testing the vehicle.
- Do not use this document for custom fabrication, as it may not show all parts or structural components.
- Do not use an air impact wrench when re-installing bolts, as stripped threads may result.
- This anti-sway bar is only warranted for the original installation. Installing a used anti-sway bar on another vehicle is not recommended and will void the warranty.

PARTS LIST



Part #1129-130

Part #	Description	Qty
1	B142 Bushing Clamp	2
2	B615 Frame Bracket	2
3	205510-00 Metal Sleeve	4
4	350056-00 3/8" x 1/4" Cap Screw	4
5	350304-80 3/8" Cut Washer	8
6	205214-10 Bushing	2
7	400011-30 Aqualube Grease	1
8	350099-88 1/2" x 2 1/2" NC SOCBHCS	2
9	350101-80 1/2" x 3" NC GD8 PIN	2
10	350272-00 3/8" Locknut	6
11	350347-00 9/16" Flat Washer	4
12	350259-00 1/2" Nylon	4
13	350056-80 3/8" x 1 1/4"	2
14	B410 End Link	2
15	205223-00 Hat Bushing	8
16	580226-00 Sway Bar	1

INSTALLATION

The following instructions must be followed in the order listed to ensure a proper installation and to preserve the ROADMASTER warranty.

WARNING

The anti-sway bar is heavy, and may cause property damage or personal injury if it falls on equipment, engine components or any part of your body. Ensure that the anti-sway bar is supported and that you are out of the way when removing the brackets.

Failure to follow these instructions may cause property damage, personal injury or even death.

1. Support the rear axle.

Place jack stands under the rear axle housing to correctly locate the mounting points for the links. Lower the axle housing onto the jack stands. Push the side of the body to make sure that the vehicle is stable.

2. Insert the saddle bracket bolts into the shock brackets. Note: use the two forward holes.

Note: the rear shock lower mount may need to be removed to permit this. Place washers on the bolts and bolt into the shock mounts through the rear holes on both sides of the axle.

3. Grease the inside of the bushings.

Use the provided Aqualube to grease the inside of the bushings. After greasing, place the bushings over the anti-sway bar.

4. Push the saddle brackets over bushings.

You may need a soft hammer to squeeze the brackets over the bushings.

5. Removing the shock.

Remove the shock and insert 3/8" bolts into the two holes closest to the rear of the vehicle (Figure 1).

6. Remove the bump stop.

Using a 15mm socket, remove the forward bump stop from the overload spring. On both sides, bolt through the slotted hole of the frame bracket with a button head cap screw (350056-80) and a lock nut, and tighten.

7. Assembling the endlinks.

Before installing the frame brackets, assemble the endlinks. Beginning on the driver's side, attach the endlinks with a button head bolt on the top side and a socket head bolt on the bottom.

Note: the endlink should be offset to the outside.

Note: due to the location of the gas tank, the bolt on the driver's side must go through the endlink toward the outside frame rail (Figure 2).

Figure 1

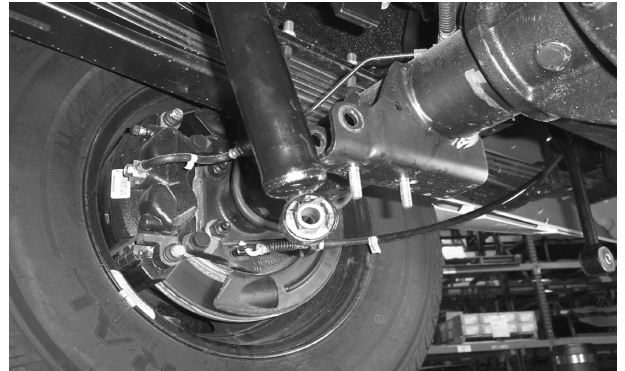
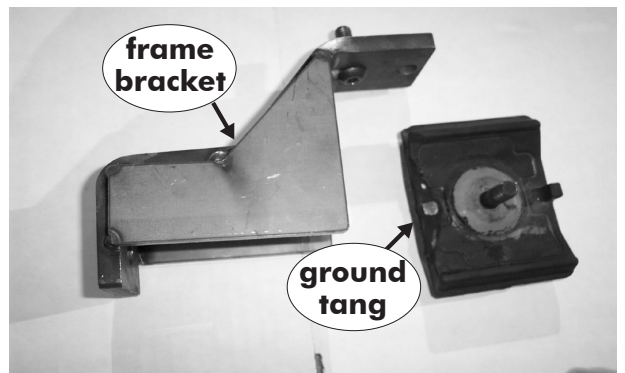


Figure 2



Figure 3



INSTALLATION

The following instructions must be followed in the order listed to ensure a proper installation and to preserve the ROADMASTER warranty.

WARNING

The anti-sway bar is heavy, and may cause property damage or personal injury if it falls on equipment, engine components or any part of your body. Ensure that the anti-sway bar is supported and that you are out of the way when removing the brackets.

Failure to follow these instructions may cause property damage, personal injury or even death.

8. Reinstalling the bump stop.

Using an angle grinder or a cut-off wheel, grind down the tang on the bump stop (Figure 3). This will make room for the bump stop stud, which will go through the hole in the frame bracket (Figure 4).

9. Removing the shocks.

Remove the shocks from the lower mounts for the second time.

10. Installing the anti-sway bar.

Let the bar hang by the forgings. Grease the bushings, then rotate the bar up and secure it in place. *Note:* the center bend in the anti-sway bar should go up. The bar is not centered front to rear on the brackets, but is centered with respect to the axle.

11. Bolting to the shock mount.

Bolt the shocks on the outside with the supplied hardware.

12. Reinstall shocks.

13. Tighten all the bolts, road test and re-check the fittings.

Figure 4

