

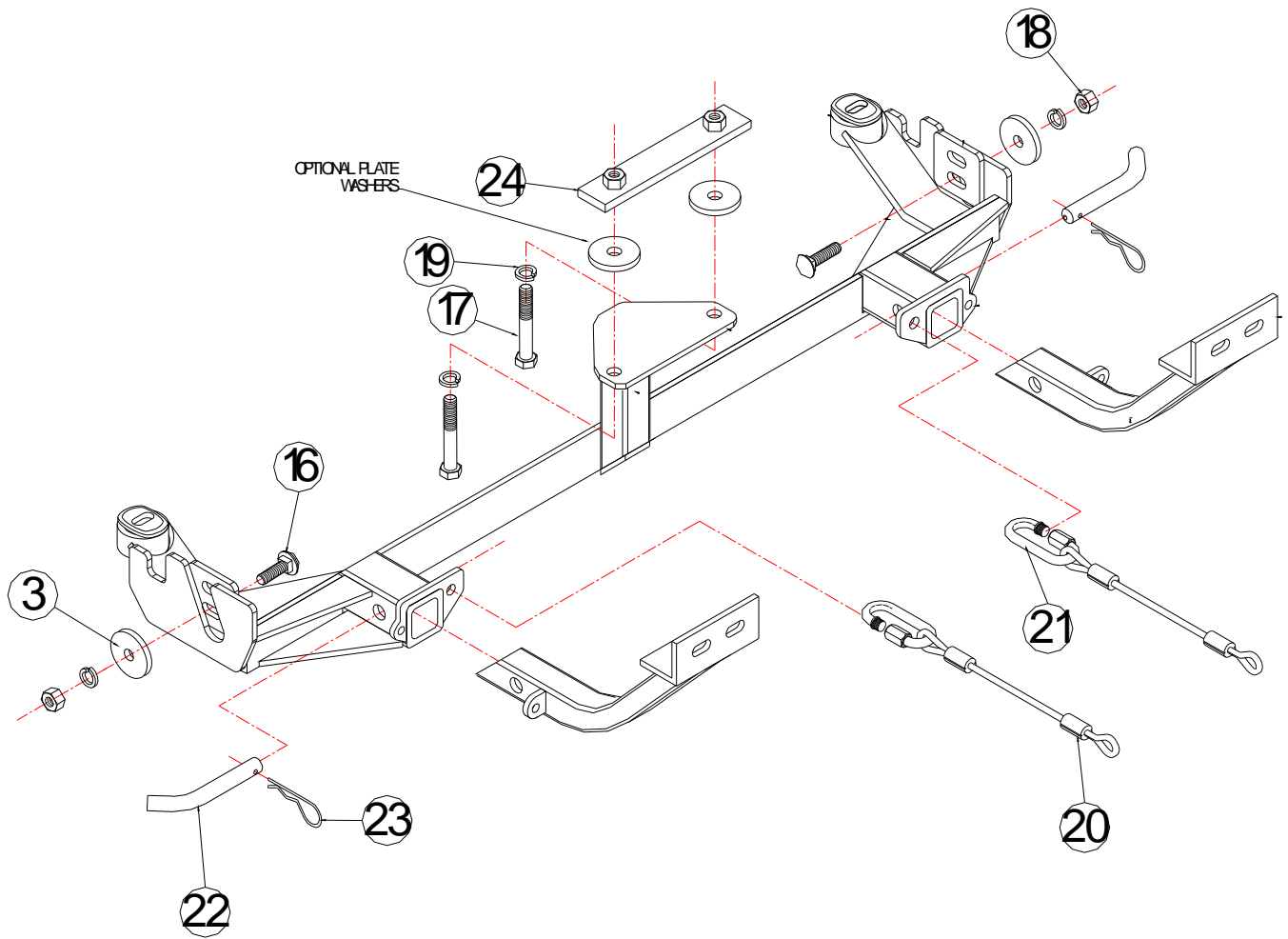


# BASEPLATE KIT INSTALLATION INSTRUCTIONS

**KIT# 1149-1**

01/12/09

ROADMASTER, Inc. 6110 NE 127th Ave. Vancouver, WA 98682 1-800-669-9690 fax 360-735-9300 www.roadmasterinc.com



## Hardware

Part	Qty.	Thickness	Width	Length	Material Type	Part No.
3	4	1/2	2		Plate Washers	350351-00
16	2	1/2	1-3/4		Carriage Bolts	350094-00
17	2	1/2	3		Bolts	350096-00
18	4	1/2			Nuts	350258-00
19	4	1/2			Lock Washers	350309-00
20	2		10"		Safety Cables	500646-10
21	2				Cable Connectors	200008-00
22	2		5/8		Draw Pins	357035-00
23	2		1/8		Spring Pins	357036-00
24	1	3/8	1-1/2	8	Threaded Backing Plate	100021-00

ROADMASTER, INC.

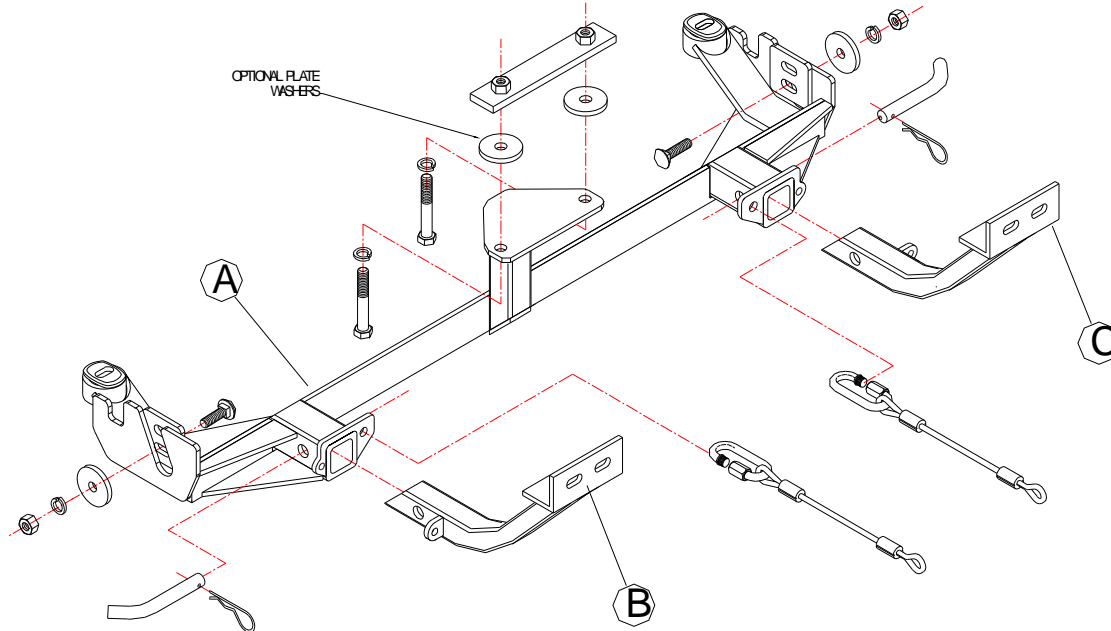


# BASEPLATE KIT INSTALLATION INSTRUCTIONS

KIT# 1149-1

01/12/09

ROADMASTER, Inc. 6110 NE 127th Ave. Vancouver, WA 98682 1-800-669-9690 fax 360-735-9300 www.roadmasterinc.com



**IMPORTANT:** All baseplates **must** be assembled with all the bolts left loose for final adjustment and positioning (before tightening) unless otherwise instructed. All bolts **must** be torqued for proper strength. If more than one bolt is used per fastening point, the diagram may only show one. Use flat washers over all slotted holes and lock washers on all fasteners.

## WARNING

Failure to heed these warnings or follow the installation instructions may result in a voided warranty, loss of towed vehicle, personal injury or death.

- Do not weld or modify this baseplate or its components. Welding or modification will void the warranty.
- Do not use this document as a basis to design/fabricate a baseplate, as it may not show all parts or structural components.
- We strongly recommend professional installation.
- If the towed vehicle has been in an accident, it must be properly repaired before attaching the baseplate. Do not install the baseplate if any structural frame damage is found.
- The installer must use all bolts and parts supplied. If running changes were made by the vehicle manufacturer after this kit was designed, some bolts or other fasteners may no longer be the correct size. It is the installer's responsibility to verify this kit is securely fastened to the vehicle.
- Use Loctite® Red on all bolts used to secure this baseplate. Torque all bolts to the specifications found at the end of these instructions. Do not over-torque the bolts or failure may occur.
- The installer must inspect the baseplate to ensure adequate clearance, particularly around hoses, air conditioner lines, radiators, etc. or non-warranty failure may result.
- Roadmaster manufactures many styles of baseplates. If your baseplate has removable arms, they must be removed before driving the vehicle, unless the arms can be pinned or padlocked in place. If not secured, the arms could vibrate out.
- Some motorhome chassis have such a tight turning radius that you can damage your motorhome, towed vehicle, tow bar or baseplate while turning sharply. Before getting on the road, test your turning radius in an empty parking lot. Turning too sharply could result in non-warranty damage to your towing system, motorhome and/or towed vehicle.
- Do not back up with the towed vehicle attached or non-warranty damage will occur to your towing system or vehicles.
- The safety cables must connect the towing vehicle to the towed vehicle frame to frame, with the cables crossed, with enough slack for sharp turns. See cable instructions for proper routing. Failure to do so will result in non-warranty damage and/or the loss of the towed vehicle.
- This kit is designed for use with ROADMASTER tow bars and ROADMASTER adapters only. Using this kit with other brands, without an approved ROADMASTER adapter, may result in non-warranty damage or injury.
- Receiver extensions and out-of-level towing situations of 3 inches or more. This can cause the system to swing much higher and lower, causing excessive strain on the tow bar, baseplate and frame. That can cause the towing system to fail, causing property damage, personal injury or even death. If you must use a receiver extension or drop hitch to tow, it will reduce your receiver's weight capacity by 1/3 to avoid damaging your system. Never use more than one extension and/or drop hitch, as this will void your warranty.
- Every 3,000 miles, the owner must inspect all mounting points for cracks or fatigue, and check the fasteners for proper torque, according to the bolt torque requirements chart on the last page of these instructions.
- The owner must follow the vehicle manufacturer's instructions to prepare the vehicle for towing. Failure to do so may cause severe damage to the vehicle.
- This baseplate is only warranted for the original installation. Installing a used baseplate on another vehicle is not recommended and will void the warranty.



# BASEPLATE KIT INSTALLATION INSTRUCTIONS

**KIT# 1149-1**

01/12/09

ROADMASTER, Inc. 6110 NE 127th Ave. Vancouver, WA 98682 1-800-669-9690 fax 360-735-9300 www.roadmasterinc.com

ROADMASTER, INC.

This bracket is one of our XL Series which is designed to be partly removable (Fig.A). The main receiver brace mounts to the existing front tie down plates, bumper and front sub frame mount bolts. The bumper fascia will have to be trimmed slightly to fit.



2. **Important:** please use all supplied bolts and parts and read all instructions carefully before beginning this installation. The majority of questions you may have can be answered within the text, and proper installation will ensure safe and secure travel. Now, begin the installation. Begin by removing the front grille ( four top fasteners and five bottom plastic snap fasteners) (Fig.B,D). *Note:* the fastener under the headlight has to be squeezed on both sides to reattach the plastic ear retainers (Fig.C).

3. Next remove two plastic fasteners near the head lights (Fig.E), two front plastic fasteners in the fender splash panels (Fig.F), then two more holding the lower fascia to the radiator cross member. Remove a bolt (10mm head) from each fender fascia joint and pull forward to remove the fascia.



4. Block and secure the subframe, then remove the large front sub frame mounting bolts on each side.



# BASEPLATE KIT INSTALLATION INSTRUCTIONS

**KIT# 1149-1**

01/12/09

ROADMASTER, Inc. 6110 NE 127th Ave. Vancouver, WA 98682 1-800-669-9690 fax 360-735-9300 www.roadmasterinc.com



Fig.G

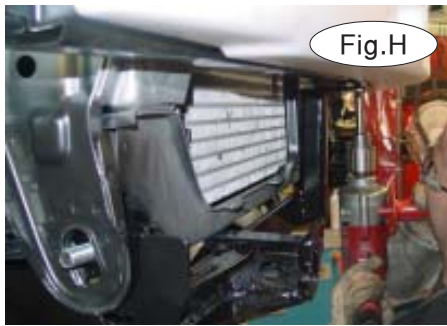


Fig.H



Fig.I

5. Hold the main receiver brace against the bottom of the bumper and between the outer front tie down plates (Fig.G).
6. Bolt through the rear of the receiver brace with the sub frame mounting bolts removed in step three and tighten (Fig.G).
7. Now bolt through the receiver brace and the tie down plates on each side with 1/2" x 1 3/4" carriage bolts, plate washers, lock washers and nuts. Align the brace against the bottom of the bumper core and tighten to hold in position (Fig.G,H).
8. The following step requires drilling two holes into the bottom of the bumper core through the first wall of the U channel. Use a long 17/32" drill bit to drill two holes through the lower two walls of the bumper core using the brace as a drill template (Fig.H).
9. Place the large threaded backing plate in the middle of the bumper core above the holes you have just drilled.
10. Bolt through the brace mounting plate and the bumper with two 1/2" x 3" bolts, and lock washers. *Note:* if needed use optional plate washers as alignment spacers.
10. Torque all bolts to the specifications below at this time.
11. Trial fit the fascia and trim as needed to fit around the center and sides of the main brace (Fig.I). Once a fit is achieved, reinstall reversing step 2.
12. Trim the fender splash panels to fit and replace all fasteners removed in step 2.
12. Insert the front braces into the receiver braces and pin with 5/8" draw pins and 1/8" spring pins.
13. Mount the tow bar according to the manufacturer's instructions.
14. Attach the 10" safety cables to the receiver braces with the provided cable connectors. Attach the other end to the tow vehicle's safety cables and the tow bar.

### BOLT TORQUE REQUIREMENTS

*Note:* The torque values represented below are intended as general guidelines. Torque requirements for specific applications may vary. Roadmaster does not warrant this information to be accurate for all applications and disclaims all liability for any claims or damages which may result from its use.

STANDARD BOLTS			METRIC BOLTS			METRIC BOLTS		
Thread Size	Grade	Torque	Thread Size	Grade	Plated / Unplated	Thread Size	Grade	Plated / Unplated
5/16	5	13 ft./lb.	8mm-1.0	8.8	20 ft./lb. 18 ft./lb.	12mm-1.25	8.8	70 ft./lb. 65 ft./lb.
3/8	5	23 ft./lb.	8mm-1.25	8.8	19 ft./lb. 18 ft./lb.	12mm-1.5	8.8	66 ft./lb. 61 ft./lb.
7/16	5	37 ft./lb.	10mm-1.25	8.8	38 ft./lb. 36 ft./lb.	12mm-1.75	8.8	65 ft./lb. 60 ft./lb.
1/2	5	56 ft./lb.	10mm-1.5	8.8	37 ft./lb. 35 ft./lb.	14mm-2.0	8.8	104 ft./lb. 97 ft./lb.
5/8	5	150 ft./lb.						

All illustrations and specifications contained herein are based on the latest information available at the time of publication approval. ROADMASTER, INC. reserves the right to make changes at any time without notice in material, specification and models or to discontinue models.