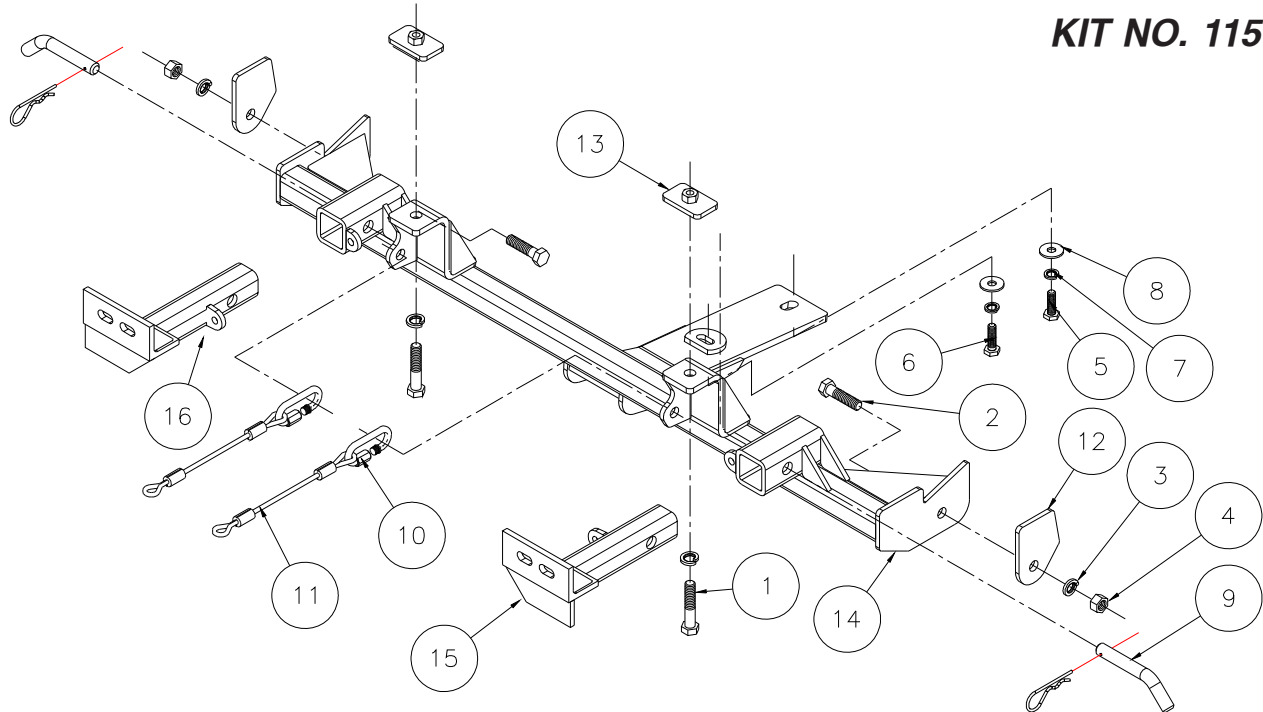


# MOUNTING BRACKET KIT INSTALLATION INSTRUCTIONS

ROADMASTER, Inc. 6110 NE 127th Ave. Vancouver, WA 98682 1-800-669-9690 fax 360-735-9300 www.roadmasterinc.com

KIT NO. 1150-1



04/29/09

**IMPORTANT:** All brackets **must** be assembled with all the bolts left loose for final adjustment and positioning (before tightening) unless otherwise instructed. All bolts **must** be torqued for proper strength. If more than one bolt is used per fastening point, the diagram may only show one.

- Use flat washers over all slotted holes
- Use lock washers on all fasteners

ROADMASTER Limited Warranty, including One-Year Conditional Warranty Text and Product Registration Card, in Carton.

## WARNING

Failure to follow these instructions can result in property damage, personal injury or even death.

- Installation of most mounting brackets requires moderate mechanical aptitude and skills. We strongly recommend professional installation by an experienced installer.
- The installer must read the instructions and use all bolts and parts supplied. Failure to do so could result in loss of the towed vehicle.
- Use Loctite® Red on all bolts used for mounting this bracket.
- Do not use this document for custom fabrication, as it may not show all parts or structural components. Custom fabrication or an attempt to copy this bracket design could result in loss of the towed vehicle.
- Every 3,000 miles, the owner must inspect the fasteners for proper torque, according to the bolt torque requirements chart on the last page of these instructions. The owner must also inspect all mounts and brackets for cracks or other signs of fatigue every 3,000 miles. Failure to do so could result in loss of the towed vehicle.
- The owner must check the vehicle manufacturer's instructions for the proper procedure(s) to prepare the vehicle for towing. Some vehicles must be equipped with a transmission lube pump, an axle disconnect, driveline disconnect or free-wheeling hubs before they can be towed. Failure to properly equip the vehicle will cause severe damage to the transmission.
- If running changes were made by the vehicle manufacturer after this bracket was designed, some bolts or other fasteners in the hardware pack may no longer be the correct size. It is the installer's responsibility to verify that the bracket is securely fastened to the vehicle and fitted with the correct hardware to account for these changes. Failure to securely

fasten the bracket could result in loss of the towed vehicle.

- If the towed vehicle has been in an accident, it must be properly repaired before attaching the bracket. Do not install the bracket if any structural frame damage is found. Failure to repair the damage could result in the loss of the towed vehicle.
- Some motorhome chassis have such a tight turning radius that you can damage your motorhome, towed vehicle, tow bar or bracket while turning sharply. Before getting on the road, test your turning radius in an empty parking lot. Turning too sharply could result in non-warranty damage to towing system, motorhome and/or towed vehicle.
- Do not back up with the towed vehicle attached or non-warranty damage will occur to your towing system, motorhome and/or towed vehicle.
- The safety cables must connect the towing vehicle to the towed vehicle frame to frame, with the cables crossed, with enough slack for sharp turns. Refer to the cable instructions for proper routing. Failure to leave enough slack in the safety cables, or failure to connect the safety cables frame to frame, will result in the loss of the towed vehicle.
- This bracket is designed for use with ROADMASTER tow bars and ROADMASTER adaptors only. Using this bracket with other brands, without an approved ROADMASTER adaptor, may result in non-warranty damage or injury.
- Upon final installation, the installer must inspect the bracket to ensure adequate clearance, particularly around hoses, air conditioner lines, radiators, etc., or non-warranty damage to the towed vehicle will result.
- This bracket is only warranted for the original installation. Installing a used bracket on another vehicle is not recommended and will void the warranty.

# MOUNTING BRACKET KIT INSTALLATION INSTRUCTIONS

ROADMASTER, Inc. 6110 NE 127th Ave. Vancouver, WA 98682 1-800-669-9690 fax 360-735-9300 www.roadmasterinc.com

- Important:** please use all supplied bolts and parts and read all instructions carefully before beginning this installation. The majority of questions you may have can be answered within the text, and proper installation will ensure safe and secure travel. Now, begin the installation. This bracket kit is one of our XL Series, which is partly removable. The kit consists of a main receiver brace, two front braces and a hardware pack and utilizes existing holes in the frame, tie down plates and center engine cradle as mounting points. Begin by removing the center tow ring and two mounting bolts from the center motor cross member. They will not be replaced.
- Hold the main receiver brace between the front tie down plates and bolt through the middle mounting plate with two 10mm bolts, lock washers, an fender washers. *Note:* the longer 10mm x 1.25 x 35mm bolt will go in the front hole and the 30mm bolt will go into the rear hole. Tighten these bolts to hold the receiver brace in position.
- Now, using the shaped backing plates on the outside of the tie down plates, bolt through the receiver brace, tie down plates, and backing plates with 1/2" x 2" bolts, lock washers and nuts.
- Now, using a 1/2" drill bit and the pre-existing holes in the bumper brace as templates, drill through the bottom two layers of the bumper core.
- Insert a 1/4" x 1 1/2" x 2 1/2" nutted backing plate between the two layers of the bumper core. Using the supplied 1/2" x 2 3/4" bolts and lock washers, bolt through the support brace, bumper core and into the nutted backing plate.
- Align and torque all bolts to the specifications below.
- Insert the front braces through the front grille into the receiver brace and pin with 5/8" draw pins and 1/8" spring pins.
- Mount the tow bar according to the manufacturer's instructions. Connect the 12" safety cables to the bumper core support brace with the included cable connectors. Connect the other end to the tow vehicle's safety cables and the tow bar.

## HARDWARE LIST

ITEM	QTY	NAME	MATERIAL
1	2	1/2" x 2 3/4" BOLT	350100-00
2	2	1/2" x 2" BOLT	350097-00
3	4	1/2" LOCK WASHER	350309-00
4	2	1/2" HEX NUT	350258-00
5	1	10mm x 1.25 x 30 mm BOLT	356201-00
6	1	10mm x 1.25 x 35 mm BOLT	356202-00
7	2	10mm LOCK WASHER	355715-00
8	2	10mm FENDER WASHER	355716-00
9	2	DRAW PIN W/ CLIP	357035-00
10	2	QUICK LINK	200008-00
11	2	SAFETY CABLE 12"	650646-12
12	2	BACKING PLATE	A-002774
13	2	1/4" x 1 1/2" x 2 1/2" BACKING PLATE W/ NUT	C-000687
14	1	MAIN RECEIVER	C-001807
15	1	DRIVER SIDE ARM	C-001808
16	1	PASSENGER SIDE ARM	C-001809

## BOLT TORQUE REQUIREMENTS

Note: The torque values represented below are intended as general guidelines. Torque requirements for specific applications may vary. Roadmaster does not warrant this information to be accurate for all applications and disclaims all liability for any claims or damages which may result from its use.

STANDARD BOLTS			METRIC BOLTS			METRIC BOLTS		
Thread Size	Grade	Torque	Thread Size	Grade	Plated/Unplated	Thread Size	Grade	Plated/Unplated
5/16	5	13 ft./lb.	8mm-1.0	8.8	20 ft./lb. 18 ft./lb.	12mm-1.25	8.8	70 ft./lb. 65 ft./lb.
3/8	5	23 ft./lb.	8mm-1.25	8.8	19 ft./lb. 18 ft./lb.	12mm-1.5	8.8	66 ft./lb. 61 ft./lb.
7/16	5	37 ft./lb.	10mm-1.25	8.8	38 ft./lb. 36 ft./lb.	12mm-1.75	8.8	65 ft./lb. 60 ft./lb.
1/2	5	56 ft./lb.	10mm-1.5	8.8	37 ft./lb. 35 ft./lb.	14mm-2.0	8.8	104 ft./lb. 97 ft./lb.
5/8	5	150 ft./lb.						