

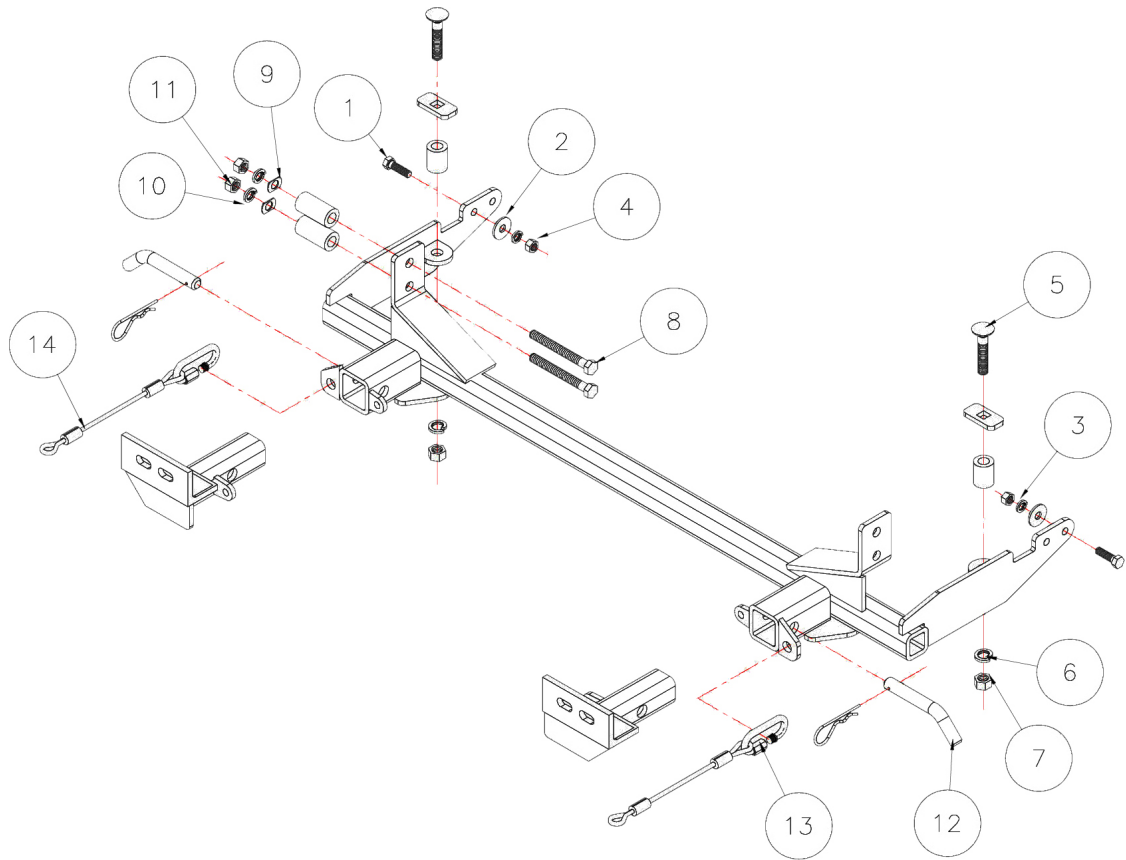


BASEPLATE KIT INSTALLATION INSTRUCTIONS

KIT# 1169-1

03/14/12
KS

ROADMASTER, Inc. 6110 NE 127th Ave. Vancouver, WA 98682 360-896-0407 fax 360-735-9300 www.roadmasterinc.com



Item	Qty.	Length	Width	Hardware	Part No.
1	2	1 1/4"	3/8"	BOLT	350056-00
2	2		3/8"	FLAT WASHER	350304-50
3	2		3/8"	LOCK WASHER	350305-00
4	2		3/8"	NUT	350254-00
5	2	2 1/2"	1/2"	CARRIAGE BOLT	350369-00
6	2		1/2"	LOCK WASHER	350309-00
7	2		1/2"	NUT	350258-00
8	2	3 1/2"	7/16"	BOLT	350082-00
9	2		1/2"	CLIPPED FLAT WASHER	A-001789
10	2		7/16"	LOCK WASHER	350307-00
11	2		7/16"	NUT	350256-20
12	2			DRAW PIN / SPRING PIN	357035-00
13	2			CABLE CONNECTORS	200008-00
14	2	8"		SAFETY CABLES	500646-08

ROADMASTER, INC.

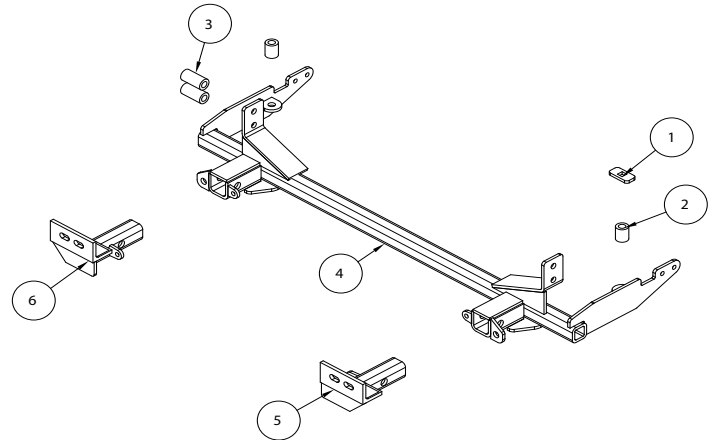


BASEPLATE KIT INSTALLATION INSTRUCTIONS

KIT# 1169-1

03/14/12
KS

ROADMASTER, Inc. 6110 NE 127th Ave. Vancouver, WA 98682 360-896-0407 fax 360-735-9300 www.roadmasterinc.com



Item	Qty	Part No.	Assembly
1	2	A-00040	BACKING PLATE
2	2	A-001055	PIPE SPACER
3	2	A-001056	PIPE SPACER
4	1	C-000625	MAIN RECEIVER BRACE WELDMENT
5	1	C-000626	DRIVER SIDE ARM WELDMENT
6	1	C-000627	PASSENGER SIDE ARM WELDMENT

IMPORTANT: All baseplates **must** be assembled with all the bolts left loose for final adjustment and positioning (before tightening) unless otherwise instructed. All bolts **must** be torqued for proper strength. If more than one bolt is used per fastening point, the diagram may only show one. Use flat washers over all slotted holes and lock washers on all fasteners.

WARNING

Failure to heed these warnings or follow the installation instructions may result in a voided warranty, loss of towed vehicle, personal injury or death.

- Do not weld or modify this baseplate or its components. Welding or modification will void the warranty.
- Do not use this document as a basis to design/fabricate a baseplate, as it may not show all parts or structural components.
- We strongly recommend professional installation.
- If the towed vehicle has been in an accident, it must be properly repaired before attaching the baseplate. Do not install the baseplate if any structural frame damage is found.
- The installer must use all bolts and parts supplied. If running changes were made by the vehicle manufacturer after this kit was designed, some bolts or other fasteners may no longer be the correct size. It is the installer's responsibility to verify this kit is securely fastened to the vehicle.
- Use Loctite® Red on all bolts used to secure this baseplate. Torque all bolts to the specifications found at the end of these instructions. Do not over-torque the bolts or failure may occur.
- The installer must inspect the baseplate to ensure adequate clearance, particularly around hoses, air conditioner lines, radiators, etc. or non-warranty failure may result.
- Roadmaster manufactures many styles of baseplates. If your baseplate has removable arms, they must be removed before driving the vehicle, unless the arms can be pinned or padlocked in place. If not secured, the arms could vibrate out.
- Some motorhome chassis have such a tight turning radius that you can damage your motorhome, towed vehicle, tow bar or baseplate while turning sharply. Before getting on the road, test your turning radius in an empty parking lot. Turning too sharply could

result in non-warranty damage to your towing system, motorhome and/or towed vehicle.

- Do not back up with the towed vehicle attached or non-warranty damage will occur to your towing system or vehicles.
- The safety cables must connect the towing vehicle to the towed vehicle frame to frame, with the cables crossed, with enough slack for sharp turns. See cable instructions for proper routing. Failure to do so will result in non-warranty damage and/or the loss of the towed vehicle.
- This kit is designed for use with ROADMASTER tow bars and ROADMASTER adapters only. Using this kit with other brands, without an approved ROADMASTER adapter, may result in non-warranty damage or injury.
- Receiver extensions and out-of-level towing situations of 3 inches or more. This can cause the system to swing much higher and lower, causing excessive strain on the tow bar, baseplate and frame. That can cause the towing system to fail, causing property damage, personal injury or even death. If you must use a receiver extension or drop hitch to tow, it will reduce your receiver's weight capacity by 1/3 to avoid damaging your system. Never use more than one extension and/or drop hitch, as this will void your warranty.
- Every 3,000 miles, the owner must inspect all mounting points for cracks or fatigue, and check the fasteners for proper torque, according to the bolt torque requirements chart on the last page of these instructions.
- The owner must follow the vehicle manufacturer's instructions to prepare the vehicle for towing. Failure to do so may cause severe damage to the vehicle.
- This baseplate is only warranted for the original installation. Installing a used baseplate on another vehicle is not recommended and will void the warranty.



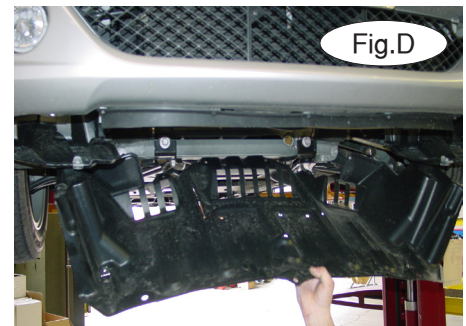
BASEPLATE KIT INSTALLATION INSTRUCTIONS

KIT# 1169-1

03/14/12
KS

ROADMASTER, Inc. 6110 NE 127th Ave. Vancouver, WA 98682 360-896-0407 fax 360-735-9300 www.roadmasterinc.com

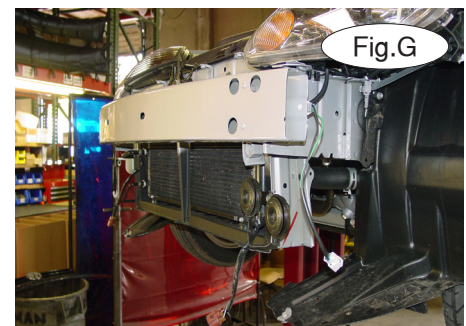
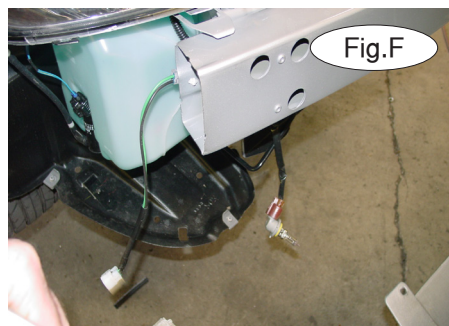
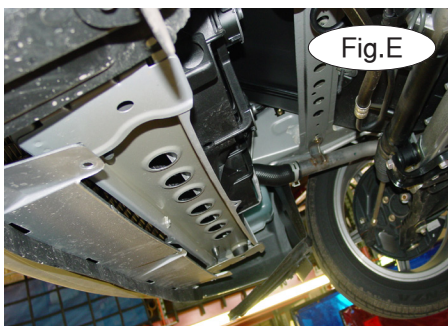
This bracket kit is one of our XL series, which is designed to be partly removable (Fig.A). The kit consists of the main receiver brace, two front arm braces, two lower braces and a hardware pack. The main receiver brace mounts behind the front bumper fascia to the inside of the frame. The lower braces attach to the front of the radiator support on each side. The front arm braces insert into the receivers on each side. Start by laying the kit out according to the illustration. This will give you a visual idea of how the kit installs and also confirm that all the components are present and accounted for.



1. **Important:** please use all supplied bolts and parts and read all instructions carefully before beginning this installation. The majority of questions you may have can be answered within the text, and proper installation will ensure safe and secure travel. Now, begin the installation by removing the four 10mm (head) fasteners in the top of the front bumper fascia (Fig.B).

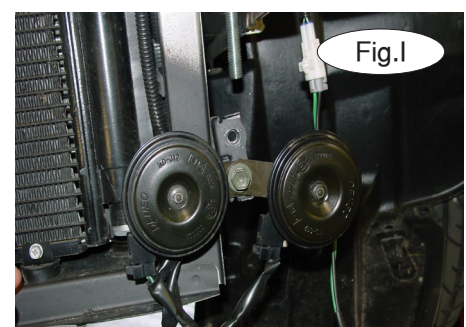
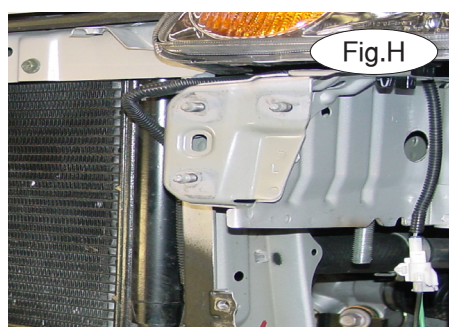
2. Remove a 10mm (head) bolt at the fascia and fenderwell junction on each side (Fig.C).

3. Remove the lower center splash panel underneath the fascia (thirteen 10mm head fasteners and three plastic fasteners) (Fig.D,E).



4. Pull forward on the fascia, disconnect the turn signal and marker lights (Fig.F), then continue to pull forward and remove (Fig.G). Set the fascia aside for now.

5. Remove the bumper core (three 14mm nuts per side) (Fig.H) and set aside.



6. Move to the drivers side of the frame and remove the top horn. Bolt both horns into the bottom mount as shown in Figure I.



BASEPLATE KIT INSTALLATION INSTRUCTIONS

KIT# 1169-1

03/14/12
KS

ROADMASTER, Inc. 6110 NE 127th Ave. Vancouver, WA 98682 360-896-0407 fax 360-735-9300 www.roadmasterinc.com

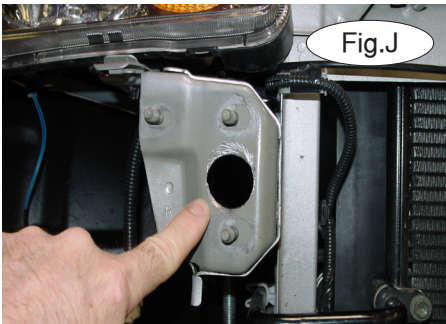


Fig.J

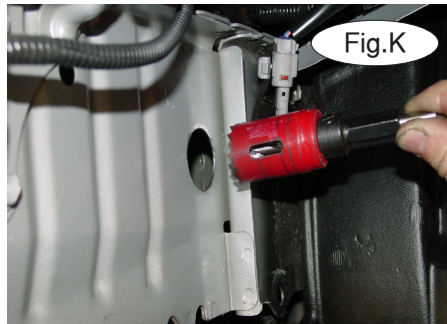


Fig.K

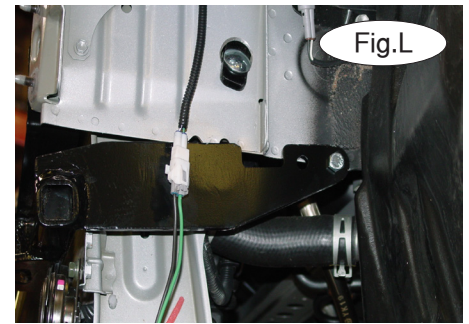


Fig.L

7. Using a 1¼" hole saw, enlarge the front frame hole (Fig.J) on the passenger side, then make an access hole on the side of each frame as shown in Figure K.

8. Hold the main receiver brace under the frame (Fig.L) and bolt through the driver's side front mounting holes with two stock 14mm (head) shoulder bolts (Fig.M) then bolt through the rear mounting holes on each side using 3/8" x 1¼" bolts flat washers and lock washers (Fig.M,N). *Note:* two mounting holes are at the back of the main brace on each side; use the front hole on the passenger side and the rear hole on the driver's side.

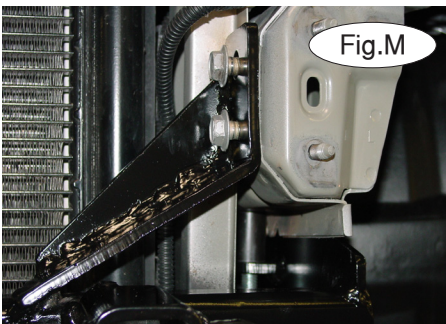


Fig.M

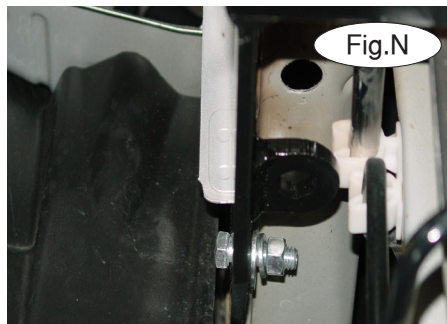


Fig.N

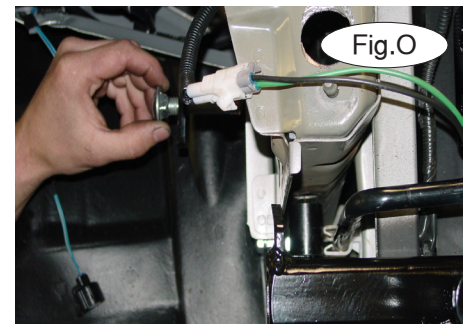


Fig.O

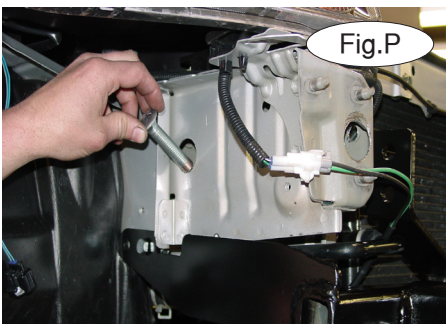


Fig.P

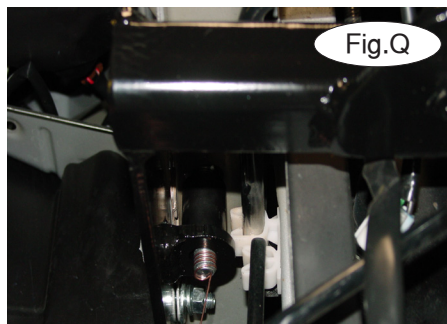


Fig.Q

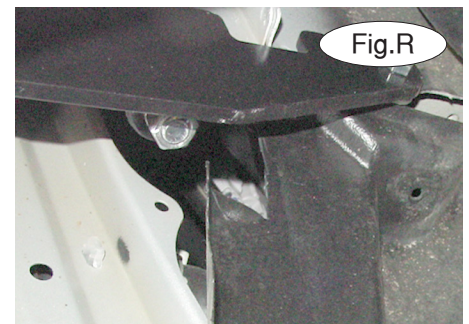


Fig.R

9. Find two 1¼" pipe spacers and position them between the frame and the back mounting tab under the existing frame hole on each side (Fig.O). Now, fishwire a ½" x 2½" carriage bolt and ¼" x 1" x 2" backing plate into the frame on each side through the access holes you created in a previous step (Fig.P). Pull the bolts through the bottom frame holes, the spacers and the brace (Fig.Q). Finish with lock washers and nuts (Fig.R). Tighten these bolts to align and position the receiver brace.

10. Tighten the remaining mounting bolts and align the main receiver brace.

11. Using the brace as a template, drill two 15/32" holes through the frame then position two 2" pipe spacers between the frame and brace (Fig.S).

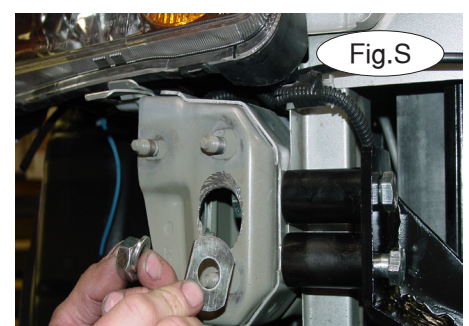


Fig.S



BASEPLATE KIT INSTALLATION INSTRUCTIONS

KIT# 1169-1

03/14/12
KS

ROADMASTER, Inc. 6110 NE 127th Ave. Vancouver, WA 98682 360-896-0407 fax 360-735-9300 www.roadmasterinc.com

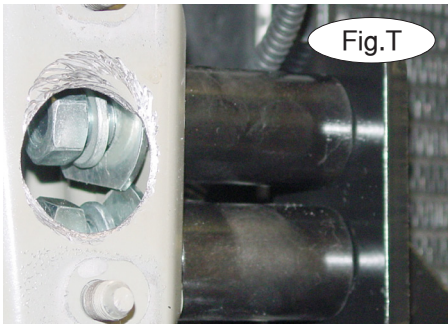


Fig.T

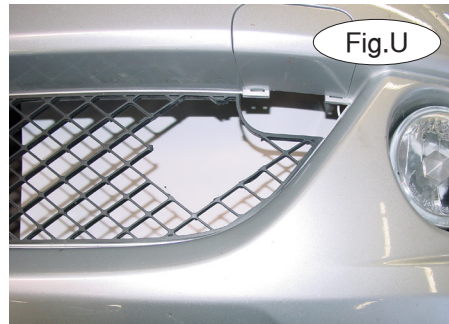


Fig.U



Fig.V

12. Bolt through the receiver brace, 2" pipe spacers and the frame with 7/16" x 3 1/2" bolts, 1/2" clipped flat washers, 7/16" lock washers and 7/16" nuts (Fig.T).

13. Torque all mounting bolts to the torque specifications found at the the end of these instructions.

14. Replace the bumper core removed in step 5.

15. Hold the fascia in position and mark the grille where the receiver will have to protrude and trim to fit (Fig.V).

16. Trim the lower splash guard to fit around the brace (Fig.U).

17. Reinstall the fascia reversing steps 1 through 4.

18. Install the front braces into the receivers and secure them in place with 5/8" draw pins and 3/16" spring pins (Fig.V).

19. Attach the safety cables to the front of the receivers with the supplied cable connectors and to the tow vehicle's safety cables (Fig.W).



Fig.W

BOLT TORQUE REQUIREMENTS

Note: The torque values represented below are intended as general guidelines. Torque requirements for specific applications may vary. Roadmaster does not warrant this information to be accurate for all applications and disclaims all liability for any claims or damages which may result from its use.

STANDARD BOLTS

Thread Size	Grade	Torque
5/16	5	13 ft./lb.
3/8	5	23 ft./lb.
7/16	5	37 ft./lb.
1/2	5	56 ft./lb.
5/8	5	150 ft./lb.

METRIC BOLTS

Thread Size	Grade	Plated / Unplated
8mm-1.0	8.8	20 ft./lb. 18 ft./lb.
8mm-1.25	8.8	19 ft./lb. 18 ft./lb.
10mm-1.25	8.8	38 ft./lb. 36 ft./lb.
10mm-1.5	8.8	37 ft./lb. 35 ft./lb.

METRIC BOLTS

Thread Size	Grade	Plated / Unplated
12mm-1.25	8.8	70 ft./lb. 65 ft./lb.
12mm-1.5	8.8	66 ft./lb. 61 ft./lb.
12mm-1.75	8.8	65 ft./lb. 60 ft./lb.
14mm-2.0	8.8	104 ft./lb. 97 ft./lb.

All illustrations and specifications contained herein are based on the latest information available at the time of publication approval. ROADMASTER, INC. reserves the right to make changes at any time without notice in material, specification and models or to discontinue models.