

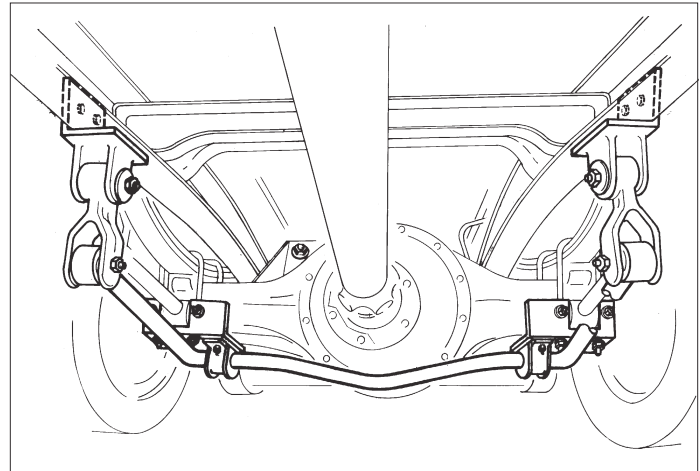


Installation Instructions

Thank you for purchasing this anti-sway bar kit. Please read through these instructions before installation.

Rear Anti-Sway Bar Kit for Navistar 4000LP through 1999

part #1179-101
1-1/2" diameter



INTRODUCTION

Thank you for purchasing this anti-sway bar kit. This kit is designed to improve the handling characteristics of your Navistar 4000LP by reducing the body roll and balancing the weight transfer during cornering. The anti-sway bar kit is engineered for long life and trouble-free performance. For maximum suspension control, use this kit along with our front anti-sway bar kit.

All the hardware needed for installation is included in this kit. Refer to the PARTS LIST in these instructions to identify the parts.

SUGGESTED TOOLS

The following tools are suggested to complete the installation procedures:

- General hand tools
- 1/2" drill
- Hacksaw
- Socket set: 3/4" drive
- Drill bits
- Torque wrench

WARNING

- If raising the vehicle to install the anti-sway bar, always support the vehicle with jack stands at both frame rails or at the rear axle before working underneath. Ensure that the jack stands are securely positioned, and are rated at or above the weight of the vehicle.
- The installer must read the instructions and use all bolts and parts supplied. Use only the parts supplied by ROADMASTER to install this kit.
- Minor modifications are sometimes necessary due to slight vehicle variations, even for the same year, make and model.
- If running changes were made by the manufacturer after this kit was designed, there may be weldments, braces, gussets, or other structural items which interfere with the installation. It is the installer's responsibility to allow for these running changes without sacrificing the structural integrity of the anti-sway bar. Failure to securely fasten the anti-sway bar could result in property damage,

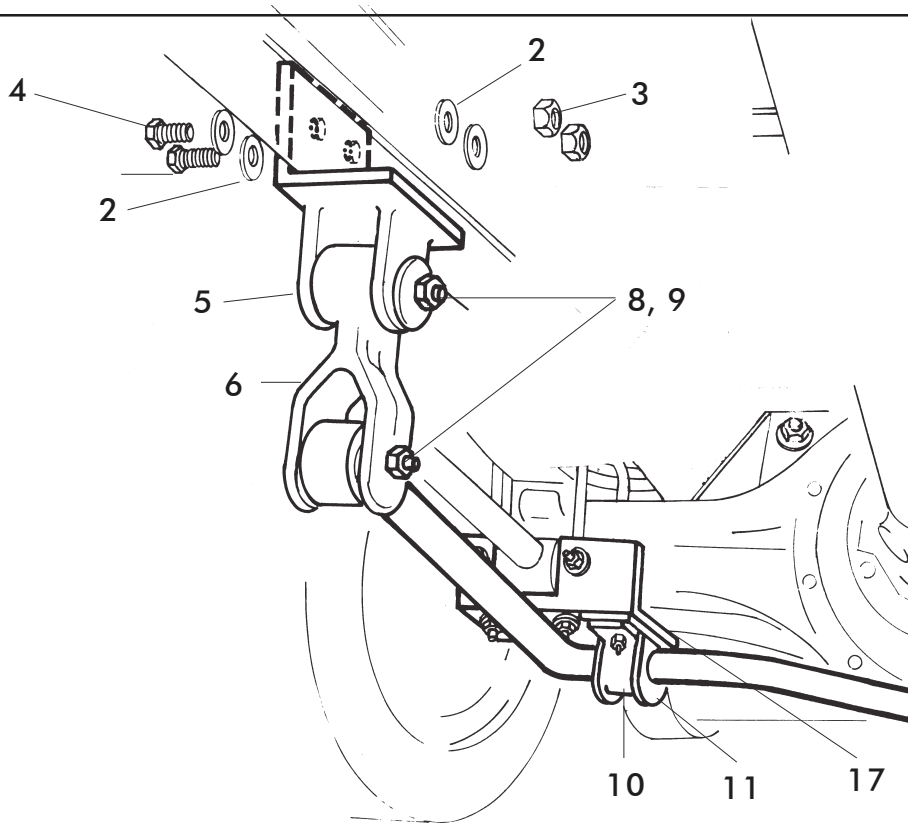
personal injury or even death.

- ROADMASTER will not be responsible for any damage or injury resulting from any modification or alteration.
- Check ALL the fasteners for tightness before and after road testing the vehicle.
- Do not use this document for custom fabrication, as it may not show all parts or structural components.
- Do not use an air impact wrench when re-installing bolts, as stripped threads may result.
- This anti-sway bar is only warranted for the original installation. Installing a used anti-sway bar on another vehicle is not recommended and will void the warranty.

WARNING

Failure to follow these instructions can result in property damage, personal injury or even death.

PARTS LIST



Part #1179-101

Part #	Description	Qty	Part #	Description	Qty
1. 580092-00	Anti-sway bar, 1-1/2"	1	10. B140	Bracket, saddle	2
2. 350308-00	Washer, 1/2" cut	8	11. 205217-10	Bushing, poly	2
3. 350259-00	Nyloc nut	4	12. B241	Bracket, spacer plate	4
4. 350096-80	Bolt, 1/2 x 1-3/4"	4	13. 350076-80	Bolt, 7/16 x 2"	4
5. B239	Bracket, end link	2	14. 350304-80	Washer, 3/8" cut	4
6. B209	End link assembly	2	15. 350304-30	Washer, "D" 3/8"	4
7. 350312-00	Washer, 5/8" cut	4	16. 350256-02	Nyloc nut, 7/16"	4
8. 350158-00	Bolt, 5/8 x 4"	4	17. B254/255	Bracket, S.B. Mount left/right	1
9. 350263-00	Nyloc nut, 5/8	4	18. 400011-30	Grease	1

INSTALLATION

The following instructions must be followed in the order listed to ensure a proper installation and to preserve the ROADMASTER warranty.

1. **Remove the parts from the box and match the parts with the list.**

Make sure that the kit has all the parts shown on the PARTS LIST on page 2.

2. **Apply the parking brake and block the wheels.**

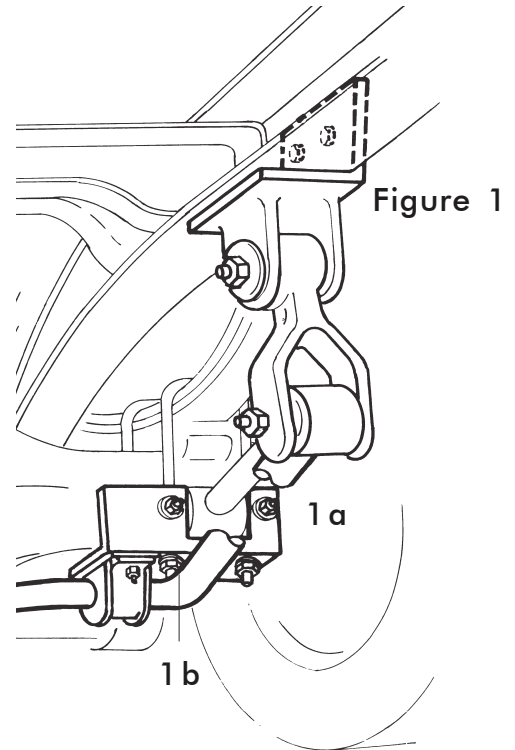
The following procedures can be done with the wheels of the vehicle on the ground. Put blocks under the front and back of the wheels to prevent the vehicle from moving.

3. **Remove the nuts from the front U-bolts and from the studs for the rear torque arm brackets.**

Remove the lock nuts and washers from the studs on the brackets at the front of the rear torque arm mounts. Remove the nuts from the front U-bolt for both axle/spring mounts. Push the U-bolts up about an inch (Figure 1).

4. **Install the rear mount brackets.**

Install the mount bracket on the studs for the torque arm mount. Install the original washers and lock nuts. Push the U-bolt down through the holes in the mount bracket. Install the washers and locknuts (Figure 1a). Tighten the nuts for the torque arm studs to 220 ft.-lbs. Tighten the U-bolt lock nuts to 280 ft.-lbs.

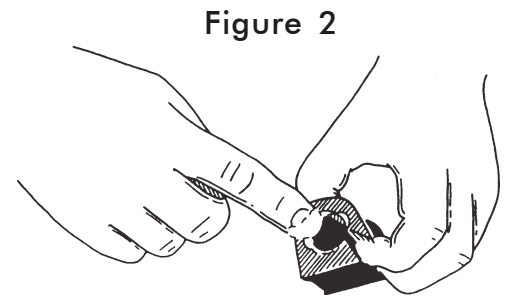


5. **Cut the U-bolt.**

Use a hacksaw to cut all but three threads from the inner end of each U-bolt. The U-bolt must not touch the anti-sway bar when installed (Figure 1b).

6. **Install the anti-sway bar to the rear axle.**

Put a thorough coat of grease on the inside of each bushing (Figure 2). Install the bushings on the sway bar near each arm. Install the saddle brackets on the bushings.



7. **Mount the anti-sway bar to axle brackets.**

Install 2" long bolts with round washers in axle brackets from above. Mount two spacer plates on these bolts.

HINT. Use a large rubber band to hold the spacer plates in place.

Mount the anti-sway bar to the brackets using D shaped washers and the supplied nuts. Torque 7/16" bolts to 75 ft.-lbs.

INSTALLATION

8. Install the mount bracket on the end links.

Align the holes in the bracket with the hole in the endlink bushing. Insert the bolt and washers and loosely install the nut (Figure 3a).

9. Install the endlinks onto the anti-sway bar.

Align the holes in the endlink shackle with the hole in the anti-sway bar bushing sleeve. Install the bolt, washer and nut (Figure 3b).

10. Mark the location for the mount holes.

Lift the ends of the anti-sway bar so that the arms are horizontal. Align the bracket on the frame so that the endlink assemblies are vertical. Make sure that the top horizontal surface of the brake is touching the bottom surface of the frame. Mark the outer side of the frame at the center of each of the two holes in the mount bracket (Figure 3c). Check for wires and lines on the inside of frame rail before drilling holes.

11. Drill the holes.

Drill a hole in the vertical surface of the frame for each 1/2" bolt (Figure 3d).

12. Install the bolts for the mount brackets.

Align the holes in the mount bracket with the holes in the frame. Insert the bolts/washers from the outer side of the brackets. Install the washers and locknuts.

13. Tighten all the fasteners.

Tighten the nuts for the saddle bracket studs to 75 ft.-lbs. Tighten the nuts for the anti-sway bar end bolts and the bolts for the endlink top bushing to 75 ft.-lbs.

14. Test drive the vehicle and listen for noises. Inspect the anti-sway bar assembly after the test drive.

WARNING

After road testing, re-check all fasteners for proper tightness — if a fastener has worked loose or fallen off, re-tighten or replace it. Without all kit components properly tightened or in place, the anti-sway bar will not stabilize the vehicle at full capacity, which may cause reduced cornering ability or other reductions in vehicle handling or performance.

Failure to follow these instructions may result in property damage, personal injury or even death.

WARNING

The anti-sway bar is not a load-bearing component

Do not tow or hoist the vehicle using the anti-sway bar or its mounting brackets as attachment points. The anti-sway bar is not designed to carry the weight of the vehicle and may collapse, which will damage the anti-sway bar components, the suspension, or other components. The vehicle will detach or fall, which may cause severe personal injury. Failure to follow these instructions may result in property damage, personal injury or even death.

Figures: 3c
3d

