

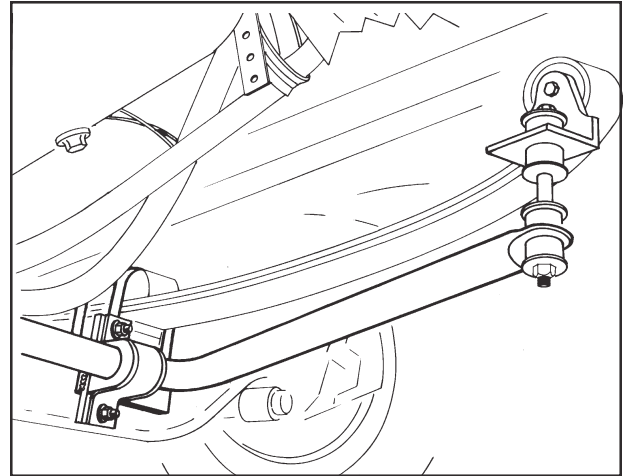


# Installation Instructions

*Thank you for purchasing this anti-sway bar kit. Please read through these instructions before installation.*

## Front Anti-Sway Bar Kit for the Navistar 4300LP

part # 1179-108  
1-1/2" diameter



## INTRODUCTION

Thank you for purchasing this front anti-sway bar kit. This kit is designed to improve the handling characteristics of your Navistar 4300LP by reducing the body roll and balancing the weight transfer during cornering. The anti-sway bar kit is engineered for long life and trouble-free performance. For maximum suspension control, use this kit along with our rear anti-sway bar kit.

All the hardware needed for installation is included in this kit. Refer to the PARTS LIST in these instructions to identify the parts.

## SUGGESTED TOOLS

The following tools are suggested to complete the installation procedures:

- General hand tools
- Jack stand
- Pry bar
- Torque wrench
- 5 ton jacks

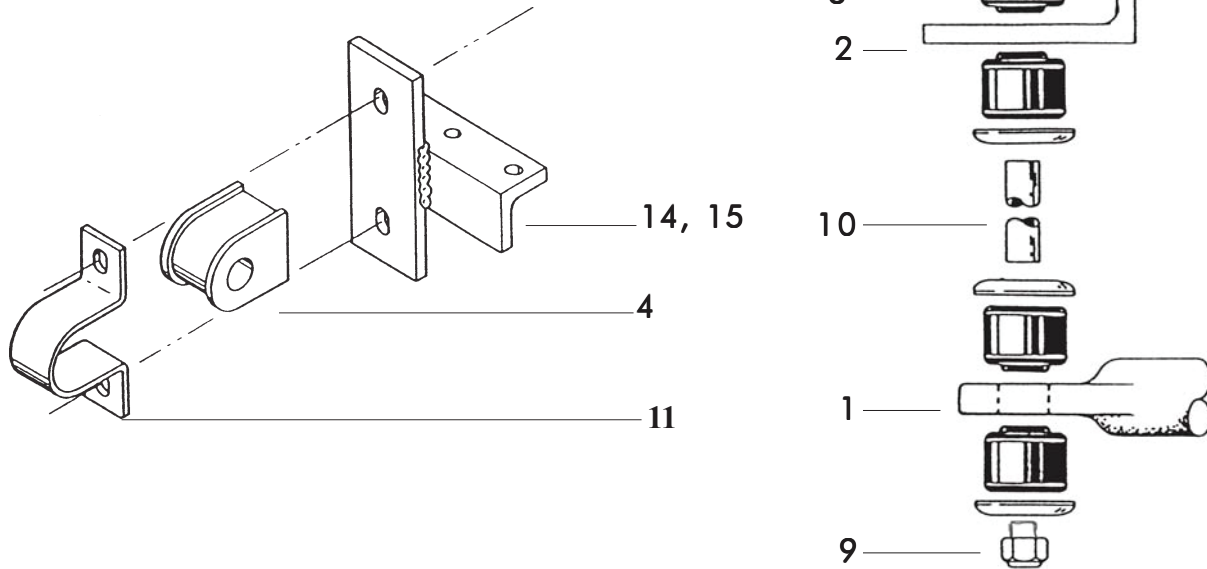
## WARNING

- If raising the vehicle to install the anti-sway bar, always support the vehicle with jack stands at both frame rails or at the rear axle before working underneath. Ensure that the jack stands are securely positioned, and are rated at or above the weight of the vehicle.
- The installer must read the instructions and use all bolts and parts supplied. Use only the parts supplied by ROADMASTER to install this kit.
- Minor modifications are sometimes necessary due to slight vehicle variations, even for the same year, make and model.
- If running changes were made by the manufacturer after this kit was designed, there may be weldments, braces, gussets, or other structural items which interfere with the installation. It is the installer's responsibility to allow for these running changes without sacrificing the structural integrity of the anti-sway bar. Failure to securely fasten the anti-sway bar could result in property damage, personal injury or even death.
- ROADMASTER will not be responsible for any damage or injury resulting from any modification or alteration.
- Check ALL the fasteners for tightness before and after road testing the vehicle.
- Do not use this document for custom fabrication, as it may not show all parts or structural components.
- Do not use an air impact wrench when re-installing bolts, as stripped threads may result.
- This anti-sway bar is only warranted for the original installation. Installing a used anti-sway bar on another vehicle is not recommended and will void the warranty.

## WARNING

**Failure to follow these instructions can result in property damage, personal injury or even death.**

# PARTS LIST



## Part #11179-108

Part #	Description	Qty	Part #	Description	Qty
1.	580039-00 Anti-sway bar	1	9.	350088-80 Bolt, end link, 7/16" x 7"	2
2.	B237 Bracket end link	2	10.	205508-00 Sleeve	2
3.	205381-00 Grommet	8	11.	B141 Bracket, U-clamp	2
4.	205217-10 Bushing, poly	2	12.	350308-20 Washer	8
6.	350259-00 Nut, 1/2"	8	13.	350273-00 Bolt, 1/2" x 1-1/2"	4
7.	357434-00 Washer, cup	8	14.	B417 Bracket, left hanger	1
8.	350256-02 Nut, 7/16"	2	15.	B418 Bracket, right hanger	1
			16.	400011-30 AQUALUBE Grease	1

\* Sway bar not shown

# INSTALLATION

The following instructions must be followed in the order listed to ensure a proper installation and to preserve the ROADMASTER warranty.

**1. Remove nuts on the front anti-sway bar hanger brackets.**

Locate U-bolts holding springs to axle. Remove only the front two nuts on each side (Figure 1).

**2. Install hanger brackets.**

Note: the brackets are unique to the left and right side. The angle faces down and the welded plate goes on the inside of the leaf spring. Reattach with original nuts and washers. Torque to the factory torque specs.

**3. Remove the nuts from the front mount bolts for the leaf springs.**

Remove the nut at the inner side of the front spring mount.

**4. Install the bracket for the endlinks.**

Align the hole in the bracket with bolt for the spring mount. Install the bracket with the lower arm toward the center of the vehicle. Reinstall nut and torque to factory specs.

**5. Install the split bushings on the anti-sway bar.**

Lubricate the center hole of the split bushings with the grease provided (Figure 2). Install the bushings over the anti-sway bar near the arms. Install the saddle brackets over the bushings.

**6. Install the anti-sway bar.**

Lift the anti-sway bar into position so that the saddle bracket holes align with the hanger bracket holes. Use provided fasteners (350273-00) to attach brackets. Tighten to 55-65 ft.-lbs.

**7. Install a cup washer and grommet on the end link.**

Install a cup washer on the link bolt so that the inside of the washer is away from the head of the bolt (Figure 1). The inside of all cup washers must be toward the grommets. Slide the grommet onto the bolt. From the bottom, insert the link bolt into the hole at the end of the sway bar and hold it in position. Slide another grommet and cup washer on the bolt so the grommet touches the sway bar.

**8. Insert the link assembly into the bracket.**

Pivot the bar up and insert the link bolt into the mount bracket at the end of the spring. From above install another grommet, cup washer and the lock nut. Tighten the nut until the grommets just start to compress (Figure.3).

Figure 1

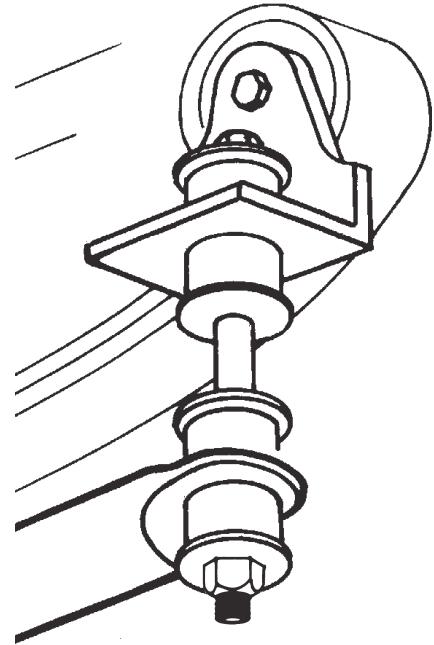


Figure 2

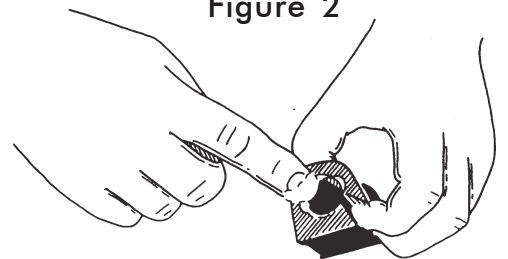
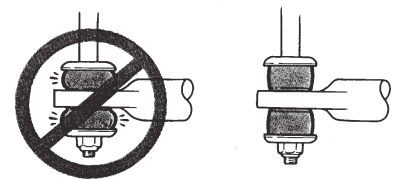


Figure 3



## 9. Assemble the other endlink in the same manner.

**Caution:** Do not over-tighten the grommets.

### **WARNING**

Over-tightening the grommets may cause premature failure of the grommets and/or the end links. If the grommets fail, the anti-sway bar will not stabilize the vehicle at full capacity, which may cause reduced cornering ability or other reductions in vehicle handling or performance.

Failure to follow these instructions may result in property damage, personal injury or even death.

## 10. Test drive and inspect the installation.

Install the wheels and lugnuts. Use the jack to remove the jack stands. Tighten the lug nuts to the specified tightness. Now, road-test the vehicle: listen for any unusual noises, and make sure there is no abnormal looseness in the handling. Check all fasteners for proper tightness.

### **WARNING**

After road testing, re-check all fasteners for proper tightness — if a fastener has worked loose or fallen off, re-tighten or replace it. Without all kit components properly tightened or in place, the anti-sway bar will not stabilize the vehicle at full capacity, which may cause reduced cornering ability or other reductions in vehicle handling or performance.

Failure to follow these instructions may result in property damage, personal injury or even death.

### **WARNING**

#### **The anti-sway bar is not a load-bearing component**

Do not tow or hoist the vehicle using the anti-sway bar or its mounting brackets as attachment points. The anti-sway bar is not designed to carry the weight of the vehicle and may collapse, which will damage the anti-sway bar components, the suspension, or other components. The vehicle will detach or fall, which may cause severe personal injury.

Failure to follow these instructions may result in property damage, personal injury or even death.