

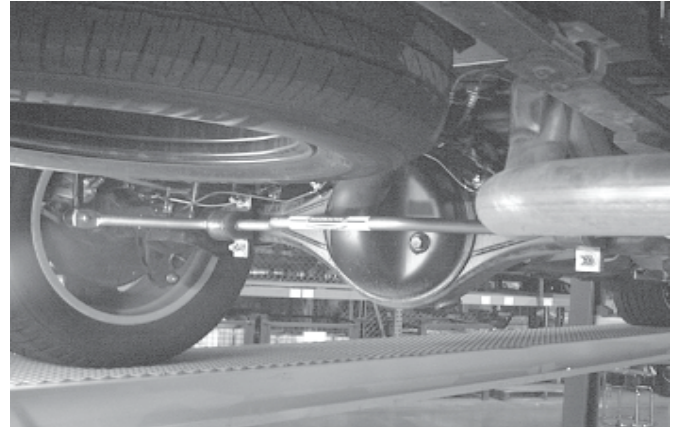


Installation Instructions

Thank you for purchasing this anti-sway bar kit. Please read through these instructions before installation.

Rear Anti-Sway Bar Kit Toyota Tundra 5.7 Liter V8 ('07-'10)

part #1189-102
1" diameter



INTRODUCTION

Thank you for purchasing this anti-sway bar kit. This kit is designed to improve the handling characteristics of your Toyota by reducing the body roll and balancing the weight transfer during cornering. The anti-sway bar kit is engineered for long life and trouble-free performance.

All the hardware needed for installation is included in this kit. Refer to the PARTS LIST in these instructions to identify the parts.

SUGGESTED TOOLS

The following tools are suggested to complete the installation procedures:

- 1/8" & 1/2" drill bits
- Drill
- Standard wrenches
- Standard sockets

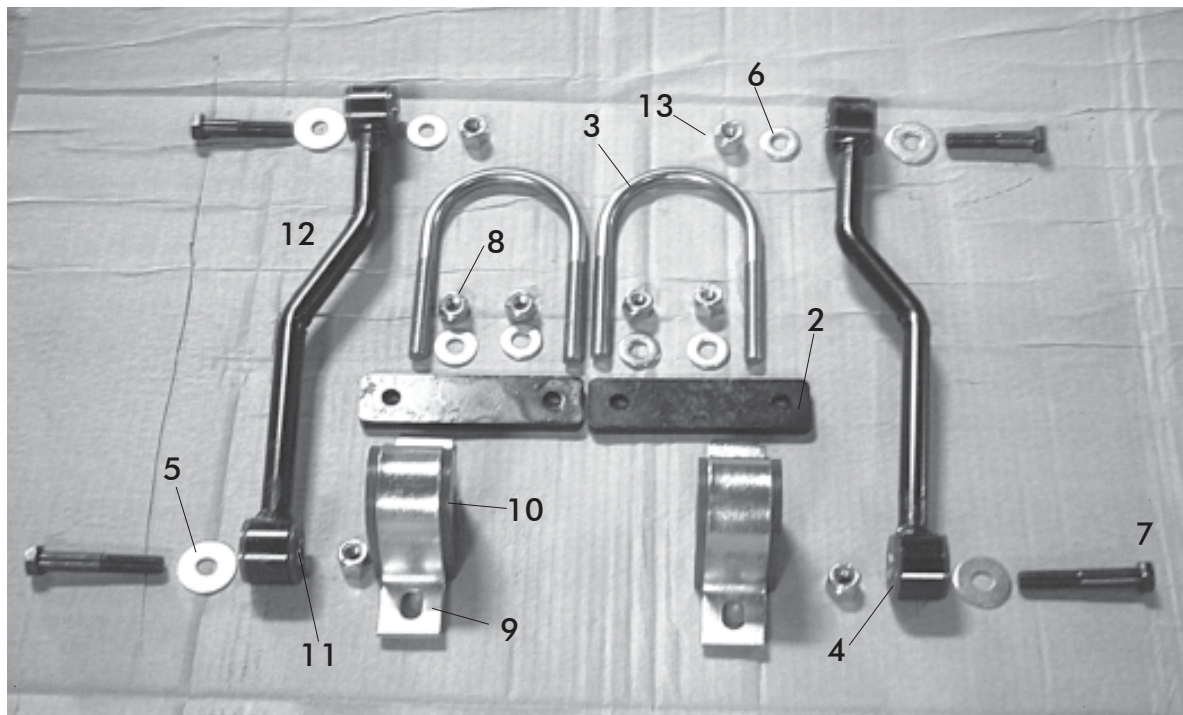
WARNING

- If raising the vehicle to install the anti-sway bar, always support the vehicle with jack stands at both frame rails or at the rear axle before working underneath. Ensure that the jack stands are securely positioned, and are rated at or above the weight of the vehicle.
- The installer must read the instructions and use all bolts and parts supplied. Use only the parts supplied by ROADMASTER to install this kit.
- Minor modifications are sometimes necessary due to slight vehicle variations, even for the same year, make and model.
- If running changes were made by the manufacturer after this kit was designed, there may be weldments, braces, gussets, or other structural items which interfere with the installation. It is the installer's responsibility to allow for these running changes without sacrificing the structural integrity of the anti-sway bar. Failure to securely fasten the anti-sway bar could result in property damage, personal injury or even death.
- ROADMASTER will not be responsible for any damage or injury resulting from any modification or alteration.
- Check ALL the fasteners for tightness before and after road testing the vehicle.
- Do not use this document for custom fabrication, as it may not show all parts or structural components.
- Do not use an air impact wrench when re-installing bolts, as stripped threads may result.
- This anti-sway bar is only warranted for the original installation. Installing a used anti-sway bar on another vehicle is not recommended and will void the warranty.

WARNING

Failure to follow these instructions can result in property damage, personal injury or even death.

PARTS LIST



Part #1189-102

Part #	Description	Qty	Part #	Description	Qty
1. *580210-00	Anti-sway bar	1	9. B141	U-clamp	2
2. B601	Spacer Plate	2	10. 205235-10	Split Bushings	2
3. 357359-00	U-bolt	2	11. 205501-00	Sleeve	4
4. 205223-00	Grommet	8	12. B602	Endlink	2
5. 350308-00	1/2" Cut washer	4	13. 350259-00	1/2" NC Nylon Ins Nut	4
6. 350308-20	1/2 Flat Washer	6	14. 350530-01	Collar Double Set*	2
7. 350099-80	1/2" x 2.5 Bolt	4	15. *400011-30	Aqualube	1
8. 350259-01	1/2" Lock Nut	4			

* not shown

INSTALLATION

The following instructions must be followed in the order listed to ensure a proper installation and to preserve the ROADMASTER warranty.

1. Install the axle plates and U-bolts.

Gently move the brake line up and away from the axle to allow room for the u-bolts and axle plates. There are four 12mm bolts that can be removed to facilitate the installation. For the driver's side, the u-bolt will be located on the outside of the brake line keeper bracket, which is located on the front side of the rear axle (Figure 1). On the passenger side, the u-bolt will mount on the inside of the brake line keeper (toward the wheel - Figure 2). Then, slide the axle plate over the u-bolt on each side (Figure 3). Replace the four 12mm bolts.

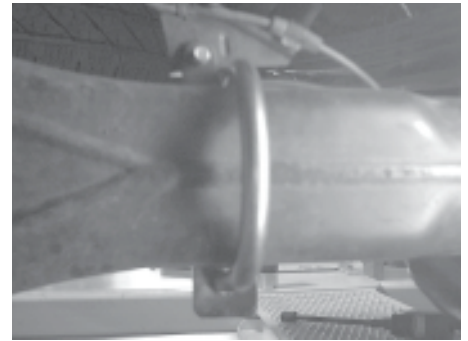
Figure 1



2. Mount the anti-sway bar to the axle.

Lubricate the bushings with the supplied grease. Then, mount the bushing clamps over the bushings and fit on to the u-bolts (Figure 4). Finish with the supplied nuts (350259-01) and bolts (350308-20) and leave loose.

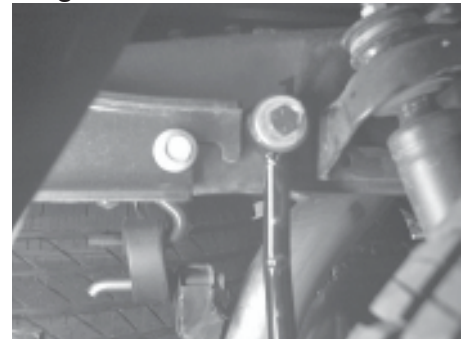
Figure 2



3. Attach the endlinks.

Bolt the endlinks to the anti-sway bar (leave loose for now). Rotate the bar up so it is parallel with the ground. Locate the passenger side endlink between the trailer hitch bracket and the shock mount bracket. Mark the frame and drill a 1/2" hole (Figure 3). Now, match the driver's side endlink angle to the passenger side, drill and bolt up.

Figure 3



4. Install the bushing stops.

Once the endlinks are installed and tight, install the bushing stops on the outside of the bushing on each side.

5. Test drive and check fasteners.

WARNING

After road testing, re-check all fasteners for proper tightness — if a fastener has worked loose or fallen off, re-tighten or replace it. Without all kit components properly tightened or in place, the anti-sway bar will not stabilize the vehicle at full capacity, which may cause reduced cornering ability or other reductions in vehicle handling or performance.

Failure to follow these instructions may result in property damage, personal injury or even death.

WARNING

The anti-sway bar is not a load-bearing component

Do not tow or hoist the vehicle using the anti-sway bar or its mounting brackets as attachment points. The anti-sway bar is not designed to carry the weight of the vehicle and may collapse, which will damage the anti-sway bar components, the suspension, or other components. The vehicle will detach or fall, which may cause severe personal injury.

Failure to follow these instructions may result in property damage, personal injury or even death.

Figure 4

