

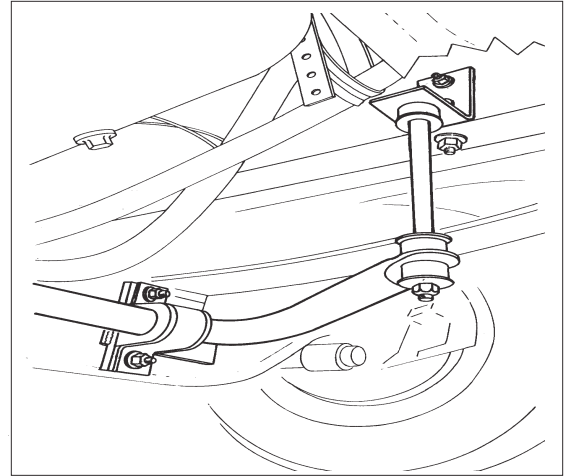


Installation Instructions

Thank you for purchasing this anti-sway bar kit. Please read through these instructions before installation.

Front Anti-Sway Bar Kit for the Freightliner FL60

part #1209-100
1-1/2" diameter



INTRODUCTION

Thank you for purchasing this anti-sway bar kit. This kit is designed to improve the handling characteristics of your Freightliner FL60 by reducing the body roll and balancing the weight transfer during cornering. The anti-sway bar kit is engineered for long life and trouble-free performance. For maximum suspension control, use this kit along with our rear anti-sway bar kit.

All the hardware needed for installation is included in this kit. Refer to the PARTS LIST in these instructions to identify the parts.

SUGGESTED TOOLS

The following tools are suggested to complete the installation procedures:

- General hand tools
- Wrenches: 5/8", 11/16", 3/4", 15/16"
- Sockets: 5/8", 11/16", 3/4", 15/16"
- Torque wrench
- Vise-grips

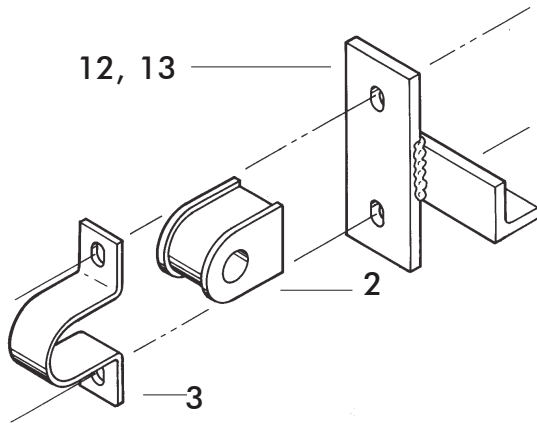
WARNING

- If raising the vehicle to install the anti-sway bar, always support the vehicle with jack stands at both frame rails or at the rear axle before working underneath. Ensure that the jack stands are securely positioned, and are rated at or above the weight of the vehicle.
- The installer must read the instructions and use all bolts and parts supplied. Use only the parts supplied by ROADMASTER to install this kit.
- Minor modifications are sometimes necessary due to slight vehicle variations, even for the same year, make and model.
- If running changes were made by the manufacturer after this kit was designed, there may be weldments, braces, gussets, or other structural items which interfere with the installation. It is the installer's responsibility to allow for these running changes without sacrificing the structural integrity of the anti-sway bar. Failure to securely fasten the anti-sway bar could result in property damage, personal injury or even death.
- ROADMASTER will not be responsible for any damage or injury resulting from any modification or alteration.
- Check ALL the fasteners for tightness before and after road testing the vehicle.
- Do not use this document for custom fabrication, as it may not show all parts or structural components.
- Do not use an air impact wrench when re-installing bolts, as stripped threads may result.
- This anti-sway bar is only warranted for the original installation. Installing a used anti-sway bar on another vehicle is not recommended and will void the warranty.

WARNING

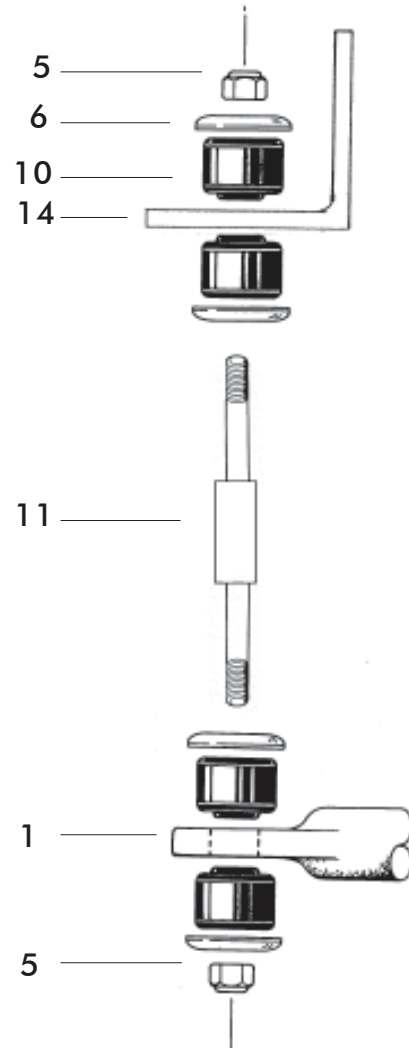
Failure to follow these instructions can result in property damage, personal injury or even death.

PARTS LIST



Part #1209-100

| Part # | Description | Qty |
|--------|---------------------------------|-----|
| 1. | 580041-00 Anti-sway bar, 1-1/2" | 1 |
| 2. | 205217-10 Bushing, poly | 2 |
| 3. | B141 Bracket, u-clamp | 2 |
| 4. | 350096-80 Bolt, 1/2" x 1-3/4" | 4 |
| 5. | 350256-02 Locknut, 7/16" | 4 |
| 6. | 357434-00 Washer, cup | 8 |
| 7. | 350308-20 Washer, 1/2" | 16 |
| 8. | 350259-00 Locknut, 1/2" | 8 |
| 9. | 350273-00 Bolt, 1/2" x 1-1/2" | 4 |
| 10. | 205200-00 Grommet, poly | 8 |
| 11. | B253 Stud, endlink | 2 |
| 12. | B356 Bracket, left hanger | 1 |
| 13. | B357 Bracket, right hanger | 1 |
| 14. | B270 Bracket, endlink/frame | 2 |
| 15. | 400011-30 AQUALUBE Grease | 1 |



INSTALLATION

The following instructions must be followed in the order listed to ensure a proper installation and to preserve the ROADMASTER warranty.

1. Remove the nuts on the front axle u-bolts.

Locate the u-bolts holding the springs to axle. Remove only the front two nuts on each side.

2. Install the hanger brackets.

Note that the brackets are unique to the left and right side. The welded plate goes on the inside of the leaf spring. Reattach with factory nuts and washers. Torque to the factory torque specs.

3. Locate the internal frame rail, where the cross-member attaches.

At the back end of the internal frame rail, there are two existing holes (Figure 1). Use these holes to mount the provided endlink brackets. Use the provided 1/2" bolts (350273-00), washers and nuts. Tighten securely.

4. Install the saddle brackets and bushings.

Lubricate the inside of the split bushings (Figure 2) and install the bushings on the anti-sway bar near the arms. Slide the saddle brackets over the split bushings.

5. Install the anti-sway bar assembly on the hanger brackets.

Lift the anti-sway bar assembly into position so that the saddle bracket holes align with the hanger bracket holes. Use the provided 1/2" fasteners (350096-80) to attach brackets (Figure 3). Tighten the fasteners to 60 ft.-lbs.

Be sure to attach the anti-sway bar with the dip hanging down as shown in Figure 3.

6. Install a cup washer and grommet on the endlink.

Install a cup washer on the link bolt so that the inside of the washer is away from the shoulder of the link bolt. Install a grommet next to the cup washer (Figure 4).

7. Install the endlink to the anti-sway bar end.

Install the link bolt to the top side of the anti-sway bar end. Slide another grommet and cup washer on the end link and secure it with a lock nut (Figure 3 - 350256-02). Repeat on other side.

Figure 1

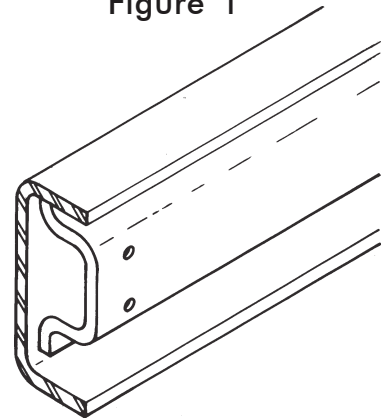


Figure 2

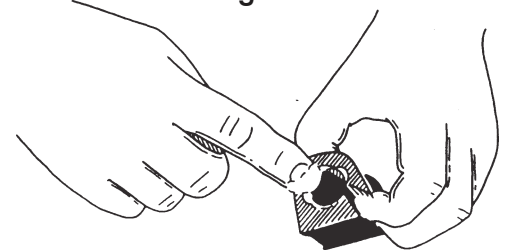


Figure 3

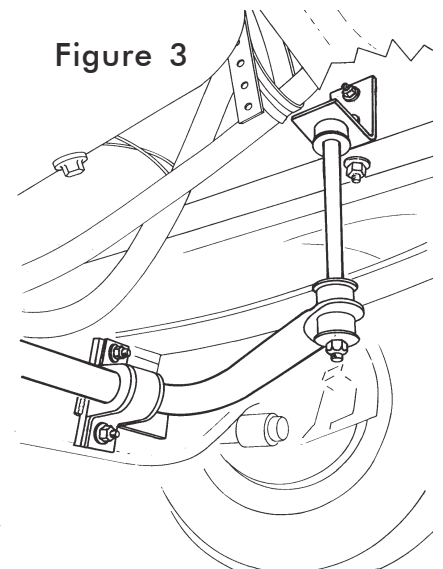
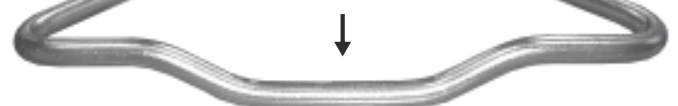


Figure 4



INSTALLATION

8. Lift the anti-sway bar and attach it to the brackets.

Slide another cup washer and grommet onto the endlink. Repeat on the opposite side. Insert both end links into bracket holes and slide the grommet and cup washer on. Fasten with the lock nut (350256-02). Tighten nuts so that the grommets just start to change shape (Figure 5).

Note: If the endlinks spin, use vise-grips to hold them in place.

WARNING

Over-tightening the grommets may cause premature failure of the grommets and/or the end links. If the grommets fail, the anti-sway bar will not stabilize the vehicle at full capacity, which may cause reduced cornering ability or other reductions in vehicle handling or performance.

Failure to follow these instructions may result in property damage, personal injury or even death.

9. Road test. Listen for noise.

WARNING

After road testing, re-check all fasteners for proper tightness — if a fastener has worked loose or fallen off, re-tighten or replace it. Without all kit components properly tightened or in place, the anti-sway bar will not stabilize the vehicle at full capacity, which may cause reduced cornering ability or other reductions in vehicle handling or performance.

Failure to follow these instructions may result in property damage, personal injury or even death.

WARNING

The anti-sway bar is not a load-bearing component

Do not tow or hoist the vehicle using the anti-sway bar or its mounting brackets as attachment points. The anti-sway bar is not designed to carry the weight of the vehicle and may collapse, which will damage the anti-sway bar components, the suspension, or other components. The vehicle will detach or fall, which may cause severe personal injury.

Failure to follow these instructions may result in property damage, personal injury or even death.

