



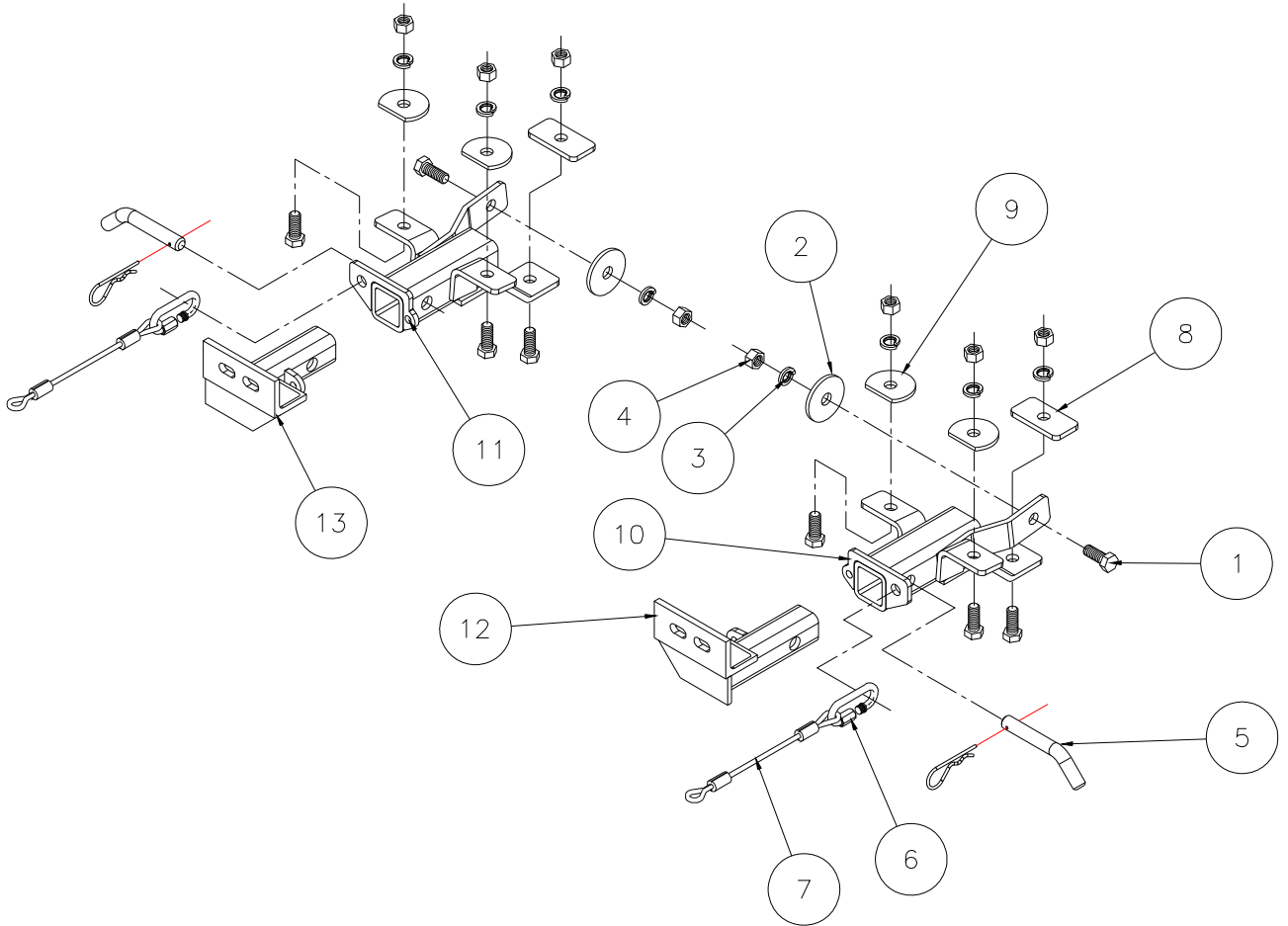
# MOUNTING BRACKET KIT INSTALLATION INSTRUCTIONS

**KIT# 1430-1**

07/22/07  
KB

ROADMASTER, Inc. 6110 NE 127th Ave. Vancouver, WA 98682 1-800-669-9690 fax 360-735-9300 www.roadmasterinc.com

ROADMASTER, INC.



Item	Qty	Name	Part No.
1	8	1/2" x 1 1/4" BOLT	350094-00
2	2	1/2" PLATE WASHER	350351-00
3	8	1/2" LOCK WASHER	350309-00
4	8	1/2" HEX NUT	350258-00
5	2	5/8" DRAW PIN W/ CLIP	357035-00
6	2	QUICK LINK	200008-00
7	2	8" SAFETY CABLE	500646-08
8	2	1/4" x 1 1/2" x 3" BACKING PLATE W/ 9/16" HOLE	A-000185
9	4	1/2" CLIPPED PLATE WASHER	A-001511
10	1	DRIVER SIDE RECEIVER	C-001554
11	1	PASSENGER SIDE RECEIVER	C-001555
12	1	DRIVER SIDE ARM	C-001556
13	1	PASSENGER SIDE ARM	C-001557
14	1	INSERT	25-4259-00



# MOUNTING BRACKET KIT INSTALLATION INSTRUCTIONS

**KIT# 1430-1**

07/22/07  
KB

ROADMASTER, Inc. 6110 NE 127th Ave. Vancouver, WA 98682 1-800-669-9690 fax 360-735-9300 www.roadmasterinc.com

This is one of our XL series brackets, which allows the visible front portion of the bracket to be easily removed from the front of the vehicle (Fig.A and Fig.B). The bracket kit consists of a passenger and driver side main receiver brace, two removable front bracket arms and a hardware pack. The main receiver braces mount to the bumper and the removable front brackets install in the main receiver braces.

Before starting the installation, lay out the kit components in order, as they will be used. This will give you a visual idea of how the components work, and will also confirm that everything is present and accounted for.



Fig.A



Fig.B

**IMPORTANT:** All brackets **must** be assembled with all the bolts left loose for final adjustment and positioning (before tightening) unless otherwise instructed. All bolts **must** be torqued for proper strength. If more than one bolt is used per fastening point, the diagram may only show one.

- Use flat washers over all slotted holes
- Use lock washers on all fasteners

ROADMASTER Limited Warranty, including One-Year Conditional Warranty Text and Product Registration Card, in Carton.

## WARNING

- Do not use this document for custom fabrication, as it may not show all parts or structural components. Custom fabrication or an attempt to copy this bracket design could result in loss of the towed vehicle.
- The owner must inspect all mounts and brackets before each use for cracks or other signs of fatigue. Also, inspect the fasteners for proper torque, according to the bolt torque requirements chart on the last page. Failure to do so could result in loss of the towed vehicle.
- The owner must check the manufacturer's instructions for the proper procedure(s) to prepare the vehicle for towing. Some vehicles must be equipped with a transmission lube pump, an axle disconnect, driveline disconnect or free-wheeling hubs before they can be towed. Failure to properly equip the vehicle will cause severe damage to the transmission.
- The installer must read the instructions and use all bolts and parts supplied. Failure to securely fasten the bracket could result in loss of the towed vehicle.
- If running changes were made by the vehicle manufacturer after this bracket was designed, some bolts or other fasteners in the included hardware pack may no longer be the correct size. It is the installer's responsibility to verify that the bracket is securely fastened to the vehicle, and fitted with the correct hardware, to account for these changes. Failure to securely fasten the bracket could result in loss of the towed vehicle.
- If the towed vehicle has been in an accident, it must be properly repaired before attaching the bracket. Do not install the bracket if any structural frame damage is found. Failure to repair the damage may result in the loss of the towed vehicle.

- Some motorhome chassis have such a tight turning radius that you can damage your motorhome, towed vehicle, tow bar or bracket while turning sharply. Before getting on the road, test your turning radius in an empty parking lot. Turning too sharply could result in non-warranty damage to towing system, motorhome and/or towed vehicle.
- Do not back up with the towed vehicle attached or non-warranty damage will occur to your towing system, motorhome and/or towed vehicle.
- The safety cables must connect the towing vehicle to the towed vehicle frame to frame, with the cables crossed, with enough slack for sharp turns. Refer to the cable instructions for proper routing. Failure to leave enough slack in the safety cables, or failure to connect the safety cables frame to frame, will result in the loss of the towed vehicle.
- This bracket is designed for use with ROADMASTER tow bars and ROADMASTER adaptors only. Using this bracket with other brands, without an approved ROADMASTER adaptor, may result in non-warranty damage or injury.
- Upon final installation, the installer must inspect the bracket to ensure adequate clearance, particularly around hoses, air conditioner lines, radiators, etc., or non-warranty damage to the towed vehicle will result.
- This bracket is only warranted for the original installation. Installing a used bracket on another vehicle is not recommended and will void the warranty.

## WARNING

Failure to follow these instructions can result in property damage, personal injury or even death.

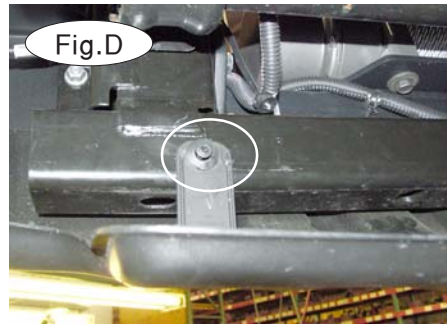


# MOUNTING BRACKET KIT INSTALLATION INSTRUCTIONS

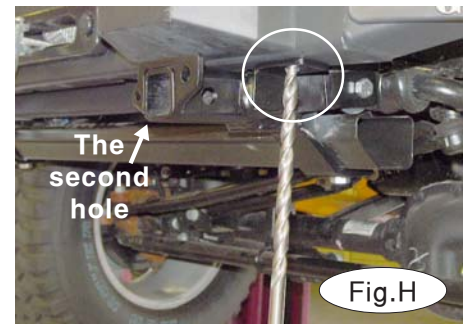
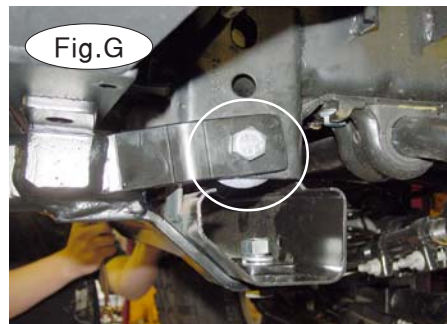
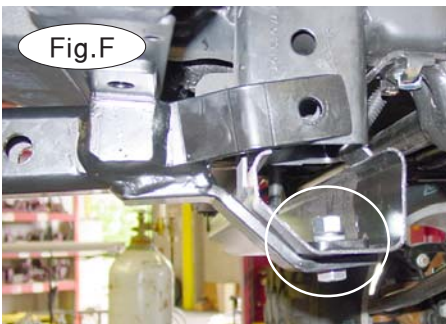
**KIT# 1430-1**

07/22/07  
KB

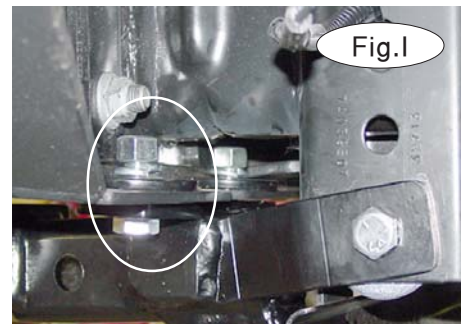
ROADMASTER, Inc. 6110 NE 127th Ave. Vancouver, WA 98682 1-800-669-9690 fax 360-735-9300 www.roadmasterinc.com



1. Start by removing one 8mm (head) bolt from each side, detaching the splash shield from the bumper (Fig.C).
2. Next, remove one plastic fastener on each side, detaching the back of the splash shield from the lower frame support (Fig.D).
3. Beginning with the driver side, place the driver side main receiver brace in position over the existing holes in the bottom and side of the frame rail (Fig.E).



4. Now, place the 1 1/2" x 3" backing plate inside the frame support. Bolt through the main receiver brace, frame support and the backing plate with the 1/2" x 1 1/4" bolt, lock washer and nut (Fig.F).
5. Then, bolt through the side of the main receiver brace and frame support using a 1/2" x 1 1/4" bolt, plate washer, lock washer and nut (Fig.G). *Note:* the plate washer goes on the inside of the frame.
6. Using the two front mounting holes in the main receiver brace as a template, drill a 1/2" hole through the bottom of the bumper (Fig.H)
7. Next, bolt through the main receiver brace and the holes you just drilled through the bottom of the bumper, using the 1/2" x 1 1/4" bolts, clipped plate washers, lock washers and nuts (Fig.I). *Note:* the clipped plate washers go on the inside of the bumper.
8. Tighten all bolts to the torque specifications listed at the end of these instructions.
9. Repeat steps 3 through 8 for the passenger side.



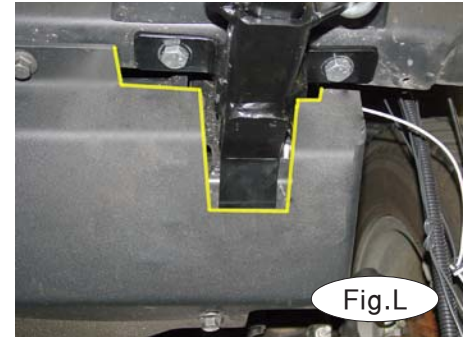
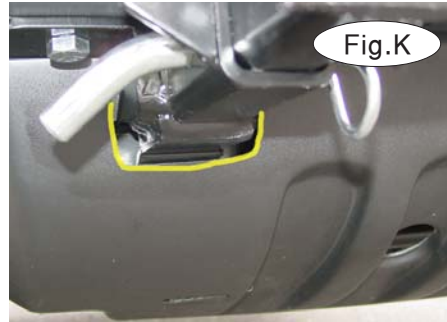
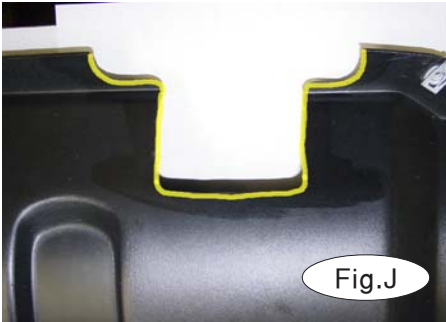


# MOUNTING BRACKET KIT INSTALLATION INSTRUCTIONS

**KIT# 1430-1**

07/22/07  
KB

ROADMASTER, Inc. 6110 NE 127th Ave. Vancouver, WA 98682 1-800-669-9690 fax 360-735-9300 www.roadmasterinc.com



10. Refer to the yellow marker line in Figures J and K for correct trimming of the splash shield on both sides. *Note:* for trimming of the metal splash shield refer to Figure L.
11. Replace the splash shield, reversing steps 1 and 2.
12. Insert the removable front bracket arms into the front receiver braces, and secure them in place with the supplied 5/8" draw pins and spring pins (Fig.M).
13. Attach the 8" safety cables with the cable connectors (Q-Links) to the front of the receiver braces (Fig.M).
14. Attach the ends of the safety cables to the tow vehicle's safety cables and tow bar.
15. Install the tow bar to the mounting bracket according to the manufacturer's instructions.

## BOLT TORQUE REQUIREMENTS

Note: The torque values represented below are intended as general guidelines. Torque requirements for specific applications may vary. Roadmaster does not warrant this information to be accurate for all applications and disclaims all liability for any claims or damages which may result from its use.

### STANDARD BOLTS

Thread Size	Grade	Torque
5/16	5	13 ft./lb.
3/8	5	23 ft./lb.
7/16	5	37 ft./lb.
1/2	5	56 ft./lb.
5/8	5	150 ft./lb.

### METRIC BOLTS

Thread Size	Grade	Plated / Unplated
8mm-1.0	8.8	20 ft./lb. 18 ft./lb.
8mm-1.25	8.8	19 ft./lb. 18 ft./lb.
10mm-1.25	8.8	38 ft./lb. 36 ft./lb.
10mm-1.5	8.8	37 ft./lb. 35 ft./lb.

### METRIC BOLTS

Thread Size	Grade	Plated / Unplated
12mm-1.25	8.8	70 ft./lb. 65 ft./lb.
12mm-1.5	8.8	66 ft./lb. 61 ft./lb.
12mm-1.75	8.8	65 ft./lb. 60 ft./lb.
14mm-2.0	8.8	104 ft./lb. 97 ft./lb.

All illustrations and specifications contained herein are based on the latest information available at the time of publication approval. ROADMASTER, INC. reserves the right to make changes at any time without notice in material, specification and models or to discontinue models.