



# BASEPLATE KIT INSTALLATION INSTRUCTIONS

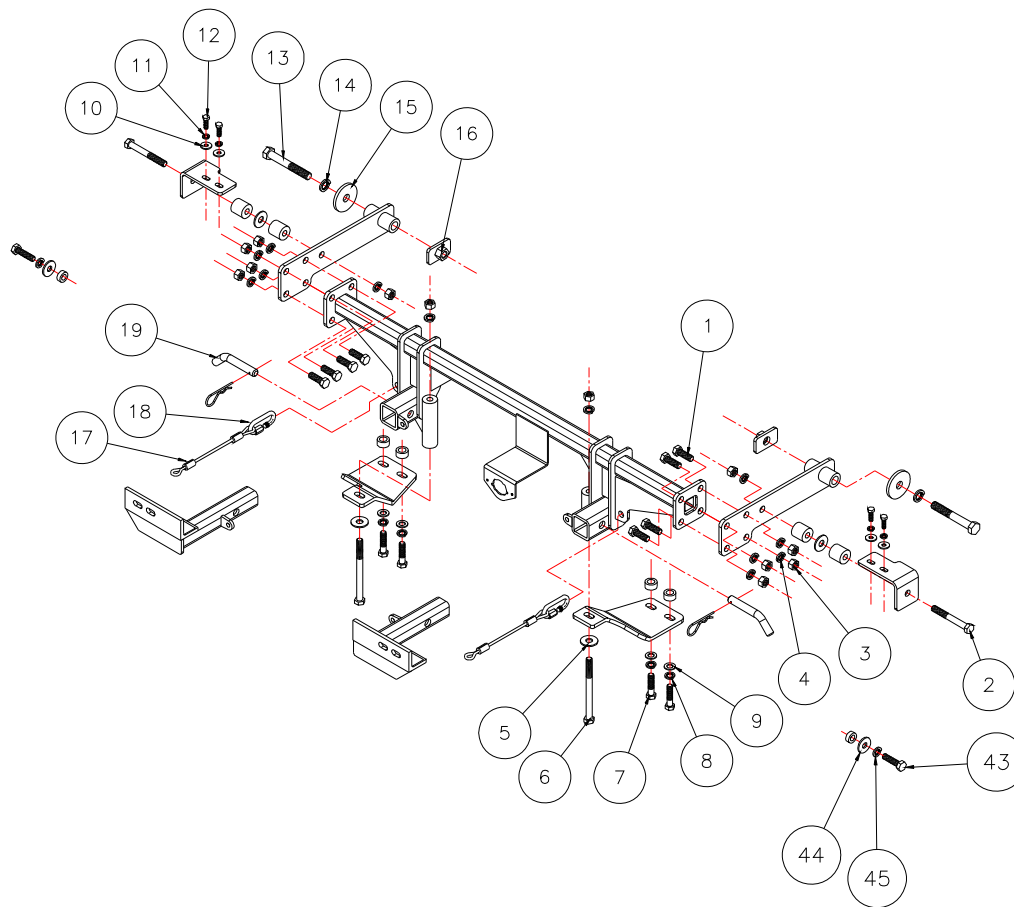
**KIT# 1546-1**

04/18/13

KS

ROADMASTER, Inc. 6110 NE 127th Ave. Vancouver, WA 98682 360-896-0407 fax 360-735-9300 www.roadmasterinc.com

ROADMASTER, INC.



Item	Qty.	Length	Width	Description	Part #
1	8	1 1/2"	1/2"	BOLT	350095-00
2	2	4"	1/2"	BOLT	350105-00
3	12		1/2"	NUT	350258-00
4	12		1/2"	LOCK WASHER	350309-00
5	4		1/2"	FLAT WASHER	350308-00
6	2	6"	1/2"	BOLT	350109-00
7	4	50mm	12mm	12mm x 1.25 x 50 BOLT	357005-00
8	4		12mm	12mm LOCK WASHER	355725-00
9	4		12mm	12mm FLAT WASHER	355720-10
10	4		8mm	8mm FENDER WASHER	355702-00
11	4		8mm	8mm LOCK WASHER	355705-00
12	6	25mm	8mm	8mm x 1.25 x 25 BOLT	356008-00
13	2	4 1/2"	5/8"	BOLT	350159-00
14	2		5/8"	LOCK WASHER	350313-00
15	2		5/8"	PLATE WASHER	350352-00
16	2	2 1/2"	1 1/2"	5/8" NUTTED BACKING PLATE	C-000512
17	2	8"		CABLES	500646-08
18	2			CONNECTORS	200008-00
19	2			DRAW PIN / SPRING PIN	357035-00
43	2	30mm	6mm	M6 x 1.00 x 30 BOLT	355893-00
44	2		6mm	FENDER WASHER	355755-00
45	2		6mm	LOCK WASHER	355761-00



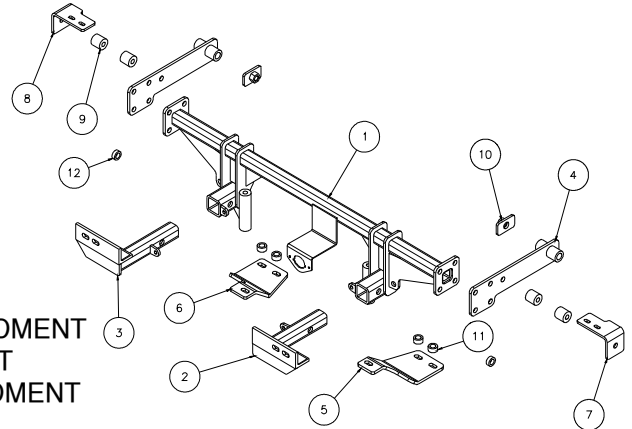
# BASEPLATE KIT INSTALLATION INSTRUCTIONS

**KIT# 1546-1**

04/18/13

KS

ROADMASTER, Inc. 6110 NE 127th Ave. Vancouver, WA 98682 360-896-0407 fax 360-735-9300 www.roadmasterinc.com



Item	Qty.	Part #	Description
1	1	C-000508	MAIN RECEIVER BRACE WELDMENT
2	1	C-000509	DRIVER SIDE ARM WELDMENT
3	1	C-000510	PASSENGER SIDE ARM WELDMENT
4	2	C-000511	REAR BRACE WELDMENT
5	1	B-000350	DRIVER SIDE LOWER MOUNTING PLATE
6	1	B-000351	PASSENGER SIDE LOWER MOUNTING PLATE
7	1	B-000354	DRIVER SIDE FORMED SIDE BRACE
8	1	B-000355	PASSENGER SIDE FORMED SIDE BRACE
9	4	A-000856	1 1/4" TUBE SPACER
10	2	C-000512	BACKING PLATE WELDMENT
11	4	A-000061	1" O.D. x 1/2" TUBE SPACER

**IMPORTANT:** All baseplates **must** be assembled with all the bolts left loose for final adjustment and positioning (before tightening) unless otherwise instructed. All bolts **must** be torqued for proper strength. If more than one bolt is used per fastening point, the diagram may only show one.

- Use flat washers over all slotted holes
- Use lock washers on all fasteners

## WARNING

Failure to follow the below warnings and the installation instructions may result in voiding your warranty, property damage, the loss of your towed vehicle, personal injury or even death.

- We strongly recommend professional installation.
- The installer must read the instructions and use all bolts and parts supplied.
- Use Loctite® Red on all bolts used to secure this baseplate. Torque all bolts to the specifications found at the end of these instructions. Do not over-torque the bolts or failure may occur.
- Every 3,000 miles, the owner must inspect the fasteners for proper torque, according to the bolt torque requirements chart on the last page of these instructions. The owner must also inspect all mounting points for cracks or other signs of fatigue every 3,000 miles.
- The owner must check the vehicle manufacturer's instructions for the proper procedure(s) to prepare the vehicle for towing. Some vehicles must be equipped with a transmission lube pump, an axle disconnect, driveline disconnect or free-wheeling hubs before they can be towed. Failure to properly equip the vehicle will cause severe damage to the transmission.
- Do not weld. This baseplate is designed to be bolted to the vehicle. Welding will void the warranty.
- Do not use this document for custom fabrication, as it may not show all parts or structural components could result in loss of the towed vehicle.
- If the towed vehicle has been in an accident, it must be properly repaired before attaching the baseplate. Do not install the baseplate if any structural frame damage is found.
- If running changes were made by the vehicle manufacturer after this kit was designed, some bolts or other fasteners in the hardware pack may no longer be the correct size. It is the installer's responsibility to verify this kit is securely fastened to the vehicle and fitted with the correct hardware to account for these changes.
- Roadmaster manufactures many styles of baseplates. If your baseplate has removable arms, they must be removed before driving the vehicle, unless the arms can be pinned or padlocked in place. If not secured, the arms could vibrate out.
- Some motorhome chassis have such a tight turning radius that you can damage your motorhome, towed vehicle, tow bar or baseplate while turning sharply. Before getting on the road, test your turning radius in an empty parking lot. Turning too sharply could result in non-warranty damage to towing system, motorhome and/or towed vehicle.
- Do not back up with the towed vehicle attached or non-warranty damage will occur to your towing system, motorhome and/or towed vehicle.
- The safety cables must connect the towing vehicle to the towed vehicle frame to frame, with the cables crossed, with enough slack for sharp turns. Refer to the cable instructions for proper routing. Failure to leave enough slack in the safety cables, or failure to connect the safety cables frame to frame, will result in the loss of the towed vehicle.
- This kit is designed for use with ROADMASTER tow bars and ROADMASTER adapters only. Using this kit with other brands, without an approved ROADMASTER adapter, may result in non-warranty damage or injury.
- Upon final installation, the installer must inspect the baseplate to ensure adequate clearance, particularly around hoses, air conditioner lines, radiators, etc.
- This baseplate is only warranted for the original installation. Installing a used baseplate on another vehicle is not recommended and will void the warranty.



# BASEPLATE KIT INSTALLATION INSTRUCTIONS

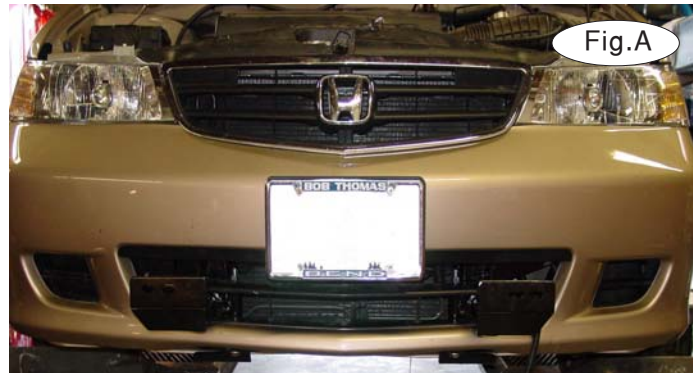
**KIT# 1546-1**

04/18/13

KS

ROADMASTER, Inc. 6110 NE 127th Ave. Vancouver, WA 98682 360-896-0407 fax 360-735-9300 www.roadmasterinc.com

1. This bracket kit is one of our XL series, which is designed to be partly removable. The kit consists of the main receiver brace, side braces, lower braces, front braces and a hardware pack. The main receiver brace bolts to the side braces, which are bolted inside frame tubes on each side. The lower braces connect the main receiver brace to the lower subframe mounts under the radiator cross member. The front braces insert into the receivers on each side (Fig.A). Start by laying the kit out according to the illustration. This will give you a visual idea of how the kit installs and also confirm that the kit components are present and accounted for.



2. **Important:** please use all supplied bolts and parts and read all instructions carefully before beginning this installation. The majority of questions you may have can be answered within the text, and proper installation will ensure safe and secure travel. Now, begin the installation. Starting at the top of the fascia, remove the top grill cover (11 plastic fasteners) and the top mounting bolt (10mm head) for the windshield washer bottle(Fig.B).



3. Move beneath the fascia and remove four plastic fasteners from the middle of the fascia and a screw (10mm head) from the fender well splash panels on each side close to the fender wells (Fig.C,D).

4. Remove one more screw (7mm head) from the fascia fender well junction on each side then pull forward to remove the fascia (Fig.E).

5. Remove the air plenum on the driver's side, three 10mm (head) bolts and set aside.

6. Go to the passenger side and remove three 10mm (head) mounting bolts for the windshield washer bottle. This will provide access to the frame on both sides .

7. Remove the steel bumper core (six 12mm head bolts) and energy absorption foam then set aside.





# BASEPLATE KIT INSTALLATION INSTRUCTIONS

**KIT# 1546-1**

04/18/13

KS

ROADMASTER, Inc. 6110 NE 127th Ave. Vancouver, WA 98682 360-896-0407 fax 360-735-9300 www.roadmasterinc.com

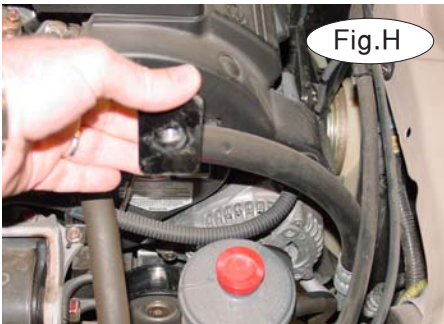


Fig.H

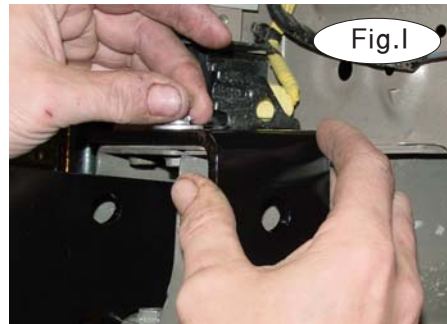


Fig.I

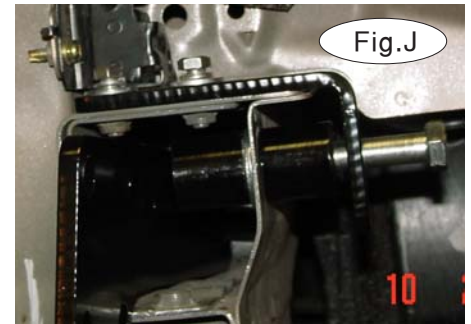


Fig.J

8. Working on one side at a time, insert a side brace into the front of a frame tube and bolt through the large existing rear holes and the brace with a 5/8" x 4 1/2" bolt, lock washer, plate washer and threaded backing plate on the inside of the frame (Fig.F,G,H).

9. Repeat step 8 for the remaining side.

10. Take the flat top brace and bolt in place as illustrated pushed in toward the frame with the two 8mm x 1.25 x 25mm bolts, lock washers and flat washers (Fig.I).

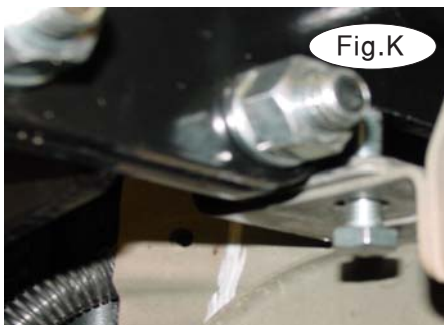


Fig.K



Fig.L



Fig.M

11. Using the flat brace side hole as a drill template, drill through the side of the frame with a 17/32" drill bit. Try to keep it straight and lined up.

12. Bolt through this hole, the top brace, a 1 1/4" pipe spacer, the frame and the side brace with a 1/2" x 4" bolt, lock washer and nut (Fig.J).

13. Repeat the last two steps for the remaining side.

14. Thread a 8mm x 1.25 x 25mm bolt into the bottom of the bumper mount on each side. Use these bolts to level and adjust your side braces.

15. Bolt the main receiver brace to the side braces with four 1/2" x 1 1/2" bolts, lock washers and nuts on each side (Fig.K).

16. Align the braces with the bolts installed in step 15 then torque all mounting bolts to the torque specifications found at the end of these instructions.

17. Replace the windshield washer mounting bolts with 6mm x 1.0 x 30mm bolts and 3/8" spacers on the bottom bolts (Fig.L). This will provide clearance between the washer bottle and the large 5/8" bolt head. Do the same thing for the air plenum on the driver's side.

18. Reverse steps 4 through 6 to refit your fascia, leaving the foam and bumper core off. *Note:* retain the foam and bumper core, as well as any attachment hardware, in case the bracket is ever removed from the vehicle. Some minor grille trimming may be necessary on some models. Once the grille is fitted, mark the lower area where the fascia contacts the lower plate mounts on the receiver brace and cut holes as shown in Figure M. A 1 1/2" hole saw works well. *Note:* there must be metal to metal contact between the receiver brace and the lower mounting plates installed in the next step.



Fig.N



# BASEPLATE KIT INSTALLATION INSTRUCTIONS

**KIT# 1546-1**

04/18/13

KS

ROADMASTER, Inc. 6110 NE 127th Ave. Vancouver, WA 98682 360-896-0407 fax 360-735-9300 www.roadmasterinc.com

19. Remove two lower subframe bolts on each side and bolt the lower braces in place using the supplied 12mm x 1.25 x 50mm bolts and 1/2" spacers. Make certain to use the pipe spacers between the braces and the subframe. This will allow room for the plastic splash shield under the braces (Fig.N).



Fig.O

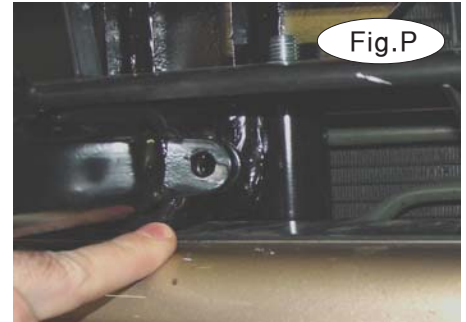


Fig.P

20. Bolt through the front of the lower braces and the main receiver

brace with 1/2" x 6" bolts, lock washers and nuts (Fig.O,P). Torque the bolts to the torque specifications found at the end of these instructions.

21. Install the front braces and pin with 5/8" draw pins and 3/16" spring pins (Fig.Q).

22. Install the safety cables and connectors.



Fig.Q

## BOLT TORQUE REQUIREMENTS

Note: The torque values represented below are intended as general guidelines. Torque requirements for specific applications may vary. Roadmaster does not warrant this information to be accurate for all applications and disclaims all liability for any claims or damages which may result from its use.

### STANDARD BOLTS

Thread Size	Grade	Torque
5/16	5	13 ft./lb.
3/8	5	23 ft./lb.
7/16	5	37 ft./lb.
1/2	5	56 ft./lb.
5/8	5	150 ft./lb.

### METRIC BOLTS

Thread Size	Grade	Plated/Unplated
8mm-1.0	8.8	20 ft./lb. 18 ft./lb.
8mm-1.25	8.8	19 ft./lb. 18 ft./lb.
10mm-1.25	8.8	38 ft./lb. 36 ft./lb.
10mm-1.5	8.8	37 ft./lb. 35 ft./lb.

### METRIC BOLTS

Thread Size	Grade	Plated/Unplated
12mm-1.25	8.8	70 ft./lb. 65 ft./lb.
12mm-1.5	8.8	66 ft./lb. 61 ft./lb.
12mm-1.75	8.8	65 ft./lb. 60 ft./lb.
14mm-2.0	8.8	104 ft./lb. 97 ft./lb.

All illustrations and specifications contained herein are based on the latest information available at the time of publication approval. ROADMASTER, INC. reserves the right to make changes at any time without notice in material, specification and models or to discontinue models.