

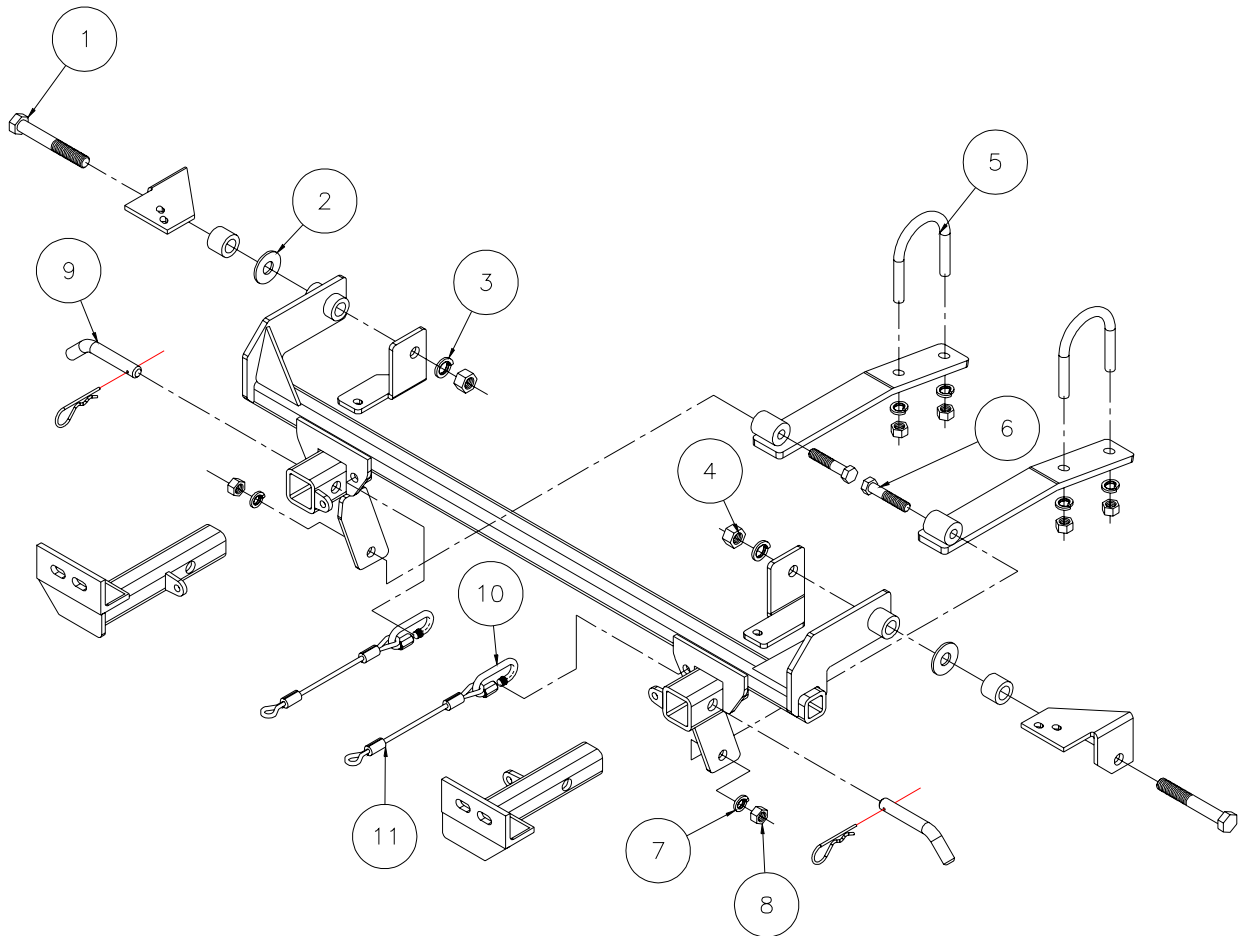


MOUNTING BRACKET KIT INSTALLATION INSTRUCTIONS

KIT NO. 1549-1

10/30/03

ROADMASTER, Inc. 5602 N.E. Skyport Way Portland, OR 97218 1-800-669-9690 Fax 1-503-288-8900 www.roadmasterinc.com



Item	Qty	Length	Width	Hardware	Part No.
1	2	4 1/2"	5/8"	BOLT	350159-00
2	2		5/8"	FLAT WASHER	350312-00
3	2		5/8"	LOCK WASHER	350313-00
4	2		5/8"	NUT	350262-00
5	2			1/2" X 2 3/4" X 3 7/8" U-BOLT	375302-00
6	2	2 1/2"	1/2"	BOLT	350101-00
7	6		1/2"	LOCK WASHERS	350309-00
8	6		1/2"	NUT	350258-00
9	2			DRAW PIN / SPRING PIN	357035-00
10	2			CONNECTORS	200008-00
11	2	10"		SAFETY CABLES	357035-00



MOUNTING BRACKET KIT INSTALLATION INSTRUCTIONS

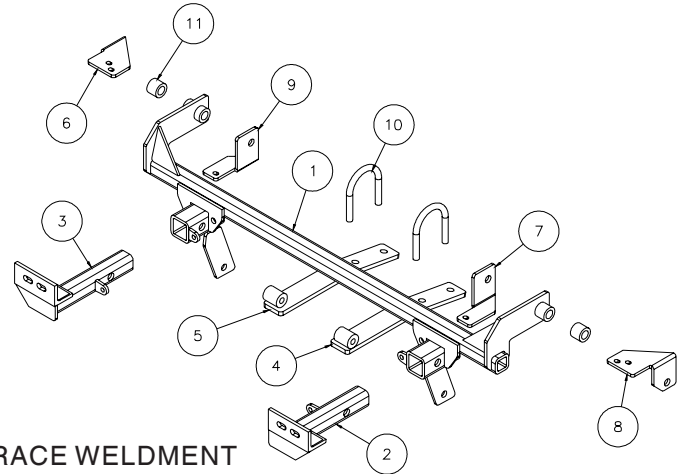
KIT NO. 1549-1

10/30/03

ROADMASTER, Inc. 5602 N.E. Skyport Way Portland, OR 97218 1-800-669-9690 Fax 1-503-288-8900 www.roadmasterinc.com

IMPORTANT: All brackets **must** be assembled with all the bolts left loose for final adjustment & positioning (before tightening) unless otherwise instructed. All bolts **must** be torqued for proper strength. If more than one bolt is used per fastening point, the diagram may only show one.

- Use flat washers over all slotted holes
- Use lock washers on all fasteners



Item	Qty	Name	Assemblies
1	1	C-000589 ...	MAIN RECEIVER BRACE WELDMENT
2	1	C-000590 ...	DRIVER SIDE ARM WELDMENT
3	1	C-000591 ...	PASSENGER SIDE ARM WELDMENT
4	1	C-000592 ...	DRIVER SIDE REAR BRACE WELDMENT
5	1	C-000593 ...	PASSENGER SIDE REAR BRACE WELDMENT
6	1	B-000416 ...	PASSENGER SIDE UPPER BACKING PLATE
7	1	B-000417 ...	DRIVER SIDE LOWER BACKING PLATE
8	1	B-000418 ...	DRIVER SIDE UPPER BACKING PLATE
9	1	B-000419 ...	PASSENGER SIDE LOWER BACKING PLATE
10	2	357302-00 .	U-BOLT
11	2	A-000943 ...	1" SPACER TUBE

ROADMASTER Limited Warranty, including One-Year Conditional Warranty Text and Product Registration Card, in Carton.

WARNING

- Do not use this document for custom fabrication as it may not show all parts or structural components.
- ROADMASTER will not be responsible for any damage or injury resulting from any modification or alteration.
- The owner must inspect all mounts and brackets before each use for cracks or other signs of fatigue. Also, inspect the fasteners for proper torque, according to the torque chart.
- The owner must check the manufacturer's instructions for the proper procedure(s) to prepare the vehicle for towing. Some vehicles must be equipped with a transmission lube pump, an axle disconnect, driveline disconnect or free-wheeling hubs before they can be towed. Failure to properly equip the vehicle will cause severe damage to the transmission.
- The installer must read the instructions and use all bolts and parts supplied.
- If the towed vehicle has been in an accident, it must be properly repaired before attaching the brackets. Do not install the brackets if any structural frame damage is found. Failure to repair the damage may result in loss of your towed vehicle.
- Some motorhome chassis have such a tight turning radius that you can damage your motorhome, towed vehicle or tow bar while

turning sharply. Before getting on the road, test your turning radius in an empty parking lot. Damage that results from turning too sharply is not covered by warranty.

- The driver must not back up the motorhome with the towed vehicle attached or non-warranty damage will occur to your towing system or towed vehicle.
- The safety cables must connect the towing vehicle to the towed vehicle frame to frame, with the cables crossed. Refer to the cable instructions for proper routing.
- Make sure there is enough slack in the safety cables at the motorhome to allow for sharp turns.
- Use caution when handling the tow bar — if your hands, fingers or any part of your body are caught between moving components, they can be pinched, cut or otherwise injured.
- This bracket is designed for use with ROADMASTER tow bars and ROADMASTER adaptors. Using this bracket with other brands, without an approved ROADMASTER adaptor, may result in non-warranty damage or injury.
- Important! This bracket is only warranted for the original installation. Installing a used bracket on another vehicle is not recommended and will void the warranty.
- Upon final installation, the installer must inspect the bracket to ensure adequate clearance, particularly around hoses, AC lines, radiators, etc., or non-warranty damage will result.



WARNING

Failure to follow these instructions can result in property damage, personal injury or even death.

ROADMASTER, INC.



MOUNTING BRACKET KIT INSTALLATION INSTRUCTIONS

KIT NO. 1549-1

10/30/03

ROADMASTER, Inc. 5602 N.E. Skyport Way Portland, OR 97218 1-800-669-9690 Fax 1-503-288-8900 www.roadmasterinc.com

This bracket kit is one of our XL series, (FIG.A) which is designed to be partly removable. The kit consists of the main receiver brace, two front arm braces, two lower braces and a hardware pack. The main receiver brace mounts behind the front bumper fascia to the inside of the frame (Fig.A). The lower braces attach to the front of the radiator support on each side. The front arm braces insert into the receivers on each side. Start by laying the kit out according to the illustration. This will give you a visual idea of how the kit installs and also confirm that all the components are present and accounted for.



1. Start by removing six plastic fasteners in the top of the front bumper fascia (FIG.B).
2. Remove one (8mm head) Phillips screw (Fig.C) and top fastener (10mm head) in each fender well (FIG.D).
3. Remove the splash panel fasteners (two Phillips screws) (Fig.E) and plastic fasteners underneath the fascia (Fig.F).
4. Pull the fascia out on each side then forward to remove (Fig.G) and set aside.





MOUNTING BRACKET KIT INSTALLATION INSTRUCTIONS

KIT NO. 1549-1

10/30/03

ROADMASTER, Inc. 5602 N.E. Skyport Way Portland, OR 97218 1-800-669-9690 Fax 1-503-288-8900 www.roadmasterinc.com



Fig.H



Fig.I



Fig.J



Fig.K



Fig.L



Fig.M

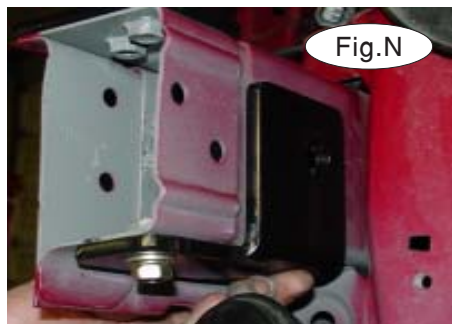


Fig.N

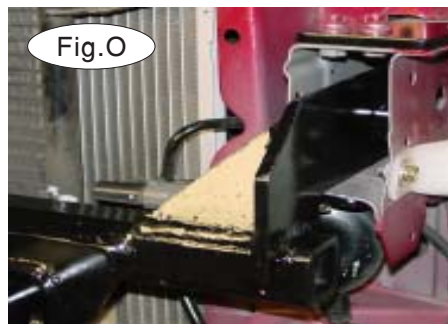


Fig.O



Fig.P

5. Remove the headlights (four 10mm Head) bolts per headlight (FIG.H,I,J).

6. Remove the bumper core (two 12mm head bolts on each side (FIG.K,L).
Note: The main receiver brace will replace the steel bumper core and foam.

7. Fit the top brace on the front of the frame on each side using the stock bumper core mounting bolts (FIG.M).

8. Fit the lower brace to the bottom of the frame on each side and bolt in place with a stock bumper core bolts (Fig.N).

9. Find the 5/8" x 4 1/2" bolts and 1" spacers. Insert the bolts through the top braces on each side with a 1" spacer between the frame and side brace as shown in (Fig.P). Leave the bolts inserted with the ends of the bolts flush with the inside of the frame wall then install the receiver brace in the front of the frame on each side (Fig.O).

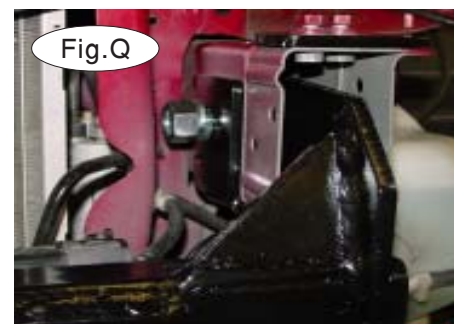


Fig.Q



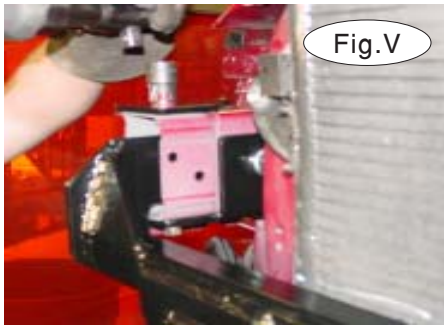
MOUNTING BRACKET KIT INSTALLATION INSTRUCTIONS

KIT NO. 1549-1

10/30/03

ROADMASTER, Inc. 5602 N.E. Skyport Way Portland, OR 97218 1-800-669-9690 Fax 1-503-288-8900 www.roadmasterinc.com

R
O
A
D
M
A
S
T
E
R
,
I
N
C.



10. Insert a 5/8" flat washer inside the frame on each side then bolt through with the 5/8" x 4 1/2" bolt, lock washer and nut (Fig.Q,R).
11. Remove the lower center gravel guard to gain access for the next step (Fig.S).
12. Install the lower braces on the tubular frame cross member as shown with the included U-bolts, lock washers and nuts. Bolt through the front of the lower braces and the main receiver brace with 1/2" x 2 1/2" bolts, lock washers and nuts (FIG.T,U).
13. Align the receiver brace and torque all mounting bolts to the torque specifications below (Fig.V,W).
14. Replace the headlights removed in step 5.
15. Trim the lower gravel guard to fit over the lower braces as shown then reinstall (Fig.Z).
16. Remount the bumper fascia and mark where the lower braces contact the fascia (Fig.Y) and the upper area of the grille opening that will be trimmed to fit (Fig.X) then remove and trim .



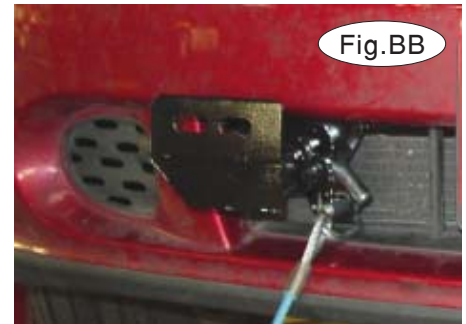
MOUNTING BRACKET KIT INSTALLATION INSTRUCTIONS

KIT NO. 1549-1

10/30/03

ROADMASTER, Inc. 5602 N.E. Skyport Way Portland, OR 97218 1-800-669-9690 Fax 1-503-288-8900 www.roadmasterinc.com

17. Reinstall the bumper fascia with out the bumper core and shock absorption foam reversing steps 1 and 2. The receiver brace assembly will replace these components (Fig.AA).
18. Insert the front braces into the receiver tubes and pin with 5/8" draw pins and spring pins (FIG.BB).
19. Install the tow bar according to the manufacturer's instructions and torque all mounting bolts to the specifications below.
20. Attach the ends of the safety cables to front holes on each side of the RECEIVER BRACE with the included cable connectors. Connect the other end to the TOW VEHICLES safety cables and tow bar.



BOLT TORQUE REQUIREMENTS

Note: The torque values represented below are intended as general guidelines. Torque requirements for specific applications may vary. Roadmaster does not warrant this information to be accurate for all applications and disclaims all liability for any claims or damages which may result from its use.

STANDARD BOLTS			METRIC BOLTS			METRIC BOLTS		
Thread Size	Grade	Torque	Thread Size	Grade	Plated / Unplated	Thread Size	Grade	Plated / Unplated
5/16	5	13 ft./lb.	8mm-1.0	8.8	20 ft./lb. 18 ft./lb.	12mm-1.25	8.8	70 ft./lb. 65 ft./lb.
3/8	5	23 ft./lb.	8mm-1.25	8.8	19 ft./lb. 18 ft./lb.	12mm-1.5	8.8	66 ft./lb. 61 ft./lb.
7/16	5	37 ft./lb.	10mm-1.25	8.8	38 ft./lb. 36 ft./lb.	12mm-1.75	8.8	65 ft./lb. 60 ft./lb.
1/2	5	56 ft./lb.	10mm-1.5	8.8	37 ft./lb. 35 ft./lb.	14mm-2.0	8.8	104 ft./lb. 97 ft./lb.
5/8	5	150 ft./lb.						

All illustrations and specifications contained herein are based on the latest information available at the time of publication approval. ROADMASTER, INC. reserves the right to make changes at any time without notice in material, specification and models or to discontinue models.