

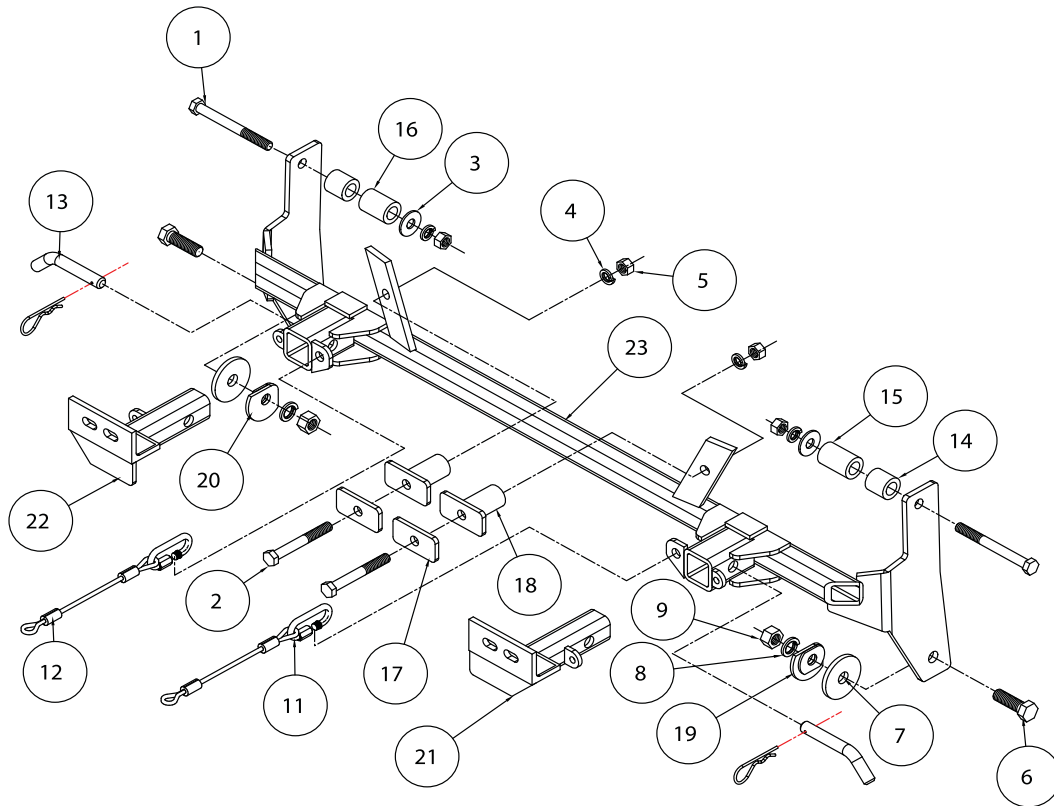


BASEPLATE KIT INSTALLATION INSTRUCTIONS

KIT# 1617-1

02/04/08
KS

ROADMASTER, Inc. 6110 NE 127th Ave. Vancouver, WA 98682 1-800-669-9690 fax 360-735-9300 www.roadmasterinc.com



ITEM	QTY	NAME	MATERIAL
1	2	1/2" x 5" BOLT	350107-00
2	2	1/2" x 4" BOLT	350105-00
3	2	1/2" FLAT WASHER	350308-20
4	4	1/2" LOCK WASHER	350309-00
5	4	1/2" NUT	350258-00
6	2	5/8" x 2" CAPSCREW	350150-00
7	2	5/8" PLATE WASHER	350352-00
8	2	5/8" LOCK WASHER	350313-00
9	2	5/8" NUT	350262-00
11	2	QUICK LINK	200008-00
12	2	CABLES 8"	500646-08
13	2	DRAW PIN W/ CLIP	357035-00
14	2	1 1/4" O.D. x 1 1/4" x .250 WALL TUBE	A-000964
15	1	1 1/4" O.D. x 2" x .250 WALL TUBE	A-001462
16	1	1 1/4" O.D. x 1 3/4" x .250 WALL TUBE	A-001461
17	2	1/4" x 1 1/2" x 3" BACKING PLATE	A-000185
18	2	BACKING PLATE W/ SPACER	C-000851
19	1	DRIVER SIDE BACKING PLATE	C-000854
20	1	PASSENGER SIDE BACKING PLATE	C-000855
21	1	DRIVER SIDE ARM	C-000849
22	1	PASSENGER SIDE ARM	C-000850
23	1	MAIN RECEIVER	C-000848



BASEPLATE KIT INSTALLATION INSTRUCTIONS

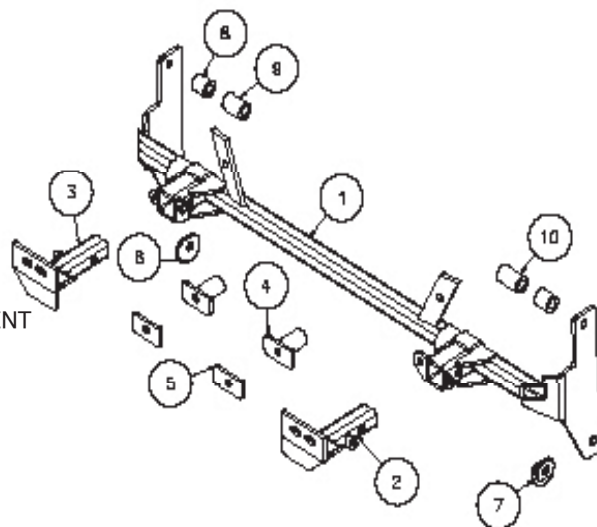
KIT# 1617-1

02/04/08

KS

ROADMASTER, Inc. 6110 NE 127th Ave. Vancouver, WA 98682 1-800-669-9690 fax 360-735-9300 www.roadmasterinc.com

Item	Qty	Part No.	Assembly
1	1	C-000848	MAIN RECEIVER BRACE WELDMENT
2	1	C-000849	DRIVER SIDE ARM BRACE WELDMENT
3	1	C-000850	PASSENGER SIDE ARM BRACE WELDMENT
4	2	C-000851	BACKING PLATE WELDMENT
5	2	A-000185	1/4" x 3" x 1 1/2" BACKING PLATE
6	1	C-000855	PASSENGER SIDE BACKING PLATE WELDMENT
7	1	C-000854	DRIVER SIDE BACKING PLATE WELDMENT
8	2	A-000964	1 1/4" O.D. x 1 1/4" x .219 WALL TUBE
9	1	A-001461	1 1/4" O.D. x 1 3/4" x .219 WALL TUBE
10	1	A-001462	1 1/4" O.D. x 2" x .219 WALL TUBE



IMPORTANT: All baseplates **must** be assembled with all the bolts left loose for final adjustment and positioning (before tightening) unless otherwise instructed. All bolts **must** be torqued for proper strength. If more than one bolt is used per fastening point, the diagram may only show one. Use flat washers over all slotted holes and lock washers on all fasteners.

WARNING

Failure to heed these warnings or follow the installation instructions may result in a voided warranty, loss of towed vehicle, personal injury or death.

- Do not weld or modify this baseplate or its components. Welding or modification will void the warranty.
- Do not use this document as a basis to design/fabricate a baseplate, as it may not show all parts or structural components.
- We strongly recommend professional installation.
- If the towed vehicle has been in an accident, it must be properly repaired before attaching the baseplate. Do not install the baseplate if any structural frame damage is found.
- The installer must use all bolts and parts supplied. If running changes were made by the vehicle manufacturer after this kit was designed, some bolts or other fasteners may no longer be the correct size. It is the installer's responsibility to verify this kit is securely fastened to the vehicle.
- Use Loctite® Red on all bolts used to secure this baseplate. Torque all bolts to the specifications found at the end of these instructions. Do not over-torque the bolts or failure may occur.
- The installer must inspect the baseplate to ensure adequate clearance, particularly around hoses, air conditioner lines, radiators, etc. or non-warranty failure may result.
- Roadmaster manufactures many styles of baseplates. If your baseplate has removable arms, they must be removed before driving the vehicle, unless the arms can be pinned or padlocked in place. If not secured, the arms could vibrate out.
- Some motorhome chassis have such a tight turning radius that you can damage your motorhome, towed vehicle, tow bar or baseplate while turning sharply. Before getting on the road, test your turning radius in an empty parking lot. Turning too sharply could result in non-warranty damage to your towing system, motorhome and/or towed vehicle.
- Do not back up with the towed vehicle attached or non-warranty damage will occur to your towing system or vehicles.
- The safety cables must connect the towing vehicle to the towed vehicle frame to frame, with the cables crossed, with enough slack for sharp turns. See cable instructions for proper routing. Failure to do so will result in non-warranty damage and/or the loss of the towed vehicle.
- This kit is designed for use with ROADMASTER tow bars and ROADMASTER adapters only. Using this kit with other brands, without an approved ROADMASTER adapter, may result in non-warranty damage or injury.
- Receiver extensions and out-of-level towing situations of 3 inches or more. This can cause the system to swing much higher and lower, causing excessive strain on the tow bar, baseplate and frame. That can cause the towing system to fail, causing property damage, personal injury or even death. If you must use a receiver extension or drop hitch to tow, it will reduce your receiver's weight capacity by 1/3 to avoid damaging your system. Never use more than one extension and/or drop hitch, as this will void your warranty.
- Every 3,000 miles, the owner must inspect all mounting points for cracks or fatigue, and check the fasteners for proper torque, according to the bolt torque requirements chart on the last page of these instructions.
- The owner must follow the vehicle manufacturer's instructions to prepare the vehicle for towing. Failure to do so may cause severe damage to the vehicle.
- This baseplate is only warranted for the original installation. Installing a used baseplate on another vehicle is not recommended and will void the warranty.



BASEPLATE KIT INSTALLATION INSTRUCTIONS

KIT# 1617-1

02/04/08
KS

ROADMASTER, Inc. 6110 NE 127th Ave. Vancouver, WA 98682 1-800-669-9690 fax 360-735-9300 www.roadmasterinc.com

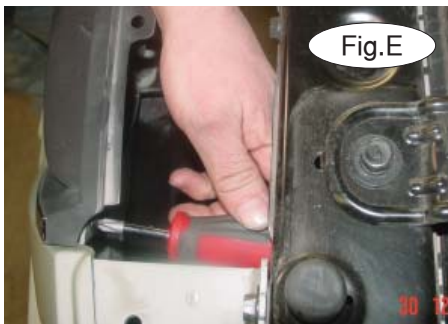
This bracket kit is one of our XL series, which is designed to be partly removable. The kit consists of the main receiver brace, front braces, backing plate weldments and a hardware pack. The main receiver brace mounts to the front frame and bumper core on each side. The front braces insert into the receivers on each side and are pinned in place with draw pins. Start by laying the kit out according to the illustration. This will give you a visual idea of how the kit installs and also confirm that the kit components are present and accounted for (Fig.A).



1. **Important: please use all supplied bolts and parts and read all instructions carefully before beginning this installation. The majority of questions you may have can be answered within the text, and proper installation will ensure safe and secure travel.** Now, begin the installation by opening the hood and removing ten plastic fasteners in the grille cover (Fig.B). Remove two more plastic fasteners in the battery cover (Fig.C), then remove the grille cover (Fig.D).



2. Working behind the grille, remove two phillips screws and set grille aside (Fig.E).
3. Remove the headlights on each side (10mm head) bolts (Fig.F,G) and set aside.



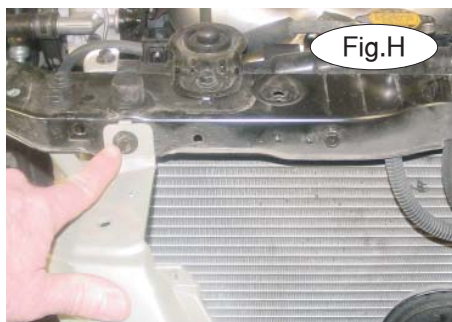


BASEPLATE KIT INSTALLATION INSTRUCTIONS

KIT# 1617-1

02/04/08
KS

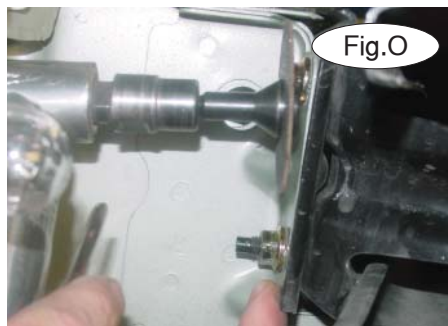
ROADMASTER, Inc. 6110 NE 127th Ave. Vancouver, WA 98682 1-800-669-9690 fax 360-735-9300 www.roadmasterinc.com



4. Remove two bolts (10mm head) from the top front of the fascia (Fig.H).
5. Remove a 10mm (head) bolt from the fascia, fender junction on each side (Fig.I), then remove four plastic fasteners (Phillips) from the top of the bumper core (Fig.J).



6. Now move to the lower grille area and remove two more plastic fasteners in the bottom of the bumper core (Fig.K), then to the bottom sides of the fascia to remove two more plastic fasteners (Fig.L).
7. Remove more fasteners in from the splash panels on each side (Fig.M), then pull forward disconnect the marker lights and set aside (Fig.N).



8. Using either a cut off wheel or saw, shorten the top bumper core retaining stud on each side. Cut just above the nut as shown in (Fig.O).
9. Now remove the top bumper core bolts (12mm head) on each side (Fig.P) then the two side nuts (12mm) on each side (Fig.Q).





BASEPLATE KIT INSTALLATION INSTRUCTIONS

KIT# 1617-1

02/04/08
KS

ROADMASTER, Inc. 6110 NE 127th Ave. Vancouver, WA 98682 1-800-669-9690 fax 360-735-9300 www.roadmasterinc.com



Fig.R



Fig.S

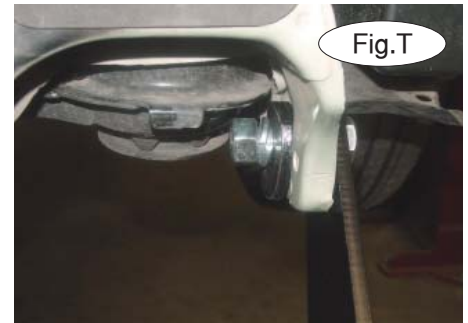


Fig.T

10. Either remove the radiator air deflectors (two 10mm head bolts/side) or cut to clear main receiver brace cross bar (Fig.R).

11. Hold the main receiver brace in position with the lower side plates positioned over the tie down plates on each side (Fig.S) then insert 5/8" plate washers between the brace plates and the tie down plates on each side. Bolt through each side with 5/8" x 2" bolts, backing plates and lock washers on each side (Fig.T).



Fig.U



Fig.V

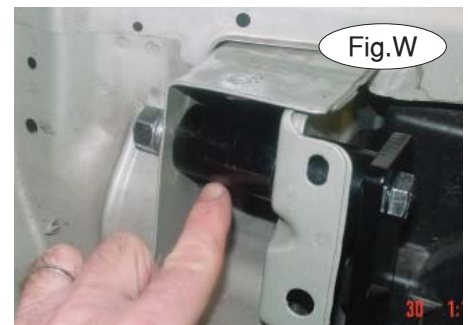


Fig.W

12. Hold the brace in position over the existing holes in each frame rail and bolt through receiver brace plate and 1 1/4" spacer with a 1/2" x 5" bolt, (Fig.U). Put another spacer either a 1 3/4" spacer for the passenger side frame or a 2" spacer for the driver side frame in the frame and finish bolting through with a 1/2" flat washer, lock washer and nut on each side (Fig.W).

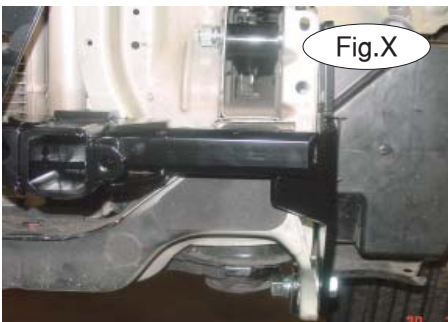


Fig.X



Fig.Y



Fig.Z

13. Remount the bumper core reversing step 10 (Fig.X).

14. Install the backing plate weldments inside the bumper core as shown over the existing holes in the bumper core (Fig.Z) then bolt through the bumper core with 1/2" x 4" bolts, 1/4" x 1 1/2" x 3" backing plates, spacer plate weldments, lock washers and nuts (Fig.AA).



BASEPLATE KIT INSTALLATION INSTRUCTIONS

KIT# 1617-1

02/04/08
KS

ROADMASTER, Inc. 6110 NE 127th Ave. Vancouver, WA 98682 1-800-669-9690 fax 360-735-9300 www.roadmasterinc.com



Fig.AA



Fig.BB



Fig.CC

15. Torque all bolts to the specifications below (Fig.BB).
16. Hollow the bumper absorption foam to fit over the upper brace bolts (Fig.CC).



Fig.DD



Fig.EE



Fig.FF

17. Replace the fascia reversing steps 2 through 8.
18. Install the front arm braces in the receivers and secure with 5/8" draw pins and 3/16" spring pins (Fig.DD).
19. Connect the 8" safety cables to the front of the receivers with the provided cable connectors (Fig.EE,FF) then connect the other end to the tow vehicle's safety cables and the tow bar.
20. Install the tow bar according to the manufacturer's instructions then torque all bolts to the specifications below.

BOLT TORQUE REQUIREMENTS

Note: The torque values represented below are intended as general guidelines. Torque requirements for specific applications may vary. Roadmaster does not warrant this information to be accurate for all applications and disclaims all liability for any claims or damages which may result from its use.

STANDARD BOLTS

Thread Size	Grade	Torque
5/16.....	5.....	13 ft./lb.
3/8.....	5.....	23 ft./lb.
7/16.....	5.....	37 ft./lb.
1/2.....	5.....	56 ft./lb.
5/8.....	5.....	150 ft./lb.

METRIC BOLTS

Thread Size	Grade	Plated / Unplated
8mm-1.0	8.8	20 ft./lb. 18 ft./lb.
8mm-1.25	8.8	19 ft./lb. 18 ft./lb.
10mm-1.25	8.8	38 ft./lb. 36 ft./lb.
10mm-1.5	8.8	37 ft./lb. 35 ft./lb.

METRIC BOLTS

Thread Size	Grade	Plated / Unplated
12mm-1.25	8.8	70 ft./lb. 65 ft./lb.
12mm-1.5	8.8	66 ft./lb. 61 ft./lb.
12mm-1.75	8.8	65 ft./lb. 60 ft./lb.
14mm-2.0	8.8	104 ft./lb. 97 ft./lb.

All illustrations and specifications contained herein are based on the latest information available at the time of publication approval.
ROADMASTER, INC. reserves the right to make changes at any time without notice in material, specification and models or to discontinue models.