

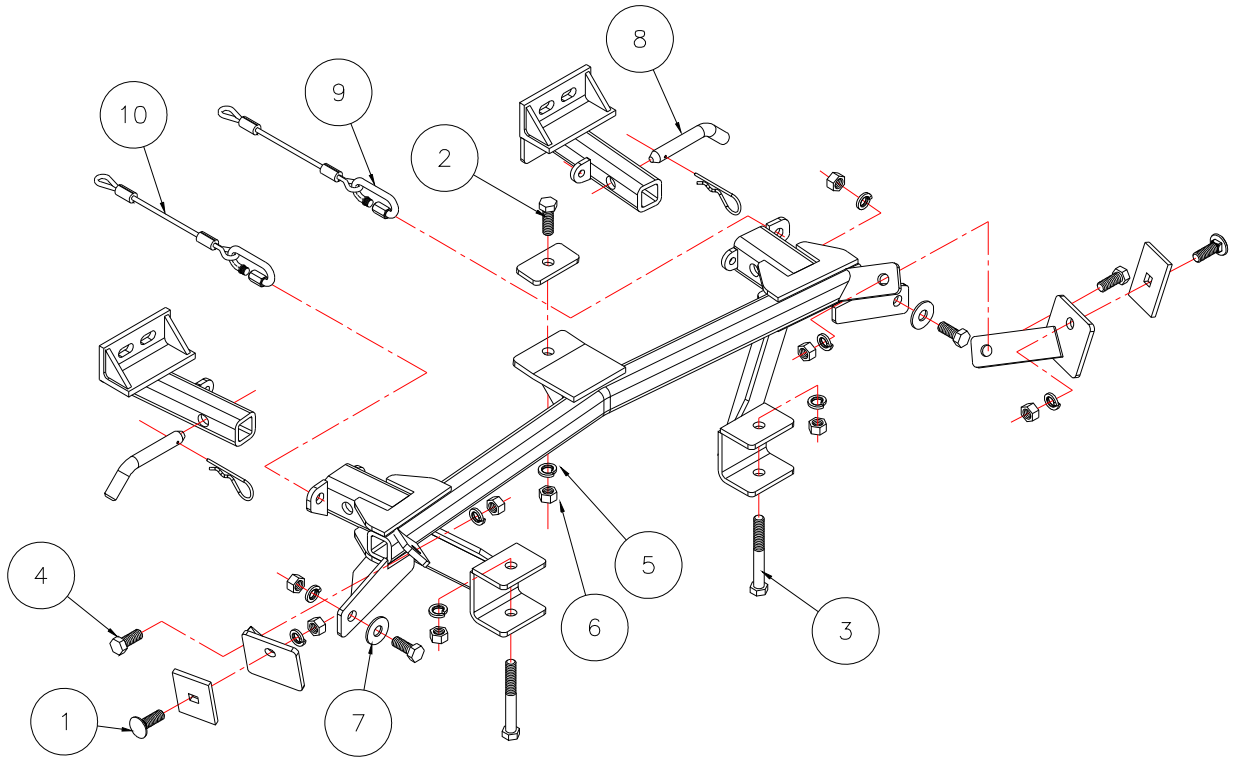


BASEPLATE KIT INSTALLATION INSTRUCTIONS

KIT# 1618-1

1/07/08
KS

ROADMASTER, Inc. 6110 NE 127th Ave. Vancouver, WA 98682 1-800-669-9690 fax 360-735-9300 www.roadmasterinc.com



Item	Qty.	Length	Width	Description	Part #
1	2	1 1/2"	1/2"	1/2" x 1 1/2" CARRIAGE BOLT	350362-00
2	1	1 1/2"	1/2"	1/2" x 1 1/2" BOLT	350095-00
3	2	4"	1/2"	1/2" x 4" BOLT	350105-00
4	4	1 1/4"	1/2"	1/2" x 1 1/4" BOLT	350094-10
5	9		1/2"	LOCKWASHER	350309-00
6	9		1/2"	NUT	350258-00
7	2		1/2"	FLAT WASHER	350308-20
8	2		5/8"	DRAW PINS, SPRING PINS	357035-00
9	2			CABLE CONNECTOR	200008-00
10	2	8"		SAFETY CABLE	500646-08



BASEPLATE KIT INSTALLATION INSTRUCTIONS

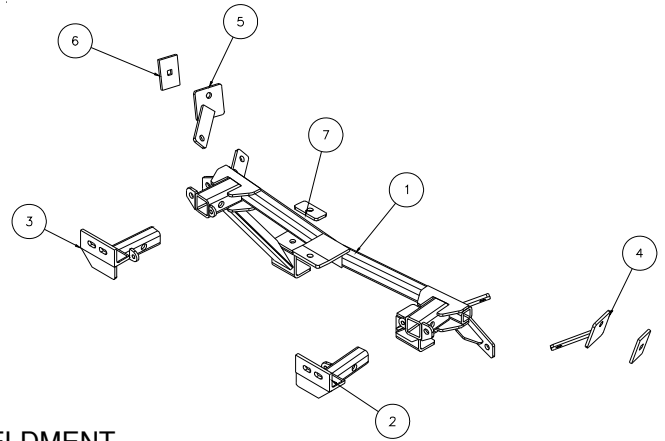
KIT# 1618-1

1/07/08
KS

ROADMASTER, Inc. 6110 NE 127th Ave. Vancouver, WA 98682 1-800-669-9690 fax 360-735-9300 www.roadmasterinc.com

IMPORTANT: All brackets **must** be assembled with all the bolts left loose for final adjustment & positioning (before tightening) unless otherwise instructed. All bolts **must** be torqued for proper strength. If more than one bolt is used per fastening point, the diagram may only show one.

- Use flat washers over all slotted holes
- Use lock washers on all fasteners



Item	Qty.	Part #	Description
1	1	C-001026	MAIN RECEIVER BRACE WELDMENT
2	1	C-001027	DRIVER SIDE ARM TUBE
3	1	C-001028	PASSENGER SIDE ARM TUBE
4	1	C-001029	DRIVER SIDE REAR BRACE WELDMENT
5	1	C-001030	PASSENGER SIDE REAR BRACE WELDMENT
6	2	A-000050	2" x 3" SQ. HOLE BACKING PLATE

IMPORTANT: All baseplates **must** be assembled with all the bolts left loose for final adjustment and positioning (before tightening) unless otherwise instructed. All bolts **must** be torqued for proper strength. If more than one bolt is used per fastening point, the diagram may only show one. Use flat washers over all slotted holes and lock washers on all fasteners.

WARNING

Failure to heed these warnings or follow the installation instructions may result in a voided warranty, loss of towed vehicle, personal injury or death.

- Do not weld or modify this baseplate or its components. Welding or modification will void the warranty.
- Do not use this document as a basis to design/fabricate a baseplate, as it may not show all parts or structural components.
- We strongly recommend professional installation.
- If the towed vehicle has been in an accident, it must be properly repaired before attaching the baseplate. Do not install the baseplate if any structural frame damage is found.
- The installer must use all bolts and parts supplied. If running changes were made by the vehicle manufacturer after this kit was designed, some bolts or other fasteners may no longer be the correct size. It is the installer's responsibility to verify this kit is securely fastened to the vehicle.
- Use Loctite® Red on all bolts used to secure this baseplate. Torque all bolts to the specifications found at the end of these instructions. Do not over-torque the bolts or failure may occur.
- The installer must inspect the baseplate to ensure adequate clearance, particularly around hoses, air conditioner lines, radiators, etc. or non-warranty failure may result.
- Roadmaster manufactures many styles of baseplates. If your baseplate has removable arms, they must be removed before driving the vehicle, unless the arms can be pinned or padlocked in place. If not secured, the arms could vibrate out.
- Some motorhome chassis have such a tight turning radius that you can damage your motorhome, towed vehicle, tow bar or baseplate while turning sharply. Before getting on the road, test your turning radius in an empty parking lot. Turning too sharply could

result in non-warranty damage to your towing system, motorhome and/or towed vehicle.

- Do not back up with the towed vehicle attached or non-warranty damage will occur to your towing system or vehicles.
- The safety cables must connect the towing vehicle to the towed vehicle frame to frame, with the cables crossed, with enough slack for sharp turns. See cable instructions for proper routing. Failure to do so will result in non-warranty damage and/or the loss of the towed vehicle.
- This kit is designed for use with ROADMASTER tow bars and ROADMASTER adapters only. Using this kit with other brands, without an approved ROADMASTER adapter, may result in non-warranty damage or injury.
- Receiver extensions and out-of-level towing situations of 3 inches or more. This can cause the system to swing much higher and lower, causing excessive strain on the tow bar, baseplate and frame. That can cause the towing system to fail, causing property damage, personal injury or even death. If you must use a receiver extension or drop hitch to tow, it will reduce your receiver's weight capacity by 1/3 to avoid damaging your system. Never use more than one extension and/or drop hitch, as this will void your warranty.
- Every 3,000 miles, the owner must inspect all mounting points for cracks or fatigue, and check the fasteners for proper torque, according to the bolt torque requirements chart on the last page of these instructions.
- The owner must follow the vehicle manufacturer's instructions to prepare the vehicle for towing. Failure to do so may cause severe damage to the vehicle.
- This baseplate is only warranted for the original installation. Installing a used baseplate on another vehicle is not recommended and will void the warranty.



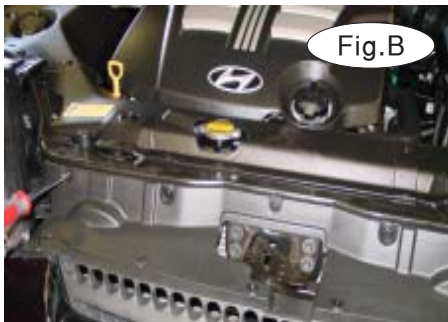
BASEPLATE KIT INSTALLATION INSTRUCTIONS

KIT# 1618-1

1/07/08
KS

ROADMASTER, Inc. 6110 NE 127th Ave. Vancouver, WA 98682 1-800-669-9690 fax 360-735-9300 www.roadmasterinc.com

This is one of our XL bracket series, which allows the visible front portion of the brackets to be easily removed from the front (Fig A). The bracket kit consists of a main receiver brace, front braces and a hardware pack. Before starting the installation, lay out the kit components as illustrated. This will give you a visual idea of how the components work and also confirm that everything is present and accounted for.



1. **Important:** please use all supplied bolts and parts and read all instructions carefully before beginning this installation. The majority of questions you may have can be answered within the text, and proper installation will ensure safe and secure travel. Now, begin the installation. Begin by removing the three plastic fasteners over the radiator cover (Fig.B). Then, remove the two fasteners in the middle and the two on each side (Fig.C). Remove two more fasteners on the each corner of the fascia (Fig.D).



2. Remove three bolts (10mm head) from both of the headlights: one on the inside and two on the top (Fig.E,F). Pull head light out enough to unplug two connector wires from the back and remove head light (Fig.G)

3. Remove the plastic fastener underneath the head light on top of the fascia and the 10mm bolts at the fender fascia junction on each side (Fig.H,I).





BASEPLATE KIT INSTALLATION INSTRUCTIONS

KIT# 1618-1

1/07/08
KS

ROADMASTER, Inc. 6110 NE 127th Ave. Vancouver, WA 98682 1-800-669-9690 fax 360-735-9300 www.roadmasterinc.com



Fig.J



Fig.K



Fig.L

4. There is one 8mm screw and one 10mm screw in each fender well holding on the fascia remove these screws (Fig.J).

5. Remove the fasteners underneath the fascia going into the bumper core on each side (Fig.K), then remove the five 10mm fasteners from the lower splash panel. Pull splash panel down and unplug fog lights (Fig.L,M).



Fig.M



Fig.N



Fig.O

6. Pull the sides of the fascia out and pull forward to remove the fascia (Fig.N,M).

7. Now, remove the bumper core by removing six 12mm bolts, two from the top and four from the sides (Fig.P).

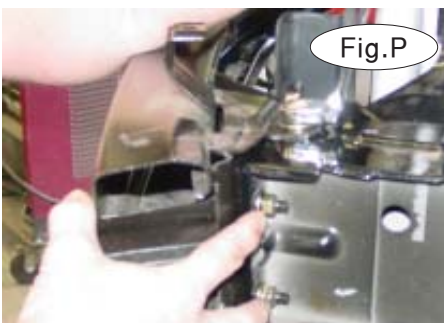


Fig.P



Fig.Q



Fig.R

8. There are radiator air deflectors on each side that will either need to be removed or trimmed as shown in (Fig.Q), in order to allow clearance for the receiver brace. When removing the radiator air deflectors, there is a wiring harness on each side. You will need to pop off the clip and pull it back and out of the way (Fig.R). Place the wiring harness inside the frame.



BASEPLATE KIT INSTALLATION INSTRUCTIONS

KIT# 1618-1

1/07/08
KS

ROADMASTER, Inc. 6110 NE 127th Ave. Vancouver, WA 98682 1-800-669-9690 fax 360-735-9300 www.roadmasterinc.com

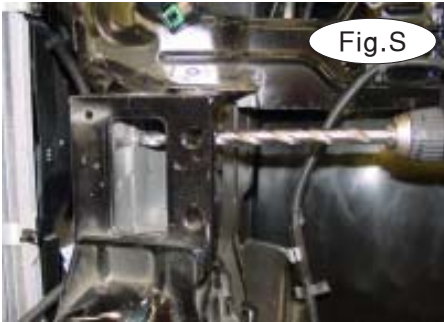


Fig.S



Fig.T



Fig.U

9. Clean the existing hole with a 17/32" drill bit (Fig.S).

10. Insert a 1/2" x 1 1/2" carriage bolt and a 2" x 3" square hole backing plate into the middle of the frame. Bolt through the frame and into the rear brace, lock washer and nut as shown in (Fig.T,U), on both sides.



Fig.V



Fig.W



Fig.X

11. Now remount the bumper core by reversing step 7 (Fig.P).

12. Remove the small plastic cover over the existing hole on the bottom of the radiator core support on each side (Fig.W), and install the receiver brace on the bumper core in front of the radiator core support (Fig.X). Bolt receiver brace to the rear braces on each side with a 1/2" x 1 1/4" bolt, lock washer and nut (Fig.V). Be sure that the brace is mounted snug against bumper core and the radiator core support before drilling.



Fig.Y



Fig.Z

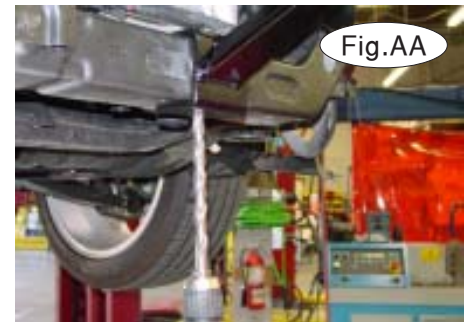


Fig.AA

13. Using the brace as a drill template, drill through the front of the frame use the access holes to insert a 1/4" bolt in the front and a flat washer, lock washer and nut on the back side of the frame as shown in (Fig.Y,Z).

14. Now drill through both sides of the lower radiator core support using the brace as a template and bolt into place with a 1/2" x 4" bolt, lock washer and nut as shown in (Fig.AA,BB).



Fig.BB



BASEPLATE KIT INSTALLATION INSTRUCTIONS

KIT# 1618-1

1/07/08
KS

ROADMASTER, Inc. 6110 NE 127th Ave. Vancouver, WA 98682 1-800-669-9690 fax 360-735-9300 www.roadmasterinc.com



Fig.CC



Fig.DD



Fig.EE

15. Using the receiver brace as a template drill through the bottom of the bumper core (Fig.CC). Bolt through the receiver brace into the bumper core using a 1½" bolt, ¼" x 1½" x 3" backing plate, lock washer and nut (Fig.DD).

16. Reinstall fascia, fog lights, splash panel and head lights by reversing steps 1 through 6 (Fig.EE).

17. Insert the front braces into the receivers and pin with 5/8" draw pins and 3/16" spring pins (Fig.FF).

18. Install 8" safety cables on the main receiver brace with the quick links provided (Fig.GG). Attach the other end to the tow vehicle's safety cables and the tow bar.



Fig.FF

19. Mount tow bar according to the tow bar manufacturer's instructions.



Fig.GG

BOLT TORQUE REQUIREMENTS

Note: The torque values represented below are intended as general guidelines. Torque requirements for specific applications may vary. Roadmaster does not warrant this information to be accurate for all applications and disclaims all liability for any claims or damages which may result from its use.

STANDARD BOLTS

Thread Size	Grade	Torque
5/16	5	13 ft./lb.
3/8	5	23 ft./lb.
7/16	5	37 ft./lb.
1/2	5	56 ft./lb.
5/8	5	150 ft./lb.

METRIC BOLTS

Thread Size	Grade	Plated/Unplated
8mm-1.0	8.8	20 ft./lb. 18 ft./lb.
8mm-1.25	8.8	19 ft./lb. 18 ft./lb.
10mm-1.25	8.8	38 ft./lb. 36 ft./lb.
10mm-1.5	8.8	37 ft./lb. 35 ft./lb.

METRIC BOLTS

Thread Size	Grade	Plated/Unplated
12mm-1.25	8.8	70 ft./lb. 65 ft./lb.
12mm-1.5	8.8	66 ft./lb. 61 ft./lb.
12mm-1.75	8.8	65 ft./lb. 60 ft./lb.
14mm-2.0	8.8	104 ft./lb. 97 ft./lb.

All illustrations and specifications contained herein are based on the latest information available at the time of publication approval. ROADMASTER, INC. reserves the right to make changes at any time without notice in material, specification and models or to discontinue models.