



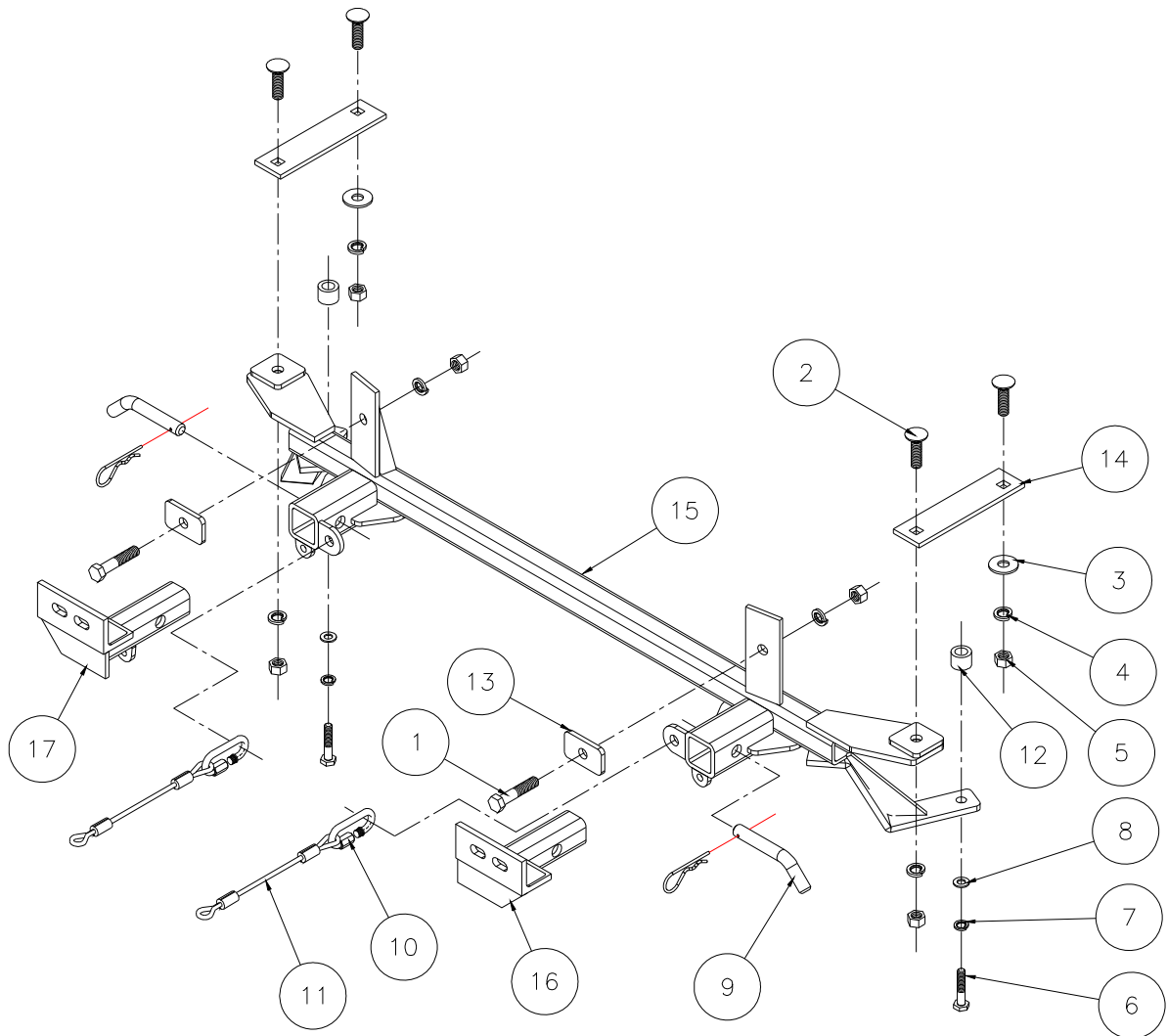
# BASEPLATE KIT INSTALLATION INSTRUCTIONS

**KIT# 1626-1**

09/19/07  
KB

ROADMASTER, Inc. 6110 NE 127th Ave. Vancouver, WA 98682 1-800-669-9690 fax 360-735-9300 www.roadmasterinc.com

ROADMASTER, INC.



ITEM	QTY	NAME	MATERIAL
1	2	1/2" x 2 1/2" BOLT	350099-00
2	4	1/2" x 1 3/4" CARRIAGE BOLT	350363-00
3	2	1/2" FLAT WASHER	350308-00
4	6	1/2" LOCK WASHER	350309-00
5	6	1/2" HEX NUT	350258-00
6	2	10mm x 1.25 x 50mm BOLT	356205-00
7	2	10mm FLAT WASHER	355710-00
8	2	10mm LOCK WASHER	355715-00
9	2	5/8" DRAW PIN W/ CLIP	357035-00
10	2	QUICK LINK	200008-00
11	2	SAFETY CABLE 8"	500646-08
12	2	1" O.D. x 0.188 WALL x 3/4" PIPE SPACER	A-000112
13	2	1/4" X 1 1/2" x 2 1/2" BACKING PLATE	A-000134
14	2	1/4" x 1 3/4" x 7 3/16" BACKING PLATE	A-002474
15	1	MAIN RECEIVER	C-001585
16	1	DRIVER SIDE ARM	C-001586
17	1	PASSENGER SIDE ARM	C-001587



# BASEPLATE KIT INSTALLATION INSTRUCTIONS

**KIT# 1626-1**

09/19/07  
KB

ROADMASTER, Inc. 6110 NE 127th Ave. Vancouver, WA 98682 1-800-669-9690 fax 360-735-9300 www.roadmasterinc.com

This is one of our XL series brackets, which allows the visible front portion of the bracket to be easily removed from the front of the vehicle (Fig.A and Fig.B).

The bracket kit consists of a main receiver brace, two removable front bracket arms and a hardware pack. The main receiver brace mounts to the top and bottom of the frame rails, and the removable front bracket arms install in the main receiver braces.

Before starting the installation, lay out the kit components in order, as they will be used. This will give you a visual idea of how the components work, and will also confirm that everything is present and accounted for.



**IMPORTANT:** All baseplates **must** be assembled with all the bolts left loose for final adjustment and positioning (before tightening) unless otherwise instructed. All bolts **must** be torqued for proper strength. If more than one bolt is used per fastening point, the diagram may only show one. Use flat washers over all slotted holes and lock washers on all fasteners.

## WARNING

Failure to heed these warnings or follow the installation instructions may result in a voided warranty, loss of towed vehicle, personal injury or death.

- Do not weld or modify this baseplate or its components. Welding or modification will void the warranty.
- Do not use this document as a basis to design/fabricate a baseplate, as it may not show all parts or structural components.
- We strongly recommend professional installation.
- If the towed vehicle has been in an accident, it must be properly repaired before attaching the baseplate. Do not install the baseplate if any structural frame damage is found.
- The installer must use all bolts and parts supplied. If running changes were made by the vehicle manufacturer after this kit was designed, some bolts or other fasteners may no longer be the correct size. It is the installer's responsibility to verify this kit is securely fastened to the vehicle.
- Use Loctite® Red on all bolts used to secure this baseplate. Torque all bolts to the specifications found at the end of these instructions. Do not over-torque the bolts or failure may occur.
- The installer must inspect the baseplate to ensure adequate clearance, particularly around hoses, air conditioner lines, radiators, etc. or non-warranty failure may result.
- Roadmaster manufactures many styles of baseplates. If your baseplate has removable arms, they must be removed before driving the vehicle, unless the arms can be pinned or padlocked in place. If not secured, the arms could vibrate out.
- Some motorhome chassis have such a tight turning radius that you can damage your motorhome, towed vehicle, tow bar or baseplate while turning sharply. Before getting on the road, test your turning radius in an empty parking lot. Turning too sharply could result in non-warranty damage to your towing system, motorhome and/or towed vehicle.
- Do not back up with the towed vehicle attached or non-warranty damage will occur to your towing system or vehicles.
- The safety cables must connect the towing vehicle to the towed vehicle frame to frame, with the cables crossed, with enough slack for sharp turns. See cable instructions for proper routing. Failure to do so will result in non-warranty damage and/or the loss of the towed vehicle.
- This kit is designed for use with ROADMASTER tow bars and ROADMASTER adapters only. Using this kit with other brands, without an approved ROADMASTER adapter, may result in non-warranty damage or injury.
- Receiver extensions and out-of-level towing situations of 3 inches or more. This can cause the system to swing much higher and lower, causing excessive strain on the tow bar, baseplate and frame. That can cause the towing system to fail, causing property damage, personal injury or even death. If you must use a receiver extension or drop hitch to tow, it will reduce your receiver's weight capacity by 1/3 to avoid damaging your system. Never use more than one extension and/or drop hitch, as this will void your warranty.
- Every 3,000 miles, the owner must inspect all mounting points for cracks or fatigue, and check the fasteners for proper torque, according to the bolt torque requirements chart on the last page of these instructions.
- The owner must follow the vehicle manufacturer's instructions to prepare the vehicle for towing. Failure to do so may cause severe damage to the vehicle.
- This baseplate is only warranted for the original installation. Installing a used baseplate on another vehicle is not recommended and will void the warranty.



# BASEPLATE KIT INSTALLATION INSTRUCTIONS

**KIT# 1626-1**

09/19/07  
KB

ROADMASTER, Inc. 6110 NE 127th Ave. Vancouver, WA 98682 1-800-669-9690 fax 360-735-9300 www.roadmasterinc.com



1. **Important:** please use all supplied bolts and parts and read all instructions carefully before beginning this installation. The majority of questions you may have can be answered within the text, and proper installation will ensure safe and secure travel. Now, begin the installation. Start by removing 13 plastic fasteners attaching the radiator cover to the fascia and core support (Fig.C).
2. On both sides, remove two 10mm bolts holding the headlight (Fig.D).
3. On both sides, lift up on the rear mounting point of the headlight and pull forward to remove the headlight (Fig.E). *Note:* unplug the three plastic plugs before removing the headlight.



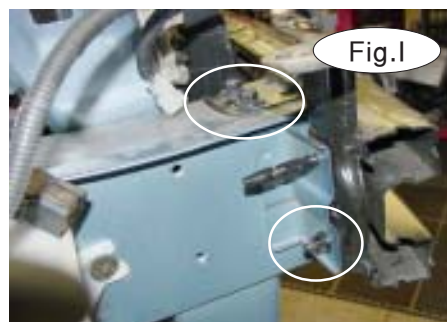
4. On both sides, remove two pop fasteners and one 10mm bolt from the headlight opening (Fig.F).
5. On both sides, remove one 8mm bolt attaching the fascia to the fender (Fig.G).
6. Now, remove 19 plastic fasteners and three 10mm bolts attaching the center splash shield, the side splash panels and the lower fascia to the underside of the car (Fig.H).

7. Disconnect the fog lights (if the vehicle is so equipped).

8. Pull forward on the fascia to remove it.

9. Temporarily remove the bumper core by removing two 12mm (head) bolts and one 12mm (head) nut from each side (Fig.I).

10. Next, trim off the metal tabs at each side of the bottom of the bumper core, until they are flush with the bottom of the bumper core (Fig.J).





# BASEPLATE KIT INSTALLATION INSTRUCTIONS

**KIT# 1626-1**

09/19/07  
KB

ROADMASTER, Inc. 6110 NE 127th Ave. Vancouver, WA 98682 1-800-669-9690 fax 360-735-9300 www.roadmasterinc.com



Fig.K

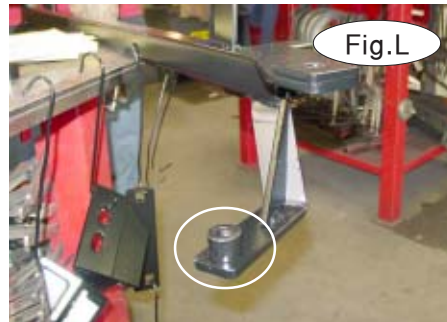


Fig.L

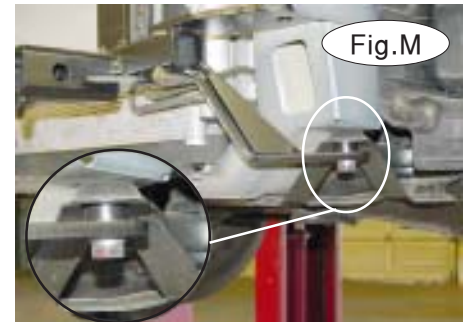


Fig.M

11. On both sides, remove one 14mm bolt attaching the frame support to the bottom of the frame rail (Fig.K)
12. On both sides, position one of the supplied 1" x 3/4" pipe spacers over the lower mounting hole at each end of the main receiver brace (Fig.L).
13. Position the main receiver brace under the frame rails, so that the pipe spacers align to the holes for the bolts you removed in step 11. On both sides, bolt through the main receiver brace, pipe spacer, frame support and into the bottom of the frame rail (Fig.M) with the supplied 10mm x 1.25 x 50mm bolts. Tighten the two bolts to the torque specifications at the bottom of these instructions. Then, check to ensure that the top of the main receiver brace is directly against the bottom of both frame rails.



Fig.N



Fig.O



Fig.P

14. On both sides, use the upper mounting point on the outside of the main receiver brace as a template and drill a 1/2" hole through the bottom of the frame rail (Fig.N).
15. On the driver side only, remove the two 10mm bolts attaching the air box to the side of the frame rail (Fig.O). Then, position the air box off to the side (Fig.P).

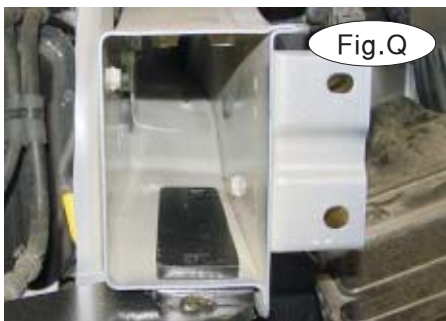


Fig.Q

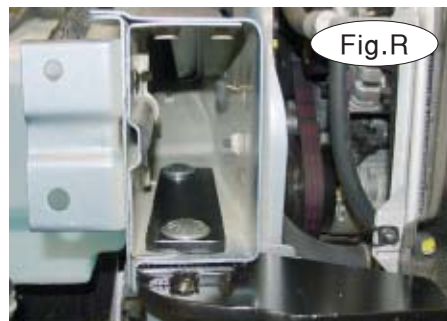


Fig.R

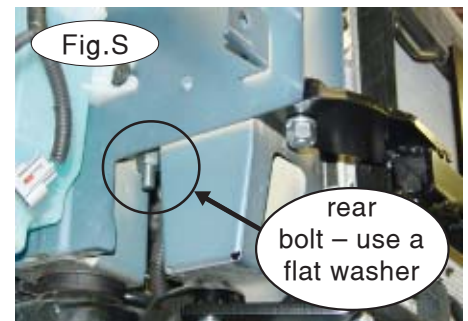


Fig.S

rear  
bolt – use a  
flat washer

16. On both sides, position one of the 1 3/4" x 7" backing plates inside the frame rail so that the holes in the plate align to the existing hole approximately 6" inside the frame rail and to the 1/2" hole you drilled in step 14 (Fig.Q).
17. On both sides, bolt each backing plate to the main receiver brace and to the frame rail – use two of the supplied 1/2" x 1 3/4" carriage bolts, flat washers and lock washers on each side (Fig.R). *Note:* use the flat washers only on the rear bolts (Fig.S).



# BASEPLATE KIT INSTALLATION INSTRUCTIONS

**KIT# 1626-1**

09/19/07  
KB

ROADMASTER, Inc. 6110 NE 127th Ave. Vancouver, WA 98682 1-800-669-9690 fax 360-735-9300 www.roadmasterinc.com

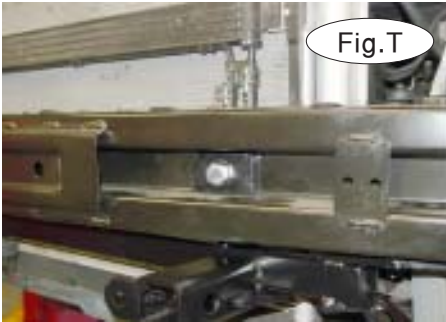


Fig.T



Fig.U

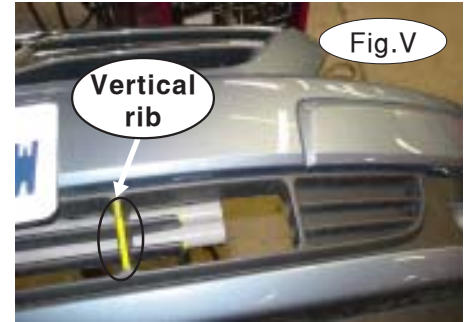


Fig.V

Vertical rib

- 18. Tighten all remaining bolts to the torque specifications at the bottom of these instructions.
- 19. Replace the bumper core (step 9) and the air box (step 15).
- 20. Attach the main receiver brace to the bumper core – on both sides, use one of the supplied 1½" x 2½" backing plates and ½" x 2½" bolts, lock washers and nuts to bolt through the existing hole in the bumper core and the pre-drilled hole at the inside of the main receiver brace (Fig.T, U). *Note:* position the backing plate on the front side of the bumper core.
- 21. Torque the two bolts to the torque specifications at the bottom of these instructions.
- 22. Before reinstalling the fascia, trim it on both sides, so that the removable front bracket arms can extend through the grill. **On the '07-'08 Hyundai Entourage:** mark the two horizontal ribs 2-3/8" back from the vertical rib shown in Figure V, and trim back to the next vertical rib, as shown in Figure V. **On the '06-'07 Kia Sedona:** trim the fascia using the yellow lines in Figure W as a guide.

- 23. Reassemble the splash shields and fascia, reversing steps 1 through 8.
- 24. Insert the removable front bracket arms into the front receiver braces, and secure them in place with the supplied 5/8" draw pins and spring pins (Fig.W).

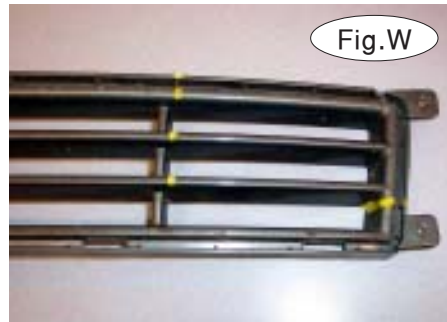


Fig.W



Fig.X

- 25. Attach the 8" safety cables with the cable connectors (Q-Links) to the front of the receiver braces (Fig.X).
- 26. Attach the ends of the 8" safety cables to the tow vehicle's safety cables.
- 27. Install the tow bar to the mounting bracket according to the manufacturer's instructions.

### BOLT TORQUE REQUIREMENTS

Note: The torque values represented below are intended as general guidelines. Torque requirements for specific applications may vary. Roadmaster does not warrant this information to be accurate for all applications and disclaims all liability for any claims or damages which may result from its use.

#### STANDARD BOLTS

Thread Size	Grade	Torque
5/16	5	13 ft./lb.
3/8	5	23 ft./lb.
7/16	5	37 ft./lb.
1/2	5	56 ft./lb.
5/8	5	150 ft./lb.

#### METRIC BOLTS

Thread Size	Grade	Plated / Unplated
8mm-1.0	8.8	20 ft./lb. 18 ft./lb.
8mm-1.25	8.8	19 ft./lb. 18 ft./lb.
10mm-1.25	8.8	38 ft./lb. 36 ft./lb.
10mm-1.5	8.8	37 ft./lb. 35 ft./lb.

#### METRIC BOLTS

Thread Size	Grade	Plated / Unplated
12mm-1.25	8.8	70 ft./lb. 65 ft./lb.
12mm-1.5	8.8	66 ft./lb. 61 ft./lb.
12mm-1.75	8.8	65 ft./lb. 60 ft./lb.
14mm-2.0	8.8	104 ft./lb. 97 ft./lb.

All illustrations and specifications contained herein are based on the latest information available at the time of publication approval. ROADMASTER, INC. reserves the right to make changes at any time without notice in material, specification and models or to discontinue models.