

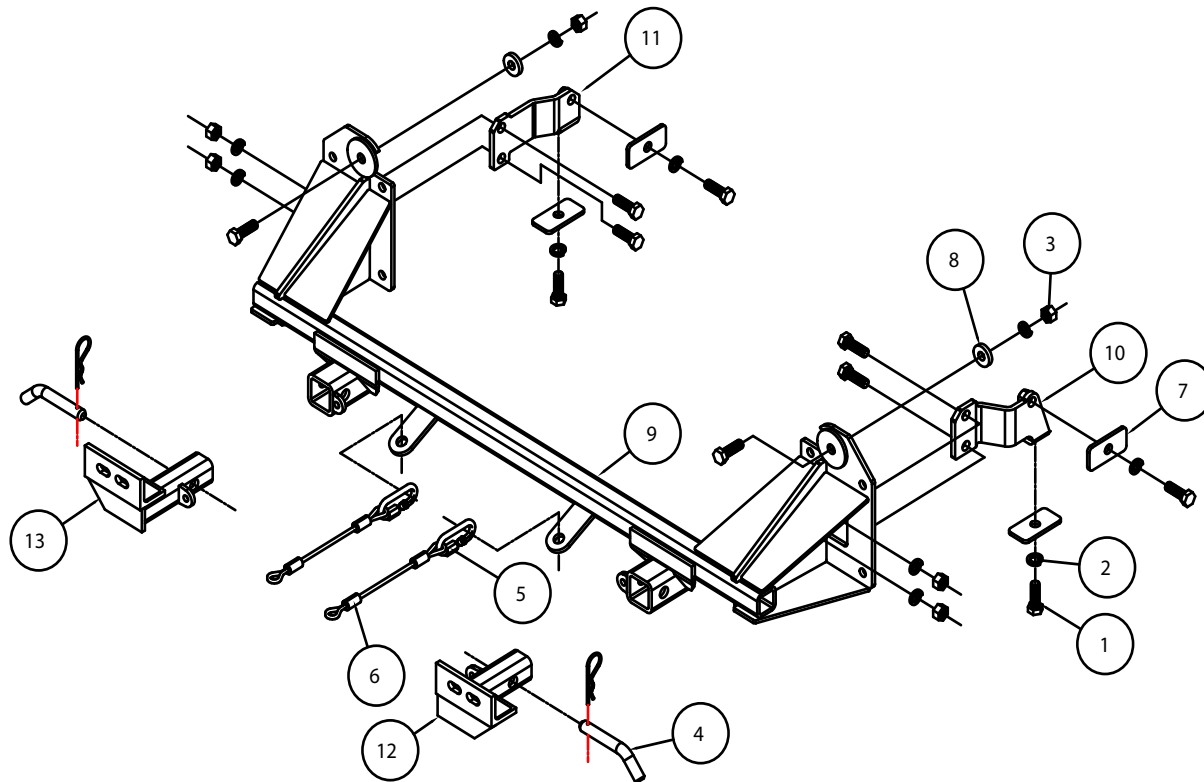


# BASEPLATE KIT INSTALLATION INSTRUCTIONS

**KIT# 1628-1**

11/19/12  
KS

ROADMASTER, Inc. 6110 NE 127th Ave. Vancouver, WA 98682 360-896-0407 fax 360-735-9300 www.roadmasterinc.com



ITEM	QTY	NAME	MATERIAL
1	10	1/2" x 1 1/2" BOLT	350095-00
2	10	1/2" LOCK WASHER	350309-00
3	6	1/2" HEX NUT	350258-00
4	2	DRAW PIN W/ CLIP	357035-00
5	2	QUICK LINK	200008-00
6	2	SAFETY CABLE 10"	650646-10
7	4	3/16" x 1 1/2" x 3" ROUND HOLE BACKING PLATE	A-000185
8	2	1 1/4" O.D. x 1/4" PIPE SPACER	A-000889
9	1	MAIN RECEIVER	C-001994
10	1	DRIVER SIDE BRACE	C-001995
11	1	PASSENGER SIDE BRACE	C-001996
12	1	DRIVER SIDE ARM	C-001997
13	1	PASSENGER SIDE ARM	C-001998
14	2	ZIP TIE	300140-8



# BASEPLATE KIT INSTALLATION INSTRUCTIONS

**KIT# 1628-1**

11/19/12  
KS

ROADMASTER, Inc. 6110 NE 127th Ave. Vancouver, WA 98682 360-896-0407 fax 360-735-9300 www.roadmasterinc.com

This is one of our XL series brackets, which allows the visible front portion of the bracket to be easily removed from the front of the vehicle (Fig.A and Fig.B). The bracket consists of a main receiver brace, two rear braces, two removable front braces, and a hardware pack.

The main receiver braces mount to the frame rails and the bumper core mounting points. The rear braces mount to the frame rails and main receiver brace. The removable front braces install in the main receiver braces.

Before starting the installation, lay out the kit components in order, as they will be used. This will give you a visual idea of how the components work, and will also confirm that everything is present and accounted for.



**IMPORTANT:** All baseplates **must** be assembled with all the bolts left loose for final adjustment and positioning (before tightening) unless otherwise instructed. All bolts **must** be torqued for proper strength. If more than one bolt is used per fastening point, the diagram may only show one. Use flat washers over all slotted holes and lock washers on all fasteners.

## WARNING

Failure to heed these warnings or follow the installation instructions may result in a voided warranty, loss of towed vehicle, personal injury or death.

- Do not weld or modify this baseplate or its components. Welding or modification will void the warranty.
- Do not use this document as a basis to design/fabricate a baseplate, as it may not show all parts or structural components.
- We strongly recommend professional installation.
- If the towed vehicle has been in an accident, it must be properly repaired before attaching the baseplate. Do not install the baseplate if any structural frame damage is found.
- The installer must use all bolts and parts supplied. If running changes were made by the vehicle manufacturer after this kit was designed, some bolts or other fasteners may no longer be the correct size. It is the installer's responsibility to verify this kit is securely fastened to the vehicle.
- Use Loctite® Red on all bolts used to secure this baseplate. Torque all bolts to the specifications found at the end of these instructions. Do not over-torque the bolts or failure may occur.
- The installer must inspect the baseplate to ensure adequate clearance, particularly around hoses, air conditioner lines, radiators, etc. or non-warranty failure may result.
- Roadmaster manufactures many styles of baseplates. If your baseplate has removable arms, they must be removed before driving the vehicle, unless the arms can be pinned or padlocked in place. If not secured, the arms could vibrate out.
- Some motorhome chassis have such a tight turning radius that you can damage your motorhome, towed vehicle, tow bar or baseplate while turning sharply. Before getting on the road, test your turning radius in an empty parking lot. Turning too sharply could result in non-warranty damage to your towing system, motorhome and/or towed vehicle.
- Do not back up with the towed vehicle attached or non-warranty damage will occur to your towing system or vehicles.
- The safety cables must connect the towing vehicle to the towed vehicle frame to frame, with the cables crossed, with enough slack for sharp turns. See cable instructions for proper routing. Failure to do so will result in non-warranty damage and/or the loss of the towed vehicle.
- This kit is designed for use with ROADMASTER tow bars and ROADMASTER adapters only. Using this kit with other brands, without an approved ROADMASTER adapter, may result in non-warranty damage or injury.
- Receiver extensions and out-of-level towing situations of 3 inches or more. This can cause the system to swing much higher and lower, causing excessive strain on the tow bar, baseplate and frame. That can cause the towing system to fail, causing property damage, personal injury or even death. If you must use a receiver extension or drop hitch to tow, it will reduce your receiver's weight capacity by 1/3 to avoid damaging your system. Never use more than one extension and/or drop hitch, as this will void your warranty.
- Every 3,000 miles, the owner must inspect all mounting points for cracks or fatigue, and check the fasteners for proper torque, according to the bolt torque requirements chart on the last page of these instructions.
- The owner must follow the vehicle manufacturer's instructions to prepare the vehicle for towing. Failure to do so may cause severe damage to the vehicle.
- This baseplate is only warranted for the original installation. Installing a used baseplate on another vehicle is not recommended and will void the warranty.



# BASEPLATE KIT INSTALLATION INSTRUCTIONS

**KIT# 1628-1**

11/19/12  
KS

ROADMASTER, Inc. 6110 NE 127th Ave. Vancouver, WA 98682 360-896-0407 fax 360-735-9300 www.roadmasterinc.com



1. **Important:** please use all supplied bolts and parts and read all instructions carefully before beginning this installation. The majority of questions you may have can be answered within the text, and proper installation will ensure safe and secure travel. Now, begin the installation by removing seven plastic fasteners and five 12mm (head) bolts attaching the splash shield to the core support and subframe (Fig.C).

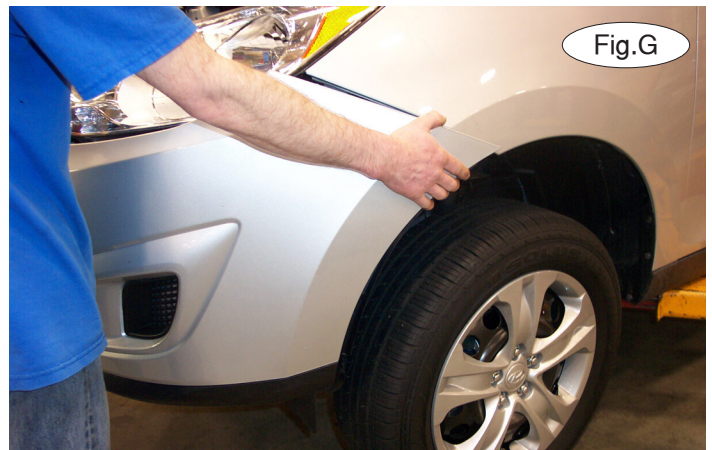
2. On each side, remove one plastic fastener attaching the splash shield to the fender liner (Fig.D).



3. On each side, remove one plastic fastener attaching the fender liner to the fascia and one 8mm screw attaching the corner of the fascia to the fender (Fig.E).

4. Remove two 8mm (head) bolts and four plastic fasteners attaching the top of the fascia to the core support (Fig.F).

5. Pull out and forward on the corners of the fascia to remove it (Fig.G). Unplug the fog lights, if the vehicle is so equipped.



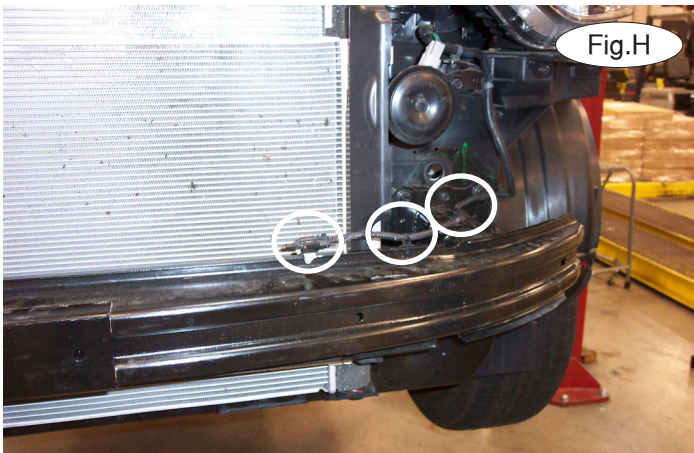


# BASEPLATE KIT INSTALLATION INSTRUCTIONS

**KIT# 1628-1**

11/19/12  
KS

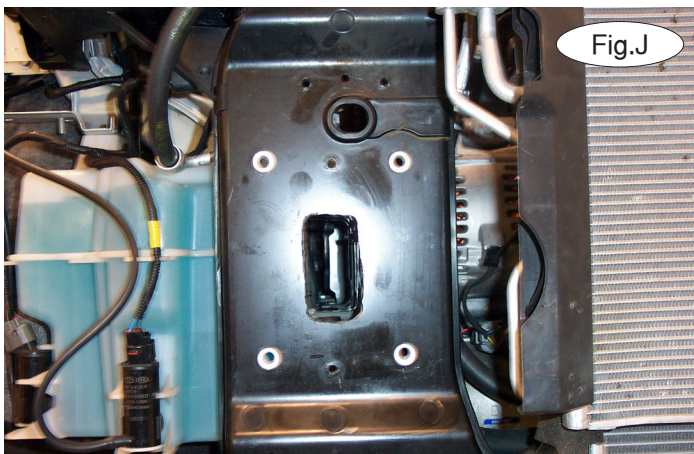
ROADMASTER, Inc. 6110 NE 127th Ave. Vancouver, WA 98682 360-896-0407 fax 360-735-9300 www.roadmasterinc.com



6. Remove three plastic fasteners attaching the ambient temperature sensor to the bumper core (Fig.H).

7. On each side, remove four 10mm (head) bolts attaching the bumper core to the core support (Fig.I). It will not be replaced. *Note:* retain the bumper core for replacement in case the bracket is ever removed. Retain the hardware for installation in a later step.

8. On each side, use a die grinder to enlarge the opening in the end of the core support until it is as large as the opening in the end of the frame rail (Fig.J).



9. On the driver's side, remove three 10mm (head) bolts attaching the lower half of the air box to the frame rail (Fig.K).

10. Remove three 10mm (head) bolts attaching the passenger side splash shield to the bottom of the frame rail (Fig.L). *Note:* only two are pictured in Figure L.





# BASEPLATE KIT INSTALLATION INSTRUCTIONS

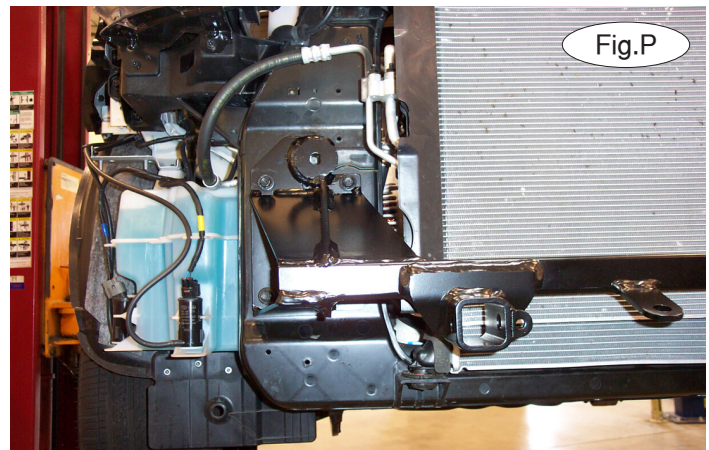
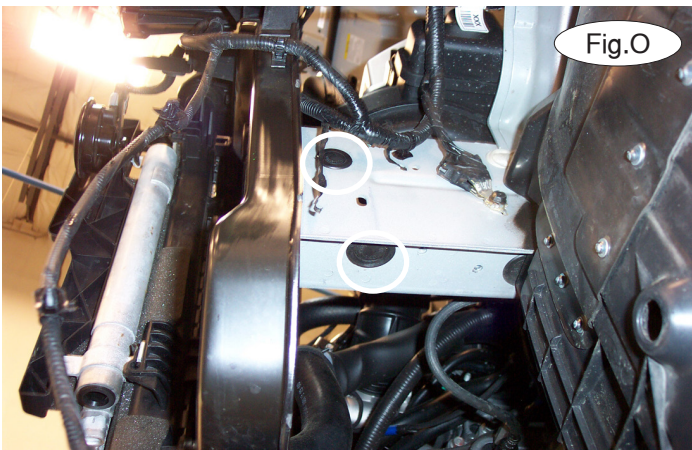
**KIT# 1628-1**

11/19/12  
KS

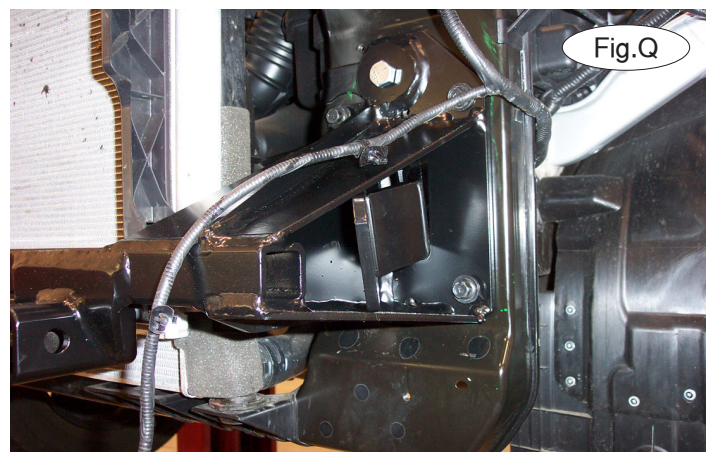
ROADMASTER, Inc. 6110 NE 127th Ave. Vancouver, WA 98682 360-896-0407 fax 360-735-9300 www.roadmasterinc.com



11. Trim the side splash shield using the yellow lines in Figure M as a guide. Figure N shows the completed trimming.
12. Remove the two plugs on the driver's side frame rail – one in the bottom, one to the outside (Fig.O). Now, remove the two plugs on the passenger side – one on the bottom, one to the inside. *Note:* due to manufacturing variances, the one to the inside may only have a piece of tape over it.



13. Place the main receiver brace over the bumper core mounting points and replace the eight 10mm (head) bolts you removed in step 7 (Fig.P – passenger side).
14. On each side, place a  $\frac{1}{2}$ " x  $\frac{1}{2}$ " bolt through the upper mounting point in the main receiver brace, and through the frame rail. Place a  $\frac{1}{4}$ " x  $\frac{1}{4}$ " spacer over the bolt and finish with a  $\frac{1}{2}$ " lock washer and nut.
15. Working on the driver's side, place the rear brace through the opening in the frame rail (Fig.Q).



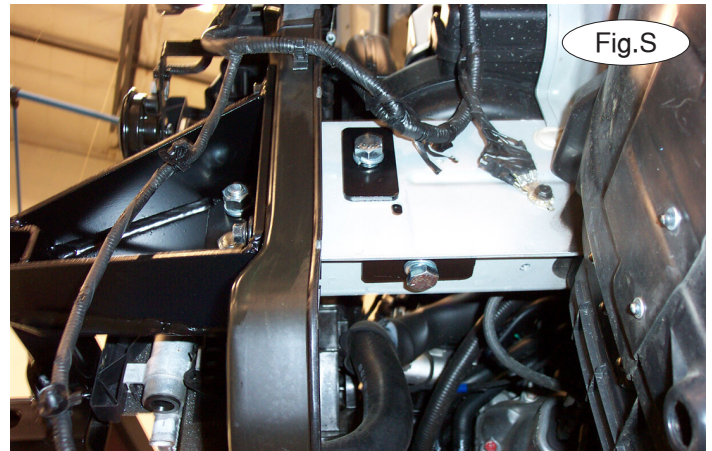
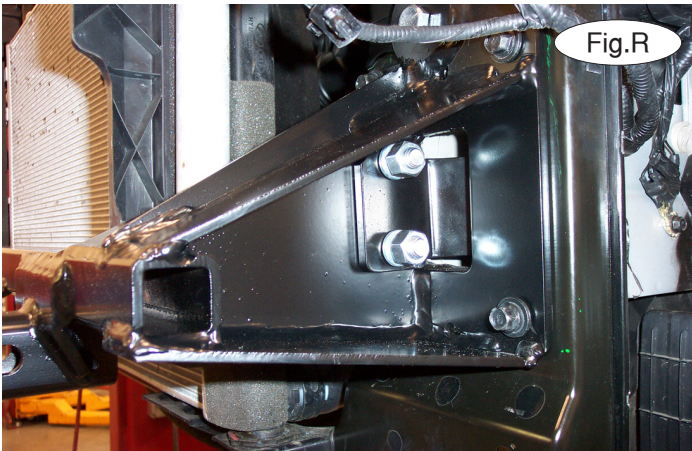


# BASEPLATE KIT INSTALLATION INSTRUCTIONS

**KIT# 1628-1**

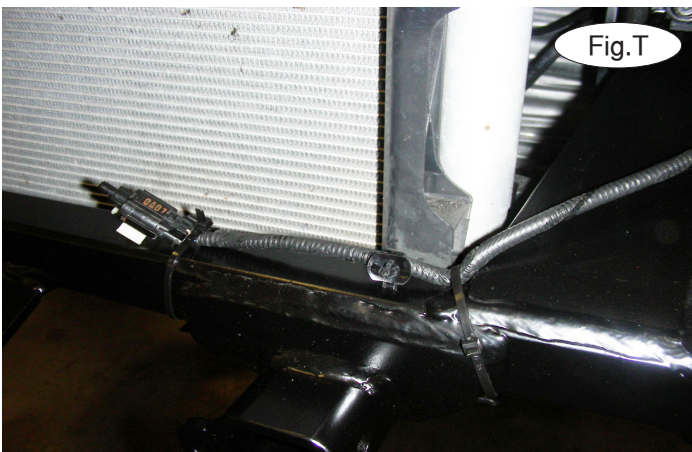
11/19/12  
KS

ROADMASTER, Inc. 6110 NE 127th Ave. Vancouver, WA 98682 360-896-0407 fax 360-735-9300 www.roadmasterinc.com



16. Using two of the supplied  $\frac{1}{2}$ " x  $1\frac{1}{2}$ " bolts and  $\frac{1}{2}$ " lock washers and nuts, bolt the rear brace to the main receiver brace (Fig.R).

17. Place a  $\frac{3}{16}$ " x  $1\frac{1}{2}$ " x 3" backing plate and a  $\frac{1}{2}$ " lock washer over one of the supplied  $\frac{1}{2}$ " x  $1\frac{1}{2}$ " bolts, and bolt through the opening in the side of the frame rail and into the weld nut in the rear brace. Repeat this process for the bottom hole.



18. Repeat steps 15 through 17 for the passenger side. Now, starting with the bumper core bolts, tighten all bolts to the bolt torque requirements found at the end of this document.

19. Zip tie the ambient temperature sensor to the main receiver brace (Fig.T).

20. Trim the fascia using the yellow lines in Figure U as a guide for trimming. Figure V shows the completed trimming with dimensions noted.

21. Reinstall the fascia by reversing steps 1 through 5.





# BASEPLATE KIT INSTALLATION INSTRUCTIONS

**KIT# 1628-1**

11/19/12  
KS

ROADMASTER, Inc. 6110 NE 127th Ave. Vancouver, WA 98682 360-896-0407 fax 360-735-9300 www.roadmasterinc.com

- 22. Insert the removable front bracket arms into the front receiver braces, and twist each one 90 degrees to lock.
- 23. Attach the 8" safety cables with the cable connectors (Q-Links) to the front of the receiver braces (Fig.W).
- 24. Attach the ends of the safety cables to the tow vehicle's safety cables.
- 25. Install the tow bar to the mounting bracket according to the manufacturer's instructions.



## BOLT TORQUE REQUIREMENTS

Note: The torque values represented below are intended as general guidelines. Torque requirements for specific applications may vary. Roadmaster does not warrant this information to be accurate for all applications and disclaims all liability for any claims or damages which may result from its use.

### STANDARD BOLTS

Thread Size	Grade	Torque
5/16.....	5.....	13 ft./lb.
3/8.....	5.....	23 ft./lb.
7/16.....	5.....	37 ft./lb.
1/2.....	5.....	56 ft./lb.
5/8.....	5.....	150 ft./lb.

### METRIC BOLTS

Thread Size	Grade	Plated / Unplated
8mm-1.0 .....	8.8 .....	20 ft./lb. 18 ft./lb.
8mm-1.25 .....	8.8 .....	19 ft./lb. 18 ft./lb.
10mm-1.25 .....	8.8 .....	38 ft./lb. 36 ft./lb.
10mm-1.5 .....	8.8 .....	37 ft./lb. 35 ft./lb.

### METRIC BOLTS

Thread Size	Grade	Plated / Unplated
12mm-1.25 .....	8.8 .....	70 ft./lb. 65 ft./lb.
12mm-1.5 .....	8.8 .....	66 ft./lb. 61 ft./lb.
12mm-1.75 .....	8.8 .....	65 ft./lb. 60 ft./lb.
14mm-2.0 .....	8.8 .....	104 ft./lb. 97 ft./lb.

All illustrations and specifications contained herein are based on the latest information available at the time of publication approval. ROADMASTER, INC. reserves the right to make changes at any time without notice in material, specification and models or to discontinue models.