



# MOUNTING BRACKET KIT INSTALLATION INSTRUCTIONS

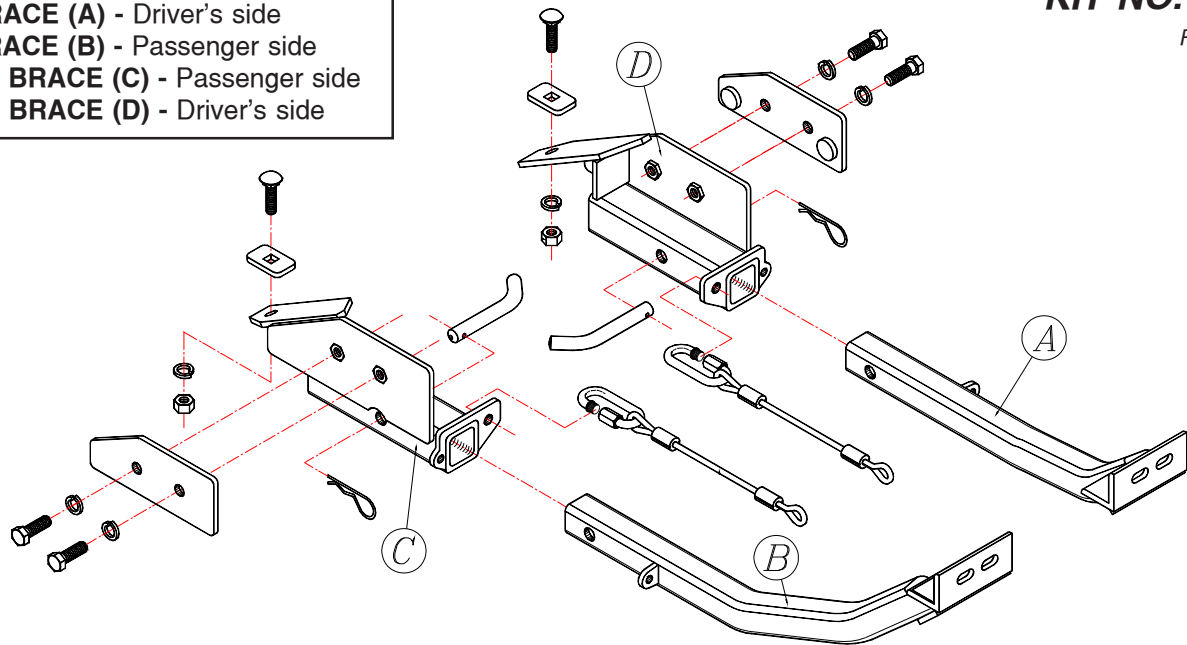
ROADMASTER, Inc. 6110 NE 127th Ave. Vancouver, WA 98682 1-800-669-9690 fax 360-735-9300 www.roadmasterinc.com

## PARTS LIST:

- 1- FRONT BRACE (A) - Driver's side
- 1- FRONT BRACE (B) - Passenger side
- 1- RECEIVER BRACE (C) - Passenger side
- 1- RECEIVER BRACE (D) - Driver's side

## KIT NO. 172-5

File #1459



041999

**IMPORTANT:** All brackets **must** be assembled with all the bolts left loose for final adjustment and positioning (before tightening) unless otherwise instructed. All bolts **must** be torqued for proper strength. If more than one bolt is used per fastening point, the diagram may only show one.

- Use flat washers over all slotted holes
- Use lock washers on all fasteners

ROADMASTER Limited Warranty, including One-Year Conditional Warranty Text and Product Registration Card, in Carton.



## WARNING

- Do not use this document for custom fabrication, as it may not show all parts or structural components. Custom fabrication or an attempt to copy this bracket design could result in loss of the towed vehicle.
- The owner must inspect all mounts and brackets before each use for cracks or other signs of fatigue. Also, inspect the fasteners for proper torque, according to the bolt torque requirements chart on the last page. Failure to do so could result in loss of the towed vehicle.
- The owner must check the manufacturer's instructions for the proper procedure(s) to prepare the vehicle for towing. Some vehicles must be equipped with a transmission lube pump, an axle disconnect, driveline disconnect or free-wheeling hubs before they can be towed. Failure to properly equip the vehicle will cause severe damage to the transmission.
- The installer must read the instructions and use all bolts and parts supplied. Failure to securely fasten the bracket could result in loss of the towed vehicle.
- If running changes were made by the vehicle manufacturer after this bracket was designed, some bolts or other fasteners in the included hardware pack may no longer be the correct size. It is the installer's responsibility to verify that the bracket is securely fastened to the vehicle, and fitted with the correct hardware, to account for these changes. Failure to securely fasten the bracket could result in loss of the towed vehicle.
- If the towed vehicle has been in an accident, it must be properly repaired before attaching the bracket. Do not install the bracket if any structural frame damage is found. Failure to repair the damage may result in the loss of the towed vehicle.

- Some motorhome chassis have such a tight turning radius that you can damage your motorhome, towed vehicle, tow bar or bracket while turning sharply. Before getting on the road, test your turning radius in an empty parking lot. Turning too sharply could result in non-warranty damage to towing system, motorhome and/or towed vehicle.
- Do not back up with the towed vehicle attached or non-warranty damage will occur to your towing system, motorhome and/or towed vehicle.
- The safety cables must connect the towing vehicle to the towed vehicle frame to frame, with the cables crossed, with enough slack for sharp turns. Refer to the cable instructions for proper routing. Failure to leave enough slack in the safety cables, or failure to connect the safety cables frame to frame, will result in the loss of the towed vehicle.
- This bracket is designed for use with ROADMASTER tow bars and ROADMASTER adaptors only. Using this bracket with other brands, without an approved ROADMASTER adaptor, may result in non-warranty damage or injury.
- Upon final installation, the installer must inspect the bracket to ensure adequate clearance, particularly around hoses, air conditioner lines, radiators, etc., or non-warranty damage to the towed vehicle will result.
- This bracket is only warranted for the original installation. Installing a used bracket on another vehicle is not recommended and will void the warranty.



## WARNING

Failure to follow these instructions can result in property damage, personal injury or even death.

# MOUNTING BRACKET KIT INSTALLATION INSTRUCTIONS

ROADMASTER, Inc. 6110 NE 127th Ave. Vancouver, WA 98682 1-800-669-9690 fax 360-735-9300 www.roadmasterinc.com

## KIT NO. 172-5

1. This bracket kit is an **XL Series** quick disconnect bracket consisting of two receiver braces and two front braces which are removable. The receiver braces bolt to the front tow plates and main frame on each side. The lower splash panel will have to be trimmed to allow mounting the receivers to the inside of the tow plates.
2. Hold the receiver braces to the inside of the tow plates with the back of the receiver against the frame. Bolt through the tow plate using the large ¼" backing plate to sandwich the tow plate. Use two ½" x 1½" bolts with lock washers for each brace. *Note:* some models will have oil cooler lines routed close to the inside of the driver side frame. Make sure the lines do not make contact with the bracket or the bolts after installation.
3. Insert the front braces into the receivers and pin in place using the supplied 5/8" draw pins and spring clips.
4. Install the tow bar according to the manufacturer's instructions. Then, align both the braces and the tow bar.
5. Once everything is aligned, tighten the receiver bolts.
6. Now, using the rear of the receiver braces as templates, drill one ½" hole per side in the frame. Fishwire a ½" x 1½" carriage bolt with a ¼" x 1¼" x 2" sq. holed backing plate through the access hole on the outside of each sub frame and through the drilled holes. Finish bolting with ½" nuts and lock washers.
7. Tighten all bolts to the torque specifications below. Connect the safety cables to the lower receivers with the supplied quick links and then to the tow vehicles cables on the bar. *Note:* make certain that the tow vehicle safety cables are connected to the lower receiver braces.

### HARDWARE LIST:

- 4-1/2" X 1 ½ bolts
- 2-1/2" x 1 ½" carriage bolts
- 2-1/2" nuts
- 6-1/2" lock washers
- 2-large ¼" backing plates
- 2-1/4" 1 ¼" x 2" sq. holed backing plates
- 2-5/8" draw pins
- 2-1/8" spring pins
- 2-quick links
- 2-17" safety cables

041999

**CAUTION:** Installer must read instructions and use all bolts and parts supplied.

FAILURE TO FOLLOW THESE INSTRUCTIONS CAN RESULT IN DEATH, PERSONAL INJURY OR PROPERTY DAMAGE

### BOLT TORQUE REQUIREMENTS

Note: The torque values represented below are intended as general guidelines. Torque requirements for specific applications may vary. Roadmaster does not warrant this information to be accurate for all applications and disclaims all liability for any claims or damages which may result from its use.

STANDARD BOLTS			METRIC BOLTS			METRIC BOLTS		
Thread Size	Grade	Torque	Thread Size	Grade	Plated/Unplated	Thread Size	Grade	Plated/Unplated
5/16	5	13 ft./lb.	8mm-1.0	8.8	20 ft./lb. 18 ft./lb.	12mm-1.25	8.8	70 ft./lb. 65 ft./lb.
3/8	5	23 ft./lb.	8mm-1.25	8.8	19 ft./lb. 18 ft./lb.	12mm-1.5	8.8	66 ft./lb. 61 ft./lb.
7/16	5	37 ft./lb.	10mm-1.25	8.8	38 ft./lb. 36 ft./lb.	12mm-1.75	8.8	65 ft./lb. 60 ft./lb.
1/2	5	56 ft./lb.	10mm-1.5	8.8	37 ft./lb. 35 ft./lb.	14mm-2.0	8.8	104 ft./lb. 97 ft./lb.
5/8	5	150 ft./lb.						