



# MOUNTING BRACKET KIT INSTALLATION INSTRUCTIONS

ROADMASTER, Inc. 6110 NE 127th Ave. Vancouver, WA 98682 1-800-669-9690 fax 360-735-9300 www.roadmasterinc.com

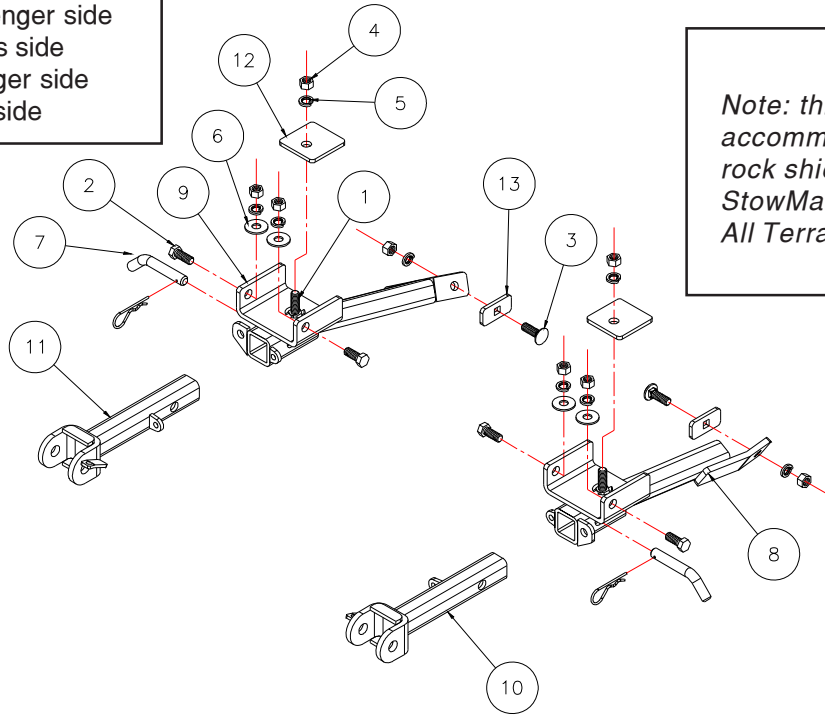
## PARTS LIST:

- 1- FRONT BRACE (A) - Passenger side
- 1- FRONT BRACE (B) - Driver's side
- 1- MAIN BRACE (C) - Passenger side
- 1- MAIN BRACE (D) - Driver's side

**KIT NO. 199-6**

### Important

Note: this bracket will not accommodate the Guardian rock shield, Stowaway or the StowMaster and StowMaster All Terrain tow bars.



12/12/05

**IMPORTANT:** All brackets **must** be assembled with all the bolts left loose for final adjustment and positioning (before tightening) unless otherwise instructed. All bolts **must** be torqued for proper strength. If more than one bolt is used per fastening point, the diagram may only show one.

- Use flat washers over all slotted holes
- Use lock washers on all fasteners

ROADMASTER Limited Warranty, including One-Year Conditional Warranty Text and Product Registration Card, in Carton.



## WARNING

- Do not use this document for custom fabrication, as it may not show all parts or structural components. Custom fabrication or an attempt to copy this bracket design could result in loss of the towed vehicle.
- The owner must inspect all mounts and brackets before each use for cracks or other signs of fatigue. Also, inspect the fasteners for proper torque, according to the bolt torque requirements chart on the last page. Failure to do so could result in loss of the towed vehicle.
- The owner must check the manufacturer's instructions for the proper procedure(s) to prepare the vehicle for towing. Some vehicles must be equipped with a transmission lube pump, an axle disconnect, driveline disconnect or free-wheeling hubs before they can be towed. Failure to properly equip the vehicle will cause severe damage to the transmission.
- The installer must read the instructions and use all bolts and parts supplied. Failure to securely fasten the bracket could result in loss of the towed vehicle.
- If running changes were made by the vehicle manufacturer after this bracket was designed, some bolts or other fasteners in the included hardware pack may no longer be the correct size. It is the installer's responsibility to verify that the bracket is securely fastened to the vehicle, and fitted with the correct hardware, to account for these changes. Failure to securely fasten the bracket could result in loss of the towed vehicle.
- If the towed vehicle has been in an accident, it must be properly repaired before attaching the bracket. Do not install the bracket if any structural frame damage is found. Failure to repair the damage may result in the loss of the towed vehicle.

- Some motorhome chassis have such a tight turning radius that you can damage your motorhome, towed vehicle, tow bar or bracket while turning sharply. Before getting on the road, test your turning radius in an empty parking lot. Turning too sharply could result in non-warranty damage to towing system, motorhome and/or towed vehicle.
- Do not back up with the towed vehicle attached or non-warranty damage will occur to your towing system, motorhome and/or towed vehicle.
- The safety cables must connect the towing vehicle to the towed vehicle frame to frame, with the cables crossed, with enough slack for sharp turns. Refer to the cable instructions for proper routing. Failure to leave enough slack in the safety cables, or failure to connect the safety cables frame to frame, will result in the loss of the towed vehicle.
- This bracket is designed for use with ROADMASTER tow bars and ROADMASTER adaptors only. Using this bracket with other brands, without an approved ROADMASTER adaptor, may result in non-warranty damage or injury.
- Upon final installation, the installer must inspect the bracket to ensure adequate clearance, particularly around hoses, air conditioner lines, radiators, etc., or non-warranty damage to the towed vehicle will result.
- This bracket is only warranted for the original installation. Installing a used bracket on another vehicle is not recommended and will void the warranty.



## WARNING

Failure to follow these instructions can result in property damage, personal injury or even death.

# MOUNTING BRACKET KIT INSTALLATION INSTRUCTIONS

ROADMASTER, Inc. 6110 NE 127th Ave. Vancouver, WA 98682 1-800-669-9690 fax 360-735-9300 www.roadmasterinc.com

**KIT NO. 199-6**

1. This bracket kit is one of our MX series, which is designed to be partly removable. The kit consists of two main receiver braces, front braces and a hardware pack. The main receiver braces mount below the front bumper facia to the front frame tubes and frame cross member. The front braces insert into the receiver brace on each side. Start by laying the kit out according to the illustration. This will give you a visual idea of how the kit installs and also confirm that the kit components are present and accounted for.
2. To gain access to the mounting area, remove the front grille and bumper.
3. Locate the front tow hooks in the frame tubes and remove. The front of the receiver braces will utilize this mounting area.
4. Insert a ¼" x 3" x 3" backing plate in the front of each frame tube so that the hole lines up with the existing hole in the bottom of each frame tube. The hole in the backing plate is closer to the front of the plate than the back, install with the front forward. Hold a receiver brace to the bottom of the front frame tube and bolt in place using two ½" nuts and lock washers. Install the remaining receiver brace then tighten to hold the positioning.
5. Bolt through the sides of the receiver braces and frame tubes with ½" x ¼" bolts, flat washers, lock washers and nuts. Be sure to use flat washers on the inside of the frame tubes.
6. Install the front braces and pin in position. Check the front alignment across the mounting face, adjust if needed then tighten all mounting bolts to maintain alignment.
7. Using the receiver braces as drilling templates, drill a 17/32" hole through each side of the front frame cross member.
8. Bolt through the frame cross member and receiver braces on each side with a ½" x 1½" carriage bolt, ¼" x 1½" x 2½" sq. holed backing plate, lock washer and nut. Be sure to use the backing plate inside the subframe. A large access hole in the front of the subframe on each side will provide the needed access.
9. Torque all mounting bolts to the specifications below.
10. Remove the front braces from the receiver tubes and reinstall the bumper and grille. *Note:* some models may have plastic inserts around the tow hooks, trim or remove these plastic inserts.
11. Install the front braces and secure with 5/8" draw pins and 1/8" spring pins.
12. Install the tow bar according to the manufacturer's instructions and torque all mounting bolts to the specifications below. Attach the safety cables to the main receiver brace.

**12/12/05**

**CAUTION:** Installer must read instructions and use all bolts and parts supplied.

FAILURE TO FOLLOW THESE INSTRUCTIONS CAN RESULT IN DEATH, PERSONAL INJURY OR PROPERTY DAMAGE

## BOLT TORQUE REQUIREMENTS

Note: The torque values represented below are intended as general guidelines. Torque requirements for specific applications may vary. Roadmaster does not warrant this information to be accurate for all applications and disclaims all liability for any claims or damages which may result from its use.

| STANDARD BOLTS |       |             | METRIC BOLTS |       |                       | METRIC BOLTS |       |                        |
|----------------|-------|-------------|--------------|-------|-----------------------|--------------|-------|------------------------|
| Thread Size    | Grade | Torque      | Thread Size  | Grade | Plated/Unplated       | Thread Size  | Grade | Plated/Unplated        |
| 5/16           | 5     | 13 ft./lb.  | 8mm-1.0      | 8.8   | 20 ft./lb. 18 ft./lb. | 12mm-1.25    | 8.8   | 70 ft./lb. 65 ft./lb.  |
| 3/8            | 5     | 23 ft./lb.  | 8mm-1.25     | 8.8   | 19 ft./lb. 18 ft./lb. | 12mm-1.5     | 8.8   | 66 ft./lb. 61 ft./lb.  |
| 7/16           | 5     | 37 ft./lb.  | 10mm-1.25    | 8.8   | 38 ft./lb. 36 ft./lb. | 12mm-1.75    | 8.8   | 65 ft./lb. 60 ft./lb.  |
| 1/2            | 5     | 56 ft./lb.  | 10mm-1.5     | 8.8   | 37 ft./lb. 35 ft./lb. | 14mm-2.0     | 8.8   | 104 ft./lb. 97 ft./lb. |
| 5/8            | 5     | 150 ft./lb. |              |       |                       |              |       |                        |



1-800-669-9690

R O A D M A S T E R

# MOUNTING BRACKET KIT INSTALLATION INSTRUCTIONS

ROADMASTER, Inc. 6110 NE 127th Ave. Vancouver, WA 98682 1-800-669-9690 fax 360-735-9300 www.roadmasterinc.com

**KIT NO. 199-6**

## Hardware

| Item | Qty | Length | Width | Name                          | Part No.  |
|------|-----|--------|-------|-------------------------------|-----------|
| 1    | 2   | 1 1/2" | 1/2"  | BOLT                          | 350095-00 |
| 2    | 4   | 1 1/4" | 1/2"  | BOLT                          | 350094-00 |
| 3    | 2   | 1 1/2" | 1/2"  | CARRIAGE BOLT                 | 350362-00 |
| 4    | 8   |        | 1/2"  | NUT                           | 350258-00 |
| 5    | 8   |        | 1/2"  | LOCK WASHER                   | 350309-00 |
| 6    | 4   |        | 1/2"  | FLAT WASHER                   | 350308-00 |
| 7    | 1   |        | 5/8"  | DRAW PINS, SPRING PINS        | 357034-00 |
| 8    | 1   |        |       | DRIVER SIDE RECEIVER BRACE    | C-000219  |
| 9    | 1   |        |       | PASSENGER SIDE RECEIVER BRACE | C-000220  |
| 10   | 1   |        |       | DRIVER SIDE ARM WELDMENT      | C-000223  |
| 11   | 1   |        |       | PASSENGER SIDE ARM            | C-000224  |
| 12   | 2   |        |       | 3" x 3" BACKING PLATE         | A-000432  |
| 13   | 2   |        |       | 1 1/2" x 2 1/2" BACKING PLATE | A-000084  |

12/12/05  
KB

# CAUTION:

## Installer must read instructions and use all bolts and parts supplied.

FAILURE TO FOLLOW THESE INSTRUCTIONS CAN RESULT IN DEATH, PERSONAL INJURY OR PROPERTY DAMAGE

### BOLT TORQUE REQUIREMENTS

Note: The torque values represented below are intended as general guidelines. Torque requirements for specific applications may vary. Roadmaster does not warrant this information to be accurate for all applications and disclaims all liability for any claims or damages which may result from its use.

#### STANDARD BOLTS

| Thread Size | Grade | Torque      |
|-------------|-------|-------------|
| 5/16        | 5     | 13 ft./lb.  |
| 3/8         | 5     | 23 ft./lb.  |
| 7/16        | 5     | 37 ft./lb.  |
| 1/2         | 5     | 56 ft./lb.  |
| 5/8         | 5     | 150 ft./lb. |

#### METRIC BOLTS

| Thread Size | Grade | Plated/Unplated       |
|-------------|-------|-----------------------|
| 8mm-1.0     | 8.8   | 20 ft./lb. 18 ft./lb. |
| 8mm-1.25    | 8.8   | 19 ft./lb. 18 ft./lb. |
| 10mm-1.25   | 8.8   | 38 ft./lb. 36 ft./lb. |
| 10mm-1.5    | 8.8   | 37 ft./lb. 35 ft./lb. |

#### METRIC BOLTS

| Thread Size | Grade | Plated/Unplated        |
|-------------|-------|------------------------|
| 12mm-1.25   | 8.8   | 70 ft./lb. 65 ft./lb.  |
| 12mm-1.5    | 8.8   | 66 ft./lb. 61 ft./lb.  |
| 12mm-1.75   | 8.8   | 65 ft./lb. 60 ft./lb.  |
| 14mm-2.0    | 8.8   | 104 ft./lb. 97 ft./lb. |

All illustrations and specifications contained herein are based on the latest information available at the time of publication approval. ROADMASTER, INC. reserves the right to make changes at any time without notice in material, specification and models or to discontinue models.