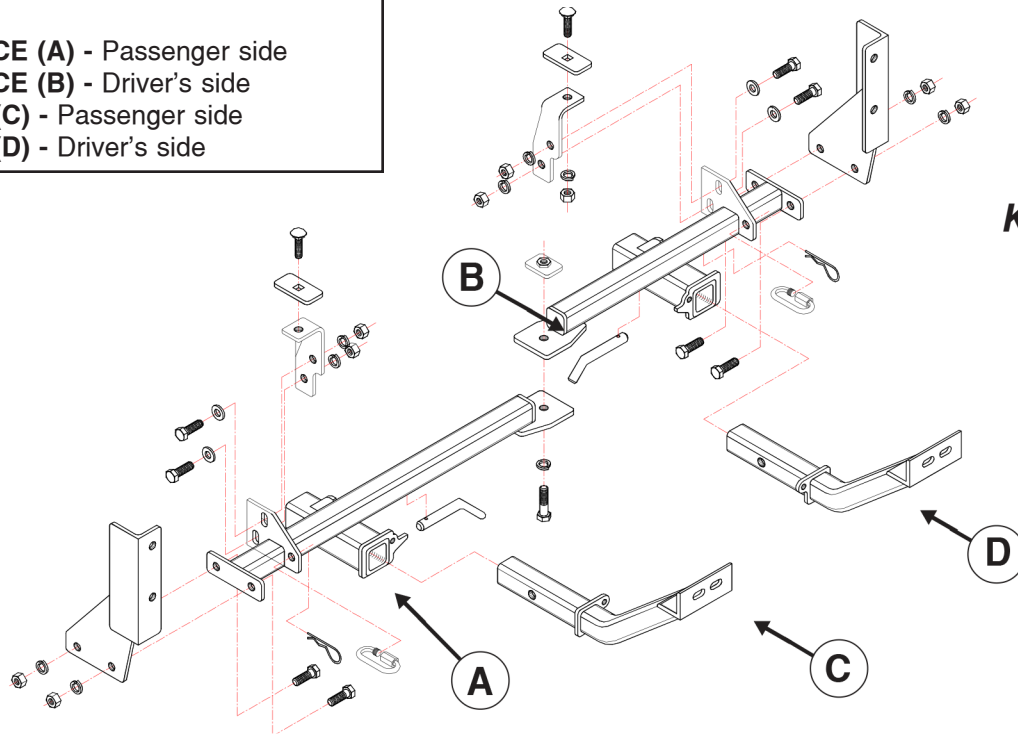


BASEPLATE KIT INSTALLATION INSTRUCTIONS

ROADMASTER, Inc. 6110 NE 127th Ave. Vancouver, WA 98682 360-896-0407 fax 360-735-9300 www.roadmasterinc.com

PARTS LIST:

- 1- RECEIVER BRACE (A) - Passenger side
- 1- RECEIVER BRACE (B) - Driver's side
- 1- FRONT BRACE (C) - Passenger side
- 1- FRONT BRACE (D) - Driver's side



KIT NO. 240-2

072398

IMPORTANT: All baseplates **must** be assembled with all the bolts left loose for final adjustment and positioning (before tightening) unless otherwise instructed. All bolts **must** be torqued for proper strength. If more than one bolt is used per fastening point, the diagram may only show one. Use flat washers over all slotted holes and lock washers on all fasteners.

WARNING

Failure to heed these warnings or follow the installation instructions may result in a voided warranty, loss of towed vehicle, personal injury or death.

- Do not weld or modify this baseplate or its components. Welding or modification will void the warranty.
- Do not use this document as a basis to design/fabricate a baseplate, as it may not show all parts or structural components.
- We strongly recommend professional installation.
- If the towed vehicle has been in an accident, it must be properly repaired before attaching the baseplate. Do not install the baseplate if any structural frame damage is found.
- The installer must use all bolts and parts supplied. If running changes were made by the vehicle manufacturer after this kit was designed, some bolts or other fasteners may no longer be the correct size. It is the installer's responsibility to verify this kit is securely fastened to the vehicle.
- Use Loctite® Red on all bolts used to secure this baseplate. Torque all bolts to the specifications found at the end of these instructions. Do not over-torque the bolts or failure may occur.
- The installer must inspect the baseplate to ensure adequate clearance, particularly around hoses, air conditioner lines, radiators, etc. or non-warranty failure may result.
- Roadmaster manufactures many styles of baseplates. If your baseplate has removable arms, they must be removed before driving the vehicle, unless the arms can be pinned or padlocked in place. If not secured, the arms could vibrate out.
- Some motorhome chassis have such a tight turning radius that you can damage your motorhome, towed vehicle, tow bar or baseplate while turning sharply. Before getting on the road, test your turning radius in

an empty parking lot. Turning too sharply could result in non-warranty damage to your towing system, motorhome and/or towed vehicle.

- Do not back up with the towed vehicle attached or non-warranty damage will occur to your towing system or vehicles.
- The safety cables must connect the towing vehicle to the towed vehicle frame to frame, with the cables crossed, with enough slack for sharp turns. See cable instructions for proper routing. Failure to do so will result in non-warranty damage and/or the loss of the towed vehicle.
- This kit is designed for use with ROADMASTER tow bars and ROADMASTER adapters only. Using this kit with other brands, without an approved ROADMASTER adapter, may result in non-warranty damage or injury.
- Receiver extensions and out-of-level towing situations of 3 inches or more. This can cause the system to swing much higher and lower, causing excessive strain on the tow bar, baseplate and frame. That can cause the towing system to fail, causing property damage, personal injury or even death. If you must use a receiver extension or drop hitch to tow, it will reduce your receiver's weight capacity by 1/3 to avoid damaging your system. Never use more than one extension and/or drop hitch, as this will void your warranty.
- Every 3,000 miles, the owner must inspect all mounting points for cracks or fatigue, and check the fasteners for proper torque, according to the bolt torque requirements chart on the last page of these instructions.
- The owner must follow the vehicle manufacturer's instructions to prepare the vehicle for towing. Failure to do so may cause severe damage to the vehicle.
- This baseplate is only warranted for the original installation. Installing a used baseplate on another vehicle is not recommended and will void the warranty.

BASEPLATE KIT INSTALLATION INSTRUCTIONS

ROADMASTER, Inc. 6110 NE 127th Ave. Vancouver, WA 98682 360-896-0407 fax 360-735-9300 www.roadmasterinc.com

KIT NO. 240-2

1. This bracket kit utilizes existing bumper mount bolts, the motor mount bracket and frame as mounting points. The kit consists of two side braces which bolt to the bumper mount bolts, two tubular center braces which bolt to the motor mount and side braces and small upper frame braces which bolt to the frame on each side and the tubular center braces. Two front tubular braces insert into receivers which are located under the front bumper. Work on one side at a time starting with the drivers side.
2. Look behind the bumper in the wheel well and find two large shoulder nuts which secure the front bumper mounting bracket. Remove the shoulder nuts and slide the side brace over the bumper bolts. Replace the nuts and tighten finger tight.
3. Take a 1/4" x 1 1/2" x 3" backing plate and a 1/2" x 1 1/2" carriage bolt and insert through the front inside of the inner frame in to the existing hole in the bottom of the frame. Bolt the small angle braces to the frame as illustrated using a 1/2" nut and lock washer. Tighten finger tight.
4. Follow steps 2 and 3 for the passenger side.
5. Take the shorter tubular center brace and bolt to the driver's side, angle brace and side brace. Use four 1/2" x 1 1/2" bolts, a flat washer, lock washers and nuts.
6. Follow step 5 for the passenger side then insert the threaded 1/4" x 1 1/4" x 2" backing plate into the motor mount over the unused lower hole and bolt through both tubular center braces using a 5/8" x 2" bolt and lock washer.
7. Align the braces and torque all the bolts to the specifications below.
8. Insert the front braces into the receivers and pin. Mount the tow bar to the front braces following the manufacturer's instructions.
9. Install the safety cables on the lower receiver braces in the holes provided and then to the tow vehicle.

Hardware:

- | | |
|--|--|
| 8- 1/2" x 1-1/2" bolts | 10- 1/2" lock washers |
| 2- 1/2" x 1-1/2" carriage bolts | 2- 5/8" receiver pins |
| 1- 5/8" x 2" bolt | 2- spring pins |
| 1- 5/8" lock washer | 2- quick couplers |
| 1- 1/4" x 1-1/4" x 2" threaded backing plate | 2- 13" safety cables |
| 2- 1/4" x 1-1/2" x 3" backing plates | 1- 1/4" x 2 1/2" x 5 3/4" passenger's side plate |
| 4- 1/2" flat washers | 1- 1/4" x 2 1/2" x 5 3/4" driver's side plate |
| 10- 1/2" nuts | |

072398

BOLT TORQUE REQUIREMENTS

Note: The torque values represented below are intended as general guidelines. Torque requirements for specific applications may vary. Roadmaster does not warrant this information to be accurate for all applications and disclaims all liability for any claims or damages which may result from its use.

STANDARD BOLTS			METRIC BOLTS			METRIC BOLTS		
Thread Size	Grade	Torque	Thread Size	Grade	Plated / Unplated	Thread Size	Grade	Plated / Unplated
5/16.....	5.....	13 ft./lb.	8mm-1.0.....	8.8.....	20 ft./lb. 18 ft./lb.	12mm-1.25.....	8.8.....	70 ft./lb. 65 ft./lb.
3/8.....	5.....	23 ft./lb.	8mm-1.25.....	8.8.....	19 ft./lb. 18 ft./lb.	12mm-1.5.....	8.8.....	66 ft./lb. 61 ft./lb.
7/16.....	5.....	37 ft./lb.	10mm-1.25.....	8.8.....	38 ft./lb. 36 ft./lb.	12mm-1.75.....	8.8.....	65 ft./lb. 60 ft./lb.
1/2.....	5.....	56 ft./lb.	10mm-1.5.....	8.8.....	37 ft./lb. 35 ft./lb.	14mm-2.0.....	8.8.....	104 ft./lb. 97 ft./lb.
5/8.....	5.....	150 ft./lb.						