

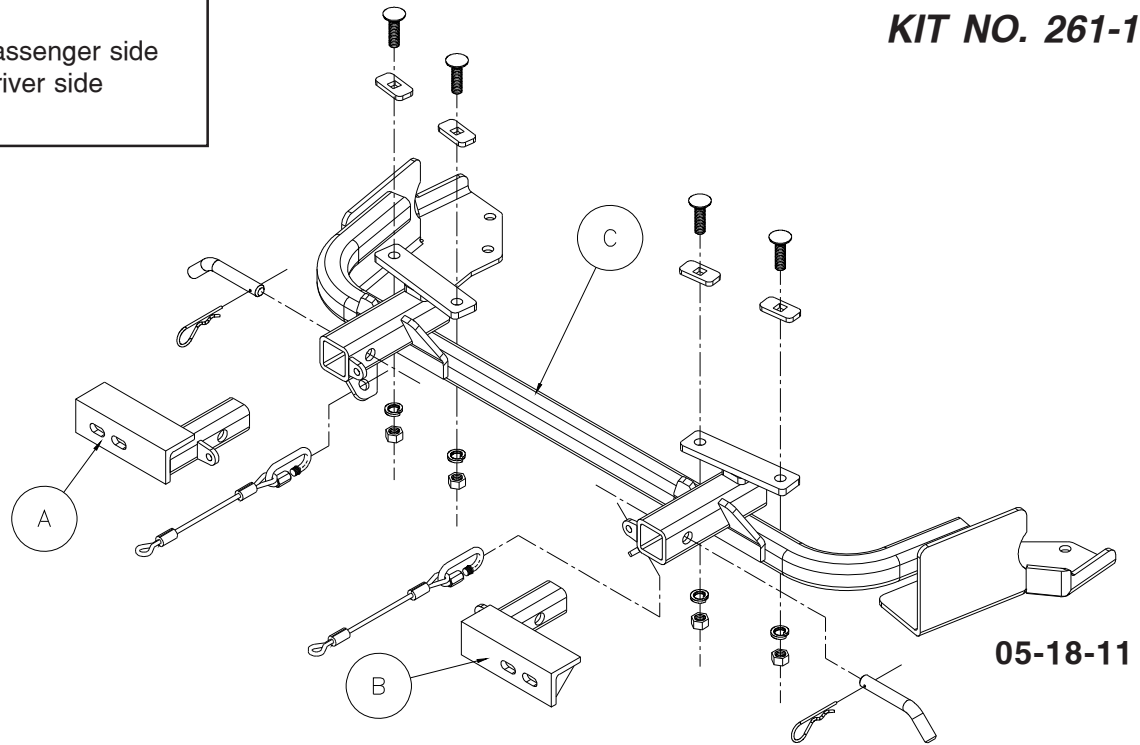
# BASEPLATE KIT INSTALLATION INSTRUCTIONS

ROADMASTER, Inc. 6110 NE 127th Ave. Vancouver, WA 98682 1-800-669-9690 fax 360-735-9300 www.roadmasterinc.com

**PARTS LIST:**

- 1- FRONT BRACE (A) - Passenger side
- 1- FRONT BRACE (B) - Driver side
- 1- MAIN BRACE (C)

**KIT NO. 261-1**



**IMPORTANT:** All brackets *must* be assembled with all the bolts left loose for final adjustment and positioning (before tightening) unless otherwise instructed. All bolts *must* be torqued for proper strength. If more than one bolt is used per fastening point, the diagram may only show one.

- Use flat washers over all slotted holes
- Use lock washers on all fasteners

## WARNING

Failure to follow these instructions can result in property damage, personal injury or even death.

- Installation of most mounting brackets requires moderate mechanical aptitude and skills. We strongly recommend professional installation by an experienced installer.
- The installer must read the instructions and use all bolts and parts supplied. Failure to do so could result in loss of the towed vehicle.
- Use Loctite® Red on all bolts used for mounting this bracket.
- Do not use this document for custom fabrication, as it may not show all parts or structural components. Custom fabrication or an attempt to copy this bracket design could result in loss of the towed vehicle.
- Every 3,000 miles, the owner must inspect the fasteners for proper torque, according to the bolt torque requirements chart on the last page of these instructions. The owner must also inspect all mounts and brackets for cracks or other signs of fatigue every 3,000 miles. Failure to do so could result in loss of the towed vehicle.
- The owner must check the vehicle manufacturer's instructions for the proper procedure(s) to prepare the vehicle for towing. Some vehicles must be equipped with a transmission lube pump, an axle disconnect, driveline disconnect or free-wheeling hubs before they can be towed. Failure to properly equip the vehicle will cause severe damage to the transmission.
- If running changes were made by the vehicle manufacturer after this bracket was designed, some bolts or other fasteners in the hardware pack may no longer be the correct size. It is the installer's responsibility to verify that the bracket is securely fastened to the vehicle and fitted with the correct hardware to account for these changes. Failure to securely fasten the bracket could result in loss of the towed vehicle.
- If the towed vehicle has been in an accident, it must be properly repaired before attaching the bracket. Do not install the bracket if any structural frame damage is found. Failure to repair the damage could result in the loss of the towed vehicle.
- Some motorhome chassis have such a tight turning radius that you can damage your motorhome, towed vehicle, tow bar or bracket while turning sharply. Before getting on the road, test your turning radius in an empty parking lot. Turning too sharply could result in non-warranty damage to towing system, motorhome and/or towed vehicle.
- Do not back up with the towed vehicle attached or non-warranty damage will occur to your towing system, motorhome and/or towed vehicle.
- The safety cables must connect the towing vehicle to the towed vehicle frame to frame, with the cables crossed, with enough slack for sharp turns. Refer to the cable instructions for proper routing. Failure to leave enough slack in the safety cables, or failure to connect the safety cables frame to frame, will result in the loss of the towed vehicle.
- This bracket is designed for use with ROADMASTER tow bars and ROADMASTER adaptors only. Using this bracket with other brands, without an approved ROADMASTER adaptor, may result in non-warranty damage or injury.
- Upon final installation, the installer must inspect the bracket to ensure adequate clearance, particularly around hoses, air conditioner lines, radiators, etc., or non-warranty damage to the towed vehicle will result.
- This bracket is only warranted for the original installation. Installing a used bracket on another vehicle is not recommended and will void the warranty.



# BASEPLATE KIT INSTALLATION INSTRUCTIONS

ROADMASTER, Inc. 6110 NE 127th Ave. Vancouver, WA 98682 1-800-669-9690 fax 360-735-9300 www.roadmasterinc.com

**KIT NO. 261-1**

1. **Important:** please use all supplied bolts and parts and read all instructions carefully before beginning this installation. The majority of questions you may have can be answered within the text, and proper installation will ensure safe and secure travel. Now, begin the installation. This is one of our XL bracket series, which allows the visible front portion of the brackets to be easily removed from the front of the vehicle. The bracket kit consists of a receiver brace, two front braces and a hardware pack. The rear receiver brace mounts to the bottom and side of the frame and protrudes through the lower grill below the bumper core. The front braces insert into the rear brace and pin in place. The lower grille has to be cut to fit around the braces, or can be removed from the chrome trim ring and left out for later replacement. The plastic air flaps on the sides of the radiator will also be trimmed to fit or left off the installation. Before starting the installation, lay out the kit components as illustrated. This will give you a visual idea of how the components work and also confirm that everything is present and accounted for.
2. Begin by removing the front fascia. Remove six plastic fasteners in the top of the fascia between the headlights. Remove three screws (7mm head) in each fender well, then remove eight more plastic fasteners on the bottom of the fascia. Pull forward, disconnect the fog light connections if present, then remove and set aside.
3. The bumper core has two formed plastic ends secured with screws (10mm head), remove and set aside.
4. Two plastic air seals are located on each side of the radiator, remove by pulling down and out then set aside (two plastic fasteners each).
5. Locate the horn on the passenger side and then remove horn and mount (10mm head bolt).
6. Pull the power steering cooling line and plastic stand offs from the bottom of the bumper core and leave loose for now.
7. Support the sub frame, then remove two lower sub frame bolts (15mm head) from each side.
8. Hold the main receiver brace in position under the bumper core over the sub frame bolt holes on each side. Bolt through the rear of the brace on each side with the stock sub frame bolts removed in the previous step. *Note:* use Loctite® Red on all bolts used for mounting this bracket.
9. Using the main receiver brace as a guide, drill four 17/32" holes in the bottom of the bumper core.
10. Fish wire 1/2" x 1 3/4" bolts, 1/4" x 1" x 2" backing plates through the ends of the bumper core into the drilled holes. Finish bolting through bumper core and receiver brace with 1/2" nuts and lock washers.
11. Use the included zip ties to secure the power steering line to the main brace tube. *Note:* avoid metal to metal contact with this line by using two zip ties together to create stand offs for the tube.
12. Torque all the mounting bolts to the specifications below.
13. Replace the formed ends in the bumper core reversing step 3 then remount the horn by bending mount to clear the brace.
14. Trim the plastic radiator air seals to fit around the brace and reinstall reversing step 4.
15. We are ready to put the fascia back on the vehicle but a decision must be made. To put the fascia back on, the grille must be trimmed to fit over the braces or removed from its trim ring and left off for refitting at a later time. Trimming involves trial fitting and marking the grill lattice work for cutting, Removing the grille from its trim ring entails removing the plastic rivets holding the lattice work to the trim ring. Once the decision is made, refit the fascia-reversing step 2.

## BOLT TORQUE REQUIREMENTS

Note: The torque values represented below are intended as general guidelines. Torque requirements for specific applications may vary. Roadmaster does not warrant this information to be accurate for all applications and disclaims all liability for any claims or damages which may result from its use.

STANDARD BOLTS			METRIC BOLTS			METRIC BOLTS		
Thread Size	Grade	Torque	Thread Size	Grade	Plated/Unplated	Thread Size	Grade	Plated/Unplated
5/16	5	13 ft./lb.	8mm-1.0	8.8	20 ft./lb. 18 ft./lb.	12mm-1.25	8.8	70 ft./lb. 65 ft./lb.
3/8	5	23 ft./lb.	8mm-1.25	8.8	19 ft./lb. 18 ft./lb.	12mm-1.5	8.8	66 ft./lb. 61 ft./lb.
7/16	5	37 ft./lb.	10mm-1.25	8.8	38 ft./lb. 36 ft./lb.	12mm-1.75	8.8	65 ft./lb. 60 ft./lb.
1/2	5	56 ft./lb.	10mm-1.5	8.8	37 ft./lb. 35 ft./lb.	14mm-2.0	8.8	104 ft./lb. 97 ft./lb.
5/8	5	150 ft./lb.						

All illustrations and specifications contained herein are based on the latest information available at the time of publication approval. ROADMASTER, INC. reserves the right to make changes at any time without notice in material, specification and models or to discontinue models.



# BASEPLATE KIT INSTALLATION INSTRUCTIONS

ROADMASTER, Inc. 6110 NE 127th Ave. Vancouver, WA 98682 1-800-669-9690 fax 360-735-9300 www.roadmasterinc.com

**KIT NO. 261-1**

- 16. Install the front braces by inserting into the receiver brace and pinning with 5/8" draw pins and 3/16" spring pins.
- 17. Mount the tow bar according to the tow bar manufacturer's instructions. Install the 8" safety cables to the side of the main receiver portion of the bracket with quick links provided. Attach the other end to the tow vehicle's safety cables and the tow bar.

### Hardware list

- 4- 1/2" x 1 3/4" carriage bolts
- 4- 1/4" x 1" x 2" sq. hole backing plates
- 4- 1/2" lock washers
- 4- 1/2" nuts
- 4- zip ties
- 2- 5/8" draw pins
- 2- 3/16" spring pins
- 2- 8" safety cables
- 2- quick links

### BOLT TORQUE REQUIREMENTS

Note: The torque values represented below are intended as general guidelines. Torque requirements for specific applications may vary. Roadmaster does not warrant this information to be accurate for all applications and disclaims all liability for any claims or damages which may result from its use.

#### STANDARD BOLTS

Thread Size	Grade	Torque
5/16	5	13 ft./lb.
3/8	5	23 ft./lb.
7/16	5	37 ft./lb.
1/2	5	56 ft./lb.
5/8	5	150 ft./lb.

#### METRIC BOLTS

Thread Size	Grade	Plated/Unplated
8mm-1.0	8.8	20 ft./lb. 18 ft./lb.
8mm-1.25	8.8	19 ft./lb. 18 ft./lb.
10mm-1.25	8.8	38 ft./lb. 36 ft./lb.
10mm-1.5	8.8	37 ft./lb. 35 ft./lb.

#### METRIC BOLTS

Thread Size	Grade	Plated/Unplated
12mm-1.25	8.8	70 ft./lb. 65 ft./lb.
12mm-1.5	8.8	66 ft./lb. 61 ft./lb.
12mm-1.75	8.8	65 ft./lb. 60 ft./lb.
14mm-2.0	8.8	104 ft./lb. 97 ft./lb.

All illustrations and specifications contained herein are based on the latest information available at the time of publication approval. ROADMASTER, INC. reserves the right to make changes at any time without notice in material, specification and models or to discontinue models.