

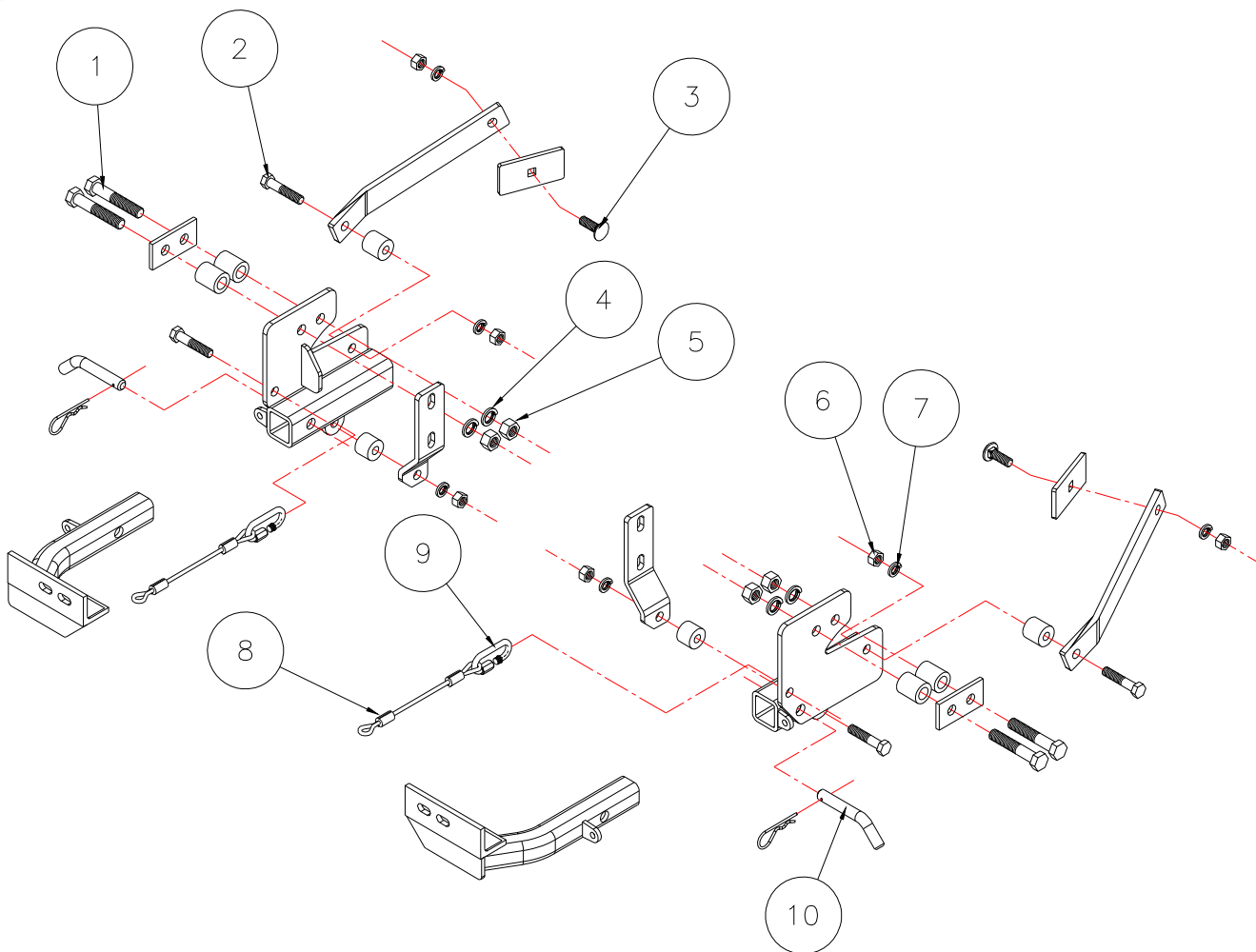


# MOUNTING BRACKET KIT INSTALLATION INSTRUCTIONS

**KIT# 266-1**

11/08/07  
KS

ROADMASTER, Inc. 6110 NE 127th Ave. Vancouver, WA 98682 1-800-669-9690 fax 360-735-9300 www.roadmasterinc.com



Item	Qty	Length	Width	Hardward	Part No.
1	4	3 1/2"	5/8"	5/8" x 3 1/2" BOLT	350163-00
2	4	2 1/2"	1/2"	1/2" x 2 1/2" BOLT	350099-00
3	2	1 1/2"	1/2"	1/2" x 1 1/2" CARRIAGE BOLT	350362-00
4	4		5/8"	LOCK WASHER	350313-00
5	4		5/8"	NUT	350262-00
6	6		1/2"	NUT	350258-00
7	6		1/2"	LOCK WASHER	350309-00
8	2	13"		SAFETY CABLES, 8,000 lb. rated ...	650648-13
9	2			CONNECTORS	200008-00
10	2			DRAW PIN / SPRING PIN	357035-00



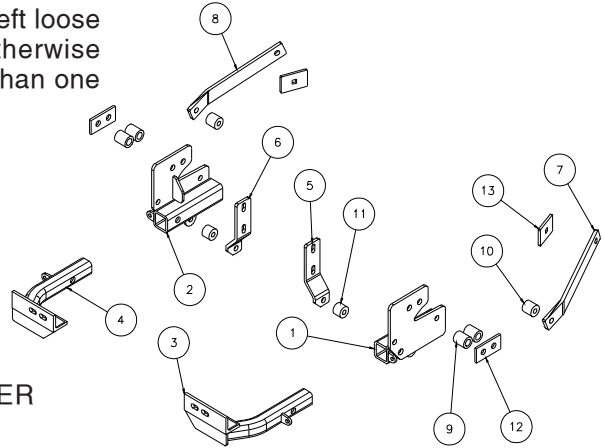
# MOUNTING BRACKET KIT INSTALLATION INSTRUCTIONS

**KIT# 266-1**

11/08/07  
KS

ROADMASTER, Inc. 6110 NE 127th Ave. Vancouver, WA 98682 1-800-669-9690 fax 360-735-9300 www.roadmasterinc.com

**IMPORTANT:** All brackets **must** be assembled with all the bolts left loose for final adjustment & positioning (before tightening) unless otherwise instructed. All bolts **must** be torqued for proper strength. If more than one bolt is used per fastening point, the diagram may only show one.



Item	Qty	Name	Assembly
1	1	C-000559	DRIVER SIDE RECEIVER BRACE WELDMENT
2	1	C-000560	PASSENGER SIDE RECEIVER
3	1	C-000561	DRIVER SIDE ARM BRACE
4	1	C-000562	PASSENGER SIDE ARM
5	1	B-000396	DRIVER SIDE UPPER BRACE
6	1	B-000397	PASSENGER SIDE UPPER BRACE
7	1	B-000398	DRIVER SIDE REAR BRACE
8	1	B-000399	PASSENGER SIDE REAR BRACE
9	4	A-000518	1 1/4" O.D. x 1 1/2" SPACER TUBE
10	2	A-000856	1 1/4" O.D. x 1 1/4" SPACER TUBE
11	2	A-000880	1 1/4" O.D. x 1" SPACER TUBE
12	2	A-000968	BACKING PLATE
13	2	A-000969	SQUARE HOLE BACKING PLATE

ROADMASTER Limited Warranty, including One-Year Conditional Warranty Text and Product Registration Card, in Carton.

## WARNING

- Do not use this document for custom fabrication, as it may not show all parts or structural components. Custom fabrication or an attempt to copy this bracket design could result in loss of the towed vehicle.
- The owner must inspect all mounts and brackets before each use for cracks or other signs of fatigue. Also, inspect the fasteners for proper torque, according to the bolt torque requirements chart on the last page. Failure to do so could result in loss of the towed vehicle.
- The owner must check the manufacturer's instructions for the proper procedure(s) to prepare the vehicle for towing. Some vehicles must be equipped with a transmission lube pump, an axle disconnect, driveline disconnect or free-wheeling hubs before they can be towed. Failure to properly equip the vehicle will cause severe damage to the transmission.
- The installer must read the instructions and use all bolts and parts supplied. Failure to securely fasten the bracket could result in loss of the towed vehicle.
- If running changes were made by the vehicle manufacturer after this bracket was designed, some bolts or other fasteners in the included hardware pack may no longer be the correct size. It is the installer's responsibility to verify that the bracket is securely fastened to the vehicle, and fitted with the correct hardware, to account for these changes. Failure to securely fasten the bracket could result in loss of the towed vehicle.
- If the towed vehicle has been in an accident, it must be properly repaired before attaching the bracket. Do not install the bracket if any structural frame damage is found. Failure to repair the damage may result in the loss of the towed vehicle.

- Some motorhome chassis have such a tight turning radius that you can damage your motorhome, towed vehicle, tow bar or bracket while turning sharply. Before getting on the road, test your turning radius in an empty parking lot. Turning too sharply could result in non-warranty damage to towing system, motorhome and/or towed vehicle.
- Do not back up with the towed vehicle attached or non-warranty damage will occur to your towing system, motorhome and/or towed vehicle.
- The safety cables must connect the towing vehicle to the towed vehicle frame to frame, with the cables crossed, with enough slack for sharp turns. Refer to the cable instructions for proper routing. Failure to leave enough slack in the safety cables, or failure to connect the safety cables frame to frame, will result in the loss of the towed vehicle.
- This bracket is designed for use with ROADMASTER tow bars and ROADMASTER adaptors only. Using this bracket with other brands, without an approved ROADMASTER adaptor, may result in non-warranty damage or injury.
- Upon final installation, the installer must inspect the bracket to ensure adequate clearance, particularly around hoses, air conditioner lines, radiators, etc., or non-warranty damage to the towed vehicle will result.
- This bracket is only warranted for the original installation. Installing a used bracket on another vehicle is not recommended and will void the warranty.

## WARNING

Failure to follow these instructions can result in property damage, personal injury or even death.



# MOUNTING BRACKET KIT INSTALLATION INSTRUCTIONS

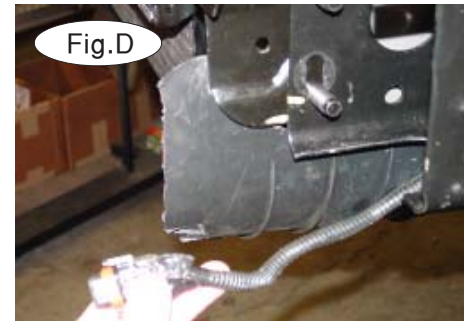
**KIT# 266-1**

11/08/07  
KS

ROADMASTER, Inc. 6110 NE 127th Ave. Vancouver, WA 98682 1-800-669-9690 fax 360-735-9300 www.roadmasterinc.com

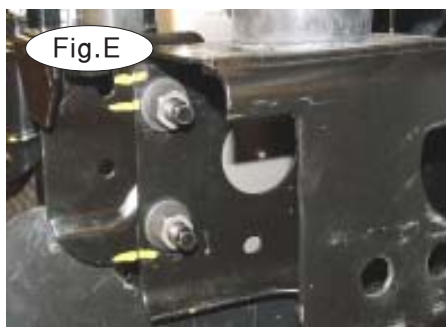
1. This bracket kit is one of our XL series with removable front braces. The kit consists of two rear receiver braces which mount inside the front frame tubes, two inner braces, two rear braces and removable front braces (Fig.A). Everything but the front arm braces install behind the bumper fascia. The front bumper will have to be removed for the installation.

2. Remove three torx screws in each fender well (Fig. B). Disconnect the fog lights, if the vehicle is so equipped (Fig.D). Then, remove four bolts, two on the top of each frame tube (Fig.C). Now, remove two bolts on the bumper side braces on each side. These are located on the sides of the frame tubes.



3. Use two screwdrivers to pop the plastic fasteners loose on the bottom radiator flap, pull free and set aside.  
4. Mark the frame where the bumper brackets are located so that the bumper can be repositioned to the same spot. Remove the shoulder nuts inside each frame tube holding the bumper brackets. This is where the new inside braces will be mounted (Fig.E).

5. Working on one side at a time, locate a slotted hole about one foot back from the front of the frame. Fishwire a 1/2" x 1 1/2" carriage bolt and 1/4" x 2" x 3" backing plate through the front of the frame into the slotted hole (Fig.F,G).



6. Bolt through the rear brace with a 1/2" nut and lock washer (Fig.H).  
7. Enlarge the mounting holes in a bumper side brace then assemble the side brace, two 5/8" x 3 1/2" bolts, and spacers as shown in (Fig.I).  
8. Bolt through the receiver brace and frame and finish with 1/2" nuts and lock washers (Fig.J).

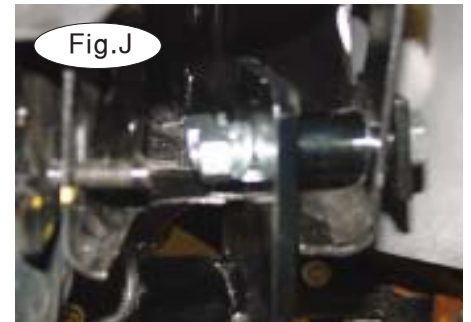


# MOUNTING BRACKET KIT INSTALLATION INSTRUCTIONS

**KIT# 266-1**

11/08/07  
KS

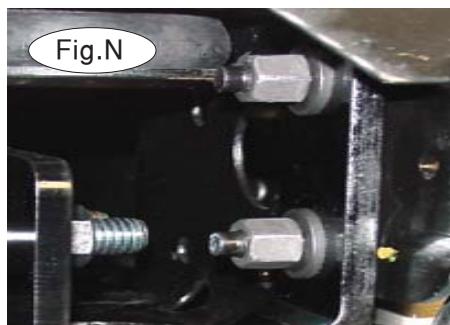
ROADMASTER, Inc. 6110 NE 127th Ave. Vancouver, WA 98682 1-800-669-9690 fax 360-735-9300 www.roadmasterinc.com



- Put the inner brace over the bumper bracket bolts and secure with the original shoulder nuts as shown (Fig.K).
- Bolt through the bottom of the inner brace and receiver brace with a  $\frac{1}{2}$ " x  $2\frac{1}{2}$ " bolt,  $1\frac{1}{4}$ " spacer, lock washer and nut (Fig.L).
- Bolt the receiver brace to the rear brace with  $\frac{1}{2}$ " x  $2\frac{1}{2}$ " bolt,  $1\frac{1}{4}$ " spacer flat washers, lock washer and nut (Fig.M).



- Repeat steps 2 through 11 for the remaining side.
- Level and align the receiver braces with each other and tighten the two outside frame bolts (Fig.N) on each side.
- Align the bumper braces to their original marks and tighten the shoulder nuts.
- Torque all mounting bolts to the specifications on the last page.
- Replace the bumper and fascia, reversing steps 2 to 3.
- Insert the front arm braces and secure with  $\frac{5}{8}$ " draw pins and safety pins (Fig.O).
- Install the tow bar according to the manufacturer's instructions and torque all bolts to the specifications at the end of these instructions.
- Attach one end of the 13" safety cables to the front holes on the receiver braces and the other end to the tow vehicle's safety cables and the tow bar.





# MOUNTING BRACKET KIT INSTALLATION INSTRUCTIONS

**KIT# 266-1**

11/08/07  
KS

ROADMASTER, Inc. 6110 NE 127th Ave. Vancouver, WA 98682 1-800-669-9690 fax 360-735-9300 www.roadmasterinc.com

## BOLT TORQUE REQUIREMENTS

Note: The torque values represented below are intended as general guidelines. Torque requirements for specific applications may vary. Roadmaster does not warrant this information to be accurate for all applications and disclaims all liability for any claims or damages which may result from its use.

### STANDARD BOLTS

Thread Size	Grade	Torque
5/16	5	13 ft./lb.
3/8	5	23 ft./lb.
7/16	5	37 ft./lb.
1/2	5	56 ft./lb.
5/8	5	150 ft./lb.

### METRIC BOLTS

Thread Size	Grade	Plated / Unplated
8mm-1.0	8.8	20 ft./lb. 18 ft./lb.
8mm-1.25	8.8	19 ft./lb. 18 ft./lb.
10mm-1.25	8.8	38 ft./lb. 36 ft./lb.
10mm-1.5	8.8	37 ft./lb. 35 ft./lb.

### METRIC BOLTS

Thread Size	Grade	Plated / Unplated
12mm-1.25	8.8	70 ft./lb. 65 ft./lb.
12mm-1.5	8.8	66 ft./lb. 61 ft./lb.
12mm-1.75	8.8	65 ft./lb. 60 ft./lb.
14mm-2.0	8.8	104 ft./lb. 97 ft./lb.

All illustrations and specifications contained herein are based on the latest information available at the time of publication approval. ROADMASTER, INC. reserves the right to make changes at any time without notice in material, specification and models or to discontinue models.