

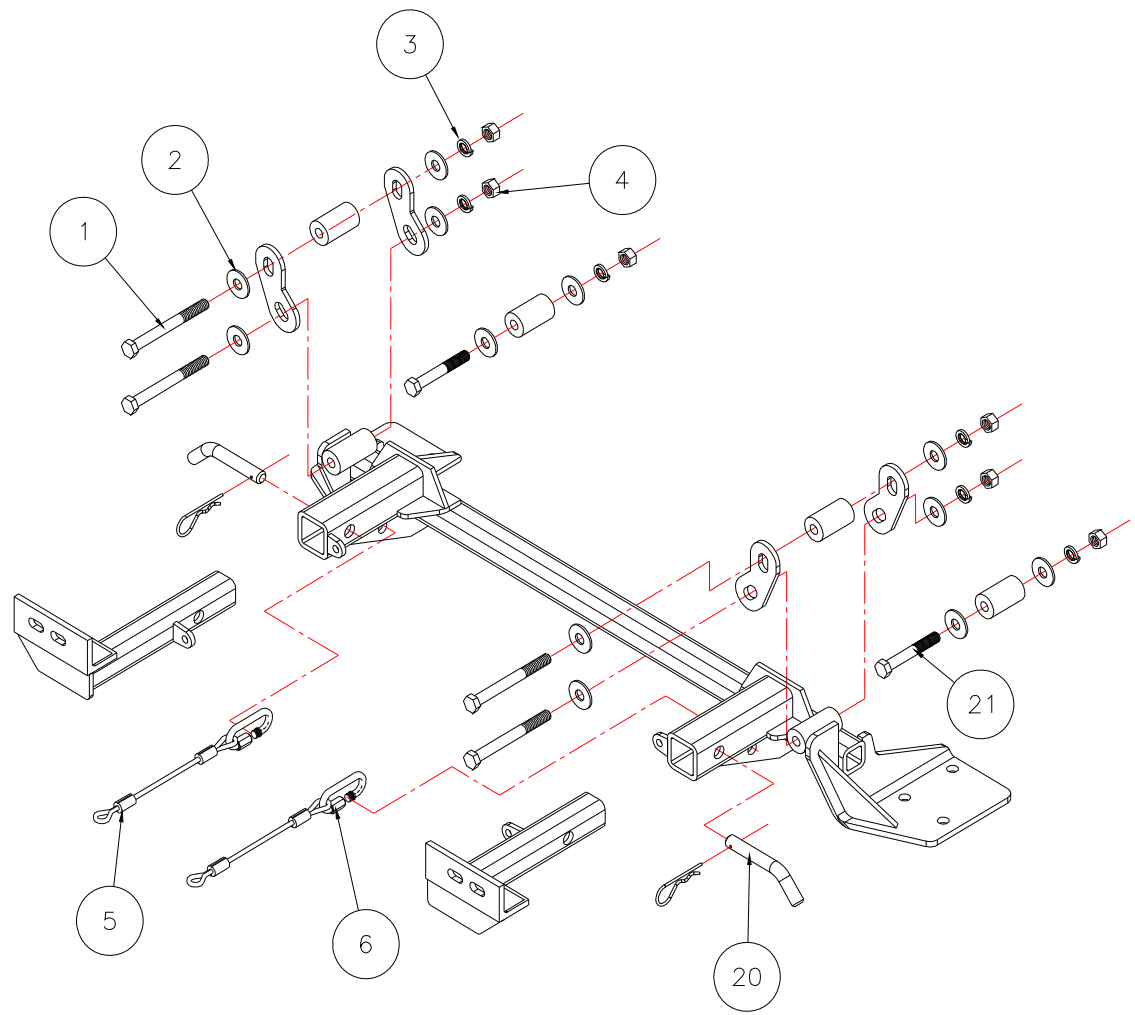


# BASEPLATE KIT INSTALLATION INSTRUCTIONS

**KIT# 3117-1**

1/08/08  
KS

ROADMASTER, Inc. 6110 NE 127th Ave. Vancouver, WA 98682 1-800-669-9690 fax 360-735-9300 www.roadmasterinc.com



Item	Qty	Length	Width	Hardware	Part No.
1	4	4"	1/2"	1/2" x 4" BOLT	350105-00
2	12		1/2"	1/2" FLAT WASHER	350308-00
3	6		1/2"	1/2" LOCK WASHER	350309-00
4	6		1/2"	1/2" NUT	350258-00
5	2	10"		10" SAFETY CABLE	500646-10
6	2			CABLE CONNECTOR	200008-00
20	2			DRAW PIN/SPRING PIN	357035-00
21	2	3 1/2"	1/2"	BOLT	350103-00

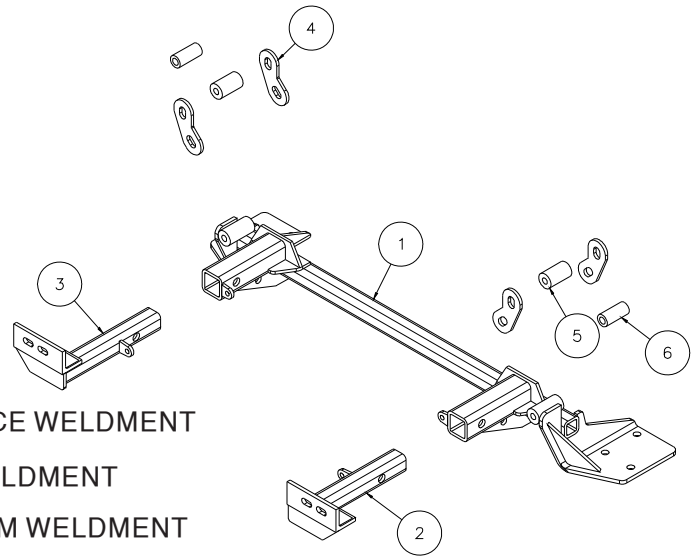


# BASEPLATE KIT INSTALLATION INSTRUCTIONS

**KIT# 3117-1**

1/08/08  
KS

ROADMASTER, Inc. 6110 NE 127th Ave. Vancouver, WA 98682 1-800-669-9690 fax 360-735-9300 www.roadmasterinc.com



Item	Qty	Part No.	Assembly
1	1	C-000620	MAIN RECEIVER BRACE WELDMENT
2	1	C-000621	DRIVER SIDE ARM WELDMENT
3	1	C-000622	PASSENGER SIDE ARM WELDMENT
4	4	A-000959	BACKING PLATE
5	2	A-000606	ROUND TUBE - 1 1/4" DIA x 2 1/8" LONG

**IMPORTANT:** All baseplates **must** be assembled with all the bolts left loose for final adjustment and positioning (before tightening) unless otherwise instructed. All bolts **must** be torqued for proper strength. If more than one bolt is used per fastening point, the diagram may only show one. Use flat washers over all slotted holes and lock washers on all fasteners.

## WARNING

Failure to heed these warnings or follow the installation instructions may result in a voided warranty, loss of towed vehicle, personal injury or death.

- Do not weld or modify this baseplate or its components. Welding or modification will void the warranty.
- Do not use this document as a basis to design/fabricate a baseplate, as it may not show all parts or structural components.
- We strongly recommend professional installation.
- If the towed vehicle has been in an accident, it must be properly repaired before attaching the baseplate. Do not install the baseplate if any structural frame damage is found.
- The installer must use all bolts and parts supplied. If running changes were made by the vehicle manufacturer after this kit was designed, some bolts or other fasteners may no longer be the correct size. It is the installer's responsibility to verify this kit is securely fastened to the vehicle.
- Use Loctite® Red on all bolts used to secure this baseplate. Torque all bolts to the specifications found at the end of these instructions. Do not over-torque the bolts or failure may occur.
- The installer must inspect the baseplate to ensure adequate clearance, particularly around hoses, air conditioner lines, radiators, etc. or non-warranty failure may result.
- Roadmaster manufactures many styles of baseplates. If your baseplate has removable arms, they must be removed before driving the vehicle, unless the arms can be pinned or padlocked in place. If not secured, the arms could vibrate out.
- Some motorhome chassis have such a tight turning radius that you can damage your motorhome, towed vehicle, tow bar or baseplate while turning sharply. Before getting on the road, test your turning radius in an empty parking lot. Turning too sharply could

result in non-warranty damage to your towing system, motorhome and/or towed vehicle.

- Do not back up with the towed vehicle attached or non-warranty damage will occur to your towing system or vehicles.
- The safety cables must connect the towing vehicle to the towed vehicle frame to frame, with the cables crossed, with enough slack for sharp turns. See cable instructions for proper routing. Failure to do so will result in non-warranty damage and/or the loss of the towed vehicle.
- This kit is designed for use with ROADMASTER tow bars and ROADMASTER adapters only. Using this kit with other brands, without an approved ROADMASTER adapter, may result in non-warranty damage or injury.
- Receiver extensions and out-of-level towing situations of 3 inches or more. This can cause the system to swing much higher and lower, causing excessive strain on the tow bar, baseplate and frame. That can cause the towing system to fail, causing property damage, personal injury or even death. If you must use a receiver extension or drop hitch to tow, it will reduce your receiver's weight capacity by 1/3 to avoid damaging your system. Never use more than one extension and/or drop hitch, as this will void your warranty.
- Every 3,000 miles, the owner must inspect all mounting points for cracks or fatigue, and check the fasteners for proper torque, according to the bolt torque requirements chart on the last page of these instructions.
- The owner must follow the vehicle manufacturer's instructions to prepare the vehicle for towing. Failure to do so may cause severe damage to the vehicle.
- This baseplate is only warranted for the original installation. Installing a used baseplate on another vehicle is not recommended and will void the warranty.



# BASEPLATE KIT INSTALLATION INSTRUCTIONS

**KIT# 3117-1**

1/08/08  
KS

ROADMASTER, Inc. 6110 NE 127th Ave. Vancouver, WA 98682 1-800-669-9690 fax 360-735-9300 www.roadmasterinc.com

This bracket kit is one of our XL series, which is designed to be partly removable. The kit consists of the main receiver brace, side braces, lower braces, front braces and a hardware pack. The main receiver brace bolts to the side braces, which are bolted inside frame tubes on each side. The lower braces connect the main receiver brace to the lower sub frame mounts under the radiator cross member. The front braces insert into the receivers on each side (Fig.A). Start by laying the kit out according to the illustration. This will give you a visual idea of how the kit installs and also confirm that the kit components are present and accounted for.



2. Starting at the top of the fascia, remove the top grill cover (7 plastic fasteners) (Fig.B) then remove two grill support bolts (Fig.C). Now remove two phillips screws holding the grille and pull forward and up to remove (Fig. D)



3. Remove the headlights (two 13mm head bolts) in each light. Set the lights aside for now (Fig.E,F).

4. Go through the headlight cavity and remove two nuts from the fender, fascia junction on each side (Fig.G). Remove a 10mm (head) screw from the top of the bumper core on each side (Fig.H).





# BASEPLATE KIT INSTALLATION INSTRUCTIONS

**KIT# 3117-1**

1/08/08  
KS

ROADMASTER, Inc. 6110 NE 127th Ave. Vancouver, WA 98682 1-800-669-9690 fax 360-735-9300 www.roadmasterinc.com



Fig.I



Fig.J



Fig.K

5. Move to the inside of the fender wells and remove two 7mm (head) screws (Fig.I), then to the bottom of the fascia to remove three more (Fig.J). Go to the inside of the fenderwells and remove three more fasteners on the driver's side (Fig.K) and four more and a plastic fastener on the passenger side (Fig.L). Pull the fender well liners back to expose and remove a 10mm (head) fascia fender junction bolt (Fig.M).

6. Disconnect the marker lights (Fig.N) then pull forward to remove the fascia (Fig.O). Now remove the black louver panels located below the bumper core on each side (Fig.P).



Fig.L



Fig.M



Fig.N



Fig.O



Fig.P



Fig.Q

7. Before proceeding, support or secure the lower radiator support to the frame so that it can't drop when the lower support bolts are removed (Fig.Q).

8. Now, remove three 13mm (head) bolts on each side of the frame (Fig.R,S).



Fig.R



Fig.S



# BASEPLATE KIT INSTALLATION INSTRUCTIONS

**KIT# 3117-1**

1/08/08  
KS

ROADMASTER, Inc. 6110 NE 127th Ave. Vancouver, WA 98682 1-800-669-9690 fax 360-735-9300 www.roadmasterinc.com

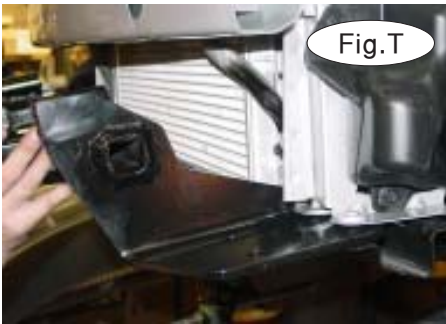


Fig.T

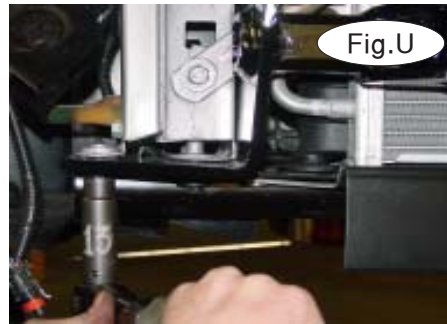


Fig.U

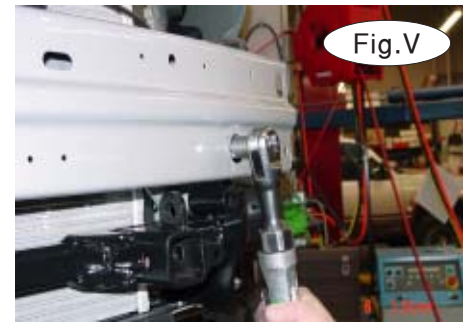


Fig.V

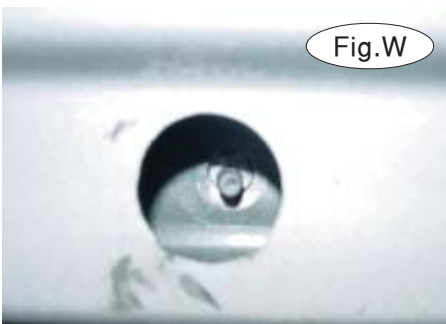


Fig.W



Fig.X

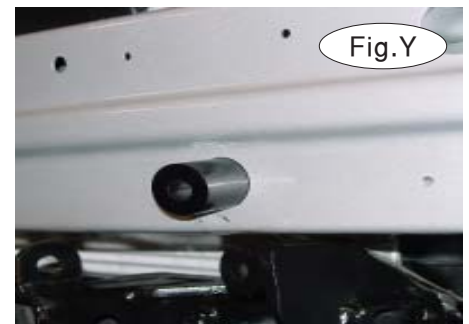


Fig.Y

9. Lower the radiator support enough to slip the receiver braces rear mounts between the frame and the radiator support. *Note:* don't let the radiator support drop too far (Fig.T).

10. Bolt in place with the existing bolts removed in step 8 and tighten to hold (Fig.U).

11. Find the lower bumper core stud on each side and remove the nuts. Now knock them out the back of the frame with a large punch (Fig.V,W,X).

12. Insert 2 1/8" pipe spacers in the large bumper core holes and bolt through the spacers, upper brace plates and frame with 1/2" x 4" bolts, flat washers, lock washers and nuts (Fig.Y,Z,AA).



Fig.Z



Fig.AA



Fig.BB

13. Locate existing holes in the end of the bumper core and use these holes as a drill guide to drill through the front and back of the bumper core with a 17/32" drill bit. Insert 2 1/4" pipe spacers in the end of the bumper core and bolt through with 1/2" x 3 1/2" bolts, flat washers, lock washers and nuts (Fig.BB,CC).



Fig.CC



# BASEPLATE KIT INSTALLATION INSTRUCTIONS

**KIT# 3117-1**

1/08/08  
KS

ROADMASTER, Inc. 6110 NE 127th Ave. Vancouver, WA 98682 1-800-669-9690 fax 360-735-9300 www.roadmasterinc.com

14. Now, torque all mounting bolts to the specifications below.
15. Trim the bumper core foam as needed to fit around the braces and refit (Fig.DD).
16. Reverse steps 4 through 6 to refit the fascia.
17. Install the front braces and secure with 5/8" draw pins and 3/16" spring pins (Fig.EE).
18. Install the safety cables and connectors.
19. Install the tow bar according to the manufacturer's instructions and torque all mounting bolts to the specifications below.
20. Attach the ends of the 10" safety cables to front holes on each side of the receiver brace with the included cable connectors. Connect the other end to the tow vehicle's safety cables and tow bar.

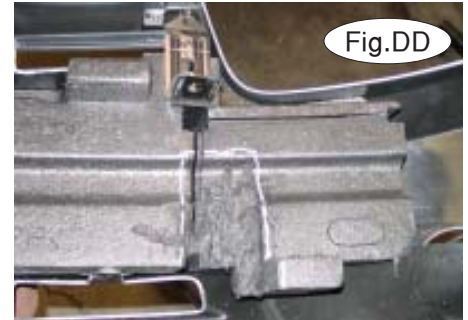


Fig.DD

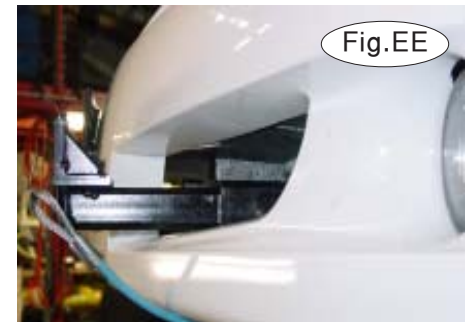


Fig.EE

## BOLT TORQUE REQUIREMENTS

Note: The torque values represented below are intended as general guidelines. Torque requirements for specific applications may vary. Roadmaster does not warrant this information to be accurate for all applications and disclaims all liability for any claims or damages which may result from its use.

STANDARD BOLTS			METRIC BOLTS			METRIC BOLTS		
Thread Size	Grade	Torque	Thread Size	Grade	Plated/Unplated	Thread Size	Grade	Plated/Unplated
5/16	5	13 ft./lb.	8mm-1.0	8.8	20 ft./lb. 18 ft./lb.	12mm-1.25	8.8	70 ft./lb. 65 ft./lb.
3/8	5	23 ft./lb.	8mm-1.25	8.8	19 ft./lb. 18 ft./lb.	12mm-1.5	8.8	66 ft./lb. 61 ft./lb.
7/16	5	37 ft./lb.	10mm-1.25	8.8	38 ft./lb. 36 ft./lb.	12mm-1.75	8.8	65 ft./lb. 60 ft./lb.
1/2	5	56 ft./lb.	10mm-1.5	8.8	37 ft./lb. 35 ft./lb.	14mm-2.0	8.8	104 ft./lb. 97 ft./lb.
5/8	5	150 ft./lb.						

All illustrations and specifications contained herein are based on the latest information available at the time of publication approval. ROADMASTER, INC. reserves the right to make changes at any time without notice in material, specification and models or to discontinue models.