

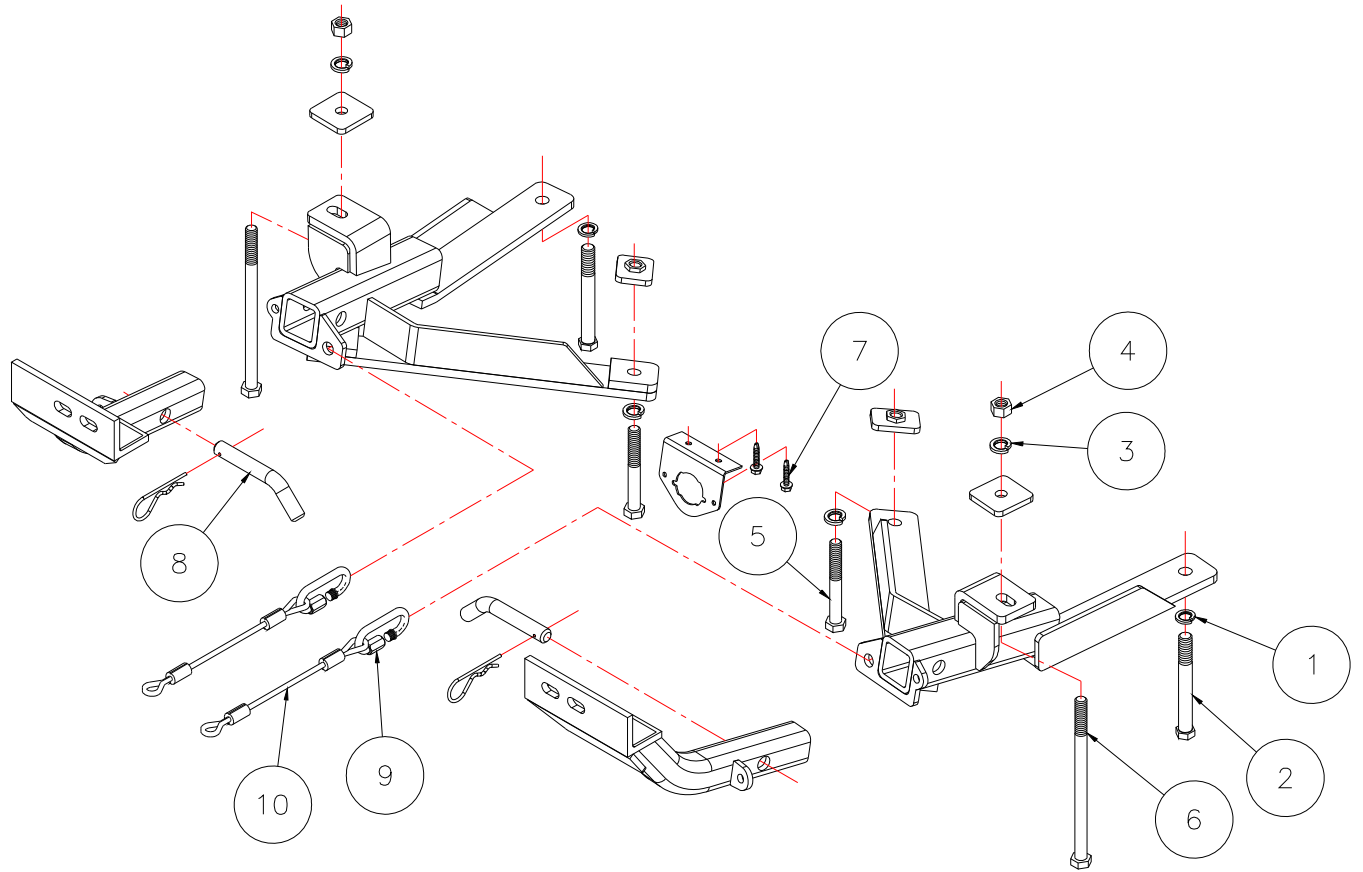


BASEPLATE KIT INSTALLATION INSTRUCTIONS

KIT# 3127-1

08/09/04

ROADMASTER, Inc. 6110 NE 127th Ave. Vancouver, WA 98682 1-800-669-9690 fax 360-735-9300 www.roadmasterinc.com



Item	Qty.	Length	Width	Description	Part #
1	2		14mm	LOCK WASHER	355740-00
2	2	120mm	14mm	M14 x 2.0 x 120mm BOLT	355910-40
3	4		1/2"	LOCK WASHER	350309-00
4	4		1/2"	NUT	350266-00
5	2	4"	1/2"	1/2" x 4" BOLT	350105-00
6	2	8"	1/2"	1/2" x 8"	350113-00
7	2	1 1/4"		#10 x 1 1/4"	357247-00
8	2		5/8"	DRAW PIN, SPRING PIN	357035-00
9	2			CABLE CONNECTOR	200008-00
10	2	8"		SAFETY CABLE	500646-08

ROADMASTER, INC.



BASEPLATE KIT INSTALLATION INSTRUCTIONS

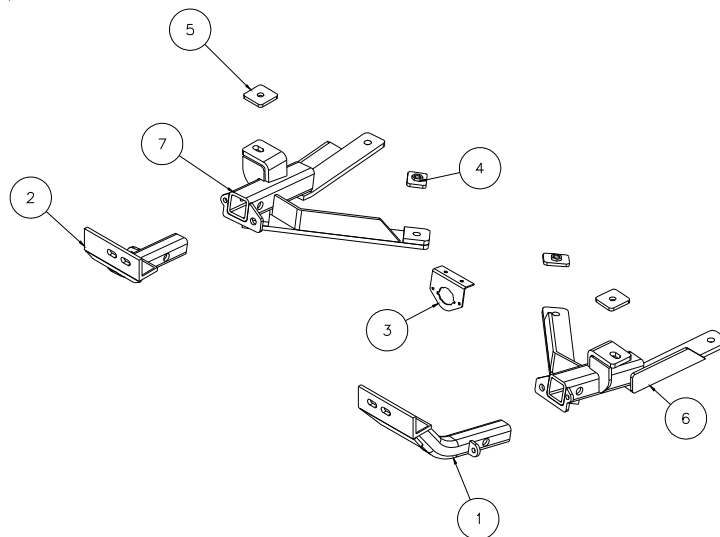
KIT# 3127-1

08/09/04

ROADMASTER, Inc. 6110 NE 127th Ave. Vancouver, WA 98682 1-800-669-9690 fax 360-735-9300 www.roadmasterinc.com

IMPORTANT: All brackets **must** be assembled with all the bolts left loose for final adjustment & positioning (before tightening) unless otherwise instructed. All bolts **must** be torqued for proper strength. If more than one bolt is used per fastening point, the diagram may only show one.

- Use flat washers over all slotted holes
- Use lock washers on all fasteners



Item	Qty.	Part #	Description
1	1	C-001008	DRIVER SIDE ARM TUBE
2	1	C-001009	PASSENGER SIDE ARM TUBE
3	1	B-000045	WIRE PLUG CONNECTOR BRACKET
4	2	C-001010	THREADED BACKING PLATE WITH 1/2" NUT
5	2	A-001066	1/4" x 2" x 2" BACKING PLATE
6	1	C-001006	DRIVER SIDE RECEIVER BRACE WELDMENT
7	1	C-001007	PASSENGER SIDE RECEIVER BRACE WELDMENT

WARNING

Failure to follow these instructions can result in property damage, personal injury or even death.

- Installation of most mounting brackets requires moderate mechanical aptitude and skills. We strongly recommend professional installation by an experienced installer.
- The installer must read the instructions and use all bolts and parts supplied. Failure to do so could result in loss of the towed vehicle.
- Use Loctite® Red on all bolts used for mounting this bracket.
- Do not use this document for custom fabrication, as it may not show all parts or structural components. Custom fabrication or an attempt to copy this bracket design could result in loss of the towed vehicle.
- Every 3,000 miles, the owner must inspect the fasteners for proper torque, according to the bolt torque requirements chart on the last page of these instructions. The owner must also inspect all mounts and brackets for cracks or other signs of fatigue every 3,000 miles. Failure to do so could result in loss of the towed vehicle.
- The owner must check the vehicle manufacturer's instructions for the proper procedure(s) to prepare the vehicle for towing. Some vehicles must be equipped with a transmission lube pump, an axle disconnect, driveline disconnect or free-wheeling hubs before they can be towed. Failure to properly equip the vehicle will cause severe damage to the transmission.
- If running changes were made by the vehicle manufacturer after this bracket was designed, some bolts or other fasteners in the hardware pack may no longer be the correct size. It is the installer's responsibility to verify that the bracket is securely fastened to the vehicle and fitted with the correct hardware to account for these changes. Failure to securely fasten the bracket could result in loss of the towed vehicle.
- If the towed vehicle has been in an accident, it must be properly repaired before attaching the bracket. Do not install the bracket if any structural frame damage is found. Failure to repair the damage could result in the loss of the towed vehicle.
- Some motorhome chassis have such a tight turning radius that you can damage your motorhome, towed vehicle, tow bar or bracket while turning sharply. Before getting on the road, test your turning radius in an empty parking lot. Turning too sharply could result in non-warranty damage to towing system, motorhome and/or towed vehicle.
- Do not back up with the towed vehicle attached or non-warranty damage will occur to your towing system, motorhome and/or towed vehicle.
- The safety cables must connect the towing vehicle to the towed vehicle frame to frame, with the cables crossed, with enough slack for sharp turns. Refer to the cable instructions for proper routing. Failure to leave enough slack in the safety cables, or failure to connect the safety cables frame to frame, will result in the loss of the towed vehicle.
- This bracket is designed for use with ROADMASTER tow bars and ROADMASTER adaptors only. Using this bracket with other brands, without an approved ROADMASTER adaptor, may result in non-warranty damage or injury.
- Upon final installation, the installer must inspect the bracket to ensure adequate clearance, particularly around hoses, air conditioner lines, radiators, etc., or non-warranty damage to the towed vehicle will result.
- This bracket is only warranted for the original installation. Installing a used bracket on another vehicle is not recommended and will void the warranty.

ROADMASTER, INC.



BASEPLATE KIT INSTALLATION INSTRUCTIONS

KIT# 3127-1

08/09/04

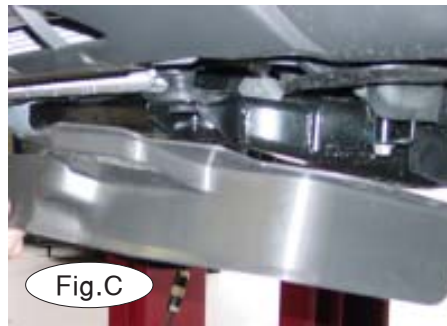
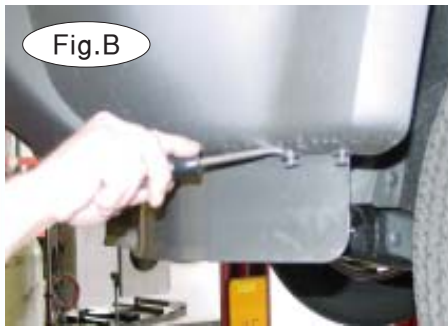
ROADMASTER, Inc. 6110 NE 127th Ave. Vancouver, WA 98682 1-800-669-9690 fax 360-735-9300 www.roadmasterinc.com

This bracket kit is one of our XL series, which is designed to be partly removable. The kit consists of two main receiver braces, front arm braces, and a hardware pack. The main receiver brace mounts under the front bumper facia to the frame and sub frame on each side (Fig.A). The front braces insert into the receivers on each side. Start by laying the kit out according to the illustration. This will give you a visual idea of how the kit installs and also confirm that the kit components are present and accounted for.



1. **Important:** please use all supplied bolts and parts and read all instructions carefully before beginning this installation. The majority of questions you may have can be answered within the text, and proper installation will ensure safe and secure travel. Now, begin the installation. Remove 13 plastic fasteners from the lower air dam and then remove the air dam (Fig.B,C).

2. Working on one side at a time, remove the front sub frame bolt (Fig.D).



3. Hold a receiver brace under the sub frame as shown (Fig.E) and bolt through the rear mounting hole with a 14mm x 2.0 x 120mm bolt, lock washer and flat washer (Fig.F).



4. Tighten to hold the receiver brace in position .

5. On the lower sub frame near the inner mounting plates on the receiver braces locate existing holes and drill up through the top. Bolt through the inside mounting hole up through the middle of the sub frame using a 1/2" x 4" bolt, lock washer and threaded backing plate. Hand tighten for now.

6. Repeat steps 3 through 6 for the remaining side.

7. Now install wire plug bracket using the supplied 10 x 1 1/4" self tapping screws (Fig.G).



8. Align the braces and tighten in place. *Note:* the braces should now be aligned and even across the front and the remaining front mounting holes in the receiver braces should be lined up with existing holes in the bottom of the frame on each side.

9. Using the receiver braces as drill templates, enlarge the existing holes in the bottom of the frames and drill all the way through the frame with a long 17/32" drill bit (Fig.H). *Note:* use a piece of metal or plate on top of the frame to protect the wiring harness and other plumbing .

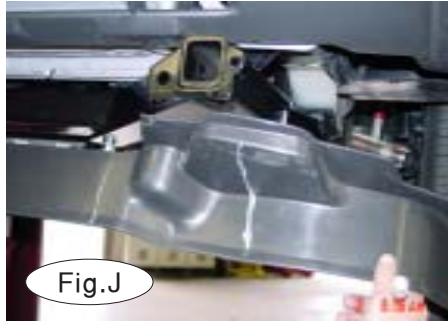
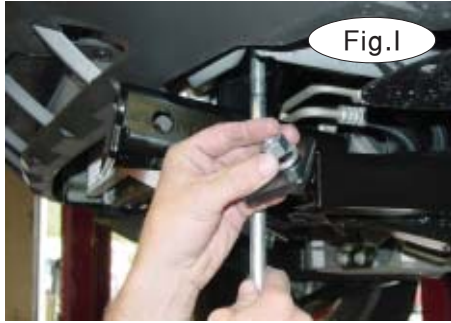
ROADMASTER, INC.



BASEPLATE KIT INSTALLATION INSTRUCTIONS

KIT# 3127-1
08/09/04

ROADMASTER, Inc. 6110 NE 127th Ave. Vancouver, WA 98682 1-800-669-9690 fax 360-735-9300 www.roadmasterinc.com



10. Bolt through the mounting holes in the receiver braces and the frame with 1/2" x 8" bolts, 1/4" x 2" x 2" backing plates, lock washers and nuts (Fig.I).

11. Torque all mounting bolts to the torque specifications below.

12. At this time the lower air dam can be cut to fit around the braces and reinstalled reversing step 1 or left off for future replacement if the braces are ever removed. (Fig.J,K) shows the air dam as it would fit if installed and (Fig.L) shows the installation minus the lower air dam.

13. Install the front braces in the receiver tubes and pin from the top with 5/8" draw pins and spring pins.

14. Install the tow bar according to the manufacturer's instructions and torque all mounting bolts to the specifications below.

15. Attach the ends of the 8" safety cables to front holes on each side of the receiver brace with the included cable connectors. Connect the other end to the tow vehicle's safety cables and the tow bar (Fig.N).



BOLT TORQUE REQUIREMENTS

Note: The torque values represented below are intended as general guidelines. Torque requirements for specific applications may vary. Roadmaster does not warrant this information to be accurate for all applications and disclaims all liability for any claims or damages which may result from its use.

STANDARD BOLTS			METRIC BOLTS		METRIC BOLTS			
Thread Size	Grade	Torque	Thread Size	Grade	Plated/Unplated	Thread Size	Grade	Plated/Unplated
5/16	5	13 ft./lb.	8mm-1.0	8.8	20 ft./lb. 18 ft./lb.	12mm-1.25	8.8	70 ft./lb. 65 ft./lb.
3/8	5	23 ft./lb.	8mm-1.25	8.8	19 ft./lb. 18 ft./lb.	12mm-1.5	8.8	66 ft./lb. 61 ft./lb.
7/16	5	37 ft./lb.	10mm-1.25	8.8	38 ft./lb. 36 ft./lb.	12mm-1.75	8.8	65 ft./lb. 60 ft./lb.
1/2	5	56 ft./lb.	10mm-1.5	8.8	37 ft./lb. 35 ft./lb.	14mm-2.0	8.8	104 ft./lb. 97 ft./lb.
5/8	5	150 ft./lb.						

All illustrations and specifications contained herein are based on the latest information available at the time of publication approval. ROADMASTER, INC. reserves the right to make changes at any time without notice in material, specification and models or to discontinue models.