

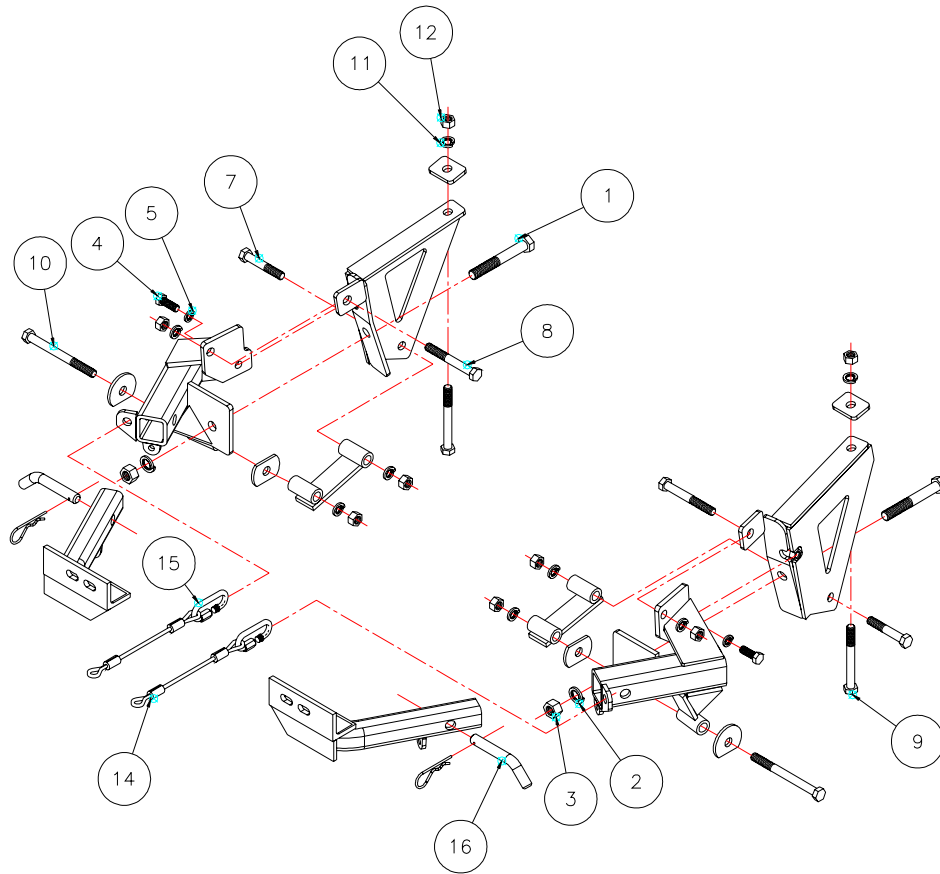


MOUNTING BRACKET KIT INSTALLATION INSTRUCTIONS

KIT# 3129-1

09/07/04
RV

ROADMASTER, Inc. 5602 N.E. Skyport Way Portland, OR 97218 1-800-669-9690 Fax (503) 288-8900 www.roadmasterinc.com



Item	Qty	Length	Width	Description
1	2	4 1/2"	5/8"	5/8" x 4 1/2" BOLT
2	2		5/8"	LOCKWASHER
3	2		5/8"	NUT
4	2	1 1/4"	7/16"	7/16" x 1 1/4" BOLT
5	2		7/16"	LOCKWASHER
7	2	3"	1/2"	1/2" x 3" BOLT
8	2	4"	1/2"	1/2" x 4" BOLT
9	2	4 1/2"	1/2"	1/2" x 4 1/2" BOLT
10	2	5 1/2"	1/2"	1/2" x 5 1/2" BOLT
11	8		1/2"	LOCKWASHER
12	8		1/2"	NUT
13	4	7"		BLACK ZIP TIE
15	2	10"		SAFETY CABLE
16	2			CABLE CONNECTOR
17	2		5/8"	DRAW PINS, SPRING PINS



MOUNTING BRACKET KIT INSTALLATION INSTRUCTIONS

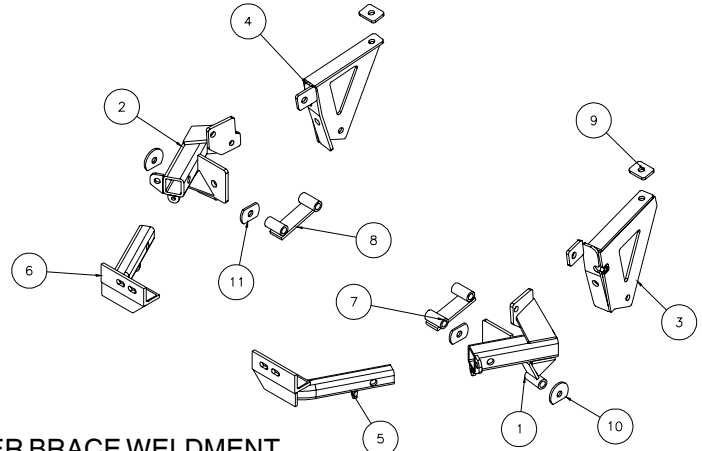
KIT# 3129-1

09/07/04
RV

ROADMASTER, Inc. 5602 N.E. Skyport Way Portland, OR 97218 1-800-669-9690 Fax (503) 288-8900 www.roadmasterinc.com

IMPORTANT: All brackets **must** be assembled with all the bolts left loose for final adjustment & positioning (before tightening) unless otherwise instructed. All bolts **must** be torqued for proper strength. If more than one bolt is used per fastening point, the diagram may only show one.

- Use flat washers over all slotted holes
- Use lock washers on all fasteners



Item	Qty.	Part #	Description
1	1	C-001074	DRIVER SIDE RECEIVER BRACE WELDMENT
2	1	C-001075	PASSENGER SIDE RECEIVER BRACE WELDMENT
3	1	C-001076	DRIVER SIDE BUMPER CORE BRACE
4	1	C-001077	PASSENGER SIDE BUMPER CORE BRACE
5	1	C-001078	DRIVER SIDE ARM TUBE WELDMENT
6	1	C-001079	PASSENGER SIDE ARM TUBE WELDMENT
7	1	C-001085	DRIVER SIDE THREADED BACKING PLATE
8	1	C-001086	PASSENGER SIDE THREADED BACKING PLATE
9	2	A-000122	2" x 1 1/2" BACKING PLATE
10	2	A-001511	CLIPPED PLATE WASHER
11	2	A-001759	CLIPPED PLATE WASHER

ROADMASTER Limited Warranty, including One-Year Conditional Warranty Text and Product Registration Card, in Carton.



WARNING

- Do not use this document for custom fabrication as it may not show all parts or structural components.
- ROADMASTER will not be responsible for any damage or injury resulting from any modification or alteration.
- The owner must inspect all mounts and brackets before each use for cracks or other signs of fatigue. Also, inspect the fasteners for proper torque, according to the torque chart.
- The owner must check the manufacturer's instructions for the proper procedure(s) to prepare the vehicle for towing. Some vehicles must be equipped with a transmission lube pump, an axle disconnect, driveline disconnect or free-wheeling hubs before they can be towed. Failure to properly equip the vehicle will cause severe damage to the transmission.
- The installer must read the instructions and use all bolts and parts supplied.
- If the towed vehicle has been in an accident, it must be properly repaired before attaching the brackets. Do not install the brackets if any structural frame damage is found. Failure to repair the damage may result in loss of your towed vehicle.
- Some motorhome chassis have such a tight turning radius that you can damage your motorhome, towed vehicle or tow bar while turning

sharply. Before getting on the road, test your turning radius in an empty parking lot. Damage that results from turning too sharply is not covered by warranty.

- The driver must not back up the motorhome with the towed vehicle attached or non-warranty damage will occur to your towing system or towed vehicle.
- The safety cables must connect the towing vehicle to the towed vehicle frame to frame, with the cables crossed. Refer to the cable instructions for proper routing.
- Make sure there is enough slack in the safety cables at the motorhome to allow for sharp turns.
- Use caution when handling the tow bar — if your hands, fingers or any part of your body are caught between moving components, they can be pinched, cut or otherwise injured.
- This bracket is designed for use with ROADMASTER tow bars and ROADMASTER adaptors. Using this bracket with other brands, without an approved ROADMASTER adaptor, may result in non-warranty damage or injury.
- Important! This bracket is only warranted for the original installation. Installing a used bracket on another vehicle is not recommended and will void the warranty.
- Upon final installation, the installer must inspect the bracket to ensure adequate clearance, particularly around hoses, AC lines, radiators, etc., or non-warranty damage will result.



WARNING

Failure to follow these instructions can result in property damage, personal injury or even death.



MOUNTING BRACKET KIT INSTALLATION INSTRUCTIONS

KIT# 3129-1

09/07/04
RV

ROADMASTER, Inc. 5602 N.E. Skyport Way Portland, OR 97218 1-800-669-9690 Fax (503) 288-8900 www.roadmasterinc.com

1. This is one of our XL series brackets, which allows the visible front portion of the bracket to be easily removed from the front of the vehicle (Fig.A). The bracket consists of two front braces, two receiver braces, two rear braces, two lower braces, and a hardware pack. Before starting the installation, lay out the kit components in order, starting with step two. This will give you a visual idea of how the components work, and will also confirm that everything is present and accounted for.



2. Start by removing the three Phillips head screws (Fig.B) and the two plastic fasteners (Fig.C) from the core support cover. Then, remove the core support cover (Fig.D).



3. Remove three more plastic fasteners from the top of the fascia (Fig.E).

4. Remove the three 10mm bolts from each headlight (Fig.F). Then, pull the headlight forward, unplug the headlight, and remove it (Fig.G).



5. Remove the two 8mm bolts from the marker lights, then the one plastic fastener (Fig.H) from the bottom of the marker lights (Fig.I). Carefully pull the marker lights away, but do not fully remove them (Fig.J).





MOUNTING BRACKET KIT INSTALLATION INSTRUCTIONS

KIT# 3129-1

09/07/04
RV

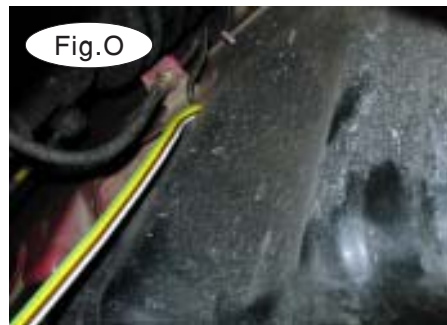
ROADMASTER, Inc. 5602 N.E. Skyport Way Portland, OR 97218 1-800-669-9690 Fax (503) 288-8900 www.roadmasterinc.com



6. Remove two more plastic fasteners from each side under the marker lights (Fig.K), and then remove the marker lights.

7. Remove the two 7mm bolts, one from each side (Fig.L).

8. Remove the three 10mm nuts and the one 10mm bolt on the passenger side splash panel (Fig.M), then remove the passenger side splash panel (Fig.N).



9. Remove the one 10mm nut on the side of the fender liner on the driver's side (Fig.O).

10. Remove the three Phillips head screws connecting the fascia to the bumper core (Fig.P).

11. Pull the fender liner back (Fig.Q), then remove the two 7mm bolts from both sides of the fascia (Fig.R and Fig.S). Then, remove the fascia (Fig.T).



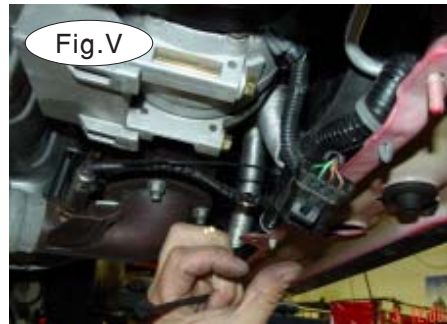


MOUNTING BRACKET KIT INSTALLATION INSTRUCTIONS

KIT# 3129-1

09/07/04
RV

ROADMASTER, Inc. 5602 N.E. Skyport Way Portland, OR 97218 1-800-669-9690 Fax (503) 288-8900 www.roadmasterinc.com



12. Remove the wiring harness retainers from the radiator (Fig.U).
13. Using the supplied zip ties, pull the wires aside and out of the way, on both sides (Fig.V).
14. Cut off the stud on the passenger side (Fig.W).



15. Insert the rear brace and bolt it into position from the back, with a 5/8" x 4 1/2" bolt (Fig.X). You may have to bend the air conditioning line on the passenger side out of the way (Fig.Y).
16. Position the receiver brace with the front hole aligning to the rear brace bolt, then use a lock washer and nut to secure it in place (Fig.Z and Fig.AA).



17. Using a 21/32" drill bit, enlarge the existing hole using the **top** hole as a template (Fig.BB).
18. Using a 3/8" drill bit, enlarge the existing hole using the **lower** hole as a template (Fig.CC).
19. Bolt through the top hole with a 1/2" x 4" bolt, then secure the bolt with a lock washer and nut.
20. Bolt through the lower hole with a 7/16" x 1 1/4" bolt, then secure the bolt with a lock washer and nut.



MOUNTING BRACKET KIT INSTALLATION INSTRUCTIONS

KIT# 3129-1

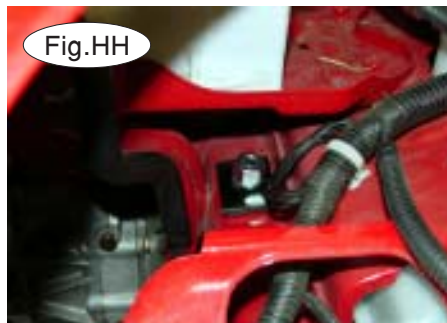
09/07/04
RV

ROADMASTER, Inc. 5602 N.E. Skyport Way Portland, OR 97218 1-800-669-9690 Fax (503) 288-8900 www.roadmasterinc.com



21. Attach the lower braces by bolting through the receiver brace, plate washer and tow hooks (Fig.DD), then into the brace (Fig.EE), using a 1/2" x 5 1/2" bolt. Secure the bolts with a lock washer and nut.

22. Bolt through the rear hole of the lower brace with a 1/2" x 3" bolt, then secure the bolt with a lock washer and nut (Fig.FF).



23. Using the receiver brace as a template, drill up through the existing hole and then up through the core support (Fig.GG).

24. Bolt from the bottom up through the rear brace (Fig.HH), then through the core support, with a 1/2" x 4" bolt. Secure the 1/4" x 2" x 1 1/2" backing plate to this bolt with a lock washer and nut.

25. Reverse steps 2 through 11 to reinstall the fascia.

26. Install the front braces in the receiver tubes, and pin them in place with 5/8" draw pins and spring pins (Fig.II).

27. Install the safety cables and connectors as shown (Fig.JJ).

28. Install the tow bar according to the manufacturer's instructions, and torque all mounting bolts to the specifications below.



BOLT TORQUE REQUIREMENTS

Note: The torque values represented below are intended as general guidelines. Torque requirements for specific applications may vary. Roadmaster does not warrant this information to be accurate for all applications and disclaims all liability for any claims or damages which may result from its use.

STANDARD BOLTS

Thread Size	Grade	Torque
5/16	5	13 ft./lb.
3/8	5	23 ft./lb.
7/16	5	37 ft./lb.
1/2	5	56 ft./lb.
5/8	5	150 ft./lb.

METRIC BOLTS

Thread Size	Grade	Plated/Unplated
8mm-1.0	8.8	20 ft./lb. 18 ft./lb.
8mm-1.25	8.8	19 ft./lb. 18 ft./lb.
10mm-1.25	8.8	38 ft./lb. 36 ft./lb.
10mm-1.5	8.8	37 ft./lb. 35 ft./lb.

METRIC BOLTS

Thread Size	Grade	Plated/Unplated
12mm-1.25	8.8	70 ft./lb. 65 ft./lb.
12mm-1.5	8.8	66 ft./lb. 61 ft./lb.
12mm-1.75	8.8	65 ft./lb. 60 ft./lb.
14mm-2.0	8.8	104 ft./lb. 97 ft./lb.

All illustrations and specifications contained herein are based on the latest information available at the time of publication approval. ROADMASTER, INC. reserves the right to make changes at any time without notice in material, specification and models or to discontinue models.