



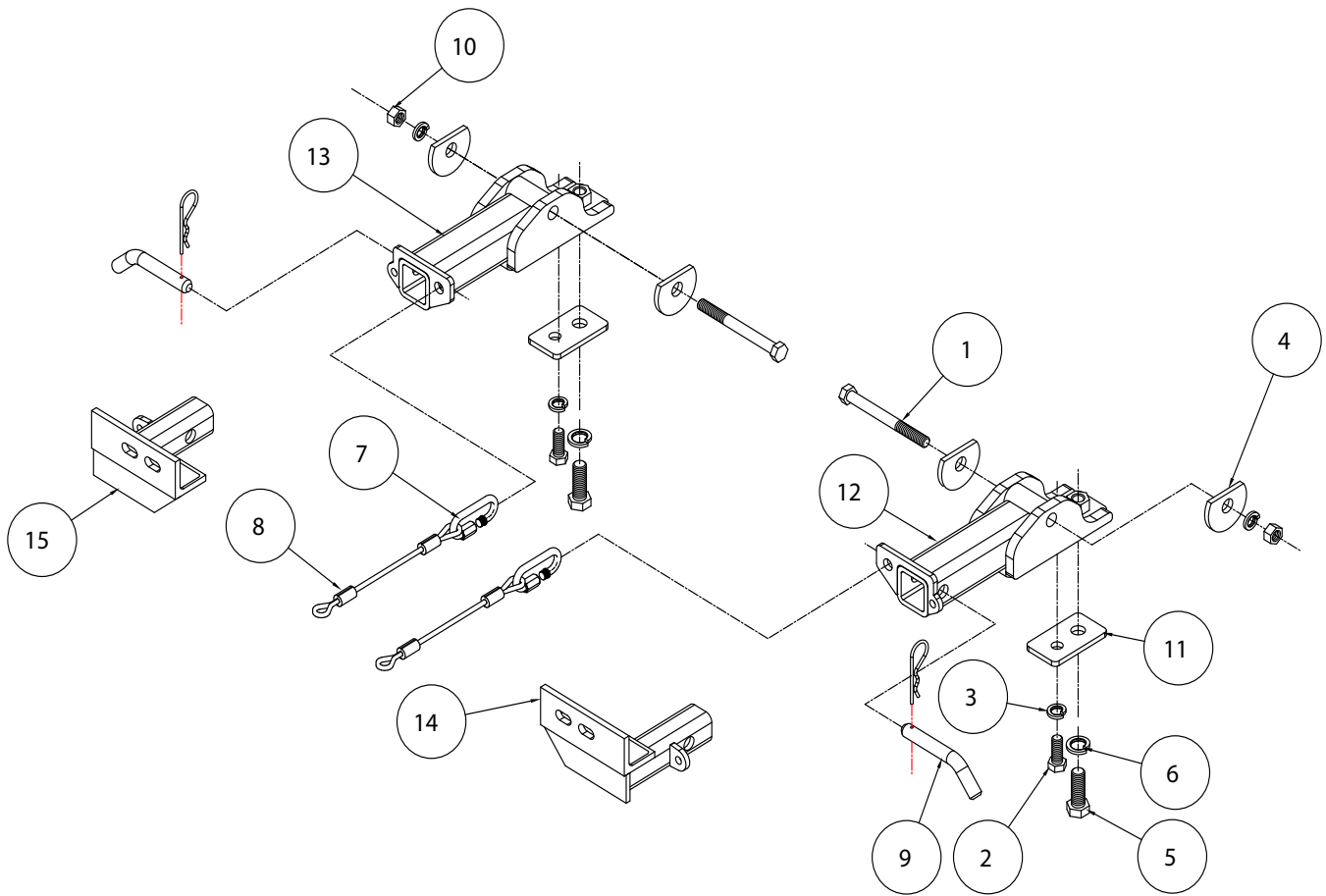
BASEPLATE KIT INSTALLATION INSTRUCTIONS

KIT# 3167-1

10/13/22
KS

ROADMASTER, Inc. 6110 NE 127th Ave. Vancouver, WA 98682 360-896-0407 fax 360-735-9300 www.roadmasterinc.com

⚠ WARNING
Only for use with tow bars rated at or above 10,000 lbs. GVWR. Using a lower rated tow bar may result in non-warranty failure, property damage, personal injury or death.



ITEM	QTY	NAME	MATERIAL
1	2	1/2" x 5" BOLT	350107-00
2	2	1/2" x 1 3/4" BOLT	350096-00
3	4	1/2" LOCK WASHER	350309-00
4	4	CLIPPED PLATE WASHER	A002687
5	2	5/8" x 1 3/4" BOLT	350149-00
6	2	5/8" LOCK WASHER	350313-00
7	2	QUICK LINK	200008-00
8	2	8" SAFETY CABLES	650646-08
9	2	DRAW PIN W/ CLIP	357035-00
10	2	1/2" HEX NUT	350258-00
11	2	1/4" X 2" X 3 1/2" - 2 HOLE BACKING PLATE	A003404
12	1	DRIVER SIDE RECEIVER	C002094
13	1	PASSENGER SIDE RECEIVER	C002095
14	1	DRIVER SIDE ARM	C002096
15	1	PASSENGER SIDE ARM	C002097



BASEPLATE KIT INSTALLATION INSTRUCTIONS

KIT# 3167-1

10/13/22
KS

ROADMASTER, Inc. 6110 NE 127th Ave. Vancouver, WA 98682 360-896-0407 fax 360-735-9300 www.roadmasterinc.com

This is one of our XL series brackets, which allows the visible front portion of the bracket to be easily removed from the front of the vehicle (Fig.A and Fig.B). The bracket consists of a main receiver brace, two removable front braces and a hardware pack.

The main receiver brace mounts to the frame rails. The removable front braces install in the main receiver brace.

Before starting the installation, lay out the kit components in order, as they will be used. This will give you a visual idea of how the components work, and will also confirm that everything is present and accounted for.



IMPORTANT: All baseplates **must** be assembled with all the bolts left loose for final adjustment and positioning (before tightening) unless otherwise instructed. All bolts **must** be torqued for proper strength. If more than one bolt is used per fastening point, the diagram may only show one. Use flat washers over all slotted holes and lock washers on all fasteners.

WARNING

Failure to heed these warnings or follow the installation instructions may result in a voided warranty, loss of towed vehicle, personal injury or death.

- Do not weld or modify this baseplate or its components. Welding or modification will void the warranty.
- Do not use this document as a basis to design/fabricate a baseplate, as it may not show all parts or structural components.
- We strongly recommend professional installation.
- If the towed vehicle has been in an accident, it must be properly repaired before attaching the baseplate. Do not install the baseplate if any structural frame damage is found.
- The installer must use all bolts and parts supplied. If running changes were made by the vehicle manufacturer after this kit was designed, some bolts or other fasteners may no longer be the correct size. It is the installer's responsibility to verify this kit is securely fastened to the vehicle.
- Use Loctite® Red on all bolts used to secure this baseplate. Torque all bolts to the specifications found at the end of these instructions. Do not over-torque the bolts or failure may occur.
- The installer must inspect the baseplate to ensure adequate clearance, particularly around hoses, air conditioner lines, radiators, etc. or non-warranty failure may result.
- Roadmaster manufactures many styles of baseplates. If your baseplate has removable arms, they must be removed before driving the vehicle, unless the arms can be pinned or padlocked in place. If not secured, the arms could vibrate out.
- Some motorhome chassis have such a tight turning radius that you can damage your motorhome, towed vehicle, tow bar or baseplate while turning sharply. Before getting on the road, test your turning radius in an empty parking lot. Turning too sharply could

result in non-warranty damage to your towing system, motorhome and/or towed vehicle.

- Do not back up with the towed vehicle attached or non-warranty damage will occur to your towing system or vehicles.
- The safety cables must connect the towing vehicle to the towed vehicle frame to frame, with the cables crossed, with enough slack for sharp turns. See cable instructions for proper routing. Failure to do so will result in non-warranty damage and/or the loss of the towed vehicle.
- This kit is designed for use with ROADMASTER tow bars and ROADMASTER adapters only. Using this kit with other brands, without an approved ROADMASTER adapter, may result in non-warranty damage or injury.
- Receiver extensions and out-of-level towing situations of 3 inches or more. This can cause the system to swing much higher and lower, causing excessive strain on the tow bar, baseplate and frame. That can cause the towing system to fail, causing property damage, personal injury or even death. If you must use a receiver extension or drop hitch to tow, it will reduce your receiver's weight capacity by 1/3 to avoid damaging your system. Never use more than one extension and/or drop hitch, as this will void your warranty.
- Every 3,000 miles, the owner must inspect all mounting points for cracks or fatigue, and check the fasteners for proper torque, according to the bolt torque requirements chart on the last page of these instructions.
- The owner must follow the vehicle manufacturer's instructions to prepare the vehicle for towing. Failure to do so may cause severe damage to the vehicle.
- This baseplate is only warranted for the original installation. Installing a used baseplate on another vehicle is not recommended and will void the warranty.

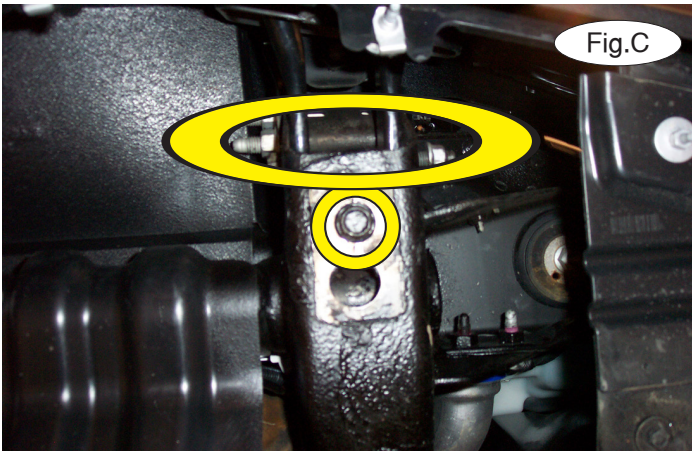


BASEPLATE KIT INSTALLATION INSTRUCTIONS

KIT# 3167-1

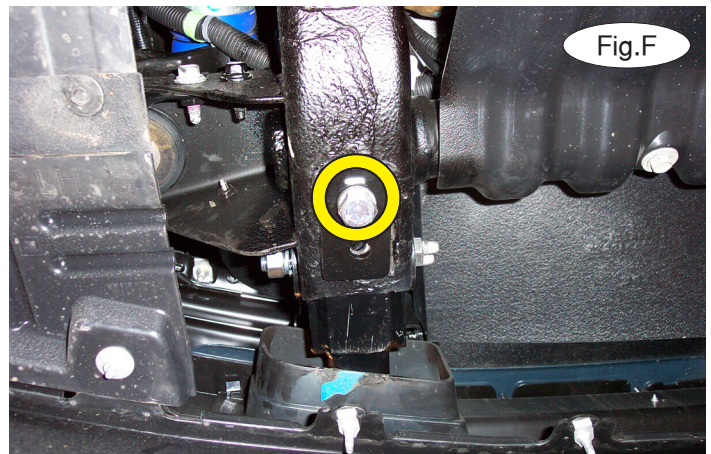
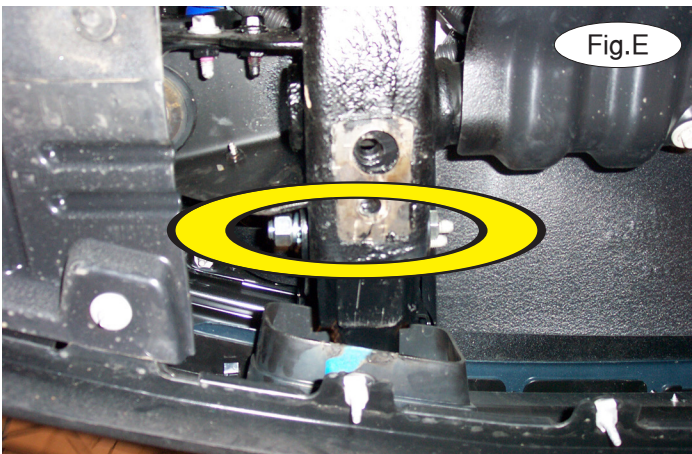
10/13/22
KS

ROADMASTER, Inc. 6110 NE 127th Ave. Vancouver, WA 98682 360-896-0407 fax 360-735-9300 www.roadmasterinc.com



1. **Important:** please use all supplied bolts and parts and read all instructions carefully before beginning this installation. The majority of questions you may have can be answered within the text, and proper installation will ensure safe and secure travel. Now, begin the installation.

Starting on the driver's side, remove the tow hook by removing one 18mm bolt and nut going through the frame and one 18mm bolt on the bottom of the frame (Fig.C). Pull out to remove the tow hooks. *Note:* they will not be replaced. Retain the tow hooks and mounting hardware in case the bracket is ever removed.



2. Insert the main receiver brace through the tow hook opening and into the frame, aligning it with the two side and bottom holes in the frame (Fig.D).

3. Place one of the supplied 1/2" clipped plate washers over one of the supplied 1/2" x 5" bolts and bolt through the inside hole of the frame rail, main receiver brace and through the outside hole of the frame rail. Finish with a 1/2" clipped plate washer, lock washer and nut (Fig.E).

4. Place one of the supplied 5/8" lock washers over one of the supplied 5/8" x 1 3/4" bolts and bolt through the largest of the holes in one of the supplied 1/4" x 2 1/2" x 3 1/2" backing plates, and bolt through the rear hole in the bottom of the frame rail and into the 5/8" weld nut in the main receiver brace (Fig.F).

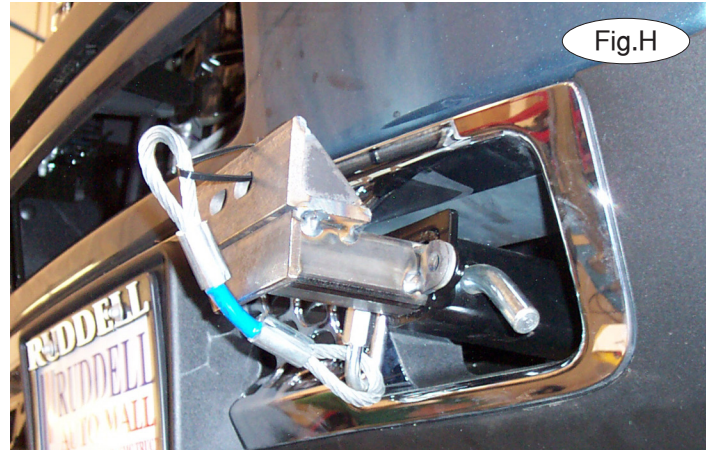
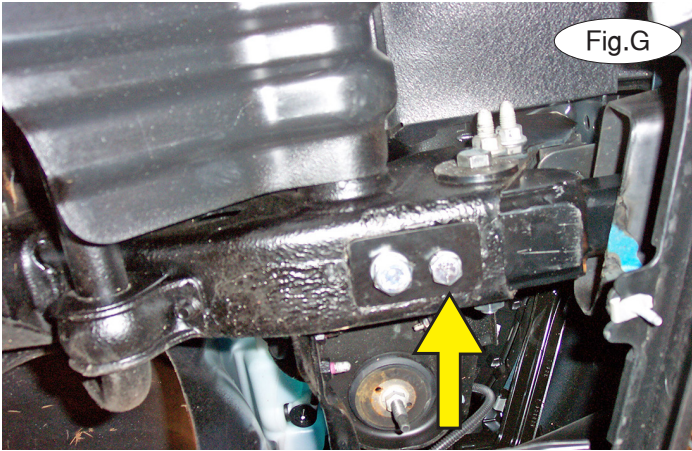


BASEPLATE KIT INSTALLATION INSTRUCTIONS

KIT# 3167-1

10/13/22
KS

ROADMASTER, Inc. 6110 NE 127th Ave. Vancouver, WA 98682 360-896-0407 fax 360-735-9300 www.roadmasterinc.com



- Place one of the supplied 1/2" lock washers over one of the supplied 1/2" x 1 3/4" bolts and bolt through the front hole in the frame rail and into the 1/2" weld nut in the main receiver brace (Fig.G).
- Now, repeat steps 1 through 5 for the passenger side of the vehicle. Starting with the two bolts on the bottom of the frame rail, torque all bolts to the bolt torque requirements found at the end of this document.
- Insert the removable front bracket arms into the front receiver braces, and secure them in place with the supplied 5/8" draw pins and spring pins.
- Attach the 8" safety cables with the cable connectors (Q-Links) to the front of the receiver braces (Fig.H).
- Attach the ends of the safety cables to the tow vehicle's safety cables.
- Install the tow bar to the mounting bracket according to the manufacturer's instructions.

BOLT TORQUE REQUIREMENTS

Note: The torque values represented below are intended as general guidelines. Torque requirements for specific applications may vary. Roadmaster does not warrant this information to be accurate for all applications and disclaims all liability for any claims or damages which may result from its use.

STANDARD BOLTS

Thread Size	Grade	Torque
5/16.....	5.....	13 ft./lb.
3/8.....	5.....	23 ft./lb.
7/16.....	5.....	37 ft./lb.
1/2.....	5.....	56 ft./lb.
5/8.....	5.....	150 ft./lb.

METRIC BOLTS

Thread Size	Grade	Plated / Unplated
8mm-1.0.....	8.8.....	20 ft./lb. 18 ft./lb.
8mm-1.25.....	8.8.....	19 ft./lb. 18 ft./lb.
10mm-1.25.....	8.8.....	38 ft./lb. 36 ft./lb.
10mm-1.5.....	8.8.....	37 ft./lb. 35 ft./lb.

METRIC BOLTS

Thread Size	Grade	Plated / Unplated
12mm-1.25.....	8.8.....	70 ft./lb. 65 ft./lb.
12mm-1.5.....	8.8.....	66 ft./lb. 61 ft./lb.
12mm-1.75.....	8.8.....	65 ft./lb. 60 ft./lb.
14mm-2.0.....	8.8.....	104 ft./lb. 97 ft./lb.

All illustrations and specifications contained herein are based on the latest information available at the time of publication approval. ROADMASTER, INC. reserves the right to make changes at any time without notice in material, specification and models or to discontinue models.