

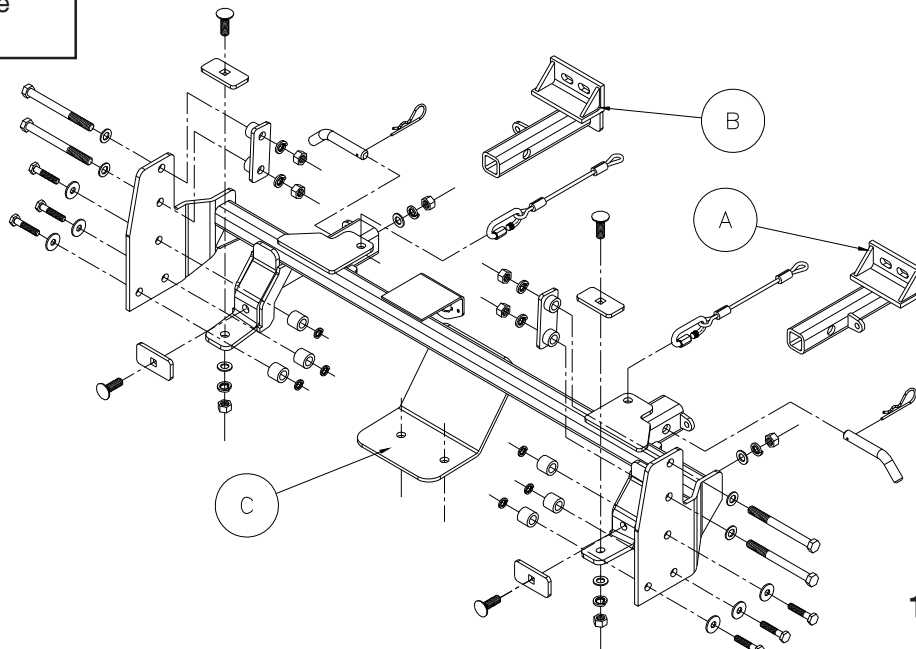
BASEPLATE KIT INSTALLATION INSTRUCTIONS

ROADMASTER, Inc. 6110 NE 127th Ave. Vancouver, WA 98682 1-800-669-9690 fax 360-735-9300 www.roadmasterinc.com

PARTS LIST:

- 1- FRONT BRACE (A) - Passenger side
- 1- FRONT BRACE (B) - Driver side
- 1- MAIN BRACE (C)

KIT NO. 336-1



11-8-01

IMPORTANT: All baseplates **must** be assembled with all the bolts left loose for final adjustment and positioning (before tightening) unless otherwise instructed. All bolts **must** be torqued for proper strength. If more than one bolt is used per fastening point, the diagram may only show one.

- Use flat washers over all slotted holes
- Use lock washers on all fasteners

WARNING

Failure to follow the below warnings and the installation instructions may result in voiding your warranty, property damage, the loss of your towed vehicle, personal injury or even death.

- Installation of most baseplates requires moderate mechanical aptitude and skills. We strongly recommend professional installation by an experienced installer.
- The installer must read the instructions and use all bolts and parts supplied.
- Use Loctite® Red on all bolts used for mounting this baseplate.
- Every 3,000 miles, the owner must inspect the fasteners for proper torque, according to the bolt torque requirements chart on the last page of these instructions. The owner must also inspect all mounting points for cracks or other signs of fatigue every 3,000 miles.
- The owner must check the vehicle manufacturer's instructions for the proper procedure(s) to prepare the vehicle for towing. Some vehicles must be equipped with a transmission lube pump, an axle disconnect, driveline disconnect or free-wheeling hubs before they can be towed. Failure to properly equip the vehicle will cause severe damage to the transmission.
- Do not weld. This baseplate is designed to be bolted to the vehicle. Welding will void the warranty.
- Do not use this document for custom fabrication, as it may not show all parts or structural components could result in loss of the towed vehicle.
- If the towed vehicle has been in an accident, it must be properly repaired before attaching the baseplate. Do not install the baseplate if any structural frame damage is found.
- If running changes were made by the vehicle manufacturer after this

kit was designed, some bolts or other fasteners in the hardware pack may no longer be the correct size. It is the installer's responsibility to verify this kit is securely fastened to the vehicle and fitted with the correct hardware to account for these changes.

- Roadmaster manufactures many styles of baseplates. If your baseplate has removable arms, they must be removed before driving the vehicle, unless the arms can be pinned or padlocked in place. If not secured, the arms could vibrate out.
- Some motorhome chassis have such a tight turning radius that you can damage your motorhome, towed vehicle, tow bar or baseplate while turning sharply. Before getting on the road, test your turning radius in an empty parking lot. Turning too sharply could result in non-warranty damage to towing system, motorhome and/or towed vehicle.
- Do not back up with the towed vehicle attached or non-warranty damage will occur to your towing system, motorhome and/or towed vehicle.
- The safety cables must connect the towing vehicle to the towed vehicle frame to frame, with the cables crossed, with enough slack for sharp turns. Refer to the cable instructions for proper routing. Failure to leave enough slack in the safety cables, or failure to connect the safety cables frame to frame, will result in the loss of the towed vehicle.
- This kit is designed for use with ROADMASTER tow bars and ROADMASTER adapters only. Using this kit with other brands, without an approved ROADMASTER adapter, may result in non-warranty damage or injury.
- Upon final installation, the installer must inspect the baseplate to ensure adequate clearance, particularly around hoses, air conditioner lines, radiators, etc.
- This baseplate is only warranted for the original installation. Installing a used baseplate on another vehicle is not recommended and will void the warranty.



BASEPLATE KIT INSTALLATION INSTRUCTIONS

ROADMASTER, Inc. 6110 NE 127th Ave. Vancouver, WA 98682 1-800-669-9690 fax 360-735-9300 www.roadmasterinc.com

KIT NO. 336-1

- Important:** please use all supplied bolts and parts and read all instructions carefully before beginning this installation. The majority of questions you may have can be answered within the text, and proper installation will ensure safe and secure travel. Now, begin the installation. This is one of our XL bracket series, which allows the visible front portion of the brackets to be easily removed from the front of the car by removing the front braces. The bracket kit consists of a receiver brace, two front braces, and a hardware pack. The rear receiver brace mounts to existing tie down plate mounts, the front of the frame and protrudes through the lower grill below the headlights. The front braces insert into the rear brace and pin in place. Before starting the installation, lay out the kit components as it is illustrated. This will give you a visual idea of how the components work and also confirm that everything is present and accounted for.
- Begin by removing the two lower front splash panels. Remove the fasteners in the front of the fender liners and pull back for access to the fender fascia junction and tie down plates on each side.
- Working on both sides, remove the front tie down plates and bolts (13-mm head).
- Remove two 10mm head bolts at the junction of the fender and the front fascia on each side.
- Now remove four plastic fasteners between the headlights holding the top of the fascia then 10 more fasteners underneath.
- Pull the fascia forward enough to disconnect the fog lights then finish pulling off. Set aside for now.
- Support the lower center sub frame with a shop jack or something similar. Now unbolt the two center support bolts in the front mount.
- Slip the main receiver braces lower mounting plate between the sub frame and the frame with the side mounting plates over the tie down plate mounting area on each side. Bolt through the lower center mounting plate with the original mounting bolts removed in step 7.
- Now find six 7/8" pipe spacers and bolt through the side mounts into the tie down plate mounts with the spacers between the brace and frame on each side. Use 10mm x 1.25 x 50mm bolts, lock washers and flat washers for this.
- Check the main brace alignment then tighten the lower bolts and the side bolts installed so far.
- Using the main receiver brace as a drill template, drill two 17/32" holes through the frame above the tie down mounting area on each side.
- Bolt through the receiver brace and frame with 1/2" x 5 1/2" bolts, 12mm flat washers, pipe spacer plates, lock washers and nuts. Note: The pipe spacer plate for the passenger side has 1/2" spacers, the driver side takes a longer 3/4" spacer. Don't over tighten these bolts, limit to about 45 ft./lbs.
- Drill two more 17/32" holes per side through the bottom and front of the frame using the brace as a template.
- Fish wire 1/2" x 1 1/2" carriage bolts and 1/4" x 1 1/2" x 3" backing plates into each front hole through the square access hole in the front of each frame. Secure with 1/2" nuts and lock washers. Now, do the same thing for the bottom bolts.
- Tighten the rest of the mounting bolts to the torque specifications below.
- Replace the front fascia, reversing steps 4 through 6.

11-8-01

BOLT TORQUE REQUIREMENTS

Note: The torque values represented below are intended as general guidelines. Torque requirements for specific applications may vary. Roadmaster does not warrant this information to be accurate for all applications and disclaims all liability for any claims or damages which may result from its use.

STANDARD BOLTS			METRIC BOLTS			METRIC BOLTS		
Thread Size	Grade	Torque	Thread Size	Grade	Plated/Unplated	Thread Size	Grade	Plated/Unplated
5/16	5	13 ft./lb.	8mm-1.0	8.8	20 ft./lb. 18 ft./lb.	12mm-1.25	8.8	70 ft./lb. 65 ft./lb.
3/8	5	23 ft./lb.	8mm-1.25	8.8	19 ft./lb. 18 ft./lb.	12mm-1.5	8.8	66 ft./lb. 61 ft./lb.
7/16	5	37 ft./lb.	10mm-1.25	8.8	38 ft./lb. 36 ft./lb.	12mm-1.75	8.8	65 ft./lb. 60 ft./lb.
1/2	5	56 ft./lb.	10mm-1.5	8.8	37 ft./lb. 35 ft./lb.	14mm-2.0	8.8	104 ft./lb. 97 ft./lb.
5/8	5	150 ft./lb.						

All illustrations and specifications contained herein are based on the latest information available at the time of publication approval. ROADMASTER, INC. reserves the right to make changes at any time without notice in material, specification and models or to discontinue models.



BASEPLATE KIT INSTALLATION INSTRUCTIONS

KIT NO. 336-1

17. Reattach the front fender splash panels and the two lower splash panels.
18. Install the front braces by inserting into the front of the receivers and pinning with 5/8" draw pins and 1/8" spring pins.
19. Mount the tow bar according to the tow bar manufacturer's instructions. Install the 8" safety cables to the side of the main receivers with the quick links provided. Attach the other end to the tow vehicle's safety cables and the tow bar.

Hardware list

- 6- 10mm x 1.25 x 50mm bolts
- 6- 10mm lock washers
- 6- 10mm fender washers
- 8-12mm flat washers
- 4- 1/2" x 5 1/2" bolts
- 4- 1/2" x 1 1/2" carriage bolts
- 8- 1/2" lock washers
- 8- 1/2" nuts
- 1- 1/4" x 2" PS spacer plate
- 1- 1/4" x 2" DS spacer plate
- 4- 1/4" x 1 1/2" x 3" sq. hole backing plates
- 2- 8" safety cables
- 2- cable connectors
- 2- 5/8" draw pins
- 2- 1/8" spring pins
- 6- 7/8" pipe spacers

11-8-01

BOLT TORQUE REQUIREMENTS

Note: The torque values represented below are intended as general guidelines. Torque requirements for specific applications may vary. Roadmaster does not warrant this information to be accurate for all applications and disclaims all liability for any claims or damages which may result from its use.

STANDARD BOLTS			METRIC BOLTS			METRIC BOLTS		
Thread Size	Grade	Torque	Thread Size	Grade	Plated/Unplated	Thread Size	Grade	Plated/Unplated
5/16	5	13 ft./lb.	8mm-1.0	8.8	20 ft./lb. 18 ft./lb.	12mm-1.25	8.8	70 ft./lb. 65 ft./lb.
3/8	5	23 ft./lb.	8mm-1.25	8.8	19 ft./lb. 18 ft./lb.	12mm-1.5	8.8	66 ft./lb. 61 ft./lb.
7/16	5	37 ft./lb.	10mm-1.25	8.8	38 ft./lb. 36 ft./lb.	12mm-1.75	8.8	65 ft./lb. 60 ft./lb.
1/2	5	56 ft./lb.	10mm-1.5	8.8	37 ft./lb. 35 ft./lb.	14mm-2.0	8.8	104 ft./lb. 97 ft./lb.
5/8	5	150 ft./lb.						

All illustrations and specifications contained herein are based on the latest information available at the time of publication approval. ROADMASTER, INC. reserves the right to make changes at any time without notice in material, specification and models or to discontinue models.