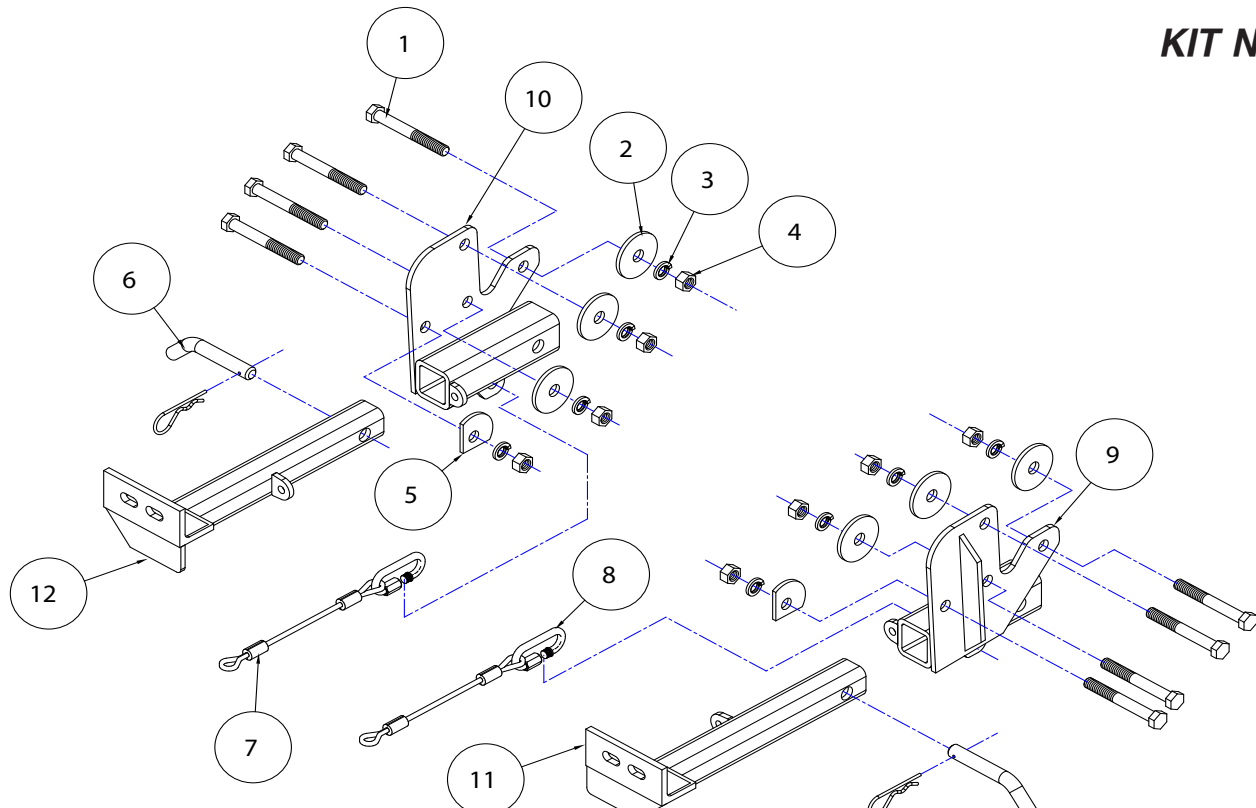


# BASEPLATE KIT INSTALLATION INSTRUCTIONS

ROADMASTER, Inc. 6110 NE 127th Ave. Vancouver, WA 98682 360-896-0407 fax 360-735-9300 www.roadmasterinc.com

050818

KIT NO. 435-3



**IMPORTANT:** All baseplates **must** be assembled with all the bolts left loose for final adjustment and positioning (before tightening) unless otherwise instructed. All bolts **must** be torqued for proper strength. If more than one bolt is used per fastening point, the diagram may only show one. Use flat washers over all slotted holes and lock washers on all fasteners.

## WARNING

Failure to heed these warnings or follow the installation instructions may result in a voided warranty, loss of towed vehicle, personal injury or death.

- Do not weld or modify this baseplate or its components. Welding or modification will void the warranty.
- Do not use this document as a basis to design/fabricate a baseplate, as it may not show all parts or structural components.
- We strongly recommend professional installation.
- If the towed vehicle has been in an accident, it must be properly repaired before attaching the baseplate. Do not install the baseplate if any structural frame damage is found.
- The installer must use all bolts and parts supplied. If running changes were made by the vehicle manufacturer after this kit was designed, some bolts or other fasteners may no longer be the correct size. It is the installer's responsibility to verify this kit is securely fastened to the vehicle.
- Use Loctite® Red on all bolts used to secure this baseplate. Torque all bolts to the specifications found at the end of these instructions. Do not over-torque the bolts or failure may occur.
- The installer must inspect the baseplate to ensure adequate clearance, particularly around hoses, air conditioner lines, radiators, etc. or non-warranty failure may result.
- Roadmaster manufactures many styles of baseplates. If your baseplate has removable arms, they must be removed before driving the vehicle, unless the arms can be pinned or padlocked in place. If not secured, the arms could vibrate out.
- Some motorhome chassis have such a tight turning radius that you can damage your motorhome, towed vehicle, tow bar or baseplate while turning sharply. Before getting on the road, test your turning radius in

an empty parking lot. Turning too sharply could result in non-warranty damage to your towing system, motorhome and/or towed vehicle.

- Do not back up with the towed vehicle attached or non-warranty damage will occur to your towing system or vehicles.
- The safety cables must connect the towing vehicle to the towed vehicle frame to frame, with the cables crossed, with enough slack for sharp turns. See cable instructions for proper routing. Failure to do so will result in non-warranty damage and/or the loss of the towed vehicle.
- This kit is designed for use with ROADMASTER tow bars and ROADMASTER adapters only. Using this kit with other brands, without an approved ROADMASTER adapter, may result in non-warranty damage or injury.
- Receiver extensions and out-of-level towing situations of 3 inches or more. This can cause the system to swing much higher and lower, causing excessive strain on the tow bar, baseplate and frame. That can cause the towing system to fail, causing property damage, personal injury or even death. If you must use a receiver extension or drop hitch to tow, it will reduce your receiver's weight capacity by 1/3 to avoid damaging your system. Never use more than one extension and/or drop hitch, as this will void your warranty.
- Every 3,000 miles, the owner must inspect all mounting points for cracks or fatigue, and check the fasteners for proper torque, according to the bolt torque requirements chart on the last page of these instructions.
- The owner must follow the vehicle manufacturer's instructions to prepare the vehicle for towing. Failure to do so may cause severe damage to the vehicle.
- This baseplate is only warranted for the original installation. Installing a used baseplate on another vehicle is not recommended and will void the warranty.

# BASEPLATE KIT INSTALLATION INSTRUCTIONS

ROADMASTER, Inc. 6110 NE 127th Ave. Vancouver, WA 98682 360-896-0407 fax 360-735-9300 www.roadmasterinc.com

050818

KIT NO. 435-3

## Parts List

Item	Qty.	Description	Part #
1.....	8 .....	1/2" x 4" BOLT .....	350105-00
2.....	6 .....	PLATE WASHER .....	350362-00
3.....	8 .....	1/2" LOCK WASHER .....	350309-00
4.....	8 .....	1/2" HEX NUT .....	350258-00
5.....	2 .....	CLIPPED PLATE WASHER.....	350362-00
6.....	2 .....	DRAW PIN W/ CLIP .....	357035-00
7.....	2 .....	SAFETY CABLE .....	500646-12
8.....	2 .....	QUICK LINK.....	200008-00
9.....	1 .....	DRIVER SIDE RECEIVER.....	C-001194
10.....	1 .....	PASSENGER SIDE RECEIVER .....	C-001195
11.....	1 .....	DRIVER SIDE ARM .....	C-001196
12.....	1 .....	PASSENGER SIDE ARM.....	C-001197

1. **Important:** please use all supplied bolts and parts and read all instructions carefully before beginning this installation. The majority of questions you may have can be answered within the text, and proper installation will ensure safe and secure travel. Now, begin the installation. This bracket is one of our XL Series, which is designed to be partly removable. The main receiver braces mount directly to the outside of each main frame tube. The front braces extend through the lower fairing underneath the metal bumper. Two 1 3/4" sq. holes will have to be cut in the lower plastic fairing. Remove the front bumper assembly to permit easy access to the mounting area. This is accomplished by removing four large nuts on the inside of each bumper mounting bracket, pushing the bolts in and removing the entire bumper assembly. *Note:* this assembly is heavy and a helping hand may be necessary.
2. The main braces can now be mounted to the sides of the frame tubes using the supplied 1/2" x 4" bolts, plate washers, lock washers and nuts. They should be mounted as shown in the illustration. *Note:* the bolts should be put through the brace, frame and backed on the inside of the frame with a plate washer, lock washer and nut. The top hole may be missing on some models. In this case use the brace as a template and drill a hole through the frame and bolt through. The top bolt is needed on this installation.
3. Temporarily insert the front braces into the receivers and pin, then align and torque the mounting bolts to the specifications below. Now, remove the front braces.
4. Reinstall the bumper at this point and measure center to center on the braces. Transfer this measurement to the lower fairing and cut the 1 3/4" sq. access holes for the front braces.
5. Insert the front braces into the receiver braces and secure with 5/8" draw pins and 1/8" spring pins.
6. Mount the tow bar according to the manufacturer's instructions.
7. Attach the 17" safety cables to the receiver braces with the provided cable connectors. Attach the other end to the tow vehicle's safety cables and the tow bar.

### BOLT TORQUE REQUIREMENTS

Note: The torque values represented below are intended as general guidelines. Torque requirements for specific applications may vary. Roadmaster does not warrant this information to be accurate for all applications and disclaims all liability for any claims or damages which may result from its use.

#### STANDARD BOLTS

Thread Size	Grade	Torque
5/16-18 .....	5 .....	13 lb-ft
3/8-16 .....	5 .....	23 lb-ft
7/16-14 .....	5 .....	37 lb-ft
1/2-13 .....	5 .....	57 lb-ft
5/8-11.....	5 .....	112 lb-ft

#### METRIC BOLTS

Thread Size	Grade	Torque
6mm-1.0 .....	8.8 .....	6 lb-ft
8mm-1.0 .....	8.8 .....	18 lb-ft
8mm-1.25 .....	8.8 .....	16 lb-ft
10mm-1.25 .....	8.8 .....	36 lb-ft
10mm-1.5 .....	8.8 .....	31 lb-ft

#### METRIC BOLTS

Thread Size	Grade	Torque
12mm-1.25 .....	8.8.....	64 lb-ft
12mm-1.5 .....	8.8.....	60 lb-ft
12mm-1.75 .....	8.8.....	55 lb-ft
14mm-2.0 .....	8.8.....	88 lb-ft