



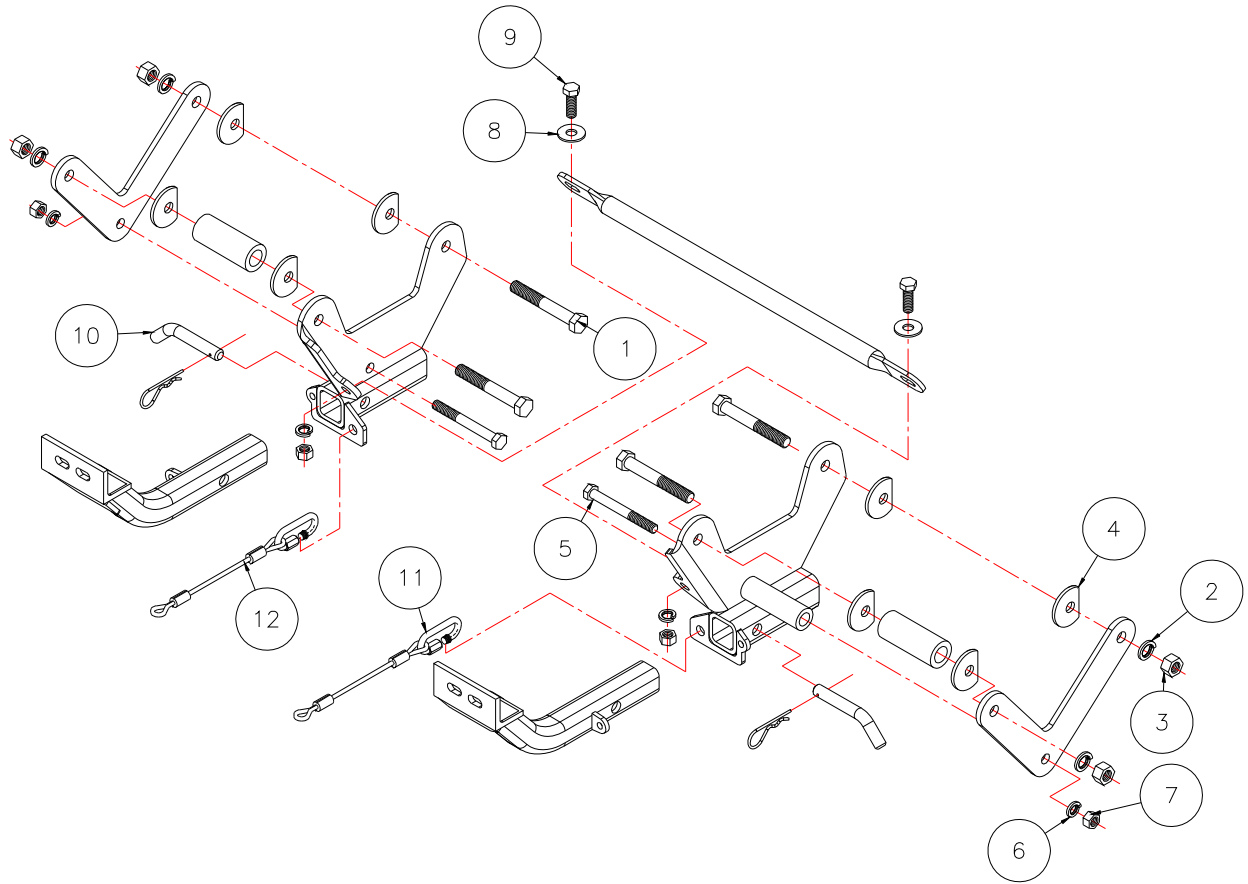
# MOUNTING BRACKET KIT INSTALLATION INSTRUCTIONS

**KIT# 492-1**

12/21/07

KS

ROADMASTER, Inc. 6110 NE 127th Ave. Vancouver, WA 98682 1-800-669-9690 fax 360-735-9300 www.roadmasterinc.com



Item	Qty	Length	Width	Hardware	Part No.
1	4	5 1/2"	5/8"	BOLT	350161-00
2	4	5/8"		LOCK WASHER	350313-00
3	4	5/8"		NUT	350262-00
4	8	5/8"		CLIPPED PLATE WASHER	350352-00
5	2	5 1/2"	1/2"	BOLT	350108-00
6	4	1/2"		LOCKWASHER	350309-00
7	4	1/2"		NUT	350258-00
8	2	1/2"		FLAT WASHER	350308-20
9	2	1 1/2"	1/2"	BOLT	350095-00
10	2			DRAW PIN/SPRING PIN	357035-00
11	2			CONNECTORS	200008-00
12	2	10"		CABLES, 8,000 lb. rated	650648-10



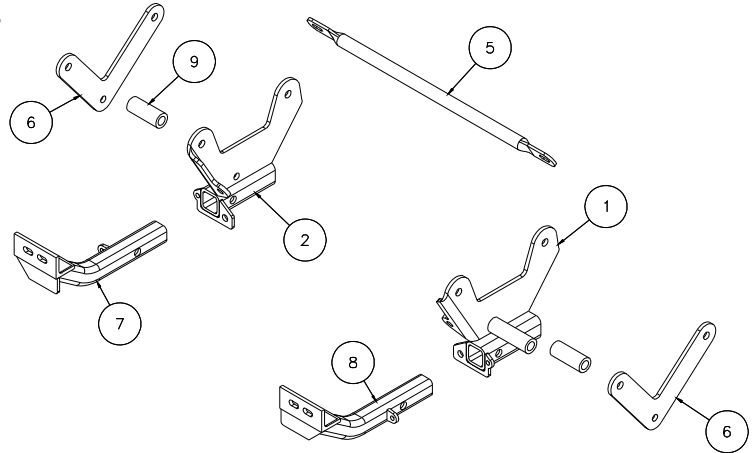
# MOUNTING BRACKET KIT INSTALLATION INSTRUCTIONS

**KIT# 492-1**  
12/21/07  
KS

ROADMASTER, Inc. 6110 NE 127th Ave. Vancouver, WA 98682 1-800-669-9690 fax 360-735-9300 www.roadmasterinc.com

**IMPORTANT:** All brackets **must** be assembled with all the bolts left loose for final adjustment & positioning (before tightening) unless otherwise instructed. All bolts **must** be torqued for proper strength. If more than one bolt is used per fastening point, the diagram may only show one.

- Use flat washers over all slotted holes
- Use lock washers on all fasteners



Item	Qty	Part No.	Assembly
1	1	C-000689	DRIVER SIDE RECEIVER BRACE WELDMENT
2	1	C-000690	PASSENGER SIDE RECEIVER BRACE WELDMENT
5	1	B-000477	CROSS BAR
6	2	A-001170	BACKING PLATE
7	1	C-000692	PASSENGER SIDE ARM WELDMENT
8	1	C-000691	DRIVER SIDE ARM WELDMENT
9	2	A-001179	1 1/4"OD X 3 1/8" X .250 WALL TUBE

ROADMASTER Limited Warranty, including One-Year Conditional Warranty Text and Product Registration Card, in Carton.

## WARNING

Failure to follow these instructions can result in property damage, personal injury or even death.

- **Installation of most mounting brackets requires moderate mechanical aptitude and skills.** We strongly recommend professional installation by an experienced installer.
- **The installer must read the instructions and use all bolts and parts supplied.** Failure to securely fasten the bracket could result in loss of the towed vehicle.
- **Do not use this document for custom fabrication,** as it may not show all parts or structural components. Custom fabrication or an attempt to copy this bracket design could result in loss of the towed vehicle.
- **The owner must inspect all mounts and brackets before each use** for cracks or other signs of fatigue. Also, inspect the fasteners for proper torque, according to the bolt torque requirements chart on the last page. Failure to do so could result in loss of the towed vehicle.
- **The owner must check the vehicle manufacturer's instructions for the proper procedure(s) to prepare the vehicle for towing.** Some vehicles must be equipped with a transmission lube pump, an axle disconnect, driveline disconnect or free-wheeling hubs before they can be towed. Failure to properly equip the vehicle will cause severe damage to the transmission.
- **If running changes were made** by the vehicle manufacturer after this bracket was designed, some bolts or other fasteners in the hardware pack may no longer be the correct size. **It is the installer's responsibility** to verify that the bracket is securely fastened to the vehicle and fitted with the correct hardware to account for these changes. Failure to securely fasten the bracket could result in loss of the towed vehicle.
- If the towed vehicle has been in an accident, it must be properly repaired before attaching the bracket. **Do not install the bracket if any structural frame damage is found.** Failure to repair the damage could result in the loss of the towed vehicle.
- Some motorhome chassis have such a tight turning radius that you can damage your motorhome, towed vehicle, tow bar or bracket while turning sharply. **Before getting on the road, test your turning radius in an empty parking lot.** Turning too sharply could result in non-warranty damage to towing system, motorhome and/or towed vehicle.
- **Do not back up with the towed vehicle attached** or non-warranty damage will occur to your towing system, motorhome and/or towed vehicle.
- **The safety cables must connect the towing vehicle to the towed vehicle frame to frame, with the cables crossed, with enough slack for sharp turns.** Refer to the cable instructions for proper routing. Failure to leave enough slack in the safety cables, or failure to connect the safety cables frame to frame, will result in the loss of the towed vehicle.
- This bracket is designed for use with ROADMASTER tow bars and ROADMASTER adaptors only. **Using this bracket with other brands, without an approved ROADMASTER adaptor, may result in non-warranty damage or injury.**
- Upon final installation, **the installer must inspect the bracket to ensure adequate clearance, particularly around hoses, air conditioner lines, radiators, etc.,** or non-warranty damage to the towed vehicle will result.
- **This bracket is only warranted for the original installation.** Installing a used bracket on another vehicle is not recommended and will void the warranty.

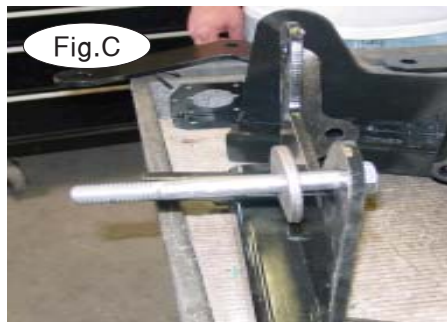


# MOUNTING BRACKET KIT INSTALLATION INSTRUCTIONS

**KIT# 492-1**  
12/21/07  
KS

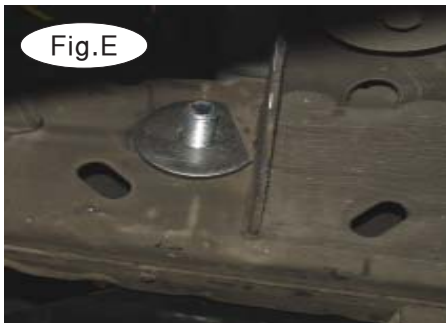
ROADMASTER, Inc. 6110 NE 127th Ave. Vancouver, WA 98682 1-800-669-9690 fax 360-735-9300 www.roadmasterinc.com

1. This bracket kit is one of our XL series, which allows you to remove the most visual portion of the bracket (Fig.A). The kit consists of two receiver braces, two front braces and a hardware pack. The receiver braces are designed to mount to the frame tubes on each side. Some units may require removal of the lower air dam or holes cut for the front braces to slide into the receivers. Layout the kit as illustrated, this will show you how it is assembled and assure the kit is complete.



**1. Important:** please use all supplied bolts and parts and read all instructions carefully before beginning this installation. The majority of questions you may have can be answered within the text, and proper installation will ensure safe and secure travel. Now, begin the installation.

2. Working on one side at a time, select a receiver brace, one L shaped backing plate, one 5/8" x 5 1/2" bolt, two 5/8" clipped plate washers, a lock washer and nut. Insert the bolt in the rear mounting hole in the receiver brace (Fig.B) followed with one 5/8" plate washer (Fig.C).



3. Find an existing hole on the inside of the frame rail and mount the receiver brace to the frame rail with the bolt completely through the frame (Fig.D). Follow with another 5/8" plate washer (Fig.E), the L shaped backing plate then a lock washer and nut (Fig.F).



# MOUNTING BRACKET KIT INSTALLATION INSTRUCTIONS

**KIT# 492-1**  
12/21/07  
KS

ROADMASTER, Inc. 6110 NE 127th Ave. Vancouver, WA 98682 1-800-669-9690 fax 360-735-9300 www.roadmasterinc.com



4. Find another 5/8" x 5½" bolt, two 5/8" clipped plate washers, a pipe spacer, lock washer and nut. Bolt through the front mounting hole in the brace in the same manner as the two previous steps with the exception of installing the pipe spacer inside the front of the frame (Fig.G,H,I,J).

5. Bolt through the bottom of the receiver brace and the L shaped backing plate with a ½" x 5½" bolt, lock washer and nut (Fig.K,L).

6. Repeat step 2 through 5 for the remaining side (Fig.M).

7. Mount the center brace between the two receiver braces with two ½" x 1½" bolts, flat washers, lock washers and nuts (Fig.M,N).

8. Torque all mounting bolts to the specifications on the last page.

9. Insert the front brace into the receiver tubes and pin with 5/8" draw pins and 1/8" spring pins (Fig.O,P). *Note:* if vehicle has a additional small air dam, either remove or cut it for clearance.

10. Install the tow bar according to the manufacturer's instructions and torque all mounting bolts to the specifications at the end of these instructions.

11. Attach one end of the included 10" safety cables to the lower front



## BOLT TORQUE REQUIREMENTS

Note: The torque values represented below are intended as general guidelines. Torque requirements for specific applications may vary. Roadmaster does not warrant this information to be accurate for all applications and disclaims all liability for any claims or damages which may result from its use.

### STANDARD BOLTS

Thread Size	Grade	Torque
5/16	5	13 ft./lb.
3/8	5	23 ft./lb.
7/16	5	37 ft./lb.
1/2	5	56 ft./lb.
5/8	5	150 ft./lb.

### METRIC BOLTS

Thread Size	Grade	Plated / Unplated
8mm-1.0	8.8	20 ft./lb. 18 ft./lb.
8mm-1.25	8.8	19 ft./lb. 18 ft./lb.
10mm-1.25	8.8	38 ft./lb. 36 ft./lb.
10mm-1.5	8.8	37 ft./lb. 35 ft./lb.

### METRIC BOLTS

Thread Size	Grade	Plated / Unplated
12mm-1.25	8.8	70 ft./lb. 65 ft./lb.
12mm-1.5	8.8	66 ft./lb. 61 ft./lb.
12mm-1.75	8.8	65 ft./lb. 60 ft./lb.
14mm-2.0	8.8	104 ft./lb. 97 ft./lb.

All illustrations and specifications contained herein are based on the latest information available at the time of publication approval. ROADMASTER, INC. reserves the right to make changes at any time without notice in material, specification and models or to discontinue models.