

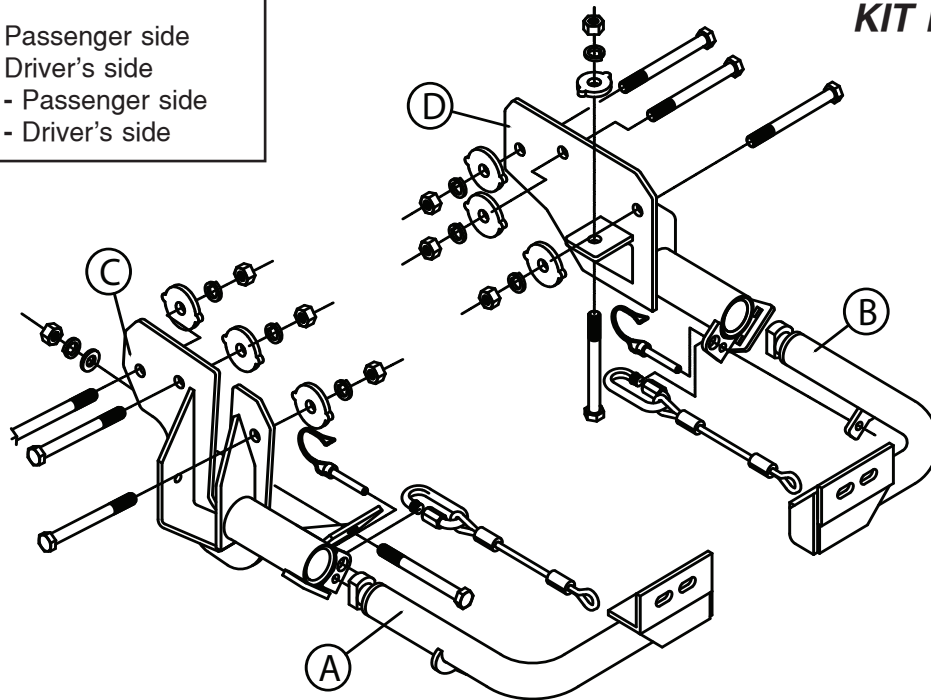
BASEPLATE KIT INSTALLATION INSTRUCTIONS

ROADMASTER, Inc. 6110 NE 127th Ave. Vancouver, WA 98682 360-896-0407 fax 360-735-9300 www.roadmasterinc.com

PARTS LIST:

- 1- FRONT BRACE (A) - Passenger side
- 1- FRONT BRACE (B) - Driver's side
- 1- MAIN RECEIVER (C) - Passenger side
- 1- MAIN RECEIVER (D) - Driver's side

KIT NO. 521227-1



12/12/12

IMPORTANT: All baseplates **must** be assembled with all the bolts left loose for final adjustment and positioning (before tightening) unless otherwise instructed. All bolts **must** be torqued for proper strength. If more than one bolt is used per fastening point, the diagram may only show one. Use flat washers over all slotted holes and lock washers on all fasteners.

WARNING

Failure to heed these warnings or follow the installation instructions may result in a voided warranty, loss of towed vehicle, personal injury or death.

- Do not weld or modify this baseplate or its components. Welding or modification will void the warranty.
- Do not use this document as a basis to design/fabricate a baseplate, as it may not show all parts or structural components.
- We strongly recommend professional installation.
- If the towed vehicle has been in an accident, it must be properly repaired before attaching the baseplate. Do not install the baseplate if any structural frame damage is found.
- The installer must use all bolts and parts supplied. If running changes were made by the vehicle manufacturer after this kit was designed, some bolts or other fasteners may no longer be the correct size. It is the installer's responsibility to verify this kit is securely fastened to the vehicle.
- Use Loctite® Red on all bolts used to secure this baseplate. Torque all bolts to the specifications found at the end of these instructions. Do not over-torque the bolts or failure may occur.
- The installer must inspect the baseplate to ensure adequate clearance, particularly around hoses, air conditioner lines, radiators, etc. or non-warranty failure may result.
- Roadmaster manufactures many styles of baseplates. If your baseplate has removable arms, they must be removed before driving the vehicle, unless the arms can be pinned or padlocked in place. If not secured, the arms could vibrate out.
- Some motorhome chassis have such a tight turning radius that you can damage your motorhome, towed vehicle, tow bar or baseplate while turning sharply. Before getting on the road, test your turning radius in an empty parking lot. Turning too sharply could result in non-warranty damage to your towing system, motorhome and/or towed vehicle.
- Do not back up with the towed vehicle attached or non-warranty damage will occur to your towing system or vehicles.
- The safety cables must connect the towing vehicle to the towed vehicle frame to frame, with the cables crossed, with enough slack for sharp turns. See cable instructions for proper routing. Failure to do so will result in non-warranty damage and/or the loss of the towed vehicle.
- This kit is designed for use with ROADMASTER tow bars and ROADMASTER adapters only. Using this kit with other brands, without an approved ROADMASTER adapter, may result in non-warranty damage or injury.
- Receiver extensions and out-of-level towing situations of 3 inches or more. This can cause the system to swing much higher and lower, causing excessive strain on the tow bar, baseplate and frame. That can cause the towing system to fail, causing property damage, personal injury or even death. If you must use a receiver extension or drop hitch to tow, it will reduce your receiver's weight capacity by 1/3 to avoid damaging your system. Never use more than one extension and/or drop hitch, as this will void your warranty.
- Every 3,000 miles, the owner must inspect all mounting points for cracks or fatigue, and check the fasteners for proper torque, according to the bolt torque requirements chart on the last page of these instructions.
- The owner must follow the vehicle manufacturer's instructions to prepare the vehicle for towing. Failure to do so may cause severe damage to the vehicle.
- This baseplate is only warranted for the original installation. Installing a used baseplate on another vehicle is not recommended and will void the warranty.



BASEPLATE KIT INSTALLATION INSTRUCTIONS

ROADMASTER, Inc. 6110 NE 127th Ave. Vancouver, WA 98682 360-896-0407 fax 360-735-9300 www.roadmasterinc.com

KIT NO. 521227-1

1. This is one of our EZ lock bracket series which allows the visible front portion of the brackets to be easily removed from the front of the car by rotating the front braces. The bracket kit consists of two main receiver braces, two tubular front braces, and a hardware pack. The rear receiver braces mount to the bottom of the sub frame and protrude through the lower grill below the headlights and the bumper. The front tubular braces are inserted into the rear braces and rotated 90 degrees to lock in place. The sides of the lower grille will have to be trimmed to fit around the tubular portion of the main braces or left off. The front bumper fascia will have to be removed to access the frame mounting area. Before starting the installation, lay out the kit components as it is illustrated. This will give you a visual idea of how the components work and also confirm that everything is present and accounted for.
2. **Important: please use all supplied bolts and parts and read all instructions carefully before beginning this installation. The majority of questions you may have can be answered within the text, and proper installation will ensure safe and secure travel.** Now, begin the installation by removing three plastic pop fasteners and a number 25 torx screw located in each front fender well. To remove these pop fasteners, press the center pin out with a small punch. Be sure and save the center pins with the fasteners for reinstallation. The torx screw is located inside the fender well near the junction of the upper corner of the fascia and the fender well.
3. Remove the upper grille by pulling forward on the top of the grille then lifting up and out. This will expose two number 30 torx bolts in board of each head light and three more in the top of the bumper fascia, remove all five.
4. Pull the two front lower side grilles forward and out. This will expose a number 30 torx bolt in each opening which needs to be removed.
5. Go to the bottom of the fascia and remove two number 25 torx screws on each side and four pop fasteners in the middle of the fascia.
6. Pull the fascia forward to disconnect the marker lights, then remove the fascia completely.
7. Starting with the passenger side, unbolt the side and front horn including the front horn bracket. Push the black vacuum canister up to release it from its mount and pull out to provide clearance.
8. Take the passenger side receiver brace and insert behind the vacuum canister and air conditioning canister. Bolt through the front mounting hole and towing bracket with a 1/2" x 5" bolt, flat washer, lock washer and nut. Tighten enough to hold brace in position. Check the alignment, top of brace should be parallel to the top frame rail flange.
9. Using the brace as a drill template, drill three holes through both sides of the frame rail. Be sure to use a backer plate behind the frame rail when drilling.
10. Now bolt through the frame and brace with three 1/2" x 5" bolts, 1/2"plate washers, lock washers and nuts. *Note:* tighten these bolts enough to flatten the lock washers, about 35 ft. lb. Now tighten the front bolt, installed in step 8 to the torque specifications below.
11. Put the vacuum canister back in its holder and bolt the rear horn in position. The front horn will be attached to the bracket itself in the hole provided for the purpose. Keep the small horn attachment and hardware for replacement should the bracket ever be removed from the vehicle.

12/12/12

BOLT TORQUE REQUIREMENTS

Note: The torque values represented below are intended as general guidelines. Torque requirements for specific applications may vary. Roadmaster does not warrant this information to be accurate for all applications and disclaims all liability for any claims or damages which may result from its use.

STANDARD BOLTS

Thread Size	Grade	Torque
5/16.....	5.....	13 ft./lb.
3/8.....	5.....	23 ft./lb.
7/16.....	5.....	37 ft./lb.
1/2.....	5.....	56 ft./lb.
5/8.....	5.....	150 ft./lb.

METRIC BOLTS

Thread Size	Grade	Plated / Unplated
8mm-1.0.....	8.8.....	20 ft./lb. 18 ft./lb.
8mm-1.25.....	8.8.....	19 ft./lb. 18 ft./lb.
10mm-1.25.....	8.8.....	38 ft./lb. 36 ft./lb.
10mm-1.5.....	8.8.....	37 ft./lb. 35 ft./lb.

METRIC BOLTS

Thread Size	Grade	Plated / Unplated
12mm-1.25.....	8.8.....	70 ft./lb. 65 ft./lb.
12mm-1.5.....	8.8.....	66 ft./lb. 61 ft./lb.
12mm-1.75.....	8.8.....	65 ft./lb. 60 ft./lb.
14mm-2.0.....	8.8.....	104 ft./lb. 97 ft./lb.



BASEPLATE KIT INSTALLATION INSTRUCTIONS

ROADMASTER, Inc. 6110 NE 127th Ave. Vancouver, WA 98682 360-896-0407 fax 360-735-9300 www.roadmasterinc.com

KIT NO. 521227-1

12. Go to the drivers side and hold the driver's side receiver brace in position against the bottom and side of the frame. Check the alignment, make sure that the top of the plate is parallel and matches the passenger side. The front and back of the mounting plate should be in the same position behind the bumper core on both sides. Once this is achieved, clamp in position and drill four 1/2" holes through the frame, three in the side and one in the bottom using the brace as a drill template. Use a backing plate when drilling to prevent damage.
13. Bolt through the brace and the frame with the supplied 1/2" x 5" bolts, plate washers, lock washers and nuts. Note: Tighten these bolts enough to flatten the lock washers, about 35 ft. lb.
14. Reinstall the bumper fascia and grille reversing steps 2 through 6. \
15. Install the front braces by inserting with front braces vertical to the ground, push in and twist down to lock in place. Once locked in and parallel to the ground. Install safety pins.
16. At this point, decide whether to reinstall the lower grilles by trimming to fit or leaving off and saving for reinstallation at a later date. If you want to reinstall, trim the grilles to fit around the braces and snap back in.
17. Mount the tow bar according to the tow bar manufacturers instructions. Install the 10" safety cables to the side of the main receiver portion of the bracket with quick links provided. Attach the other end to the tow vehicle's safety cables.

Hardware list

- 8- 1/2" x 5" bolts
- 1- 1/2" flat washer
- 8- 1/2" nuts
- 8- 1/2" lock washers
- 7- 1/2" plate washers
- 2- 10" safety cables
- 2- quick links
- 2- pins

12/12/12

BOLT TORQUE REQUIREMENTS

Note: The torque values represented below are intended as general guidelines. Torque requirements for specific applications may vary. Roadmaster does not warrant this information to be accurate for all applications and disclaims all liability for any claims or damages which may result from its use.

STANDARD BOLTS

Thread Size	Grade	Torque
5/16.....	5.....	13 ft./lb.
3/8.....	5.....	23 ft./lb.
7/16.....	5.....	37 ft./lb.
1/2.....	5.....	56 ft./lb.
5/8.....	5.....	150 ft./lb.

METRIC BOLTS

Thread Size	Grade	Plated / Unplated
8mm-1.0.....	8.8.....	20 ft./lb. 18 ft./lb.
8mm-1.25.....	8.8.....	19 ft./lb. 18 ft./lb.
10mm-1.25.....	8.8.....	38 ft./lb. 36 ft./lb.
10mm-1.5.....	8.8.....	37 ft./lb. 35 ft./lb.

METRIC BOLTS

Thread Size	Grade	Plated / Unplated
12mm-1.25.....	8.8.....	70 ft./lb. 65 ft./lb.
12mm-1.5.....	8.8.....	66 ft./lb. 61 ft./lb.
12mm-1.75.....	8.8.....	65 ft./lb. 60 ft./lb.
14mm-2.0.....	8.8.....	104 ft./lb. 97 ft./lb.