

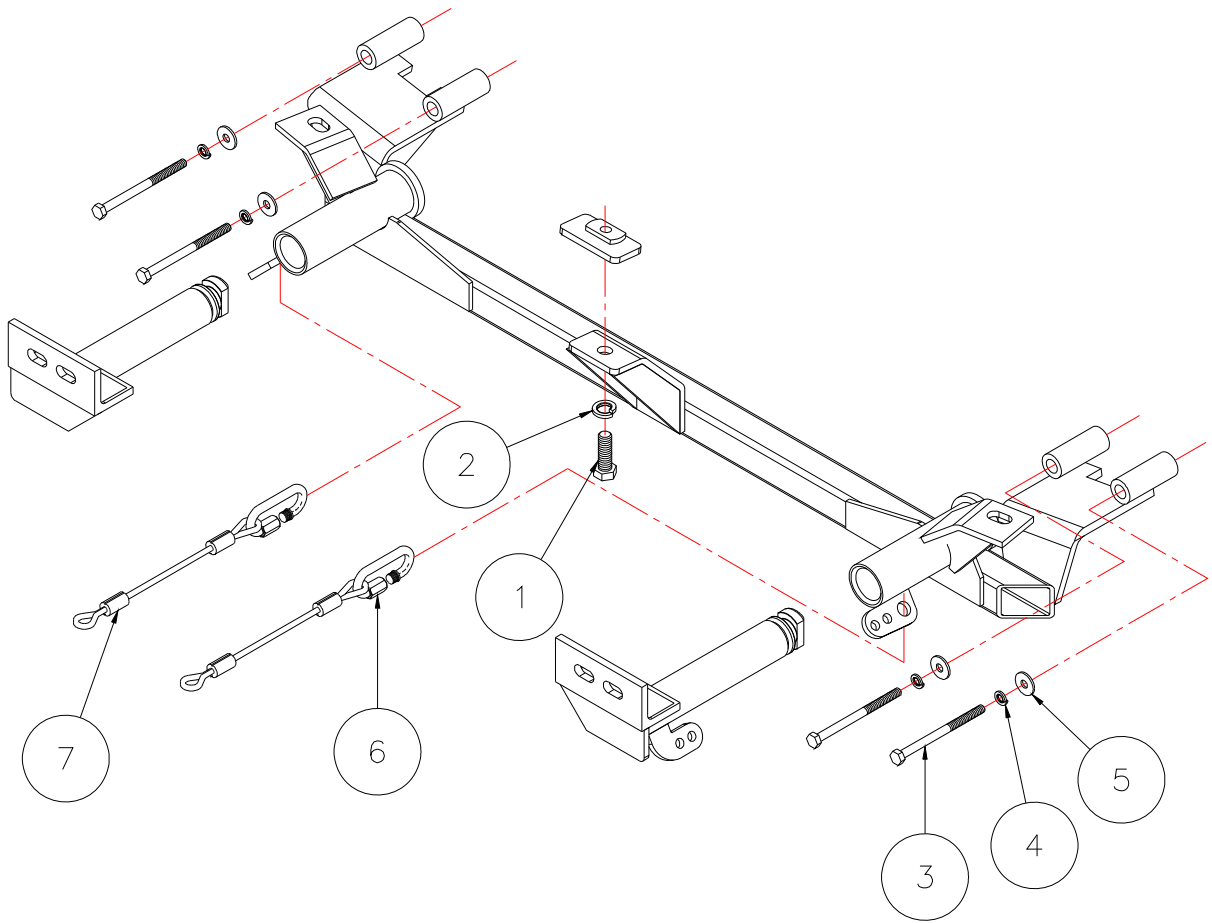


# BASEPLATE KIT INSTALLATION INSTRUCTIONS

**KIT# 521229-1**

05/31/05  
RV

ROADMASTER, Inc. 6110 NE 127th Ave. Vancouver, WA 98682 1-800-669-9690 fax 360-735-9300 www.roadmasterinc.com



Item	Qty.	Length	Width	Description	Part#
1	1	1 1/2"	1/2"	BOLT	350095-00
2	1		1/2"	LOCK WASHER	350309-00
3	4	110mm	8mm	8mm x 1.25 x 110mm BOLT	356009-00
4	4		8mm	LOCK WASHER	355705-00
5	4		8mm	FENDER WASHER	355702-00
6	2			CABLE CONNECTOR	200008-00
7	2	8"		SAFETY CABLE	500646-08

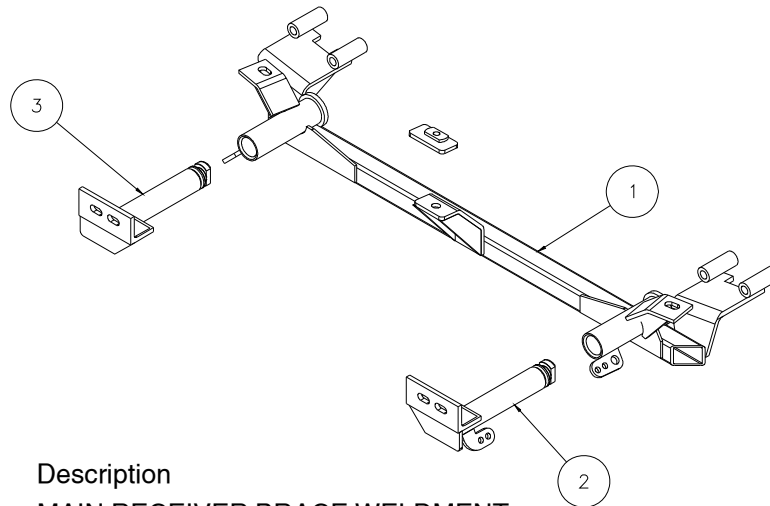


# BASEPLATE KIT INSTALLATION INSTRUCTIONS

**KIT# 521229-1**

05/31/05  
RV

ROADMASTER, Inc. 6110 NE 127th Ave. Vancouver, WA 98682 1-800-669-9690 fax 360-735-9300 www.roadmasterinc.com



Item	Qty.	Part #	Description
1	1	C-001258	MAIN RECEIVER BRACE WELDMENT
2	1	C-001259	DRIVER SIDE ARM TUBE
3	1	C-001260	PASSENGER SIDE ARM TUBE
4	1	C-001261	THREADED BACKING PLATE

**IMPORTANT:** All baseplates **must** be assembled with all the bolts left loose for final adjustment and positioning (before tightening) unless otherwise instructed. All bolts **must** be torqued for proper strength. If more than one bolt is used per fastening point, the diagram may only show one. Use flat washers over all slotted holes and lock washers on all fasteners.

## WARNING

Failure to heed these warnings or follow the installation instructions may result in a voided warranty, loss of towed vehicle, personal injury or death.

- Do not weld or modify this baseplate or its components. Welding or modification will void the warranty.
- Do not use this document as a basis to design/fabricate a baseplate, as it may not show all parts or structural components.
- We strongly recommend professional installation.
- If the towed vehicle has been in an accident, it must be properly repaired before attaching the baseplate. Do not install the baseplate if any structural frame damage is found.
- The installer must use all bolts and parts supplied. If running changes were made by the vehicle manufacturer after this kit was designed, some bolts or other fasteners may no longer be the correct size. It is the installer's responsibility to verify this kit is securely fastened to the vehicle.
- Use Loctite® Red on all bolts used to secure this baseplate. Torque all bolts to the specifications found at the end of these instructions. Do not over-torque the bolts or failure may occur.
- The installer must inspect the baseplate to ensure adequate clearance, particularly around hoses, air conditioner lines, radiators, etc. or non-warranty failure may result.
- Roadmaster manufactures many styles of baseplates. If your baseplate has removable arms, they must be removed before driving the vehicle, unless the arms can be pinned or padlocked in place. If not secured, the arms could vibrate out.
- Some motorhome chassis have such a tight turning radius that you can damage your motorhome, towed vehicle, tow bar or baseplate while turning sharply. Before getting on the road, test your turning radius in an empty parking lot. Turning too sharply could

result in non-warranty damage to your towing system, motorhome and/or towed vehicle.

- Do not back up with the towed vehicle attached or non-warranty damage will occur to your towing system or vehicles.
- The safety cables must connect the towing vehicle to the towed vehicle frame to frame, with the cables crossed, with enough slack for sharp turns. See cable instructions for proper routing. Failure to do so will result in non-warranty damage and/or the loss of the towed vehicle.
- This kit is designed for use with ROADMASTER tow bars and ROADMASTER adapters only. Using this kit with other brands, without an approved ROADMASTER adapter, may result in non-warranty damage or injury.
- Receiver extensions and out-of-level towing situations of 3 inches or more. This can cause the system to swing much higher and lower, causing excessive strain on the tow bar, baseplate and frame. That can cause the towing system to fail, causing property damage, personal injury or even death. If you must use a receiver extension or drop hitch to tow, it will reduce your receiver's weight capacity by 1/3 to avoid damaging your system. Never use more than one extension and/or drop hitch, as this will void your warranty.
- Every 3,000 miles, the owner must inspect all mounting points for cracks or fatigue, and check the fasteners for proper torque, according to the bolt torque requirements chart on the last page of these instructions.
- The owner must follow the vehicle manufacturer's instructions to prepare the vehicle for towing. Failure to do so may cause severe damage to the vehicle.
- This baseplate is only warranted for the original installation. Installing a used baseplate on another vehicle is not recommended and will void the warranty.



# BASEPLATE KIT INSTALLATION INSTRUCTIONS

**KIT# 521229-1**

05/31/05  
RV

ROADMASTER, Inc. 6110 NE 127th Ave. Vancouver, WA 98682 1-800-669-9690 fax 360-735-9300 www.roadmasterinc.com

This is one of our EZ series brackets, which allows the visible front portion of the brackets to be easily removed from the front of the vehicle (Fig.A and Fig.B). The bracket consists of a main receiver brace, two removable front braces and a hardware pack. The main receiver brace mounts to the bumper core and the frame rails. The tubular front braces are inserted into the main receiver brace and rotated 90 degrees to lock them in place.

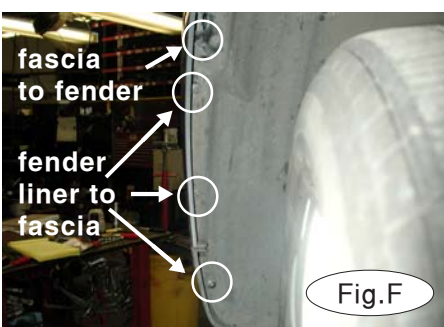
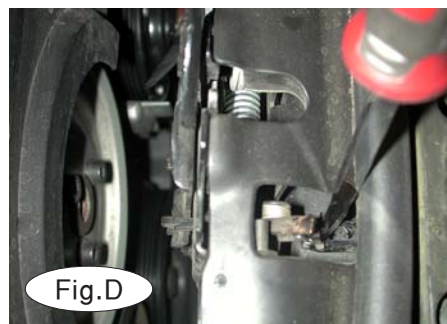
Before starting the installation, lay out the kit components in order, as they will be used. This will give you a visual idea of how the components work, and will also confirm that everything is present and accounted for.

1. **Important: please use all supplied bolts and parts and read all instructions carefully before beginning this installation. The majority of questions you may have can be answered within the text, and proper installation will ensure safe and secure travel.** Now, begin the installation. Start by removing two T27 Torx bolts attaching the grille to the fascia (Fig.C).

2. Next, remove the hood latch release – first, pull up on the retainer clip. Then, insert a screwdriver between the plastic blades and pry them apart (Fig.D).

3. Pull up on the grille, releasing the tabs on either side, and remove the grille.

4. Remove four T27 Torx bolts holding the fascia to the core support (Fig.E).



5. On each side, remove four T25 Torx screws, one holding the fascia to the fender, and three holding the fender liner to the fascia (Fig.F).

6. From the bottom of the vehicle, remove three metal fasteners across the front of the fascia, holding the front of the fascia to the radiator support (Fig.G).

7. Pull forward on each side of the fascia to detach it. Unplug the side marker lights (Fig.H) and fog lights (if the vehicle is so equipped) on each side, and then remove the fascia.

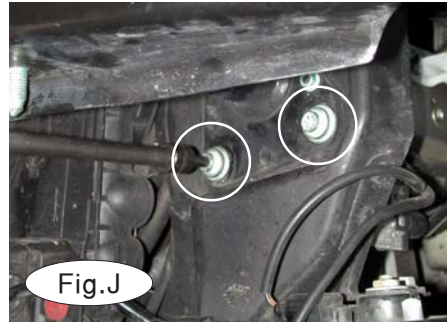
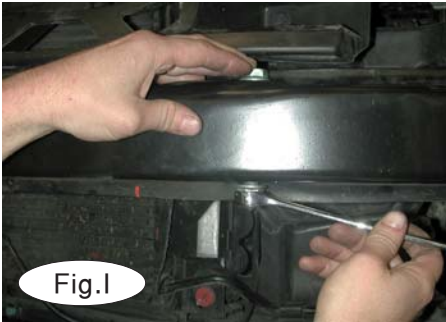


# BASEPLATE KIT INSTALLATION INSTRUCTIONS

**KIT# 521229-1**

05/31/05  
RV

ROADMASTER, Inc. 6110 NE 127th Ave. Vancouver, WA 98682 1-800-669-9690 fax 360-735-9300 www.roadmasterinc.com



8. On each side, remove the 18mm (head) nut on the bolt which is holding the bumper core to the bumper support (Fig.I).

9. Remove the two lower bumper support mounting bolts (T45 Torx head) on each side (Fig.J).

10. Before fitting the main receiver brace, trim a section of the air deflectors (on each side) so that the brace will fit over the air deflectors. Hold the main receiver brace over the air deflectors and trim enough material to accommodate the brace. Figure K shows the approximate amount to trim from each air deflector.



11. Lift the main receiver brace up into place, so that the pre-drilled holes at each end of the main receiver brace align over the bolts holding the bumper core to the bumper support (Step 8). Apply thread lock to the factory nuts you removed in Step 8 and screw them back into place (Fig.L). Finger-tighten only at this time.

12. Attach the main receiver brace to the frame rails – Apply thread lock to the four supplied 8mm x 1.25 x 100mm bolts. Then, on each side of the main receiver brace, screw two of the bolts, with flat washers and lock washers, through the pre-drilled holes in the main receiver brace and into the holes for the bolts you removed in Step 9, and then through the bumper support and into the frame rail (Fig.M)

13. Torque all bolts to the specifications at the bottom of these instructions.

14. Attach the center of the main receiver brace to the bumper core – Using the hole in the center of the main receiver brace as a template, drill a 1/2" hole through the bumper core (Fig.N).

15. From behind the bumper core, position the supplied 1/4" x 1-1/8" x 3" nutted backing plate so that the hole in the backing plate aligns over the hole you drilled in the preceding step. Use the supplied 1/2" x 1 1/4" bolt and lock washer to secure the backing plate in place (Fig.O).



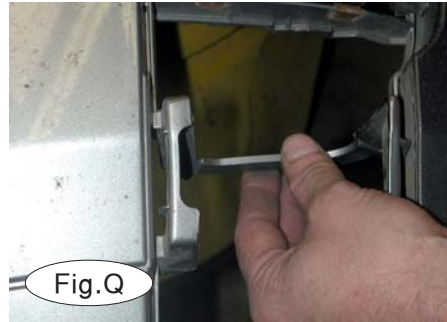
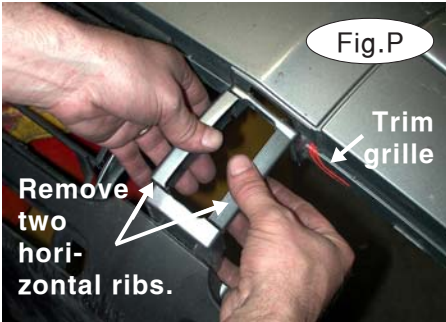


# BASEPLATE KIT INSTALLATION INSTRUCTIONS

**KIT# 521229-1**

05/31/05  
RV

ROADMASTER, Inc. 6110 NE 127th Ave. Vancouver, WA 98682 1-800-669-9690 fax 360-735-9300 www.roadmasterinc.com



16. Before re-attaching the fascia, trim both side grilles so that the removable front braces can extend through them. First, remove the side grilles by pulling forward on them. On the driver side, remove two horizontal ribs as indicated in Figure P, plus a small area indicated in orange. On the passenger side, remove one horizontal rib (Fig.Q).

Next, using a die grinder and/or a hole saw, cut away the area indicated in Figure R on each side grille.

17. Reattach the fascia, reversing steps 1 through 7.

18. Insert the front braces into the main receiver brace and twist each one 90 degrees to lock. Attach the safety cables with the cable connectors (Q-Links) to the front of the receiver braces (Fig.S). Attach the ends of the safety cables to the tow vehicle's safety cables and tow bar.

19. Install the tow bar to the mounting bracket according to the manufacturer's instructions.



## BOLT TORQUE REQUIREMENTS

Note: The torque values represented below are intended as general guidelines. Torque requirements for specific applications may vary. Roadmaster does not warrant this information to be accurate for all applications and disclaims all liability for any claims or damages which may result from its use.

### STANDARD BOLTS

Thread Size	Grade	Torque
5/16	5	13 ft./lb.
3/8	5	23 ft./lb.
7/16	5	37 ft./lb.
1/2	5	56 ft./lb.
5/8	5	150 ft./lb.

### METRIC BOLTS

Thread Size	Grade	Plated / Unplated
8mm-1.0	8.8	20 ft./lb. 18 ft./lb.
8mm-1.25	8.8	19 ft./lb. 18 ft./lb.
10mm-1.25	8.8	38 ft./lb. 36 ft./lb.
10mm-1.5	8.8	37 ft./lb. 35 ft./lb.

### METRIC BOLTS

Thread Size	Grade	Plated / Unplated
12mm-1.25	8.8	70 ft./lb. 65 ft./lb.
12mm-1.5	8.8	66 ft./lb. 61 ft./lb.
12mm-1.75	8.8	65 ft./lb. 60 ft./lb.
14mm-2.0	8.8	104 ft./lb. 97 ft./lb.

All illustrations and specifications contained herein are based on the latest information available at the time of publication approval. ROADMASTER, INC. reserves the right to make changes at any time without notice in material, specification and models or to discontinue models.