

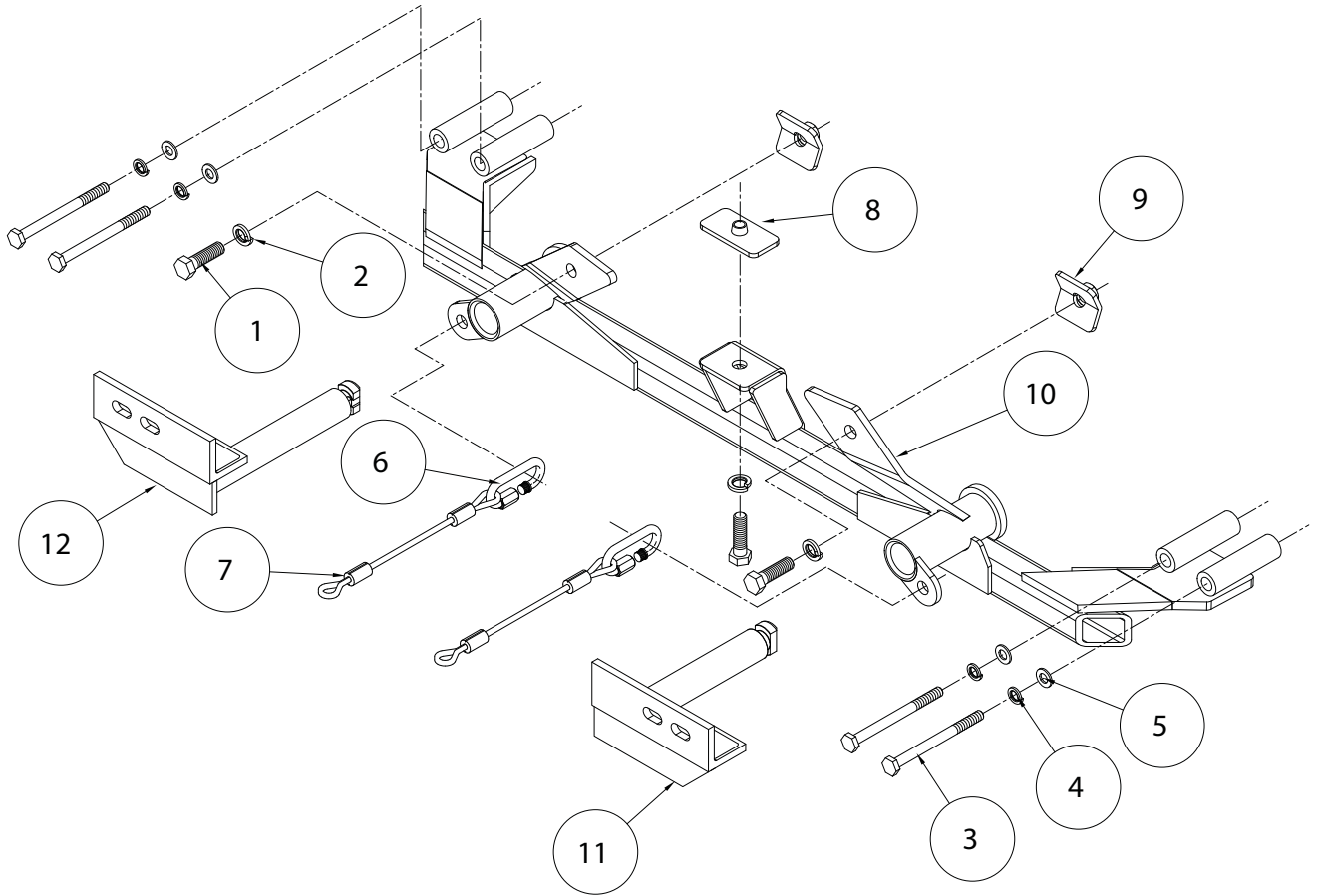


# BASEPLATE KIT INSTALLATION INSTRUCTIONS

**KIT# 521235-1**

12/20/11  
KS

ROADMASTER, Inc. 6110 NE 127th Ave. Vancouver, WA 98682 1-800-669-9690 fax 360-735-9300 www.roadmasterinc.com



ITEM	QTY	NAME	MATERIAL
1.....	3.....	1/2" x 1 3/4" BOLT .....	350096-00
2.....	3.....	1/2" LOCK WASHER.....	350309-00
3.....	4.....	10mm x 1.50 x 120 mm BOLT.....	356121-00
4.....	4.....	10mm LOCK WASHER.....	355715-00
5.....	4.....	10mm FLAT WASHER .....	355710-00
6.....	2.....	QUICK LINK .....	200008-00
7.....	2.....	SAFETY CABLE 8" .....	650646-08
8.....	1.....	3/16" x 1 1/2" x 3" THREADED BACKING PLATE.....	A-003079
9.....	2.....	BENT THREADED BACKING PLATE.....	C-001857
10.....	1.....	MAIN RECEIVER .....	C-002005
11.....	1.....	DRIVER SIDE ARM .....	C-001859
12.....	1.....	PASSENGER SIDE ARM.....	C-001860



# BASEPLATE KIT INSTALLATION INSTRUCTIONS

**KIT# 521235-1**

12/20/11  
KS

ROADMASTER, Inc. 6110 NE 127th Ave. Vancouver, WA 98682 1-800-669-9690 fax 360-735-9300 www.roadmasterinc.com

This is one of our EZ2 series brackets, which allows the visible front portion of the bracket to be easily removed from the front of the vehicle (Fig.A and Fig.B). The bracket consists of a main receiver brace, two removable front braces and a hardware pack.

The main receiver brace mounts to the frame rails and the bumper core. The removable front braces install in the main receiver brace.

Before starting the installation, lay out the kit components in order, as they will be used. This will give you a visual idea of how the components work, and will also confirm that everything is present and accounted for.



Fig.A



Fig.B

**IMPORTANT:** All baseplates **must** be assembled with all the bolts left loose for final adjustment and positioning (before tightening) unless otherwise instructed. All bolts **must** be torqued for proper strength. If more than one bolt is used per fastening point, the diagram may only show one. Use flat washers over all slotted holes and lock washers on all fasteners.

## WARNING

Failure to heed these warnings or follow the installation instructions may result in a voided warranty, loss of towed vehicle, personal injury or death.

- Do not weld or modify this baseplate or its components. Welding or modification will void the warranty.
- Do not use this document as a basis to design/fabricate a baseplate, as it may not show all parts or structural components.
- We strongly recommend professional installation.
- If the towed vehicle has been in an accident, it must be properly repaired before attaching the baseplate. Do not install the baseplate if any structural frame damage is found.
- The installer must use all bolts and parts supplied. If running changes were made by the vehicle manufacturer after this kit was designed, some bolts or other fasteners may no longer be the correct size. It is the installer's responsibility to verify this kit is securely fastened to the vehicle.
- Use Loctite® Red on all bolts used to secure this baseplate. Torque all bolts to the specifications found at the end of these instructions. Do not over-torque the bolts or failure may occur.
- The installer must inspect the baseplate to ensure adequate clearance, particularly around hoses, air conditioner lines, radiators, etc. or non-warranty failure may result.
- Roadmaster manufactures many styles of baseplates. If your baseplate has removable arms, they must be removed before driving the vehicle, unless the arms can be pinned or padlocked in place. If not secured, the arms could vibrate out.
- Some motorhome chassis have such a tight turning radius that you can damage your motorhome, towed vehicle, tow bar or baseplate while turning sharply. Before getting on the road, test your turning radius in an empty parking lot. Turning too sharply could

result in non-warranty damage to your towing system, motorhome and/or towed vehicle.

- Do not back up with the towed vehicle attached or non-warranty damage will occur to your towing system or vehicles.
- The safety cables must connect the towing vehicle to the towed vehicle frame to frame, with the cables crossed, with enough slack for sharp turns. See cable instructions for proper routing. Failure to do so will result in non-warranty damage and/or the loss of the towed vehicle.
- This kit is designed for use with ROADMASTER tow bars and ROADMASTER adapters only. Using this kit with other brands, without an approved ROADMASTER adapter, may result in non-warranty damage or injury.
- Receiver extensions and out-of-level towing situations of 3 inches or more. This can cause the system to swing much higher and lower, causing excessive strain on the tow bar, baseplate and frame. That can cause the towing system to fail, causing property damage, personal injury or even death. If you must use a receiver extension or drop hitch to tow, it will reduce your receiver's weight capacity by 1/3 to avoid damaging your system. Never use more than one extension and/or drop hitch, as this will void your warranty.
- Every 3,000 miles, the owner must inspect all mounting points for cracks or fatigue, and check the fasteners for proper torque, according to the bolt torque requirements chart on the last page of these instructions.
- The owner must follow the vehicle manufacturer's instructions to prepare the vehicle for towing. Failure to do so may cause severe damage to the vehicle.
- This baseplate is only warranted for the original installation. Installing a used baseplate on another vehicle is not recommended and will void the warranty.



# BASEPLATE KIT INSTALLATION INSTRUCTIONS

**KIT# 521235-1**

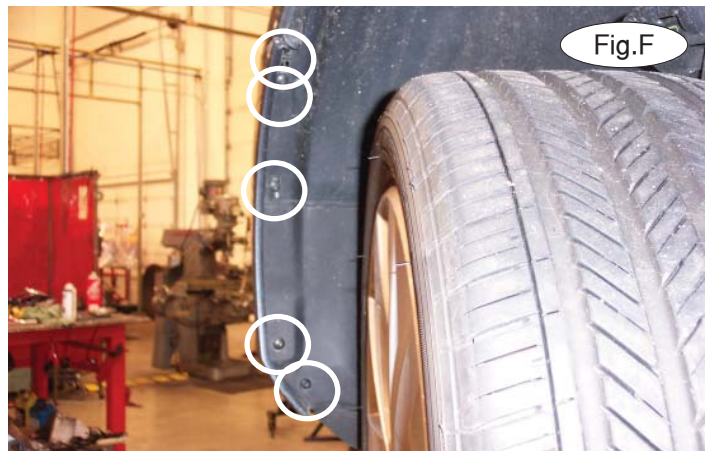
12/20/11  
KS

ROADMASTER, Inc. 6110 NE 127th Ave. Vancouver, WA 98682 1-800-669-9690 fax 360-735-9300 www.roadmasterinc.com



1. **Important:** please use all supplied bolts and parts and read all instructions carefully before beginning this installation. The majority of questions you may have can be answered within the text, and proper installation will ensure safe and secure travel. Now, begin the installation. Remove four T20 Torx screws attaching the grille to the top of the core support (Fig.C).

2. Pull forward to remove the grille (Fig.D).



3. On each side, remove one T20 Torx screw attaching the grille to the upper fascia to the core support (Fig.E – driver's side).

4. On each side, remove four T20 Torx screws attaching the fascia to the fender liner and one T20 Torx attaching the fender to the fascia (Fig.F).

5. On each side, remove four T20 Torx screws attaching the bottom of the fascia to the core support and fender liner (Fig.G – driver's side).



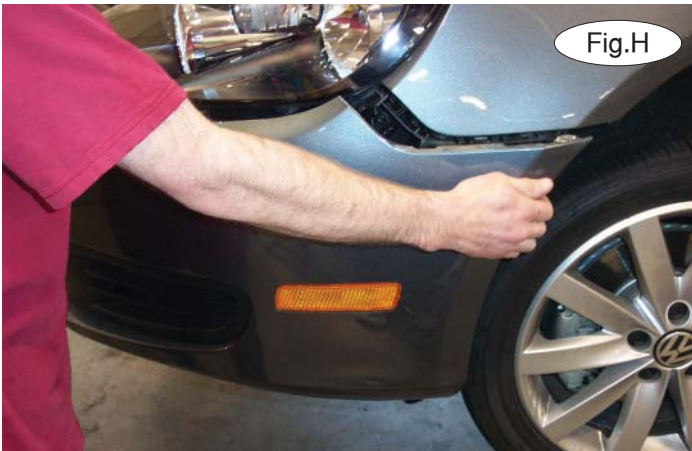


# BASEPLATE KIT INSTALLATION INSTRUCTIONS

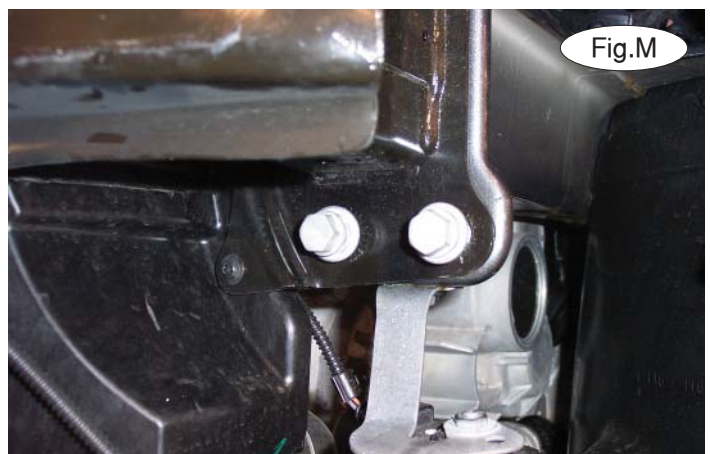
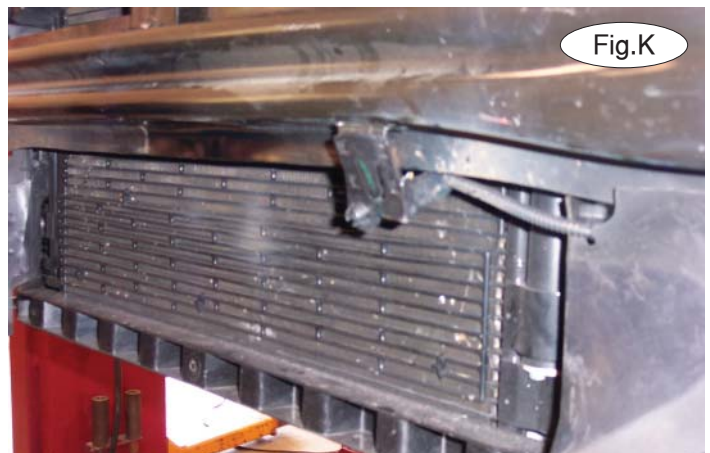
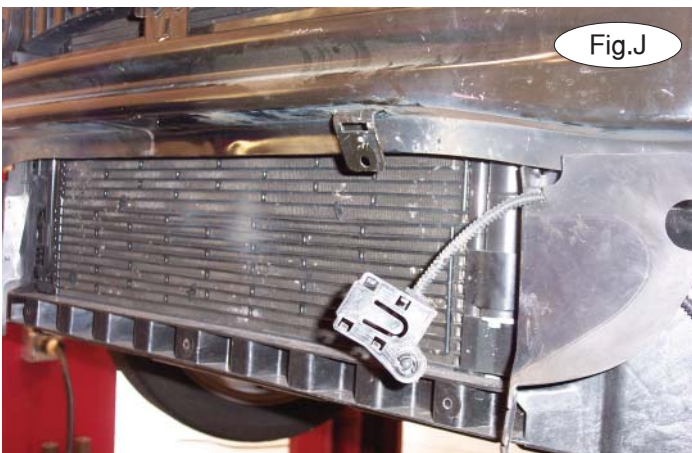
**KIT# 521235-1**

12/20/11  
KS

ROADMASTER, Inc. 6110 NE 127th Ave. Vancouver, WA 98682 1-800-669-9690 fax 360-735-9300 www.roadmasterinc.com



6. Pull out and forward on the corners of the fascia to remove it (Fig.H)
7. Pull out and forward to remove the shock absorption pad (Fig.I).
8. Bend the ambient temperature sensor back about 30 degrees and then remount it (Fig.K).



9. **On Golf models:** trim the air deflector on each side using the yellow line in Figure L as a guide for trimming.
10. On each side, remove the two lower 16mm (head) bumper core mounting bolts (Fig.M – driver's side). These bolts will not be replaced. *Note:* retain the bolts so they can be replaced if the bracket is ever removed.

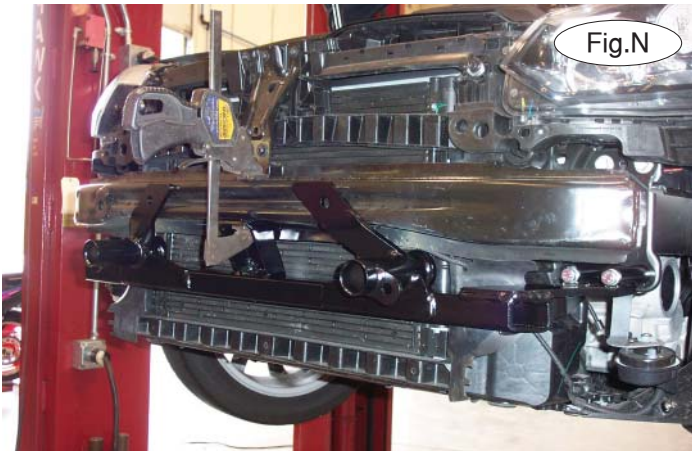


# BASEPLATE KIT INSTALLATION INSTRUCTIONS

**KIT# 521235-1**

12/20/11  
KS

ROADMASTER, Inc. 6110 NE 127th Ave. Vancouver, WA 98682 1-800-669-9690 fax 360-735-9300 www.roadmasterinc.com



11. Place the main receiver brace over the ends of the frame rails and on each side, bolt it into place using two of the supplied 10mm x 1.5 x 120mm bolts and 10mm flat washers and lock washers. Clamp the center mounting point to the bumper core and then torque the four mounting bolts to the bolt torque requirements found at the end of this document (Fig.N).

12. Remove the clamp. Using a 1/2" drill and the three remaining mounting points as templates, drill holes through the bumper core (Fig.O). If you experience difficulty in drilling due to the hard composition of the bumper core, drill a pilot hole first. Make certain you use a sharp drill bit. *Note:* use a piece of metal as a buffer between the drill bit and the engine components.



13. Place the 3/16" x 1 1/2" x 3" threaded backing plate inside the bumper core over the center mounting point (Fig.P), and using one of the supplied 1/2" x 1 3/4" bolts and 1/2" lock washers, bolt through the main receiver brace, bumper core and into the backing plate (Fig.Q).

14. Tighten the center mounting point bolt to the bolt torque requirements found at the end of this document.

15. On each side, place a 1/4" x 2" x 2" bent threaded backing plate over the hole you drilled in step 12. Using one of the supplied 1/2" x 1 3/4" bolts and 1/2" lock washers, bolt through the main receiver brace, bumper core and into the backing plate (Fig.R – driver's side).





# BASEPLATE KIT INSTALLATION INSTRUCTIONS

**KIT# 521235-1**

12/20/11  
KS

ROADMASTER, Inc. 6110 NE 127th Ave. Vancouver, WA 98682 1-800-669-9690 fax 360-735-9300 www.roadmasterinc.com

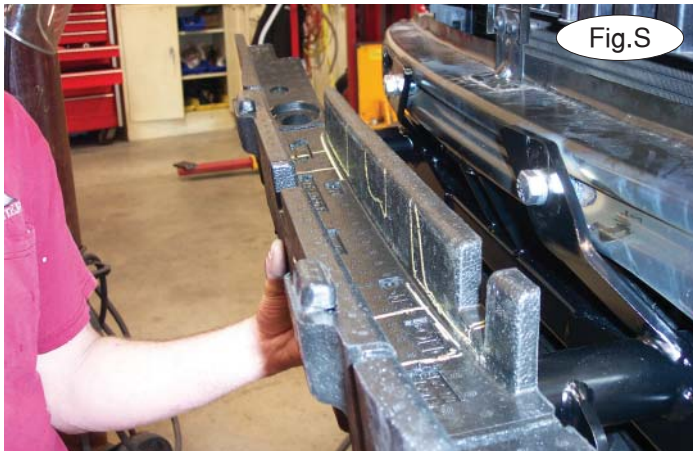


Fig.S



Fig.T

16. Hold the shock absorption pad in place over the main receiver brace and mark it for trimming. Use the yellow lines in Figure S as a guide for trimming.

17. Tighten all bolts to the torque specifications found at the end of these instructions.

18. **For Jetta Sportwagen models:** trim each side of the fascia using the trim pattern in Figure T (driver's side) as a guide for trimming. **For GTI models:** trim each side of the fascia using the trim pattern in Figure U (driver's side) as a guide for trimming. **For Golf models:** use the yellow lines in Figure V as a guide for trimming.



Fig.U

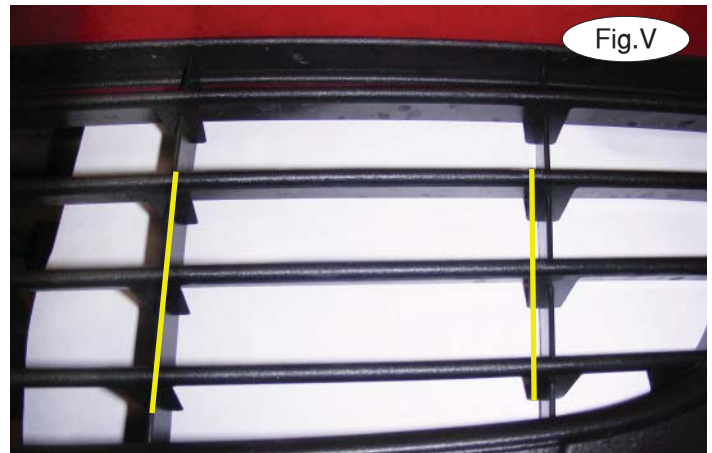


Fig.V

19. Reassemble the fascia, reversing steps 1 through 6.

20. Insert the removable front bracket arms into the front receiver braces, and twist each one 90 degrees to lock.

21. Attach the 8" safety cables with the cable connectors (Q-Links) to the bottom cross bar of the main receiver brace (Fig.W).



Fig.W



# BASEPLATE KIT INSTALLATION INSTRUCTIONS

**KIT# 521235-1**

12/20/11  
KS

ROADMASTER, Inc. 6110 NE 127th Ave. Vancouver, WA 98682 1-800-669-9690 fax 360-735-9300 www.roadmasterinc.com

- 22. Attach the ends of the safety cables to the tow vehicle's safety cables.
- 23. Install the tow bar to the mounting bracket according to the manufacturer's instructions.

## BOLT TORQUE REQUIREMENTS

Note: The torque values represented below are intended as general guidelines. Torque requirements for specific applications may vary. Roadmaster does not warrant this information to be accurate for all applications and disclaims all liability for any claims or damages which may result from its use.

### STANDARD BOLTS

Thread Size	Grade	Torque
5/16.....	5.....	13 ft./lb.
3/8.....	5.....	23 ft./lb.
7/16.....	5.....	37 ft./lb.
1/2.....	5.....	56 ft./lb.
5/8.....	5.....	150 ft./lb.

### METRIC BOLTS

Thread Size	Grade	Plated / Unplated
8mm-1.0 .....	8.8 .....	20 ft./lb. 18 ft./lb.
8mm-1.25 .....	8.8 .....	19 ft./lb. 18 ft./lb.
10mm-1.25 .....	8.8 .....	38 ft./lb. 36 ft./lb.
10mm-1.5 .....	8.8 .....	37 ft./lb. 35 ft./lb.

### METRIC BOLTS

Thread Size	Grade	Plated / Unplated
12mm-1.25 .....	8.8 .....	70 ft./lb. 65 ft./lb.
12mm-1.5 .....	8.8 .....	66 ft./lb. 61 ft./lb.
12mm-1.75 .....	8.8 .....	65 ft./lb. 60 ft./lb.
14mm-2.0 .....	8.8 .....	104 ft./lb. 97 ft./lb.

All illustrations and specifications contained herein are based on the latest information available at the time of publication approval. ROADMASTER, INC. reserves the right to make changes at any time without notice in material, specification and models or to discontinue models.