

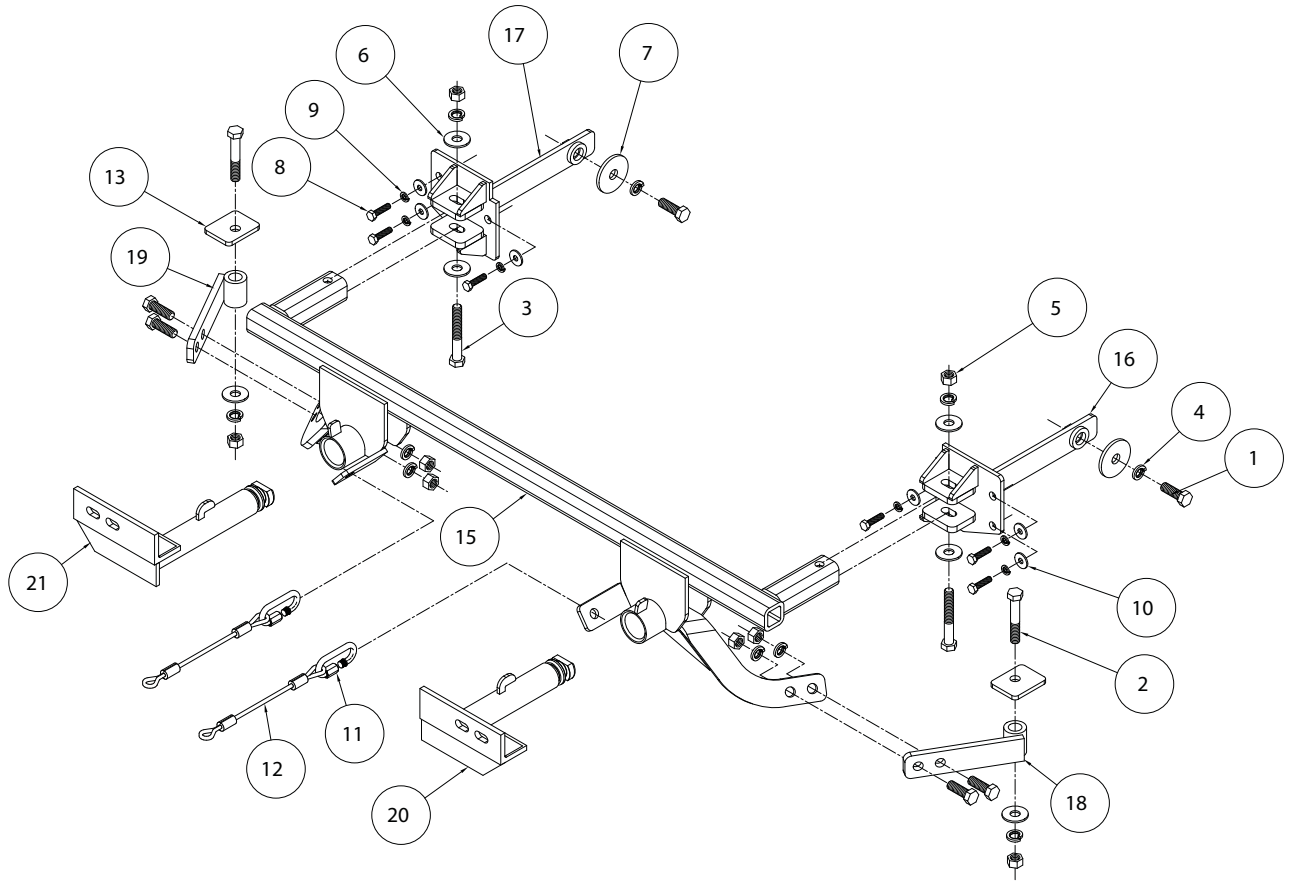


BASEPLATE KIT INSTALLATION INSTRUCTIONS

KIT# 521563-1

04/21/10
KS

ROADMASTER, Inc. 6110 NE 127th Ave. Vancouver, WA 98682 1-800-669-9690 fax 360-735-9300 www.roadmasterinc.com



ITEM	QTY	NAME	MATERIAL
1	6	1/2" X 1 1/2" BOLT	350095-00
2	2	1/2" x 3" BOLT	350101-00
3	2	1/2" x 3 1/2" BOLT	350103-00
4	10	1/2" LOCK WASHER	350309-00
5	10	1/2" HEX NUT	350258-00
6	6	1/2" FLAT WASHER	350308-20
7	2	1/2" PLATE WASHER	100034-01
8	6	8mm x 1.25 x 30 mm BOLT	356001-00
9	6	8mm LOCK WASHER	355705-00
10	6	8mm FENDER WASHER	355702-00
11	2	QUICK LINK	200008-00
12	2	8" SAFETY CABLE	650646-08
13	2	3/16" x 2" x 2 1/2" BACKING PLATE	A-002161
14	2	ZIP TIES BLACK	300140-8
15	1	MAIN RECEIVER	C-001343
16	1	DRIVER SIDE BRACE	C-001346
17	1	PASSENGER SIDE BRACE	C-001347
18	1	DRIVER SIDE LOWER BRACE	C-001348
19	1	PASSENGER SIDE LOWER BRACE	C-001349
20	1	DRIVER SIDE ARM	C-001985
21	1	PASSENGER SIDE ARM	C-001986



BASEPLATE KIT INSTALLATION INSTRUCTIONS

KIT# 521563-1

04/21/10
KS

ROADMASTER, Inc. 6110 NE 127th Ave. Vancouver, WA 98682 1-800-669-9690 fax 360-735-9300 www.roadmasterinc.com

This is one of our EZ series brackets, which allows the visible front portion of the bracket to be easily removed from the front of the vehicle (Fig.A and Fig.B). The bracket consists of a main receiver brace, two upper braces, two lower braces, two removable front braces, and a hardware pack. The main receiver braces mount to the frame rails and the bumper core. The lower braces mount to the frame cross bar and the main receiver braces. The removable front braces install in the main receiver braces. Before starting the installation, lay out the kit components in order, as they will be used. This will give you a visual idea of how the components work, and will also confirm that everything is present and accounted for.



Fig.A



Fig.B

IMPORTANT: All baseplates **must** be assembled with all the bolts left loose for final adjustment and positioning (before tightening) unless otherwise instructed. All bolts **must** be torqued for proper strength. If more than one bolt is used per fastening point, the diagram may only show one. Use flat washers over all slotted holes and lock washers on all fasteners.

WARNING

Failure to heed these warnings or follow the installation instructions may result in a voided warranty, loss of towed vehicle, personal injury or death.

- Do not weld or modify this baseplate or its components. Welding or modification will void the warranty.
- Do not use this document as a basis to design/fabricate a baseplate, as it may not show all parts or structural components.
- We strongly recommend professional installation.
- If the towed vehicle has been in an accident, it must be properly repaired before attaching the baseplate. Do not install the baseplate if any structural frame damage is found.
- The installer must use all bolts and parts supplied. If running changes were made by the vehicle manufacturer after this kit was designed, some bolts or other fasteners may no longer be the correct size. It is the installer's responsibility to verify this kit is securely fastened to the vehicle.
- Use Loctite® Red on all bolts used to secure this baseplate. Torque all bolts to the specifications found at the end of these instructions. Do not over-torque the bolts or failure may occur.
- The installer must inspect the baseplate to ensure adequate clearance, particularly around hoses, air conditioner lines, radiators, etc. or non-warranty failure may result.
- Roadmaster manufactures many styles of baseplates. If your baseplate has removable arms, they must be removed before driving the vehicle, unless the arms can be pinned or padlocked in place. If not secured, the arms could vibrate out.
- Some motorhome chassis have such a tight turning radius that you can damage your motorhome, towed vehicle, tow bar or baseplate while turning sharply. Before getting on the road, test your turning radius in an empty parking lot. Turning too sharply could result in non-warranty damage to your towing system, motorhome and/or towed vehicle.
- Do not back up with the towed vehicle attached or non-warranty damage will occur to your towing system or vehicles.
- The safety cables must connect the towing vehicle to the towed vehicle frame to frame, with the cables crossed, with enough slack for sharp turns. See cable instructions for proper routing. Failure to do so will result in non-warranty damage and/or the loss of the towed vehicle.
- This kit is designed for use with ROADMASTER tow bars and ROADMASTER adapters only. Using this kit with other brands, without an approved ROADMASTER adapter, may result in non-warranty damage or injury.
- Receiver extensions and out-of-level towing situations of 3 inches or more. This can cause the system to swing much higher and lower, causing excessive strain on the tow bar, baseplate and frame. That can cause the towing system to fail, causing property damage, personal injury or even death. If you must use a receiver extension or drop hitch to tow, it will reduce your receiver's weight capacity by 1/3 to avoid damaging your system. Never use more than one extension and/or drop hitch, as this will void your warranty.
- Every 3,000 miles, the owner must inspect all mounting points for cracks or fatigue, and check the fasteners for proper torque, according to the bolt torque requirements chart on the last page of these instructions.
- The owner must follow the vehicle manufacturer's instructions to prepare the vehicle for towing. Failure to do so may cause severe damage to the vehicle.
- This baseplate is only warranted for the original installation. Installing a used baseplate on another vehicle is not recommended and will void the warranty.



BASEPLATE KIT INSTALLATION INSTRUCTIONS

KIT# 521563-1

04/21/10
KS

ROADMASTER, Inc. 6110 NE 127th Ave. Vancouver, WA 98682 1-800-669-9690 fax 360-735-9300 www.roadmasterinc.com



1. **Important:** please use all supplied bolts and parts and read all instructions carefully before beginning this installation. The majority of questions you may have can be answered within the text, and proper installation will ensure safe and secure travel. Now, begin the installation. Start by removing four plastic fasteners attaching the radiator cover to the core support (Fig.C). Then remove the radiator cover.

2. Remove one 5mm (head) Allen bolts attaching the fascia to the core support (Fig.D). Repeat for the other side.



3. On both sides, remove one Phillips (head) screw attaching the corner of the fascia to the fender (Fig.E).

4. Next, on the underside of the fascia, remove eight plastic fasteners attaching the splash shield to the fascia (Fig.F). *Note:* remove only the row of fasteners closest to the rear of the car. Now, for both sides, remove three plastic fasteners attaching the fender liner to the fascia.

5. To remove the fascia pull out and forward on both corners (Fig.G).





BASEPLATE KIT INSTALLATION INSTRUCTIONS

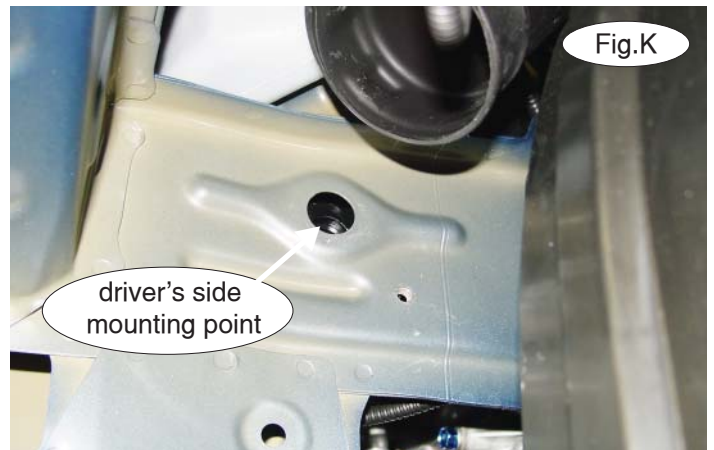
KIT# 521563-1

04/21/10
KS

ROADMASTER, Inc. 6110 NE 127th Ave. Vancouver, WA 98682 1-800-669-9690 fax 360-735-9300 www.roadmasterinc.com



6. On both sides, remove three 12mm (head) bolts attaching the bumper core mounts to the end of the frame rails (Fig.H). Then remove the bumper core and the bumper core mounts. The bumper core and bumper core mounts will not be reassembled. *Note:* the main receiver brace will replace the bumper core; however, retain the bumper core and attachment hardware so that it can be replaced if the bracket is ever removed.

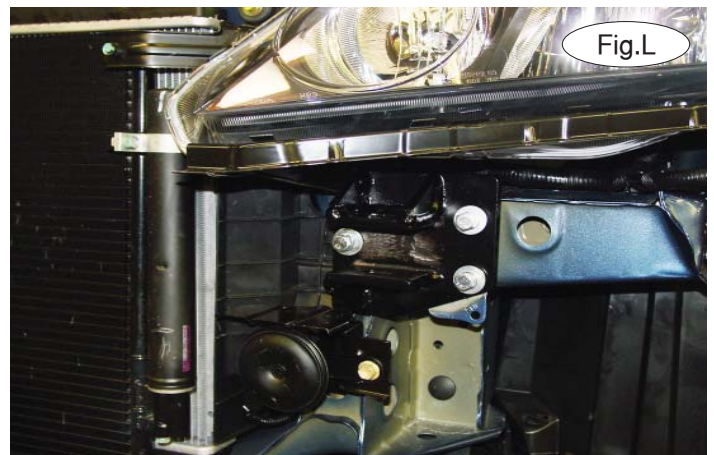


7. Remove two 10mm (head) bolts to remove the air box (Fig.I).

8. Starting with the passenger's side, insert the upper brace into the frame rail (Fig.J). Using the 1/2" x 1 1/2" bolt, lock washer and plate washer, bolt the upper brace into place through the existing hole located towards the rear of the frame rail (Fig.K). Repeat for the other side. *Note:* the driver's side upper brace bolts through the outside of the frame rail (Fig.K); the passenger's side upper brace bolts through the inside of the frame rail through the engine compartment.

9. Using the three 8mm x .125 x 30mm bolts, fender washers and lock washers, bolt one of the upper braces to the end of the frame rail (Fig.L) Repeat for the other side.

10. Starting with the 8mm bolts on the front, tighten the upper braces to the torque specifications listed at the end of these instructions.





BASEPLATE KIT INSTALLATION INSTRUCTIONS

KIT# 521563-1

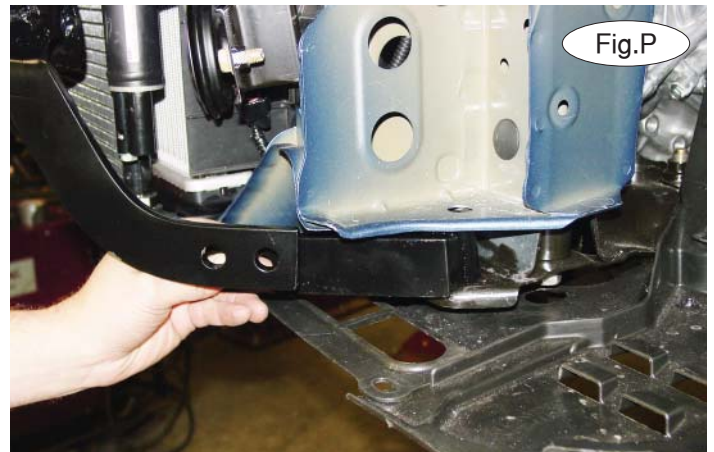
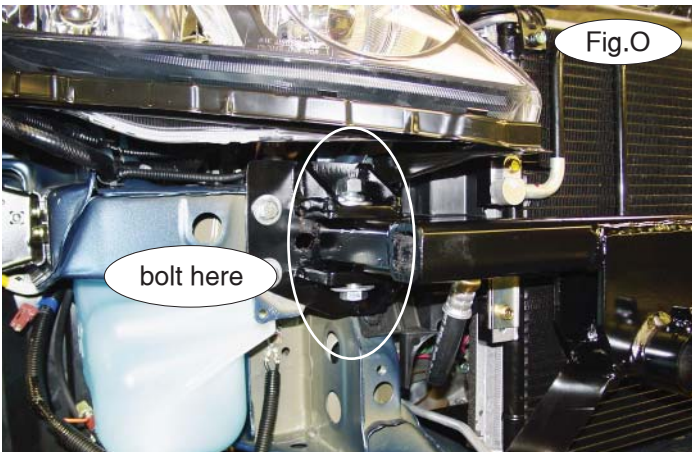
04/21/10
KS

ROADMASTER, Inc. 6110 NE 127th Ave. Vancouver, WA 98682 1-800-669-9690 fax 360-735-9300 www.roadmasterinc.com

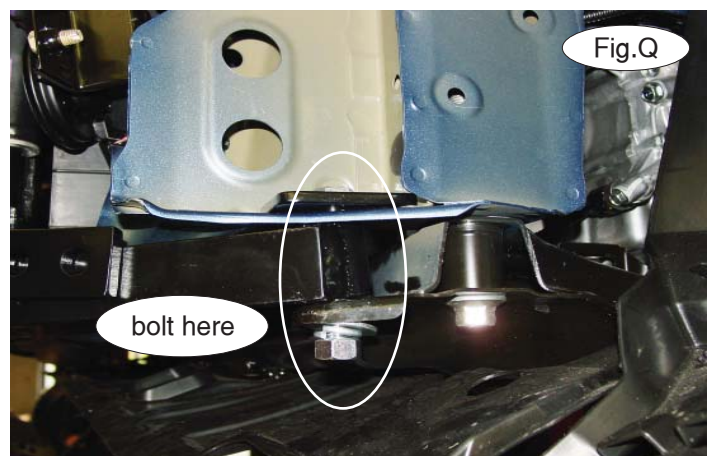


11. Now, position the main receiver brace to attach to the upper braces (Fig.M). *Note:* make certain that the air conditioning line does not contact the brace (Fig.N). If it does, bend it up slightly and out of the way.

12. On both sides, bolt the main receiver brace to the upper braces using the supplied $\frac{1}{2}$ " x $3\frac{1}{2}$ " bolts, four flat washers (two per side), lock washers and nuts (Fig.O).



13. Next, insert one of the lower braces between the bottom of the core support and the sub frame (Fig.P). Bolt into place using the supplied $\frac{1}{4}$ " x 2" x $2\frac{1}{2}$ " backing plate (with a $\frac{9}{16}$ " hole), $\frac{1}{2}$ " x 3" bolt, flat washer, lock washer and nut (Fig.Q). Repeat for the other side.



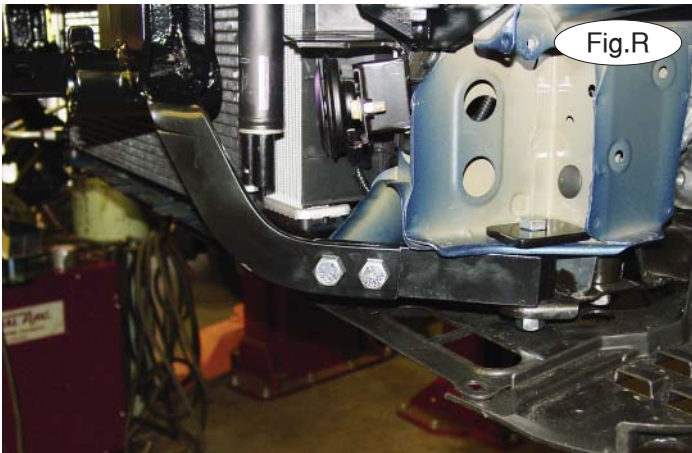


BASEPLATE KIT INSTALLATION INSTRUCTIONS

KIT# 521563-1

04/21/10
KS

ROADMASTER, Inc. 6110 NE 127th Ave. Vancouver, WA 98682 1-800-669-9690 fax 360-735-9300 www.roadmasterinc.com



14. Bolt one of the lower braces to the lower support arm on the main brace using two 1/2" x 1 1/2" bolts, lock washers and nuts (Fig.R). Repeat for the other side.

15. Torque all remaining bolts to the bolt torque specifications found at the end of these instructions.



16. Using the yellow lines as a guide, trim the upper edge of the grille on both the driver's (Fig.S) and passenger side (Fig.T) to allow clearance for the stop tab.

17. Reassemble the fascia, reversing steps 1 through 5.

18. Insert the removable front bracket arms into the front receiver braces, and twist each one 90 degrees to lock.

19. Attach the 8" safety cables with the cable connectors (Q-Links) to the front of the receiver braces.

20. Attach the ends of the safety cables to the tow vehicle's safety cables. Install the tow bar to the mounting bracket according to the manufacturer's instructions.

BOLT TORQUE REQUIREMENTS

Note: The torque values represented below are intended as general guidelines. Torque requirements for specific applications may vary. Roadmaster does not warrant this information to be accurate for all applications and disclaims all liability for any claims or damages which may result from its use.

STANDARD BOLTS

Thread Size	Grade	Torque
5/16.....	5.....	13 ft./lb.
3/8.....	5.....	23 ft./lb.
7/16.....	5.....	37 ft./lb.
1/2.....	5.....	56 ft./lb.
5/8.....	5.....	150 ft./lb.

METRIC BOLTS

Thread Size	Grade	Plated / Unplated
8mm-1.0	8.8	20 ft./lb. 18 ft./lb.
8mm-1.25	8.8	19 ft./lb. 18 ft./lb.
10mm-1.25	8.8	38 ft./lb. 36 ft./lb.
10mm-1.5	8.8	37 ft./lb. 35 ft./lb.

METRIC BOLTS

Thread Size	Grade	Plated / Unplated
12mm-1.25	8.8	70 ft./lb. 65 ft./lb.
12mm-1.5	8.8	66 ft./lb. 61 ft./lb.
12mm-1.75	8.8	65 ft./lb. 60 ft./lb.
14mm-2.0	8.8	104 ft./lb. 97 ft./lb.

All illustrations and specifications contained herein are based on the latest information available at the time of publication approval. ROADMASTER, INC. reserves the right to make changes at any time without notice in material, specification and models or to discontinue models.