

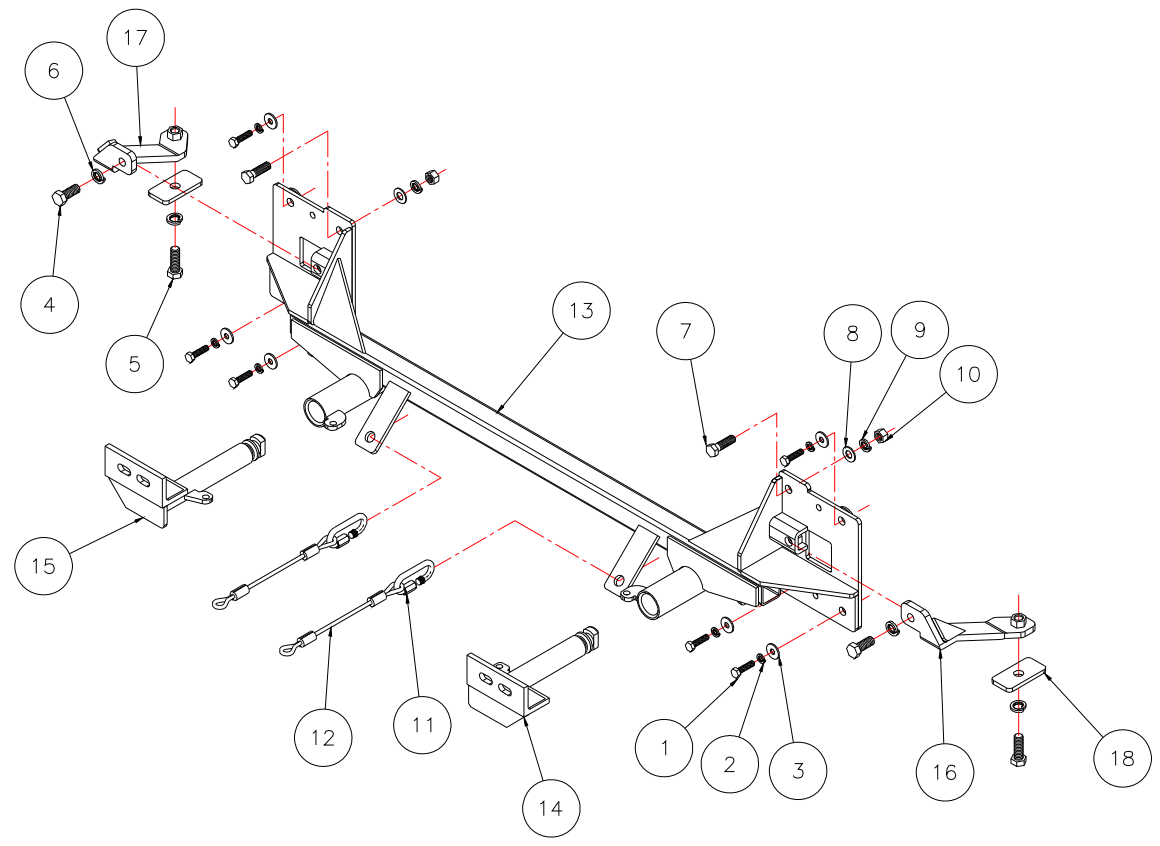


# BASEPLATE KIT INSTALLATION INSTRUCTIONS

**KIT# 521622-1A**

04/22/10  
KS

ROADMASTER, Inc. 6110 NE 127th Ave. Vancouver, WA 98682 1-800-669-9690 fax 360-735-9300 www.roadmasterinc.com



Item	Qty.	Length	Width	Description	Part#
1	6	30mm	8mm	8mm x 1.25 x 30 BOLT	356001-00
2	6		8mm	LOCK WASHER	355705-00
3	6		8mm	FENDER WASHER	355702-00
4	2	1 1/4"	1/2"	BOLT	350094-10
5	2	1 1/2"	1/2"	BOLT	350095-00
6	4		1/2"	LOCK WASHER	350309-00
7	2	1 1/2"	7/16"	BOLT	350074-00
8	2		7/16"	FLAT WASHER	350345-00
9	2		7/16"	LOCK WASHER	350307-00
10	2		7/16"	NUT	350256-00
11	2			CABLE CONNECTOR	200008-00
12	2	8"		SAFETY CABLE	500646-08
13	1			MAIN RECEIVER BRACE WELDMENT	C-001389
14	1			DRIVER SIDE ARM WELDMENT	C-001390
15	1			PASSENGER SIDE ARM WELDMENT	C-001391
16	1			DRIVER SIDE REAR WELDMENT	C-001392
17	1			PASSENGER SIDE REAR WELDMENT	C-001393
18	2			1/4" x 1 1/2" x 3" BACKING PLATE	A-000185



# BASEPLATE KIT INSTALLATION INSTRUCTIONS

**KIT# 521622-1A**

04/22/10  
KS

ROADMASTER, Inc. 6110 NE 127th Ave. Vancouver, WA 98682 1-800-669-9690 fax 360-735-9300 www.roadmasterinc.com

This is one of our EZ series brackets, which allows the visible front portion of the bracket to be easily removed from the front of the vehicle (Fig.A and Fig.B). The bracket kit consists of a main receiver brace, two rear braces, two removable front braces and a hardware pack. The main receiver brace mounts to the frame rails. The rear braces mount to the main receiver brace and the frame rails. The removable front braces install in the main receiver brace. Before starting the installation, lay out the kit components in order, as they will be used. This will give you a visual idea of how the components work, and will also confirm that everything is present and accounted for.



**IMPORTANT:** All baseplates **must** be assembled with all the bolts left loose for final adjustment and positioning (before tightening) unless otherwise instructed. All bolts **must** be torqued for proper strength. If more than one bolt is used per fastening point, the diagram may only show one. Use flat washers over all slotted holes and lock washers on all fasteners.

## WARNING

Failure to heed these warnings or follow the installation instructions may result in a voided warranty, loss of towed vehicle, personal injury or death.

- Do not weld or modify this baseplate or its components. Welding or modification will void the warranty.
- Do not use this document as a basis to design/fabricate a baseplate, as it may not show all parts or structural components.
- We strongly recommend professional installation.
- If the towed vehicle has been in an accident, it must be properly repaired before attaching the baseplate. Do not install the baseplate if any structural frame damage is found.
- The installer must use all bolts and parts supplied. If running changes were made by the vehicle manufacturer after this kit was designed, some bolts or other fasteners may no longer be the correct size. It is the installer's responsibility to verify this kit is securely fastened to the vehicle.
- Use Loctite® Red on all bolts used to secure this baseplate. Torque all bolts to the specifications found at the end of these instructions. Do not over-torque the bolts or failure may occur.
- The installer must inspect the baseplate to ensure adequate clearance, particularly around hoses, air conditioner lines, radiators, etc. or non-warranty failure may result.
- Roadmaster manufactures many styles of baseplates. If your baseplate has removable arms, they must be removed before driving the vehicle, unless the arms can be pinned or padlocked in place. If not secured, the arms could vibrate out.
- Some motorhome chassis have such a tight turning radius that you can damage your motorhome, towed vehicle, tow bar or baseplate while turning sharply. Before getting on the road, test your turning radius in an empty parking lot. Turning too sharply could result in non-warranty damage to your towing system, motorhome and/or towed vehicle.
- Do not back up with the towed vehicle attached or non-warranty damage will occur to your towing system or vehicles.
- The safety cables must connect the towing vehicle to the towed vehicle frame to frame, with the cables crossed, with enough slack for sharp turns. See cable instructions for proper routing. Failure to do so will result in non-warranty damage and/or the loss of the towed vehicle.
- This kit is designed for use with ROADMASTER tow bars and ROADMASTER adapters only. Using this kit with other brands, without an approved ROADMASTER adapter, may result in non-warranty damage or injury.
- Receiver extensions and out-of-level towing situations of 3 inches or more. This can cause the system to swing much higher and lower, causing excessive strain on the tow bar, baseplate and frame. That can cause the towing system to fail, causing property damage, personal injury or even death. If you must use a receiver extension or drop hitch to tow, it will reduce your receiver's weight capacity by 1/3 to avoid damaging your system. Never use more than one extension and/or drop hitch, as this will void your warranty.
- Every 3,000 miles, the owner must inspect all mounting points for cracks or fatigue, and check the fasteners for proper torque, according to the bolt torque requirements chart on the last page of these instructions.
- The owner must follow the vehicle manufacturer's instructions to prepare the vehicle for towing. Failure to do so may cause severe damage to the vehicle.
- This baseplate is only warranted for the original installation. Installing a used baseplate on another vehicle is not recommended and will void the warranty.

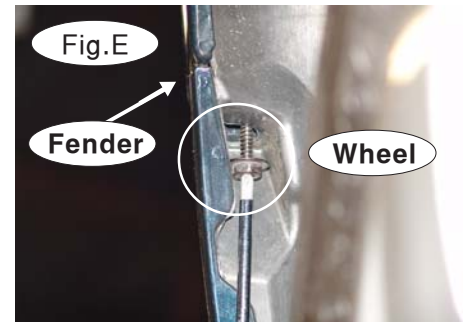


# BASEPLATE KIT INSTALLATION INSTRUCTIONS

**KIT# 521622-1A**

04/22/10  
KS

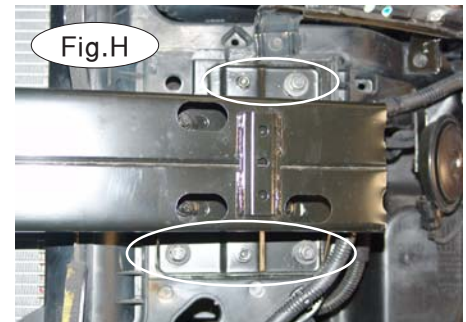
ROADMASTER, Inc. 6110 NE 127th Ave. Vancouver, WA 98682 1-800-669-9690 fax 360-735-9300 www.roadmasterinc.com



1. **Important:** please use all supplied bolts and parts and read all instructions carefully before beginning this installation. The majority of questions you may have can be answered within the text, and proper installation will ensure safe and secure travel. Now, begin the installation by removing seven Phillips screws from the top of the fascia (Fig.C).

2. Now, remove one 10mm (head) bolt located between the headlight and the grille (Fig.D). Repeat for the other side.

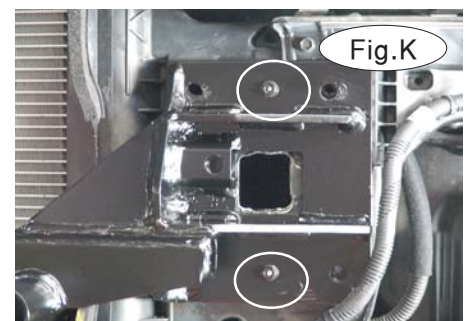
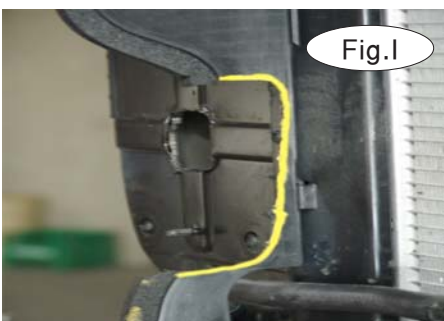
3. Remove one Phillips (head) screw attaching the fascia to the corner and the fender (Fig.E). Repeat for the other side.



4. On both sides, remove two plastic fastener holding the splash panel to the corner of the fascia (Fig.F).

5. Unplug the fog lights (if the vehicle is so equipped).

6. Now, remove the fascia by pulling out and forward (Fig.G).



7. Remove the bumper core by removing three 12mm (head) bolts and two 10mm (head) nuts per side (Fig.H). The bumper core will not be reinstalled.

8. The air deflectors on both sides will need to be trimmed before the main receiver brace can be installed. Refer to the yellow marker line in Figure I for correct trimming. **For 2009 to 2010 Hyundai Sonata models:** refer to the yellow marker line in Figure J for correct trimming.

9. Next, place the main receiver brace over the existing bumper core mounting studs. Replace the two 10mm (head) nuts you removed in step 7 (Fig.K).

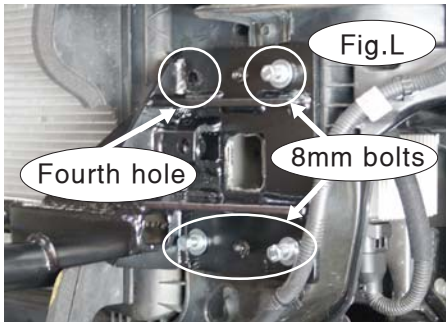


# BASEPLATE KIT INSTALLATION INSTRUCTIONS

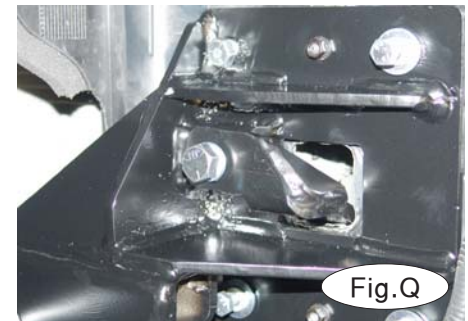
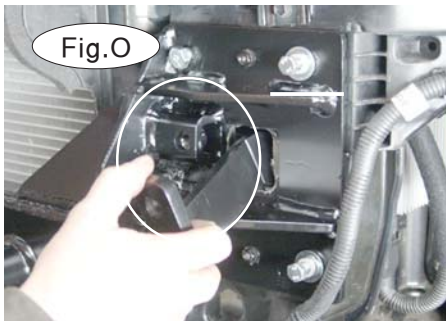
**KIT# 521622-1A**

04/22/10  
KS

ROADMASTER, Inc. 6110 NE 127th Ave. Vancouver, WA 98682 1-800-669-9690 fax 360-735-9300 www.roadmasterinc.com



10. Using the supplied 8mm x 1.25 x 30mm bolts, lock washers and fender washers (three of each per side), bolt the main receiver brace to the ends of both frame rails (Fig.L).
11. Using a 7/16" x 1½" bolt, flat washer, lock washer and nut, bolt through the fourth remaining hole in the main receiver brace (Fig.L). *Note:* place the flat washer on the back side of the frame. Also, the hole for the 7/16" bolt may need to be enlarged. Repeat for the other side.
12. Next, remove the rubber plugs from the bottom of each of the frame rails (Fig.M).
13. Using a die grinder, enlarge the existing holes in the ends of the frame rails (Fig.N).



14. Starting with the driver's side, insert the rear brace through the enlarged hole in the end of the frame rail (Fig.O).
15. Using the supplied ½" x 1½" bolt, lock washer and ¼" x 1½" x 3" backing plate (with a 9/16" hole), bolt through the bottom of the frame rail and into the rear brace (Fig.P).
16. Using the supplied ½" x 1¼" bolt and lock washer, bolt the rear brace to the main receiver brace (Fig.Q). *Note:* Figure N also shows the mounting point for the rear brace to the main receiver brace.
17. Repeat steps 14 and 16 for the passenger's side.
18. Now, tighten all the remaining bolts to the torque specifications listed at the end of these instructions. Start with all the bolts on the front of the main receiver brace, and end with the bolts on the bottom of the frame rails.



# BASEPLATE KIT INSTALLATION INSTRUCTIONS

**KIT# 521622-1A**

04/22/10  
KS

ROADMASTER, Inc. 6110 NE 127th Ave. Vancouver, WA 98682 1-800-669-9690 fax 360-735-9300 www.roadmasterinc.com

19. For 2009 to 2010 Hyundai Sonata models: the center grille from the fascia will need to be trimmed to accommodate the main receiver brace. There are four screws and 16 plastic clips that must be removed to accomplish this. Then, trim out the upright on each side, and then trim across the top. Refer to the yellow marker lines in Figure R as a guide for correct trimming.

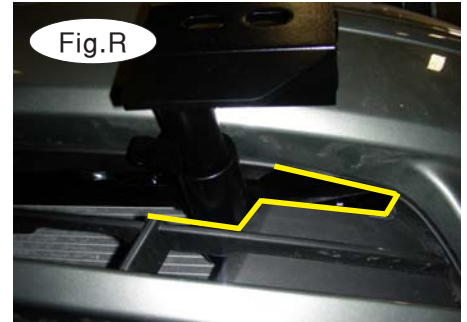
20. Reassemble the fascia by reversing steps 1 through 5.

21. Insert the front braces in the receiver braces and turn 90 degrees to lock.

22. Install the safety cables and connectors.

23. Attach the ends of the 8" safety cables to front holes in the cable mounting tabs located on the inside of the receiver braces with the included cable connectors (Q-Links - Fig.S). Connect the other end to the tow vehicle's safety cables and tow bar.

24. Install the tow bar according to the manufacturer's instructions.



## BOLT TORQUE REQUIREMENTS

Note: The torque values represented below are intended as general guidelines. Torque requirements for specific applications may vary. Roadmaster does not warrant this information to be accurate for all applications and disclaims all liability for any claims or damages which may result from its use.

### STANDARD BOLTS

Thread Size	Grade	Torque
5/16	5	13 ft./lb.
3/8	5	23 ft./lb.
7/16	5	37 ft./lb.
1/2	5	56 ft./lb.
5/8	5	150 ft./lb.

### METRIC BOLTS

Thread Size	Grade	Plated / Unplated
8mm-1.0	8.8	20 ft./lb. 18 ft./lb.
8mm-1.25	8.8	19 ft./lb. 18 ft./lb.
10mm-1.25	8.8	38 ft./lb. 36 ft./lb.
10mm-1.5	8.8	37 ft./lb. 35 ft./lb.

### METRIC BOLTS

Thread Size	Grade	Plated / Unplated
12mm-1.25	8.8	70 ft./lb. 65 ft./lb.
12mm-1.5	8.8	66 ft./lb. 61 ft./lb.
12mm-1.75	8.8	65 ft./lb. 60 ft./lb.
14mm-2.0	8.8	104 ft./lb. 97 ft./lb.

All illustrations and specifications contained herein are based on the latest information available at the time of publication approval. ROADMASTER, INC. reserves the right to make changes at any time without notice in material, specification and models or to discontinue models.