



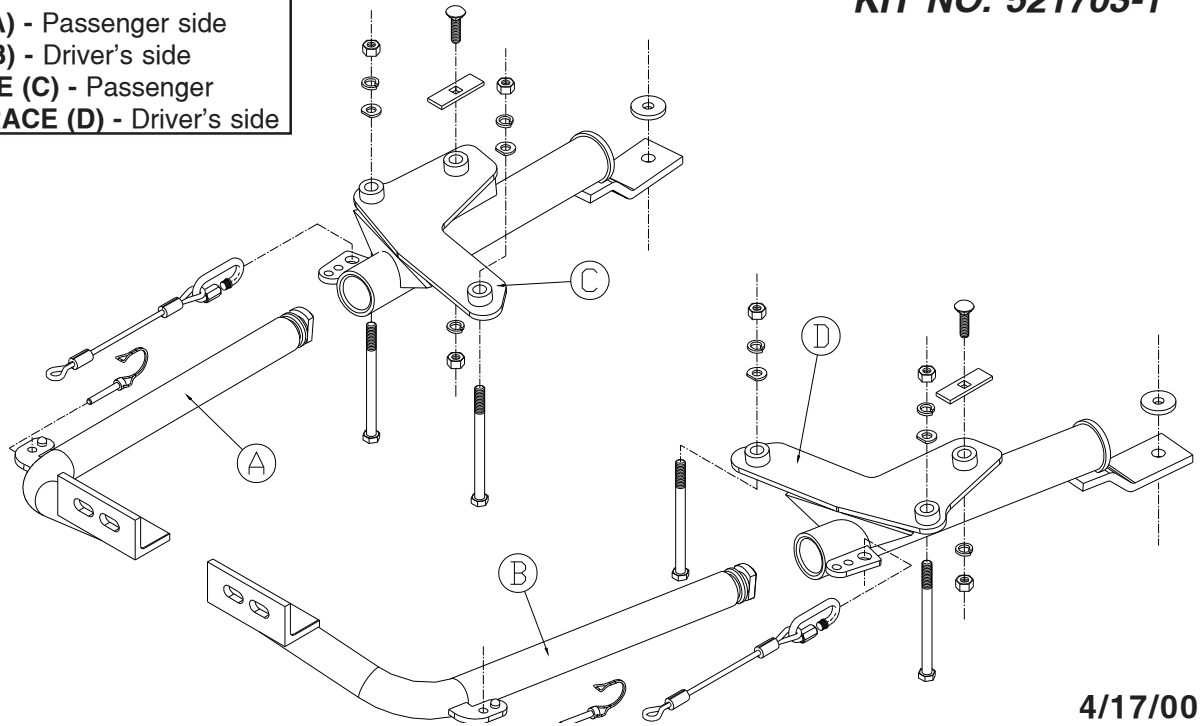
BASEPLATE KIT INSTALLATION INSTRUCTIONS

ROADMASTER, Inc. 6110 NE 127th Ave. Vancouver, WA 98682 1-800-669-9690 fax 360-735-9300 www.roadmasterinc.com

PARTS LIST:

- 1- FRONT BRACE (A) - Passenger side
- 1- FRONT BRACE (B) - Driver's side
- 1- RECEIVER BRACE (C) - Passenger
- BASEPLATE KIT BRACE (D) - Driver's side

KIT NO. 521703-1



4/17/00

IMPORTANT: All brackets **must** be assembled with all the bolts left loose for final adjustment and positioning (before tightening) unless otherwise instructed. All bolts **must** be torqued for proper strength. If more than one bolt is used per fastening point, the diagram may only show one.

- Use flat washers over all slotted holes
- Use lock washers on all fasteners

WARNING

Failure to follow these instructions can result in property damage, personal injury or even death.

- Installation of most mounting brackets requires moderate mechanical aptitude and skills. We strongly recommend professional installation by an experienced installer.
- The installer must read the instructions and use all bolts and parts supplied. Failure to do so could result in loss of the towed vehicle.
- Use Loctite® Red on all bolts used for mounting this bracket.
- Do not use this document for custom fabrication, as it may not show all parts or structural components. Custom fabrication or an attempt to copy this bracket design could result in loss of the towed vehicle.
- Every 3,000 miles, the owner must inspect the fasteners for proper torque, according to the bolt torque requirements chart on the last page of these instructions. The owner must also inspect all mounts and brackets for cracks or other signs of fatigue every 3,000 miles. Failure to do so could result in loss of the towed vehicle.
- The owner must check the vehicle manufacturer's instructions for the proper procedure(s) to prepare the vehicle for towing. Some vehicles must be equipped with a transmission lube pump, an axle disconnect, driveline disconnect or free-wheeling hubs before they can be towed. Failure to properly equip the vehicle will cause severe damage to the transmission.
- If running changes were made by the vehicle manufacturer after this bracket was designed, some bolts or other fasteners in the hardware pack may no longer be the correct size. It is the installer's responsibility to verify that the bracket is securely fastened to the vehicle and fitted with the correct hardware to account for these changes. Failure to securely

fasten the bracket could result in loss of the towed vehicle.

- If the towed vehicle has been in an accident, it must be properly repaired before attaching the bracket. Do not install the bracket if any structural frame damage is found. Failure to repair the damage could result in the loss of the towed vehicle.
- Some motorhome chassis have such a tight turning radius that you can damage your motorhome, towed vehicle, tow bar or bracket while turning sharply. Before getting on the road, test your turning radius in an empty parking lot. Turning too sharply could result in non-warranty damage to towing system, motorhome and/or towed vehicle.
- Do not back up with the towed vehicle attached or non-warranty damage will occur to your towing system, motorhome and/or towed vehicle.
- The safety cables must connect the towing vehicle to the towed vehicle frame to frame, with the cables crossed, with enough slack for sharp turns. Refer to the cable instructions for proper routing. Failure to leave enough slack in the safety cables, or failure to connect the safety cables frame to frame, will result in the loss of the towed vehicle.
- This bracket is designed for use with ROADMASTER tow bars and ROADMASTER adaptors only. Using this bracket with other brands, without an approved ROADMASTER adaptor, may result in non-warranty damage or injury.
- Upon final installation, the installer must inspect the bracket to ensure adequate clearance, particularly around hoses, air conditioner lines, radiators, etc., or non-warranty damage to the towed vehicle will result.
- This bracket is only warranted for the original installation. Installing a used bracket on another vehicle is not recommended and will void the warranty.

warranty.

BASEPLATE KIT INSTALLATION INSTRUCTIONS

ROADMASTER, Inc. 6110 NE 127th Ave. Vancouver, WA 98682 1-800-669-9690 fax 360-735-9300 www.roadmasterinc.com

KIT NO. 521703-1

1. **Important:** please use all supplied bolts and parts and read all instructions carefully before beginning this installation. The majority of questions you may have can be answered within the text, and proper installation will ensure safe and secure travel. Now, begin the installation. This is one of our EZ lock bracket series that allows the visible front portion of the brackets to be easily removed from the front of the car by rotating the front braces. The bracket kit consists of two main receiver braces, two tubular front braces and a hardware pack. The rear receiver braces mount to the bottom of the frame and protrude through the lower fascia opening on each side below the headlights and the bumper. The front tubular braces are inserted into the rear braces and rotated 90 degrees to lock in place. The lower grilles can be left off or trimmed to fit around the tubular portion of the main braces. The large lower splash shield will have to be removed then trimmed to fit around the rear of the receiver braces when reinstalled. Before starting the installation, lay out the kit components as it is illustrated. This will give you a visual idea of how the components work and also confirm that everything is present and accounted for. Begin by removing the lower grilles on each side. Pull forward to unsnap.
2. Remove two 10mm bolts holding the center splash guard, then pull the splash guard back and down to remove. Set aside for now.
3. Locate a T-25 torx screw in the upper middle of each lower grille opening and remove. Now cut and remove these fascia tabs. This is where you will drill through the bumper core in step 11.
4. Block or support the frontsub frame of the vehicle so that it will not move if the front subframe bolts are removed. *Note:* this is important: the subframe can drop if you do not do this.
5. Working on one side at a time, find the large rubber isolation bushing located near the front of the subframe and remove the large existing bolt in the middle.
6. Hold a rear receiver in position and bolt through the rear-mounting hole with the bolt removed in step 4 , be sure use a special 1/4" x 1 3/4" dia. spacer-washer over the bolt and rear brace as illustrated. Line the receiver brace up and torque this bolt to the specifications below.
7. Fish wire a 1/2" x 1 3/4" carriage bolt and 1/4" x 1" x 3" backing plate through a side hole into the existing frame hole which lines up with the middle mounting hole. Finish with a 1/2" nut and lock washer.
8. Repeat steps 5 through 7 for the remaining side.
9. Remove three 10mm mounting bolts in each front headlight, then pull the headlights forward and out. Detach from the wiring harness and set aside.
10. Detach the bumper fascia from the black mounting plastic on top the bumper core in front of the headlight openings. This will give you access to the top of the bumper core.
11. Using the lower receiver braces mounting holes as templates, drill two holes per side through the bumper core with a long 17/32" drill bit. *Note:* take some time and drill these holes as straight as possible. The space is limited, so use a piece of steel or other suitable material as a backup for your drill bit.
12. Bolt through the drilled mounting holes and the lower braces with 1/2" x 7 1/2" bolts, clipped flat washers, lock washers and nuts.

BOLT TORQUE REQUIREMENTS

Note: The torque values represented below are intended as general guidelines. Torque requirements for specific applications may vary. Roadmaster does not warrant this information to be accurate for all applications and disclaims all liability for any claims or damages which may result from its use.

STANDARD BOLTS			METRIC BOLTS			METRIC BOLTS		
Thread Size	Grade	Torque	Thread Size	Grade	Plated/Unplated	Thread Size	Grade	Plated/Unplated
5/16	5	13 ft./lb.	8mm-1.0	8.8	20 ft./lb. 18 ft./lb.	12mm-1.25	8.8	70 ft./lb. 65 ft./lb.
3/8	5	23 ft./lb.	8mm-1.25	8.8	19 ft./lb. 18 ft./lb.	12mm-1.5	8.8	66 ft./lb. 61 ft./lb.
7/16	5	37 ft./lb.	10mm-1.25	8.8	38 ft./lb. 36 ft./lb.	12mm-1.75	8.8	65 ft./lb. 60 ft./lb.
1/2	5	56 ft./lb.	10mm-1.5	8.8	37 ft./lb. 35 ft./lb.	14mm-2.0	8.8	104 ft./lb. 97 ft./lb.
5/8	5	150 ft./lb.						



BASEPLATE KIT INSTALLATION INSTRUCTIONS

KIT NO. 521703-1

13. Torque all mounting bolts to specifications below.
14. Reattach the top of the fascia to the black plastic and reinstall the headlights.
15. Trim rear of splash panel to clear rear receiver mounting and reinstall.
16. Insert front braces in the receivers and twist 90 degrees to lock. Install safety pins.
17. Mount the tow bar according to the tow bar manufacturer's instructions. Install the 10" safety cables to the side of the main receiver portion of the bracket with the quick links provided. Attach the other end to the tow vehicle's safety cables and the tow bar.

HARDWARE LIST

- 4-1/2" x 7 1/2" bolts
- 2- 1/2" X 1 3/4" carriage bolts
- 4-1/2" clipped flat washers
- 6- 1/2" lock washers
- 6-1/2" nuts
- 2- 1/4" spacer washers
- 2- safety clips
- 2- 1/2" plate washers
- 2-10" safety cables
- 2-quick links

4/17/00

BOLT TORQUE REQUIREMENTS

Note: The torque values represented below are intended as general guidelines. Torque requirements for specific applications may vary. Roadmaster does not warrant this information to be accurate for all applications and disclaims all liability for any claims or damages which may result from its use.

STANDARD BOLTS

Thread Size	Grade	Torque
5/16	5	13 ft./lb.
3/8	5	23 ft./lb.
7/16	5	37 ft./lb.
1/2	5	56 ft./lb.
5/8	5	150 ft./lb.

METRIC BOLTS

Thread Size	Grade	Plated/Unplated
8mm-1.0	8.8	20 ft./lb. 18 ft./lb.
8mm-1.25	8.8	19 ft./lb. 18 ft./lb.
10mm-1.25	8.8	38 ft./lb. 36 ft./lb.
10mm-1.5	8.8	37 ft./lb. 35 ft./lb.

METRIC BOLTS

Thread Size	Grade	Plated/Unplated
12mm-1.25	8.8	70 ft./lb. 65 ft./lb.
12mm-1.5	8.8	66 ft./lb. 61 ft./lb.
12mm-1.75	8.8	65 ft./lb. 60 ft./lb.
14mm-2.0	8.8	104 ft./lb. 97 ft./lb.