

BASEPLATE KIT INSTALLATION INSTRUCTIONS

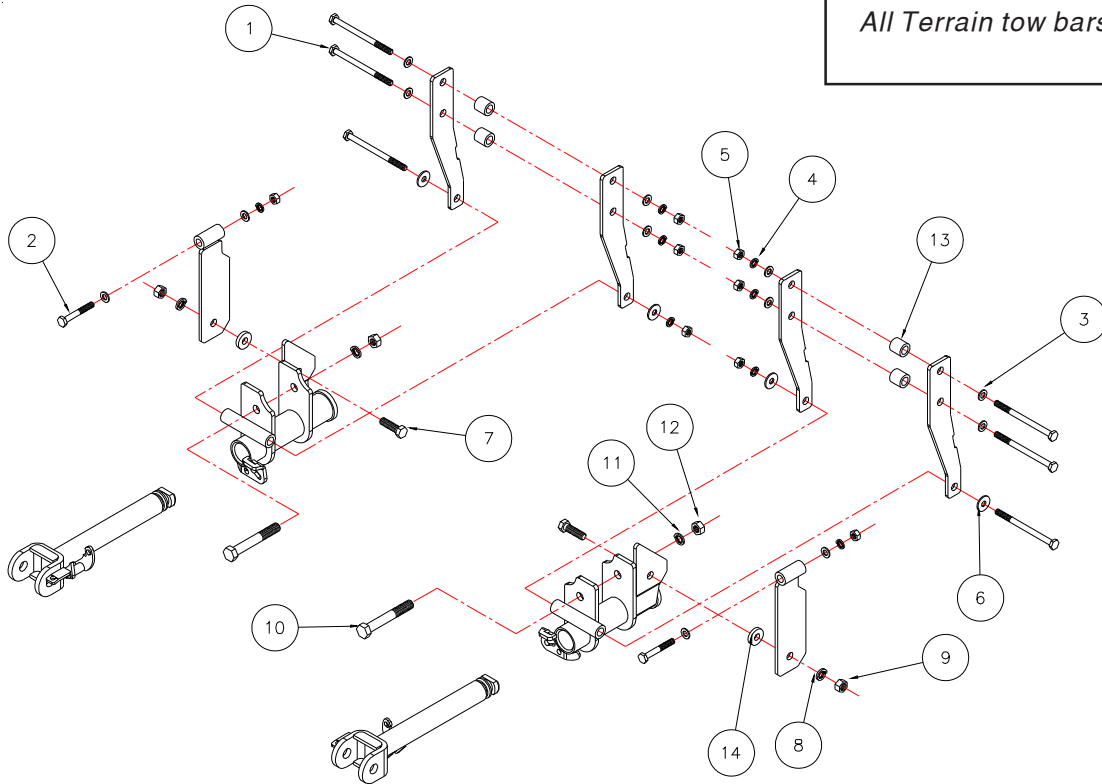
KIT# 521911-1

10/29/03



ROADMASTER, Inc. 6110 NE 127th Ave. Vancouver, WA 98682 1-800-669-9690 fax 360-735-9300 www.roadmasterinc.com

Important
Note: this bracket will not accommodate the Guardian rock shield, Stowaway or the StowMaster and StowMaster All Terrain tow bars.



Item	Qty	Length	Width	Name	Part No.
1	6	140mm	.10mm	10mm x 1.5 x 140mm	356124-00
2	2	65mm	...10mm	10mm x 1.5 x 65mm	
3	12		10mm	10mm FLAT WASHER	355710-00
4	8		10mm	10mm LOCK WASHER	355715-00
5	8		10mm	10mm x 1.5 NUT	356230-00
6	4		10mm	10mm FENDER WASHER	355716-00
7	2	1 3/4"	...1/2"	1/2" x 1 3/4" BOLT	350096-00
8	2		1/2"	1/2" LOCK WASHER	350309-00
9	2		1/2"	1/2" NUT	350258-00
10	2	5 1/2"	...5/8"	5/8" x 5 1/2" BOLT	350161-00
11	2		5/8"	5/8" LOCK WASHER	350313-00
12	2		5/8"	5/8" NUT	350262-00
13	4	1"1" O.D.	1" x .188" WALL ROUND TUBE	150075-00
14	2	1/4"1 1/4"ROUND TUBE	150096-30

ROADMASTER, INC.

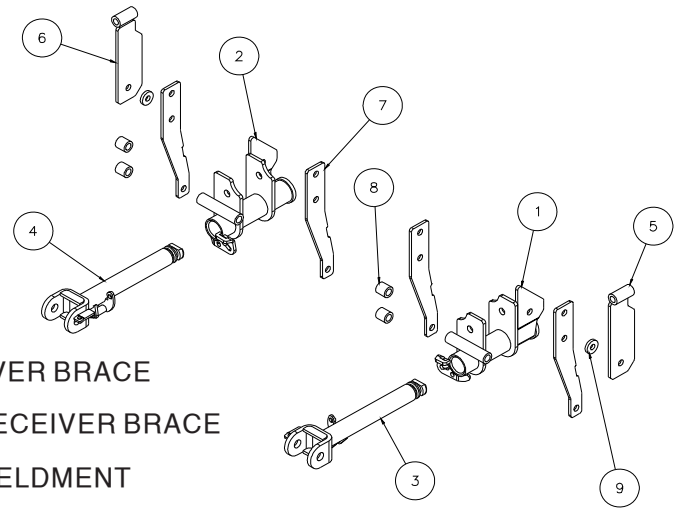


BASEPLATE KIT INSTALLATION INSTRUCTIONS

KIT# 521911-1

10/29/03

ROADMASTER, Inc. 6110 NE 127th Ave. Vancouver, WA 98682 1-800-669-9690 fax 360-735-9300 www.roadmasterinc.com



Item	Qty	Part No.	Parts
1	1	C-000533	DRIVER SIDE RECEIVER BRACE
2	1	C-000534	PASSENGER SIDE RECEIVER BRACE
3	1	C-000535	DRIVER SIDE ARM WELDMENT
4	1	C-000536	PASSENGER SIDE ARM WELDMENT
5	1	C-000537	DRIVER SIDE REAR BRACE
6	1	C-000538	PASSENGER SIDE REAR BRACE
7	4	A-000938	BRACE PLATE
8	4	A-000028	1" PIPE SPACER
9	2	A-000889	1 1/4" x 1/4" SPACER

IMPORTANT: All baseplates *must* be assembled with all the bolts left loose for final adjustment and positioning (before tightening) unless otherwise instructed. All bolts *must* be torqued for proper strength. If more than one bolt is used per fastening point, the diagram may only show one.

- Use flat washers over all slotted holes
- Use lock washers on all fasteners

WARNING

Failure to follow the below warnings and the installation instructions may result in voiding your warranty, property damage, the loss of your towed vehicle, personal injury or even death.

- We strongly recommend professional installation.
- The installer must read the instructions and use all bolts and parts supplied.
- Use **Loctite® Red** on all bolts used to secure this baseplate. Torque all bolts to the specifications found at the end of these instructions. Do not over-torque the bolts or failure may occur.
- Every 3,000 miles, the owner must inspect the fasteners for proper torque, according to the bolt torque requirements chart on the last page of these instructions. The owner must also inspect all mounting points for cracks or other signs of fatigue every 3,000 miles.
- The owner must check the vehicle manufacturer's instructions for the proper procedure(s) to prepare the vehicle for towing. Some vehicles must be equipped with a transmission lube pump, an axle disconnect, driveline disconnect or free-wheeling hubs before they can be towed. Failure to properly equip the vehicle will cause severe damage to the transmission.
- Do not weld. This baseplate is designed to be bolted to the vehicle. Welding will void the warranty.
- Do not use this document for custom fabrication, as it may not show all parts or structural components could result in loss of the towed vehicle.
- If the towed vehicle has been in an accident, it must be properly repaired before attaching the baseplate. Do not install the baseplate if any structural frame damage is found.
- If running changes were made by the vehicle manufacturer after this kit was designed, some bolts or other fasteners in the hardware pack may no longer be the correct size. It is the installer's responsibility to verify this kit is securely fastened to the vehicle and fitted with the correct hardware to account for these changes.
- Roadmaster manufactures many styles of baseplates. If your baseplate has removable arms, they must be removed before driving the vehicle, unless the arms can be pinned or padlocked in place. If not secured, the arms could vibrate out.
- Some motorhome chassis have such a tight turning radius that you can damage your motorhome, towed vehicle, tow bar or baseplate while turning sharply. Before getting on the road, test your turning radius in an empty parking lot. Turning too sharply could result in non-warranty damage to towing system, motorhome and/or towed vehicle.
- Do not back up with the towed vehicle attached or non-warranty damage will occur to your towing system, motorhome and/or towed vehicle.
- The safety cables must connect the towing vehicle to the towed vehicle frame to frame, with the cables crossed, with enough slack for sharp turns. Refer to the cable instructions for proper routing. Failure to leave enough slack in the safety cables, or failure to connect the safety cables frame to frame, will result in the loss of the towed vehicle.
- This kit is designed for use with ROADMASTER tow bars and ROADMASTER adapters only. Using this kit with other brands, without an approved ROADMASTER adapter, may result in non-warranty damage or injury.
- Upon final installation, the installer must inspect the baseplate to ensure adequate clearance, particularly around hoses, air conditioner lines, radiators, etc.
- This baseplate is only warranted for the original installation. Installing a used baseplate on another vehicle is not recommended and will void the warranty.

ROADMASTER, INC.



BASEPLATE KIT INSTALLATION INSTRUCTIONS

KIT# 521911-1

10/29/03

ROADMASTER, Inc. 6110 NE 127th Ave. Vancouver, WA 98682 1-800-669-9690 fax 360-735-9300 www.roadmasterinc.com

R O A D M A S T E R , I N C .

1. This is one of our EZ lock bracket series that allows the visible front portion of the brackets to be easily removed from the front of the car by rotating the front braces. **Important:** please use all supplied bolts and parts and read all instructions carefully before beginning this installation. The majority of questions you may have can be answered within the text, and proper installation will ensure safe and secure travel. Now, begin the installation by laying out the kit components as it is illustrated. This will give you a visual idea of how the components work and also confirm that everything is present and accounted for (Fig.A).



2. Start removing the front bumper and brush guard by accessing the sides of the bumper under the fender liner. Find a small wire retainer and flip up on both sides (Fig. B,C,D).
3. Disconnect the vacuum tubes and wiring harness from both the fog or driving lights (Fig.E).



BASEPLATE KIT INSTALLATION INSTRUCTIONS

KIT# 521911-1

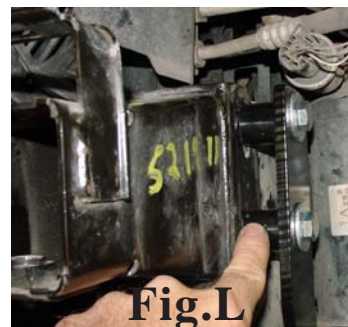
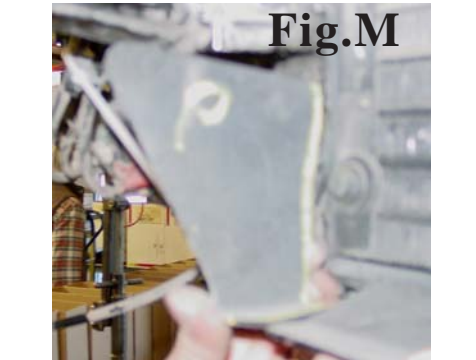
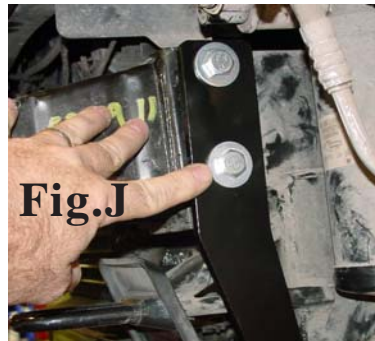
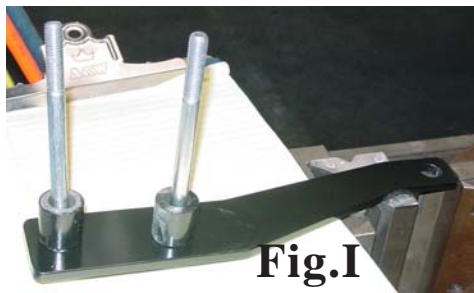
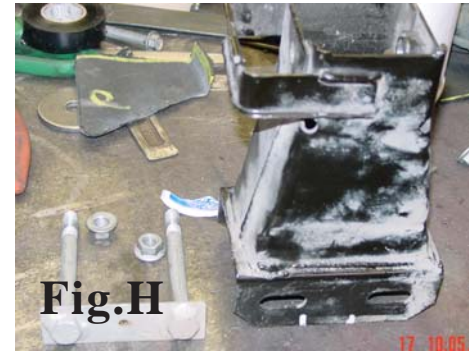
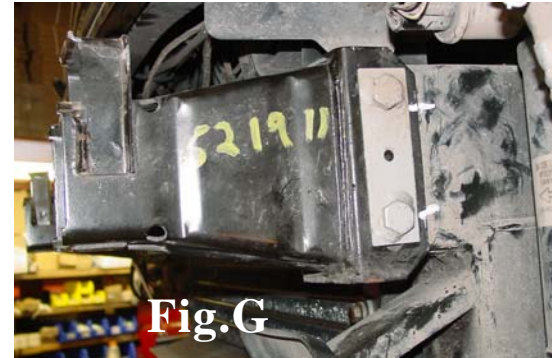
10/29/03



ROADMASTER, Inc. 6110 NE 127th Ave. Vancouver, WA 98682 1-800-669-5

R O A D M A S T E R, I N C.

4. Locate two bolts under the bumper on each side and remove. Now pull the bumper and brush guard off and set aside, caution, this bumper is heavy help would be advised (Fig.F).
5. Mark the bumper mounting towers on each side to facilitate realignment then remove bolt bracket holding each one (Fig.G,H).
6. Reinstall the towers using inside and outside front braces and spacers with 10mm x 1.5 x 140mm bolts, spacers, fender washers, lock washers, and nuts. Do this for both sides lining the bumper towers with their original marks (Fig. I,J,K,L,). The passenger side will need flat washers over the adjustment slots (Fig. N) and the sides and bottom of the radiator air deflector will need to be trimmed for the inner side braces (Fig.M).



BASEPLATE KIT INSTALLATION INSTRUCTIONS

KIT# 521911-1

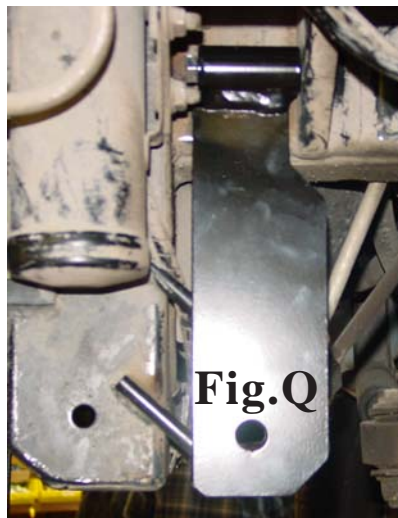
10/29/03



ROADMASTER, Inc. 6110 NE 127th Ave. Vancouver, WA 98682 1-800-669-9690 fax 360-735-9300 www.roadmasterinc.com

R O A D M A S T E R, I N C.

7. Mount the receiver braces under the frame on each side as shown, then bolt through the bottom of the side braces and the front of the receiver braces with 10mm x 1.5 x 140 bolts, spacers, fender washers, lock washers and nuts (Fig.O).
8. Install the rear side braces on the frame and receiver braces as shown with a 10mm x 1.5 x 65 bolt, fender washers, lock washers and nuts (Fig. P,Q,R). *Note:* the windshield washer bottle will have to be temporarily dismantled (3- 10mm head bolts) to access the frame area on the rear brace (Fig.S).



9. Bolt through the lower tie down loop on each side with a spacer and 1/2" x 1 3/4" bolt (Fig.T,U).
10. Align the receiver braces then tighten the side braces and rear brace to hold.



BASEPLATE KIT INSTALLATION INSTRUCTIONS

KIT# 521911-1

10/29/03



ROADMASTER, Inc. 6110 NE 127th Ave. Vancouver, WA 98682 1-800-669-9690 fax 360-735-9300 www.roadmasterinc.com

ROADMASTER, INC.

11. Using the receiver braces as drill templates, drill a 5/8" hole through the lower frame on each side (Fig.U).
12. Bolt through these holes with 5/8" x 5 1/2" bolts, lock washers and nuts (Fig.V).
13. Torque all bolts to the specifications below.
14. Trim the lower fascia to fit around the braces as illustrated. (Fig.W)
15. Reinstall the bumper fascia and brush guard reversing steps 2 through 4.
16. Install the front braces by inserting with front braces vertical to the ground, push in and twist down to lock in place. Once locked in and parallel to the ground. Install safety pins.
17. Mount the tow bar according to the tow bar manufacturers instructions. Attach the safety cables to the main receiver brace.



Fig.U

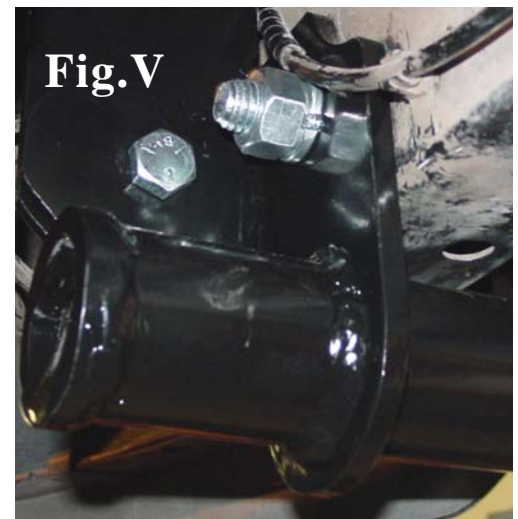


Fig.V



Fig.W

BOLT TORQUE REQUIREMENTS

Note: The torque values represented below are intended as general guidelines. Torque requirements for specific applications may vary. Roadmaster does not warrant this information to be accurate for all applications and disclaims all liability for any claims or damages which may result from its use.

STANDARD BOLTS			METRIC BOLTS			METRIC BOLTS		
Thread Size	Grade	Torque	Thread Size	Grade	Plated/Unplated	Thread Size	Grade	Plated/Unplated
5/16	5	13 ft./lb.	8mm-1.0	8.8	20 ft./lb. 18 ft./lb.	12mm-1.25	8.8	70 ft./lb. 65 ft./lb.
3/8	5	23 ft./lb.	8mm-1.25	8.8	19 ft./lb. 18 ft./lb.	12mm-1.5	8.8	66 ft./lb. 61 ft./lb.
7/16	5	37 ft./lb.	10mm-1.25	8.8	38 ft./lb. 36 ft./lb.	12mm-1.75	8.8	65 ft./lb. 60 ft./lb.
1/2	5	56 ft./lb.	10mm-1.5	8.8	37 ft./lb. 35 ft./lb.	14mm-2.0	8.8	104 ft./lb. 97 ft./lb.
5/8	5	150 ft./lb.						

All illustrations and specifications contained herein are based on the latest information available at the time of publication approval. ROADMASTER, INC. reserves the right to make changes at any time without notice in material, specification and models or to discontinue models.