

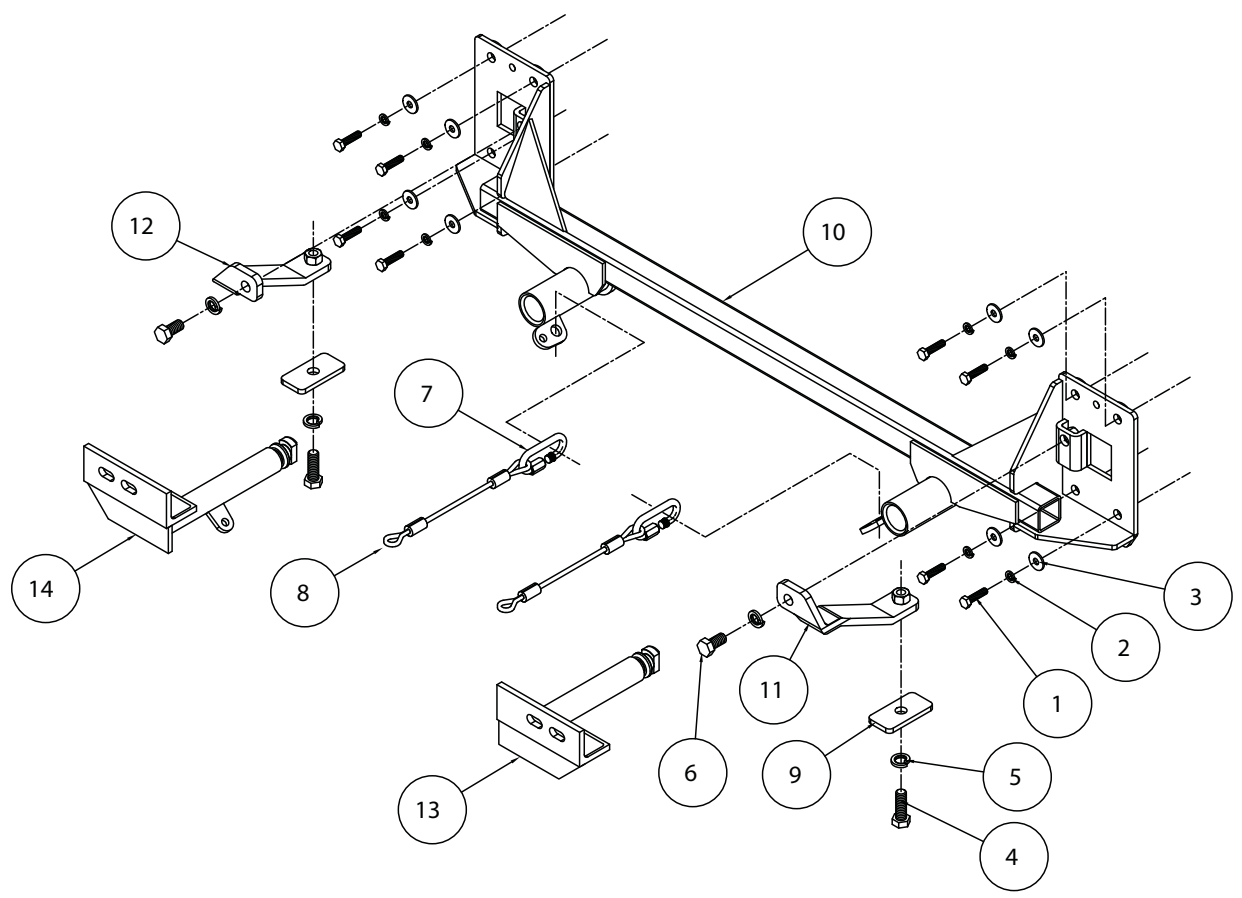


BASEPLATE KIT INSTALLATION INSTRUCTIONS

KIT# 522010-1

11/07/08
KS

ROADMASTER, Inc. 6110 NE 127th Ave. Vancouver, WA 98682 1-800-669-9690 fax 360-735-9300 www.roadmasterinc.com



ITEM	QTY	NAME	MATERIAL
1	8	8mm x 1.25 x 30 mm BOLT	356001-00
2	8	8mm LOCK WASHER	355705-00
3	8	8mm FENDER WASHER	355702-00
4	2	1/2" x 1 1/2" BOLT	350095-00
5	4	1/2" LOCK WASHER	350309-00
6	2	1/2" x 1" BOLT	350093-00
7	2	QUICK LINK	200008-00
8	2	SAFETY CABLE 8"	500646-08
9	2	1/4" x 1 1/2" x 3" BACKING PLATE W/ ROUND HOLE	A-000185
10	1	MAIN RECEIVER	C-001765
11	1	DRIVER SIDE BRACE	C-001766
12	1	PASSENGER SIDE BRACE	C-001767
13	1	DRIVER SIDE ARM	C-001768
14	1	PASSENGER SIDE ARM	C-001769



This is one of our EZ2 series brackets, which allows the visible front portion of the bracket to be easily removed from the front of the vehicle (Fig.A and Fig.B). The bracket consists of a main receiver brace, two removable front braces, two center braces and a hardware pack.

The main receiver brace mounts to the frame rails and the bumper core. The removable front braces install in the main receiver brace.

Before starting the installation, lay out the kit components in order, as they will be used. This will give you a visual idea of how the components work, and will also confirm that everything is present and accounted for.



Fig.A



Fig.B

INSTALLATION INSTRUCTIONS

IMPORTANT: All brackets **must** be assembled with all the bolts left loose for final adjustment and positioning (before tightening) unless otherwise instructed. All bolts **must** be torqued for proper strength. If more than one bolt is used per fastening point, the diagram may only show one.

- Use flat washers over all slotted holes
- Use lock washers on all fasteners

WARNING

Failure to follow these instructions can result in property damage, personal injury or even death.

- Installation of most mounting brackets requires moderate mechanical aptitude and skills. We strongly recommend professional installation by an experienced installer.
- The installer must read the instructions and use all bolts and parts supplied. Failure to do so could result in loss of the towed vehicle.
- Use Loctite® Red on all bolts used for mounting this bracket.
- Do not use this document for custom fabrication, as it may not show all parts or structural components. Custom fabrication or an attempt to copy this bracket design could result in loss of the towed vehicle.
- Every 3,000 miles, the owner must inspect the fasteners for proper torque, according to the bolt torque requirements chart on the last page of these instructions. The owner must also inspect all mounts and brackets for cracks or other signs of fatigue every 3,000 miles. Failure to do so could result in loss of the towed vehicle.
- The owner must check the vehicle manufacturer's instructions for the proper procedure(s) to prepare the vehicle for towing. Some vehicles must be equipped with a transmission lube pump, an axle disconnect, driveline disconnect or free-wheeling hubs before they can be towed. Failure to properly equip the vehicle will cause severe damage to the transmission.
- If running changes were made by the vehicle manufacturer after this bracket was designed, some bolts or other fasteners in the hardware pack may no longer be the correct size. It is the installer's responsibility to verify that the bracket is securely fastened to the vehicle and fitted with the correct hardware to account for these changes. Failure to securely fasten the bracket could result in loss of the towed vehicle.
- If the towed vehicle has been in an accident, it must be properly repaired before attaching the bracket. Do not install the bracket if any structural frame damage is found. Failure to repair the damage could result in the loss of the towed vehicle.
- Some motorhome chassis have such a tight turning radius that you can damage your motorhome, towed vehicle, tow bar or bracket while turning sharply. Before getting on the road, test your turning radius in an empty parking lot. Turning too sharply could result in non-warranty damage to towing system, motorhome and/or towed vehicle.
- Do not back up with the towed vehicle attached or non-warranty damage will occur to your towing system, motorhome and/or towed vehicle.
- The safety cables must connect the towing vehicle to the towed vehicle frame to frame, with the cables crossed, with enough slack for sharp turns. Refer to the cable instructions for proper routing. Failure to leave enough slack in the safety cables, or failure to connect the safety cables frame to frame, will result in the loss of the towed vehicle.
- This bracket is designed for use with ROADMASTER tow bars and ROADMASTER adaptors only. Using this bracket with other brands, without an approved ROADMASTER adaptor, may result in non-warranty damage or injury.
- Upon final installation, the installer must inspect the bracket to ensure adequate clearance, particularly around hoses, air conditioner lines, radiators, etc., or non-warranty damage to the towed vehicle will result.
- This bracket is only warranted for the original installation. Installing a used bracket on another vehicle is not recommended and will void the warranty.

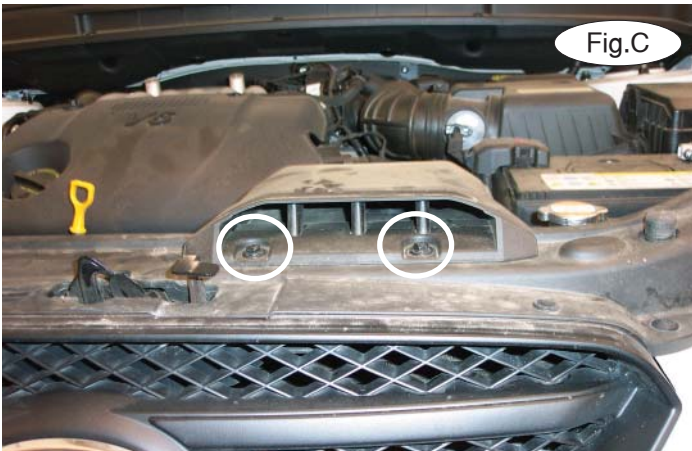


BASEPLATE KIT INSTALLATION INSTRUCTIONS

KIT# 522010-1

11/07/08
KS

ROADMASTER, Inc. 6110 NE 127th Ave. Vancouver, WA 98682 1-800-669-9690 fax 360-735-9300 www.roadmasterinc.com



1. **Important:** please use all supplied bolts and parts and read all instructions carefully before beginning this installation. The majority of questions you may have can be answered within the text, and proper installation will ensure safe and secure travel. Now, begin the installation by removing two 10mm (head) bolts attaching the air intake to the core support (Fig.C).

2. Remove nine plastic fasteners attaching the radiator cover to the core support (Fig.D).



3. Remove four 10mm (head) bolts and two Phillips screws attaching the top of the fascia to the core support (Fig.E).

4. Remove eight plastic fasteners attaching the lower splash shield to the fascia (Fig.F – driver's side) and four 10mm (head) bolts attaching the center splash shield to the radiator support. *Note:* only four of the fasteners and one of the bolts are pictured.

5. On each side, remove one Phillips screw attaching the corner of the fascia to the fender (Fig.G – driver's side).



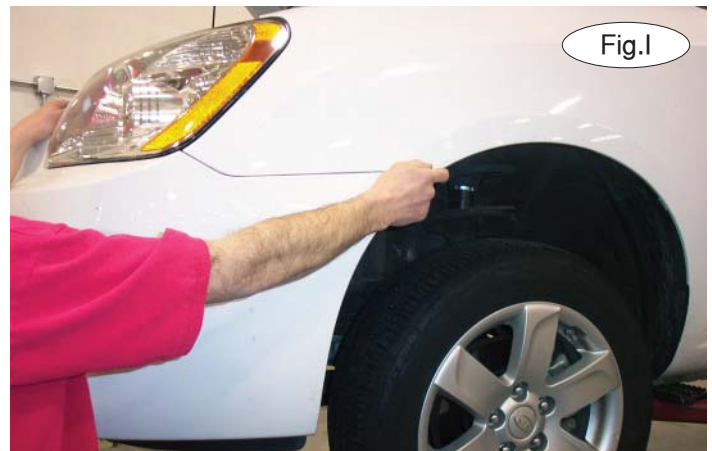


BASEPLATE KIT INSTALLATION INSTRUCTIONS

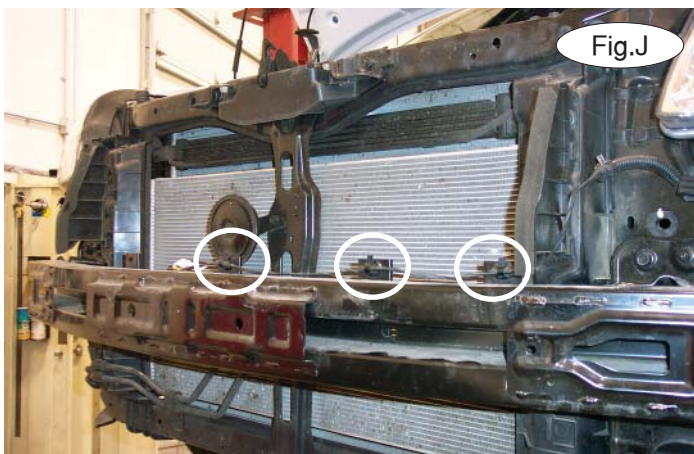
KIT# 522010-1

11/07/08
KS

ROADMASTER, Inc. 6110 NE 127th Ave. Vancouver, WA 98682 1-800-669-9690 fax 360-735-9300 www.roadmasterinc.com



6. Remove three 10mm (head) bolts attaching the bottom of the radiator support to the fascia (Fig.H).
7. Disconnect the fog lights, if the vehicle is so equipped, and pull on the corners of the fascia to remove it (Fig.I).



8. Remove three plastic fasteners attaching the wiring harness to the bumper core (Fig.J).
9. On each side, remove two 10mm nuts and four 10mm (head) bolts attaching the bumper core to the frame rail (Fig.K). Pull out to remove the bumper core. It will not be replaced. *Note:* retain the bumper core and attachment hardware so that it can be replaced if the bracket is ever removed.
10. Place the main receiver brace over the ends of the frame rail. On each side, bolt through the pre-existing holes in the frame rail using the four supplied 8mm x 1.25 x 30mm bolts, lock washers and fender washers. Tighten the bolts to the bolt torque requirements found at the end of this document.

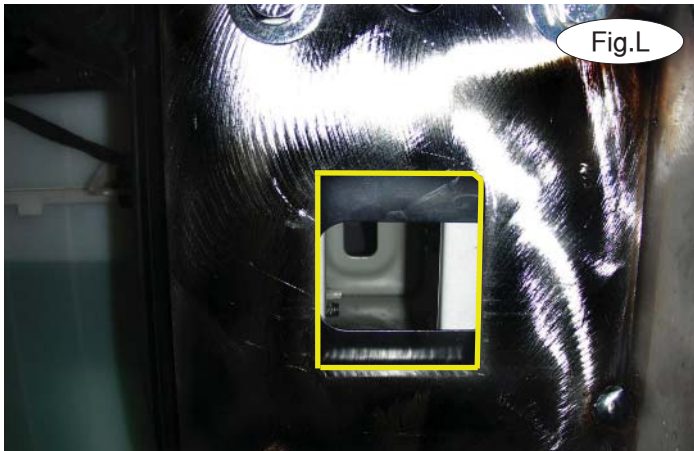


BASEPLATE KIT INSTALLATION INSTRUCTIONS

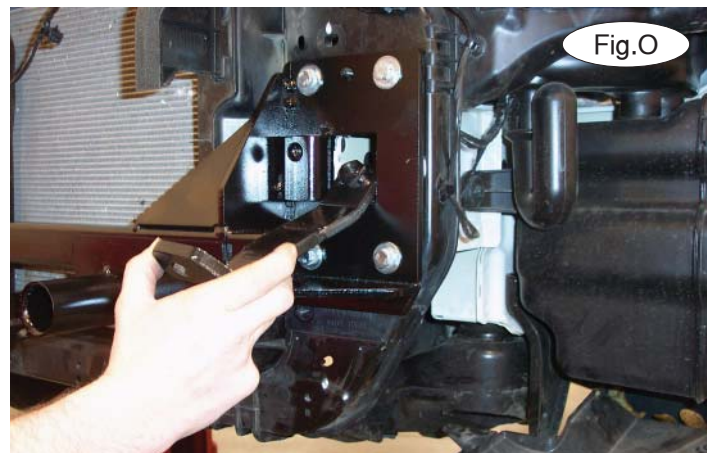
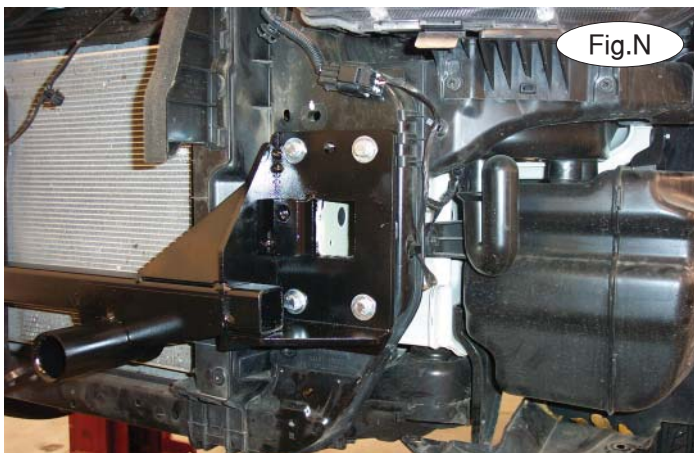
KIT# 522010-1

11/07/08
KS

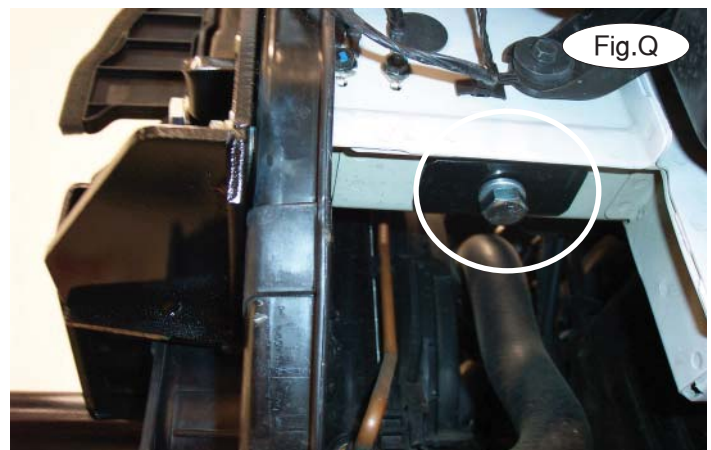
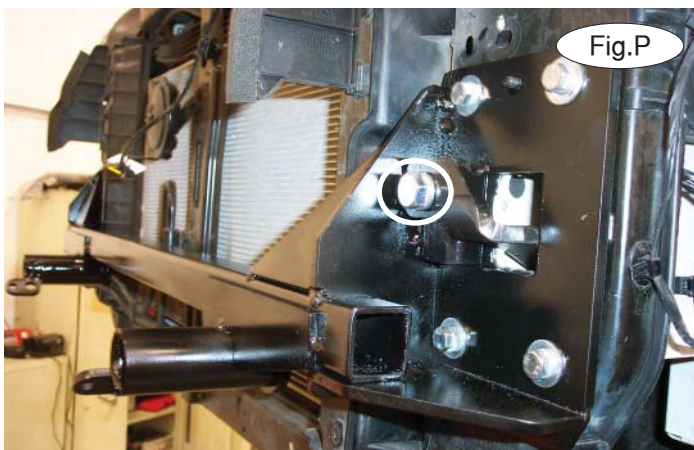
ROADMASTER, Inc. 6110 NE 127th Ave. Vancouver, WA 98682 1-800-669-9690 fax 360-735-9300 www.roadmasterinc.com



11. Using a die grinder, enlarge the openings in the ends of the rail to the size of the opening in the end plates of the brace. Use the yellow lines in Figure L to trim the driver's side and Figure M to trim the passenger side. Figure N shows the completed trimming on the driver's side.



12. Starting with the driver's side, place the rear brace in the opening of the frame rail (Fig.O).
13. Bolt the rear brace to the main receiver brace using the supplied $\frac{1}{2}$ " x $1\frac{1}{4}$ " bolt and lock washer (Fig.P).
14. Place one of the $\frac{1}{4}$ " x $1\frac{1}{2}$ " x 3" backing plates over a $\frac{1}{2}$ " x $1\frac{1}{2}$ " bolt and lock washer, and bolt through the pre-existing hole in the bottom of the frame rail and into the rear brace (Fig.Q).
15. Repeat steps 12 through 14 for the passenger side. Torque the bolts to the bolt torque requirements found at the end of this document.





BASEPLATE KIT INSTALLATION INSTRUCTIONS

KIT# 522010-1

11/07/08
KS

ROADMASTER, Inc. 6110 NE 127th Ave. Vancouver, WA 98682 1-800-669-9690 fax 360-735-9300 www.roadmasterinc.com

- 16. Reassemble the fascia, reversing steps 1 through 7.
- 17. Insert the removable front bracket arms into the front receiver braces, and twist each one 90 degrees to lock.
- 18. Attach the 8" safety cables with the cable connectors (Q-Links) to the front of the receiver braces (Fig.R).
- 19. Attach the ends of the safety cables to the tow vehicle's safety cables.
- 20. Install the tow bar to the mounting bracket according to the manufacturer's instructions.



BOLT TORQUE REQUIREMENTS

Note: The torque values represented below are intended as general guidelines. Torque requirements for specific applications may vary. Roadmaster does not warrant this information to be accurate for all applications and disclaims all liability for any claims or damages which may result from its use.

STANDARD BOLTS

Thread Size	Grade	Torque
5/16.....	5.....	13 ft./lb.
3/8.....	5.....	23 ft./lb.
7/16.....	5.....	37 ft./lb.
1/2.....	5.....	56 ft./lb.
5/8.....	5.....	150 ft./lb.

METRIC BOLTS

Thread Size	Grade	Plated / Unplated
8mm-1.0	8.8	20 ft./lb. 18 ft./lb.
8mm-1.25	8.8	19 ft./lb. 18 ft./lb.
10mm-1.25	8.8	38 ft./lb. 36 ft./lb.
10mm-1.5	8.8	37 ft./lb. 35 ft./lb.

METRIC BOLTS

Thread Size	Grade	Plated / Unplated
12mm-1.25	8.8	70 ft./lb. 65 ft./lb.
12mm-1.5	8.8	66 ft./lb. 61 ft./lb.
12mm-1.75	8.8	65 ft./lb. 60 ft./lb.
14mm-2.0	8.8	104 ft./lb. 97 ft./lb.

All illustrations and specifications contained herein are based on the latest information available at the time of publication approval. ROADMASTER, INC. reserves the right to make changes at any time without notice in material, specification and models or to discontinue models.