



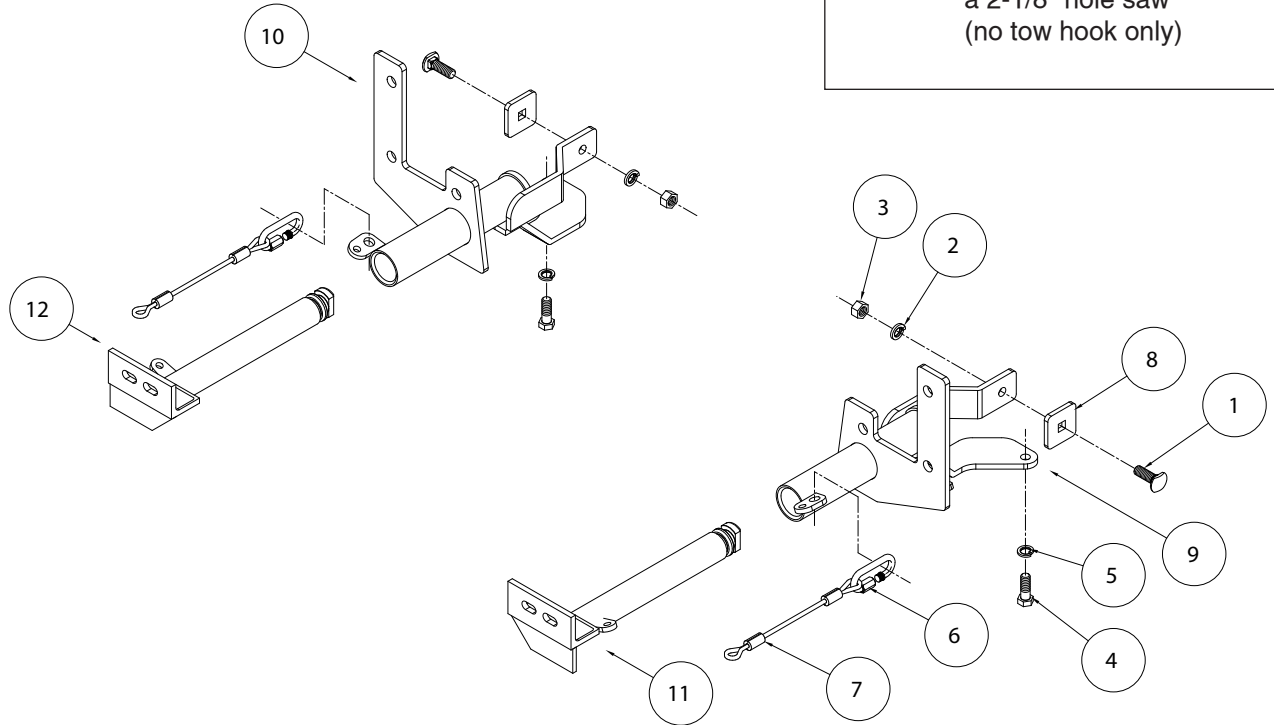
# BASEPLATE KIT INSTALLATION INSTRUCTIONS

**KIT# 52289-1**

06/17/14  
KS

ROADMASTER, Inc. 6110 NE 127th Ave. Vancouver, WA 98682 360-896-0407 fax 360-735-9300 www.roadmasterinc.com

**Special Tools Needed:**  
a die grinder  
a 2-1/8" hole saw  
(no tow hook only)



ITEM	QTY	NAME	MATERIAL
1	2	1/2" X 1 1/2" CARRIAGE BOLT W/ GROUND HEAD	A-002767
2	2	1/2" LOCK WASHER	350309-00
3	2	1/2" HEX NUT	350258-00
4	2	12mm x 1.5 x 35 mm BOLT	357102-00
5	2	12mm LOCK WASHER	355725-00
6	2	QUICK LINK	200008-00
7	2	SAFETY CABLE 8"	650646-08
8	2	1/4" x 2" x 2" SQ. HOLE BACKING PLATE	A-000189
9	1	DRIVER SIDE RECEIVER	C-001797
10	1	PASSENGER SIDE RECEIVER	C-001798
11	1	DRIVER SIDE ARM	C-001799
12	1	PASSENGER SIDE ARM	C-001800



# BASEPLATE KIT INSTALLATION INSTRUCTIONS

**KIT# 52289-1**

06/17/14  
KS

ROADMASTER, Inc. 6110 NE 127th Ave. Vancouver, WA 98682 360-896-0407 fax 360-735-9300 www.roadmasterinc.com

This is one of our EZ series brackets, which allows the visible front portion of the bracket to be easily removed from the front of the vehicle (Fig.A and Fig.B). The bracket consists of a two main receiver braces, two front removable braces and a hardware pack.

The main receiver brace mounts to the bumper support and tow hook supports. The removable front braces install in the main receiver brace.

Before starting the installation, lay out the kit components in order, as they will be used. This will give you a visual idea of how the components work, and will also confirm that everything is present and accounted for.



**IMPORTANT:** All baseplates **must** be assembled with all the bolts left loose for final adjustment and positioning (before tightening) unless otherwise instructed. All bolts **must** be torqued for proper strength. If more than one bolt is used per fastening point, the diagram may only show one. Use flat washers over all slotted holes and lock washers on all fasteners.

## WARNING

Failure to heed these warnings or follow the installation instructions may result in a voided warranty, loss of towed vehicle, personal injury or death.

- Do not weld or modify this baseplate or its components. Welding or modification will void the warranty.
- Do not use this document as a basis to design/fabricate a baseplate, as it may not show all parts or structural components.
- We strongly recommend professional installation.
- If the towed vehicle has been in an accident, it must be properly repaired before attaching the baseplate. Do not install the baseplate if any structural frame damage is found.
- The installer must use all bolts and parts supplied. If running changes were made by the vehicle manufacturer after this kit was designed, some bolts or other fasteners may no longer be the correct size. It is the installer's responsibility to verify this kit is securely fastened to the vehicle.
- Use Loctite® Red on all bolts used to secure this baseplate. Torque all bolts to the specifications found at the end of these instructions. Do not over-torque the bolts or failure may occur.
- The installer must inspect the baseplate to ensure adequate clearance, particularly around hoses, air conditioner lines, radiators, etc. or non-warranty failure may result.
- Roadmaster manufactures many styles of baseplates. If your baseplate has removable arms, they must be removed before driving the vehicle, unless the arms can be pinned or padlocked in place. If not secured, the arms could vibrate out.
- Some motorhome chassis have such a tight turning radius that you can damage your motorhome, towed vehicle, tow bar or baseplate while turning sharply. Before getting on the road, test your turning radius in an empty parking lot. Turning too sharply could result in non-warranty damage to your towing system, motorhome and/or towed vehicle.
- Do not back up with the towed vehicle attached or non-warranty damage will occur to your towing system or vehicles.
- The safety cables must connect the towing vehicle to the towed vehicle frame to frame, with the cables crossed, with enough slack for sharp turns. See cable instructions for proper routing. Failure to do so will result in non-warranty damage and/or the loss of the towed vehicle.
- This kit is designed for use with ROADMASTER tow bars and ROADMASTER adapters only. Using this kit with other brands, without an approved ROADMASTER adapter, may result in non-warranty damage or injury.
- Receiver extensions and out-of-level towing situations of 3 inches or more. This can cause the system to swing much higher and lower, causing excessive strain on the tow bar, baseplate and frame. That can cause the towing system to fail, causing property damage, personal injury or even death. If you must use a receiver extension or drop hitch to tow, it will reduce your receiver's weight capacity by 1/3 to avoid damaging your system. Never use more than one extension and/or drop hitch, as this will void your warranty.
- Every 3,000 miles, the owner must inspect all mounting points for cracks or fatigue, and check the fasteners for proper torque, according to the bolt torque requirements chart on the last page of these instructions.
- The owner must follow the vehicle manufacturer's instructions to prepare the vehicle for towing. Failure to do so may cause severe damage to the vehicle.
- This baseplate is only warranted for the original installation. Installing a used baseplate on another vehicle is not recommended and will void the warranty.

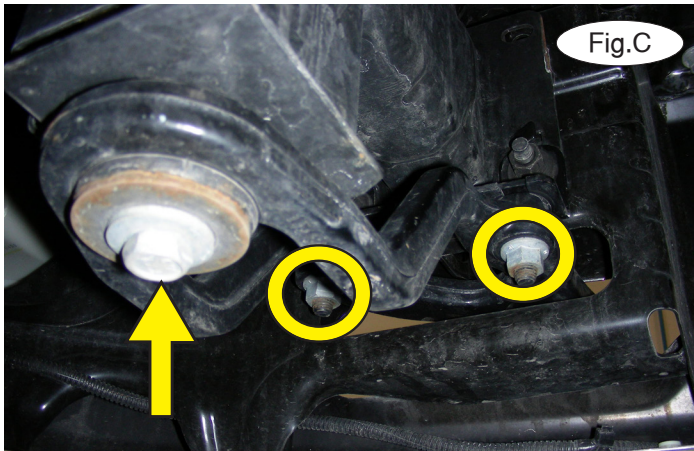


# BASEPLATE KIT INSTALLATION INSTRUCTIONS

**KIT# 52289-1**

06/17/14  
KS

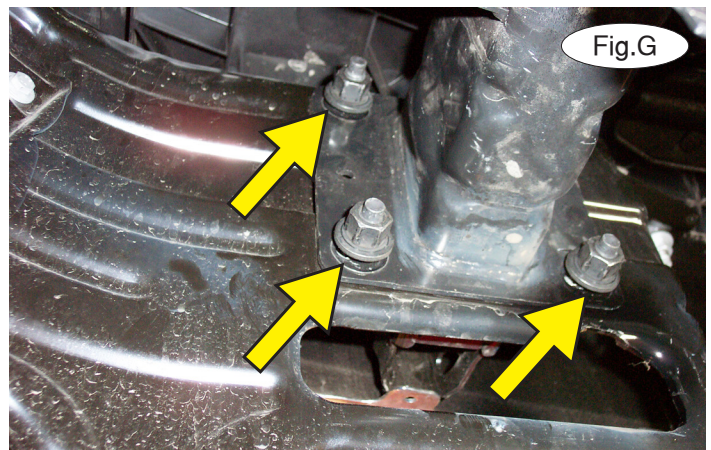
ROADMASTER, Inc. 6110 NE 127th Ave. Vancouver, WA 98682 360-896-0407 fax 360-735-9300 www.roadmasterinc.com



1. **Important:** please use all supplied bolts and parts and read all instructions carefully before beginning this installation. The majority of questions you may have can be answered within the text, and proper installation will ensure safe and secure travel. Now, begin the installation. **Vehicles without tow hooks:** proceed to step 2. **For vehicles equipped with tow hooks:** the tow hooks will need to be removed before beginning the installation. On each side, remove an 18mm (head) bolt and two 18mm nuts attaching the tow hook to the frame (Fig.C).



2. Grille removal will depend upon the fascia on the vehicle. **If the grille is shaped like Figure D:** remove six plastic fasteners along the top inside edge of the grille insert. Using a screwdriver, pry upward on the bottom of the grille insert to release it. **If the grille is shaped like Figure E:** there will be 12 tabs to release from the backside of the grille. **If the grille is shaped like Figure F:** remove four 10mm (head) bolts to remove the grille inserts indicated with yellow arrows in Figure F. The inserts will not be replaced. Retain the grille inserts for replacement in case the bracket is ever removed.



3. On each side, remove three 18mm bumper nuts (Fig.G – driver's side). **Note:** if equipped with tow hooks, the bumper nuts are securing the tow hook bracket, which will be removed and will not be replaced. Retain the tow hook bracket for replacement in case the bracket is ever removed.



# BASEPLATE KIT INSTALLATION INSTRUCTIONS

**KIT# 52289-1**

06/17/14  
KS

ROADMASTER, Inc. 6110 NE 127th Ave. Vancouver, WA 98682 360-896-0407 fax 360-735-9300 www.roadmasterinc.com



Fig.H

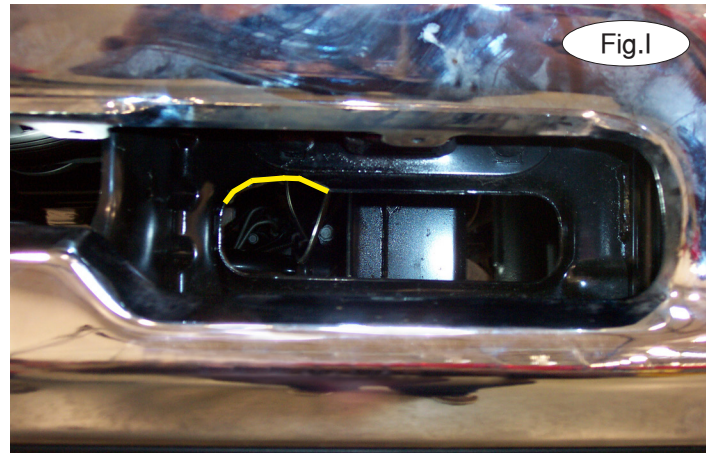


Fig.I

4. If the vehicle has an inner bumper support with a large, slotted hole: cut out the provided template and place it over the existing hole on the inner bumper support on each side of the car (Fig.H – driver's side). Trace, and trim using a die grinder. The yellow lines in Figure I represent the trimmed area on the driver's side. **If it does not:** proceed to step 5.

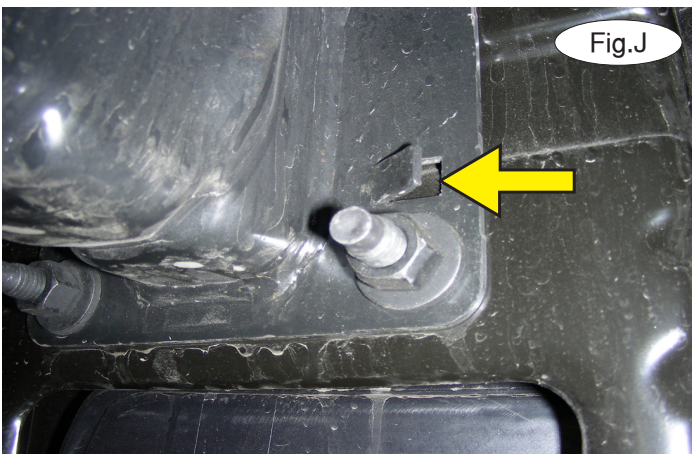


Fig.J

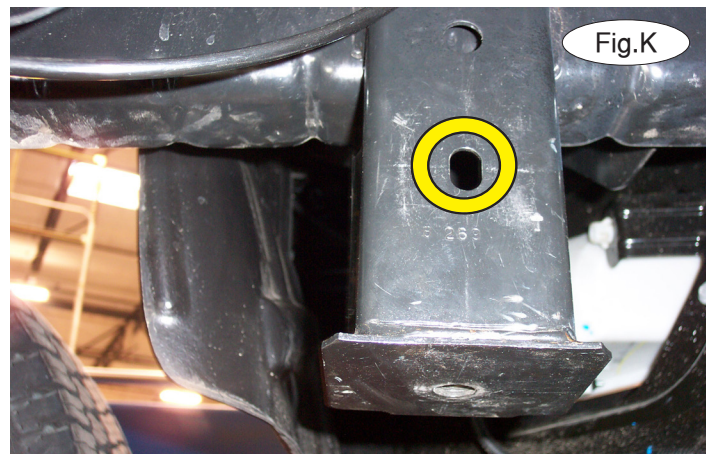


Fig.K

5. On each side, locate the tab near the bumper mounting studs (Fig.J). Use a cut-off wheel to remove it, or a hammer to flatten it.

6. Locate the slotted opening on the inside edge of the tow hook support on each side of the vehicle (Fig.K). Using a die grinder, enlarge the opening to accommodate a 1/2" bolt (Fig.L).

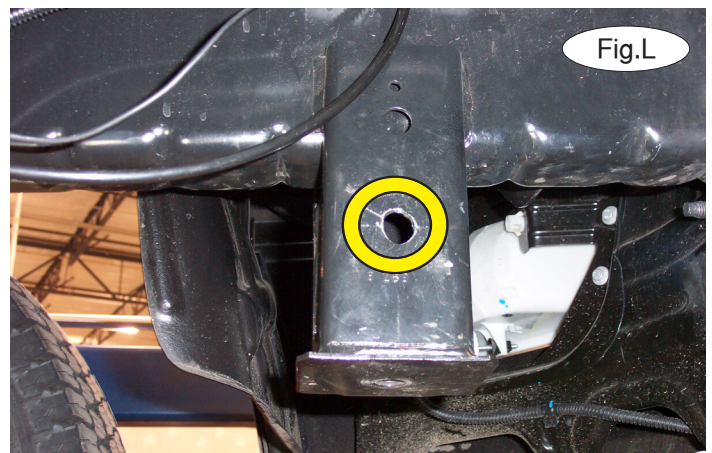


Fig.L

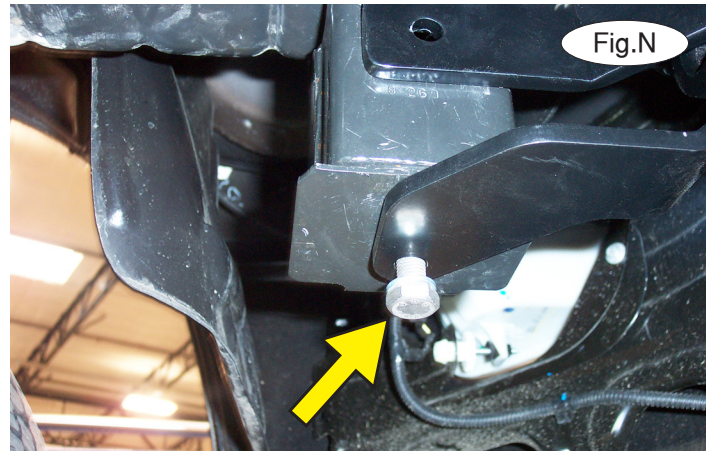
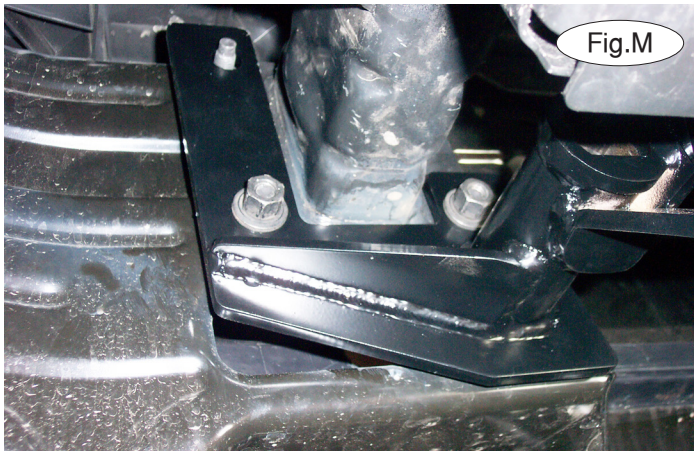


# BASEPLATE KIT INSTALLATION INSTRUCTIONS

**KIT# 52289-1**

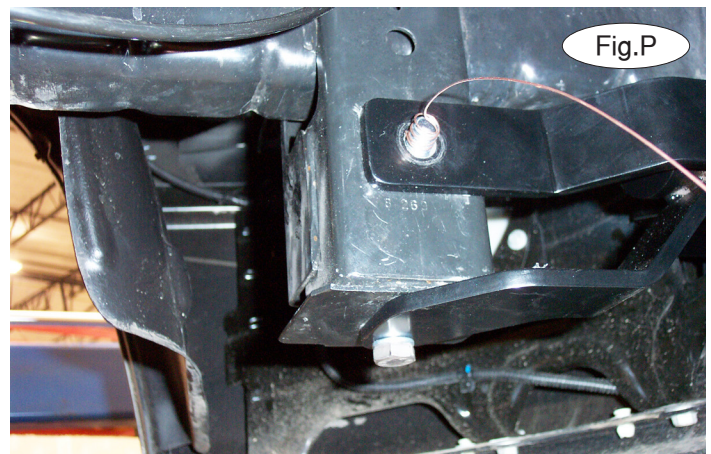
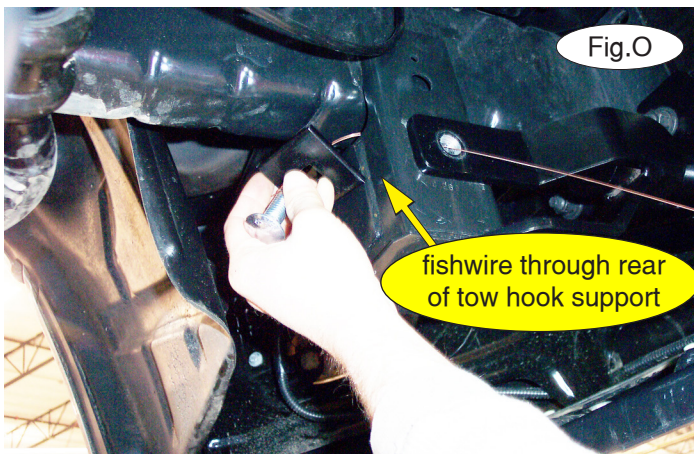
06/17/14  
KS

ROADMASTER, Inc. 6110 NE 127th Ave. Vancouver, WA 98682 360-896-0407 fax 360-735-9300 www.roadmasterinc.com



7. On each side, place the main receiver brace over the studs and replace the 18mm nuts you removed in step 3 (Fig M – driver's side). *Note:* use thread lock on the factory nuts prior to reinstalling them.

8. Working on the driver's side, use a 12mm x 1.5 x 35mm and lock washer to bolt through the lower support and into the tow hook mount (Fig.N). Starting with the bumper bolts, torque all bolts to the bolt torque requirements found at the end of this document. Repeat for the passenger side.



9. **Before starting this step, ensure that the hole you enlarged in step 6 is sufficient to fishwire a ½" bolt through it now that the vertical mount of the bracket is in place.**

Then, working on the driver's side, fishwire a ¼" x 2" x 2" backing plate and a ½" x 1½" carriage bolt through the gap between the frame and the top rear of the tow hook support and out the hole you enlarged in step 6 (Fig.O). The completed fishwire is shown in Figure P.

Using a ½" lock washer and nut, bolt the assembly into place. Repeat for the passenger side. Tighten the bolt to the bolt torque requirements found at the end of this document.

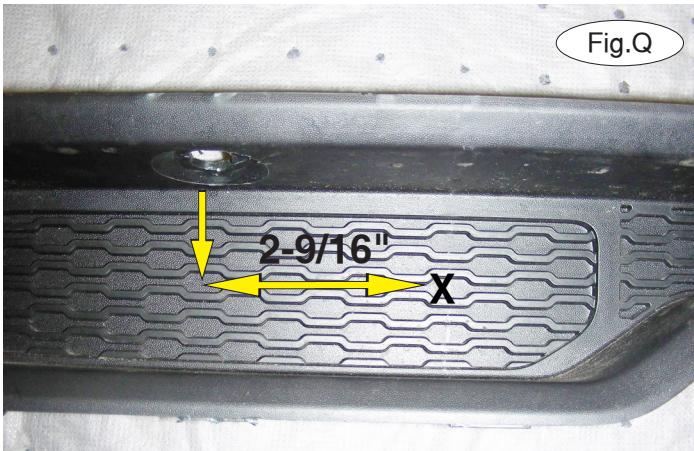


# BASEPLATE KIT INSTALLATION INSTRUCTIONS

**KIT# 52289-1**

06/17/14  
KS

ROADMASTER, Inc. 6110 NE 127th Ave. Vancouver, WA 98682 360-896-0407 fax 360-735-9300 www.roadmasterinc.com



10. Trimming the grille will be determined by the grille shape. **If the grille is shaped like Figure D:** mark each side of the grille as shown in Figure Q. Then, hold it in place over the receiver braces to verify measurements before trimming with a 2-1/8" hole saw to allow for clearance of the main receiver brace. Trim the quick-link area as shown in Figure R. **If the grille is shaped like Figure E:** use Figure S as a reference for trimming. **If the grille is shaped like Figure F:** it does not require trimming.



11. Insert the removable front bracket arms into the front receiver braces, and twist each one 90 degrees to lock.
12. Attach the 8" safety cables with the cable connectors (Q-Links) to the front of the receiver braces (Fig.T).
13. Attach the ends of the safety cables to the tow vehicle's safety cables.
14. Install the tow bar to the mounting bracket according to the manufacturer's instructions.

## BOLT TORQUE REQUIREMENTS

Note: The torque values represented below are intended as general guidelines. Torque requirements for specific applications may vary. Roadmaster does not warrant this information to be accurate for all applications and disclaims all liability for any claims or damages which may result from its use.

### STANDARD BOLTS

Thread Size	Grade	Torque
5/16.....	5.....	13 ft./lb.
3/8.....	5.....	23 ft./lb.
7/16.....	5.....	37 ft./lb.
1/2.....	5.....	56 ft./lb.
5/8.....	5.....	150 ft./lb.

### METRIC BOLTS

Thread Size	Grade	Plated / Unplated
8mm-1.0.....	8.8.....	20 ft./lb. 18 ft./lb.
8mm-1.25.....	8.8.....	19 ft./lb. 18 ft./lb.
10mm-1.25.....	8.8.....	38 ft./lb. 36 ft./lb.
10mm-1.5.....	8.8.....	37 ft./lb. 35 ft./lb.

### METRIC BOLTS

Thread Size	Grade	Plated / Unplated
12mm-1.25.....	8.8.....	70 ft./lb. 65 ft./lb.
12mm-1.5.....	8.8.....	66 ft./lb. 61 ft./lb.
12mm-1.75.....	8.8.....	65 ft./lb. 60 ft./lb.
14mm-2.0.....	8.8.....	104 ft./lb. 97 ft./lb.

All illustrations and specifications contained here are based on the latest information available at the time of publication, approval, or printing. ROADMASTER, INC. reserves the right to make changes at any time without notice in material, specifications and models or to discontinue models.

**KIT# 52289-1**

06/17/14  
KS

***Template for models with  
inner bumper support with  
a large, slotted hole ONLY***

