



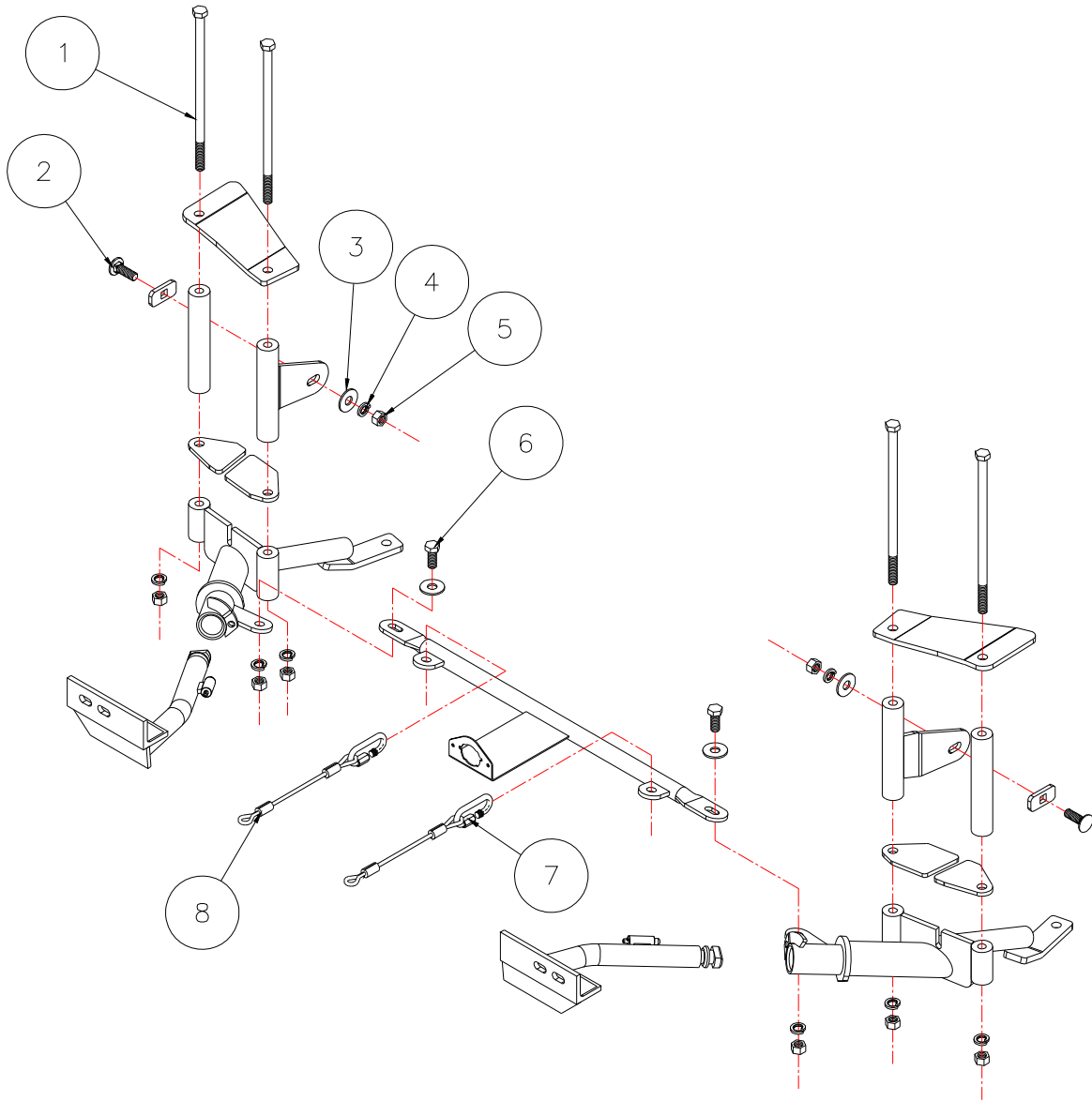
BASEPLATE KIT INSTALLATION INSTRUCTIONS

KIT# 523118-1

12/21/07
KS

ROADMASTER, Inc. 6110 NE 127th Ave. Vancouver, WA 98682 1-800-669-9690 fax 360-735-9300 www.roadmasterinc.com

ROADMASTER, INC.



Item	Qty	Length	Width	Hardware	Material
1	4	11"	1/2"	BOLT	350176-00
2	2	1 1/2"	1/2"	CARRIAGE BOLT	350362-00
3	4		1/2"	FLAT WASHER	350308-00
4	8		1/2"	LOCK WASHER	350309-00
5	8		1/2"	NUT	350258-00
6	2	1 1/4"	1/2"	BOLT	350094-00
7	2			CONNECTOR	200008-00
8	2	12"		SAFETY CABLE	500646-12

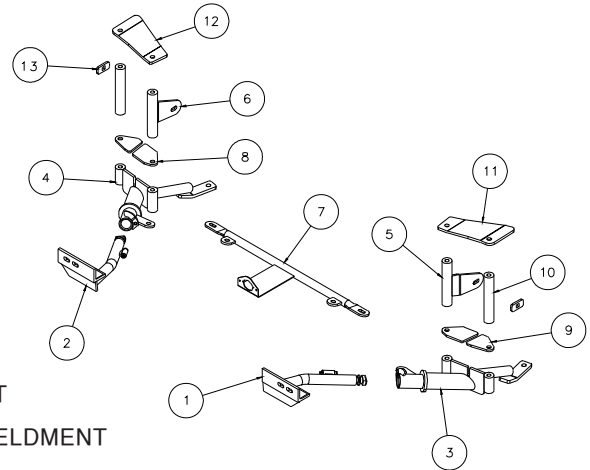


BASEPLATE KIT INSTALLATION INSTRUCTIONS

KIT# 523118-1

12/21/07
KS

ROADMASTER, Inc. 6110 NE 127th Ave. Vancouver, WA 98682 1-800-669-9690 fax 360-735-9300 www.roadmasterinc.com



Item	Qty	Part No.	Assembly
1	1	C-000716	DRIVER SIDE ARM WELDMENT
2	1	C-000717	PASSENGER SIDE ARM WELDMENT
3	1	C-000718	DRIVER SIDE RECEIVER BRACE WELDMENT
4	1	C-000719	PASSENGER SIDE RECEIVER BRACE WELDMENT
5	1	C-000720	DRIVER SIDE MID FRAME WELDMENT
6	1	C-000721	PASSENGER SIDE MID FRAME WELDMENT
7	1	C-000722	CROSS BAR WELDMENT
8	2	A-001214	INSIDE BACKING PLATE

IMPORTANT: All baseplates **must** be assembled with all the bolts left loose for final adjustment and positioning (before tightening) unless otherwise instructed. All bolts **must** be torqued for proper strength. If more than one bolt is used per fastening point, the diagram may only show one. Use flat washers over all slotted holes and lock washers on all fasteners.

WARNING

Failure to heed these warnings or follow the installation instructions may result in a voided warranty, loss of towed vehicle, personal injury or death.

- Do not weld or modify this baseplate or its components. Welding or modification will void the warranty.
- Do not use this document as a basis to design/fabricate a baseplate, as it may not show all parts or structural components.
- We strongly recommend professional installation.
- If the towed vehicle has been in an accident, it must be properly repaired before attaching the baseplate. Do not install the baseplate if any structural frame damage is found.
- The installer must use all bolts and parts supplied. If running changes were made by the vehicle manufacturer after this kit was designed, some bolts or other fasteners may no longer be the correct size. It is the installer's responsibility to verify this kit is securely fastened to the vehicle.
- Use Loctite® Red on all bolts used to secure this baseplate. Torque all bolts to the specifications found at the end of these instructions. Do not over-torque the bolts or failure may occur.
- The installer must inspect the baseplate to ensure adequate clearance, particularly around hoses, air conditioner lines, radiators, etc. or non-warranty failure may result.
- Roadmaster manufactures many styles of baseplates. If your baseplate has removable arms, they must be removed before driving the vehicle, unless the arms can be pinned or padlocked in place. If not secured, the arms could vibrate out.
- Some motorhome chassis have such a tight turning radius that you can damage your motorhome, towed vehicle, tow bar or baseplate while turning sharply. Before getting on the road, test your turning radius in an empty parking lot. Turning too sharply could

result in non-warranty damage to your towing system, motorhome and/or towed vehicle.

- Do not back up with the towed vehicle attached or non-warranty damage will occur to your towing system or vehicles.
- The safety cables must connect the towing vehicle to the towed vehicle frame to frame, with the cables crossed, with enough slack for sharp turns. See cable instructions for proper routing. Failure to do so will result in non-warranty damage and/or the loss of the towed vehicle.
- This kit is designed for use with ROADMASTER tow bars and ROADMASTER adapters only. Using this kit with other brands, without an approved ROADMASTER adapter, may result in non-warranty damage or injury.
- Receiver extensions and out-of-level towing situations of 3 inches or more. This can cause the system to swing much higher and lower, causing excessive strain on the tow bar, baseplate and frame. That can cause the towing system to fail, causing property damage, personal injury or even death. If you must use a receiver extension or drop hitch to tow, it will reduce your receiver's weight capacity by 1/3 to avoid damaging your system. Never use more than one extension and/or drop hitch, as this will void your warranty.
- Every 3,000 miles, the owner must inspect all mounting points for cracks or fatigue, and check the fasteners for proper torque, according to the bolt torque requirements chart on the last page of these instructions.
- The owner must follow the vehicle manufacturer's instructions to prepare the vehicle for towing. Failure to do so may cause severe damage to the vehicle.
- This baseplate is only warranted for the original installation. Installing a used baseplate on another vehicle is not recommended and will void the warranty.



BASEPLATE KIT INSTALLATION INSTRUCTIONS

KIT# 523118-1

12/21/07
KS

ROADMASTER, Inc. 6110 NE 127th Ave. Vancouver, WA 98682 1-800-669-9690 fax 360-735-9300 www.roadmasterinc.com

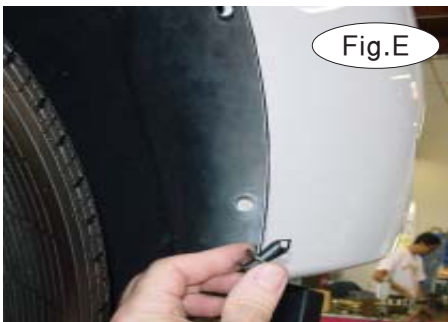
1. This bracket kit is one of our EZ lock series, which is designed to be partly removable. The kit consists of two main receiver braces, two tubular front braces, two mid frame braces, two upper braces, two spacers, a cross brace and a hardware pack. The main receiver braces mount to the frame behind the front bumper fascia on each side (Fig.A). The tubular main braces insert through the front lower bumper fascia and rotate 90 degrees to lock in place. Lay the kit components out as they are illustrated before the installation. This will give you a visual idea of how the kit installs and also confirm that the kit components are present and accounted for. The headlights will have to be removed and lower splash panels loosened to access the frame mounting area.



2. **Important:** please use all supplied bolts and parts and read all instructions carefully before beginning this installation. The majority of questions you may have can be answered within the text, and proper installation will ensure safe and secure travel. Now, begin the installation by removing four plastic fasteners located in the top of the fascia (Fig.B) this will allow you to remove the headlights in the next step.

3. Remove the headlight retainers (2 per headlight) (Fig.C) then disconnect and set the head lights aside (Fig.D).

4. Go to the fender wells and remove three plastic fasteners per side (Fig.E) then five more from the bottom



of the fascia (Fig.F). Remove any additional fasteners needed to access the bottom of the frame (Fig.G).

5. Working on one side at a time, remove a front sub frame mount bolt (Fig.H).



BASEPLATE KIT INSTALLATION INSTRUCTIONS

KIT# 523118-1

12/21/07
KS

ROADMASTER, Inc. 6110 NE 127th Ave. Vancouver, WA 98682 1-800-669-9690 fax 360-735-9300 www.roadmasterinc.com



Fig.H



Fig.I



Fig.J

6. If air conditioning lines or condenser lines interfere with the bracket, bend them slightly toward the rear of the car. Hold a receiver brace in position as shown under the frame and bolt through the rear mounting hole with the sub frame bolt (Fig.I). Tighten this bolt enough to hold the receiver brace in position.

7. Position a top plate on the top of the frame so the bent ends are parallel to the ground with the smaller end over the inside of the frame as shown (Fig.J).

8. Position the mid brace on the inside of the frame with the mounting ear pointing towards the rear then bolt



Fig.K



Fig.L



Fig.M

through the top plate, inner brace, bottom plate and receiver brace with a 1/2" x 11" bolt lock washer and nut (Fig.J,K,L,M). Bolt through the other side of the plate, 6 7/8" spacer tube, outside lower plate and receiver brace in the same manner (Fig.N,O).

9. Fish wire a 1/2" x 1 1/2" carriage bolt and 1" x 2" sq. hole backing plate through the bottom of the frame (Fig.P) into the side mounting ear and secure with a lock washer and nut (Fig.Q).

10. Repeat steps 5 through 9 on the remaining side.



Fig.N



Fig.O

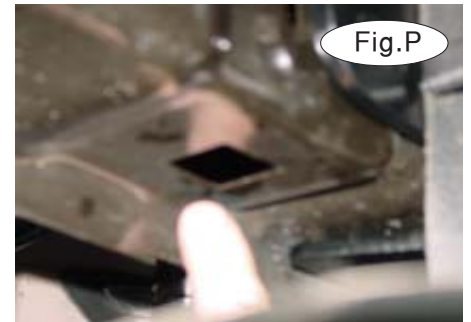


Fig.P



BASEPLATE KIT INSTALLATION INSTRUCTIONS

KIT# 523118-1

12/21/07
KS

ROADMASTER, Inc. 6110 NE 127th Ave. Vancouver, WA 98682 1-800-669-9690 fax 360-735-9300 www.roadmasterinc.com



Fig.Q



Fig.R



Fig.S



Fig.T



Fig.U



Fig.V

11. Install the cross bar with two ½" x 1¼" bolts, flat washers, lock washers and nuts (Fig.R,S). Installation of this cross bar may vary. It can be positioned so that the wire plug mounting plate may go up or down, depending on the grill opening for that particular model.

12. Insert the front braces into the rear receiver braces and twist 90 degrees to lock into position (Fig.T,U). Measure across the front mounting holes and align to 30" O.C for the outer holes and 27" O.C on the inner holes. Also check for center. Once aligned tighten all mounting bolts to the torque specifications below. *Note:* slight trimming may be required before inserting tubes (Fig.V). The grill insert that may need to be trimmed is removable.

13. Reverse steps 2 through 3 to reinstall the headlights.

14. Trial fit the lower splash panels and trim to fit in the areas shown (Fig.W,X,Y).

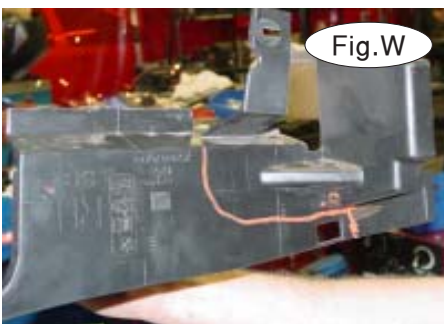


Fig.W



Fig.X



Fig.Y



BASEPLATE KIT INSTALLATION INSTRUCTIONS

KIT# 523118-1

12/21/07
KS

ROADMASTER, Inc. 6110 NE 127th Ave. Vancouver, WA 98682 1-800-669-9690 fax 360-735-9300 www.roadmasterinc.com

15. Mount the tow bar following the manufacturer's instructions then torque all mounting bolts to the specifications below.

16. Attach one end of the included 12" safety cables to the rear holes on the main receiver brace with the included cable connectors as shown (Fig.Z,AA). Connect the other end to the tow vehicle's safety cables and the tow bar.



Fig.V



Fig.V

BOLT TORQUE REQUIREMENTS

Note: The torque values represented below are intended as general guidelines. Torque requirements for specific applications may vary. Roadmaster does not warrant this information to be accurate for all applications and disclaims all liability for any claims or damages which may result from its use.

STANDARD BOLTS

Thread Size	Grade	Torque
5/16	5	13 ft./lb.
3/8	5	23 ft./lb.
7/16	5	37 ft./lb.
1/2	5	56 ft./lb.
5/8	5	150 ft./lb.

METRIC BOLTS

Thread Size	Grade	Plated / Unplated
8mm-1.0	8.8	20 ft./lb. 18 ft./lb.
8mm-1.25	8.8	19 ft./lb. 18 ft./lb.
10mm-1.25	8.8	38 ft./lb. 36 ft./lb.
10mm-1.5	8.8	37 ft./lb. 35 ft./lb.

METRIC BOLTS

Thread Size	Grade	Plated / Unplated
12mm-1.25	8.8	70 ft./lb. 65 ft./lb.
12mm-1.5	8.8	66 ft./lb. 61 ft./lb.
12mm-1.75	8.8	65 ft./lb. 60 ft./lb.
14mm-2.0	8.8	104 ft./lb. 97 ft./lb.

All illustrations and specifications contained herein are based on the latest information available at the time of publication approval. ROADMASTER, INC. reserves the right to make changes at any time without notice in material, specification and models or to discontinue models.