

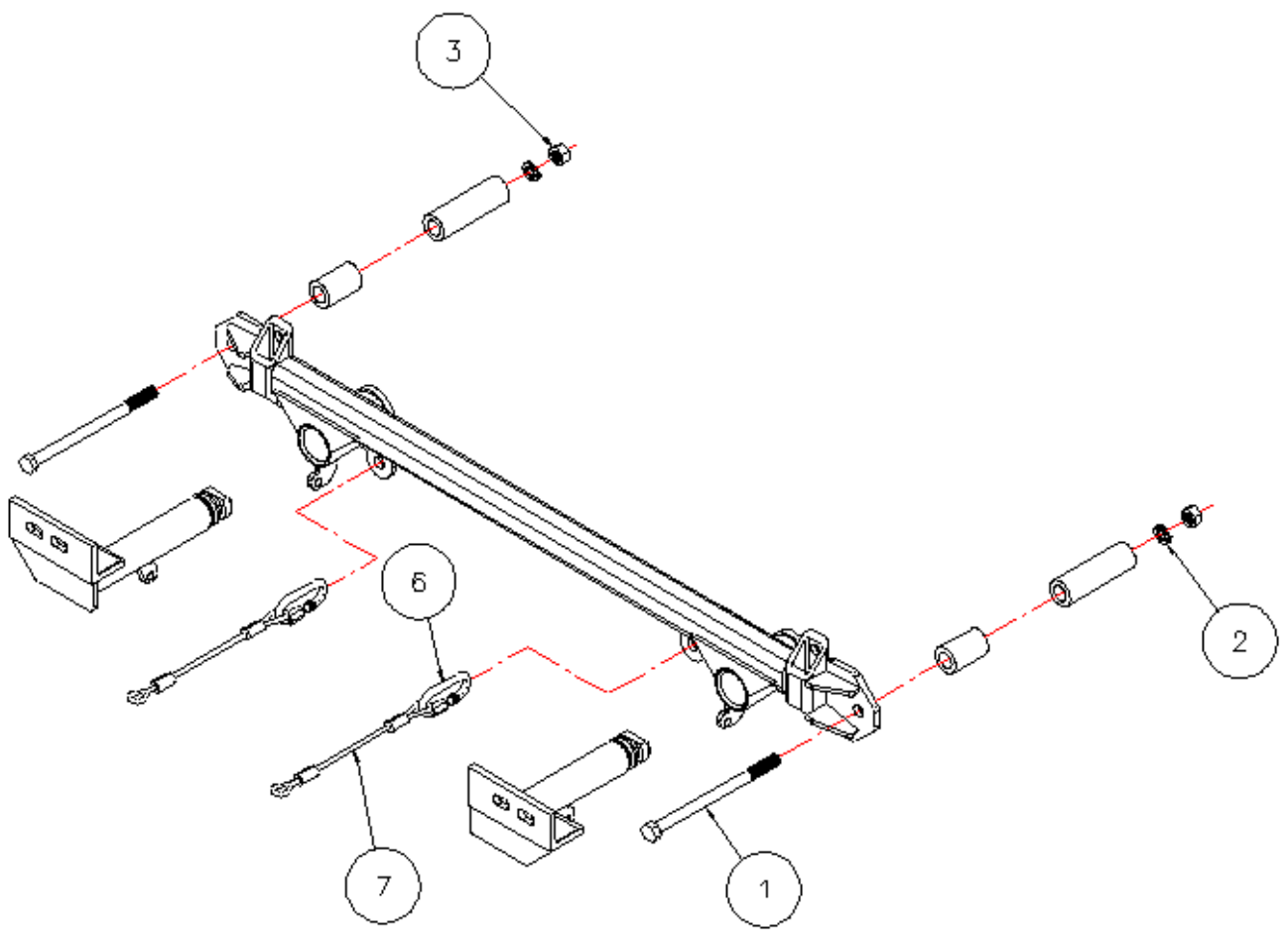


# BASEPLATE KIT INSTALLATION INSTRUCTIONS

**KIT# 523126-1**

11/30/17  
KS

ROADMASTER, Inc. 6110 NE 127th Ave. Vancouver, WA 98682 360-896-0407 fax 360-735-9300 www.roadmasterinc.com

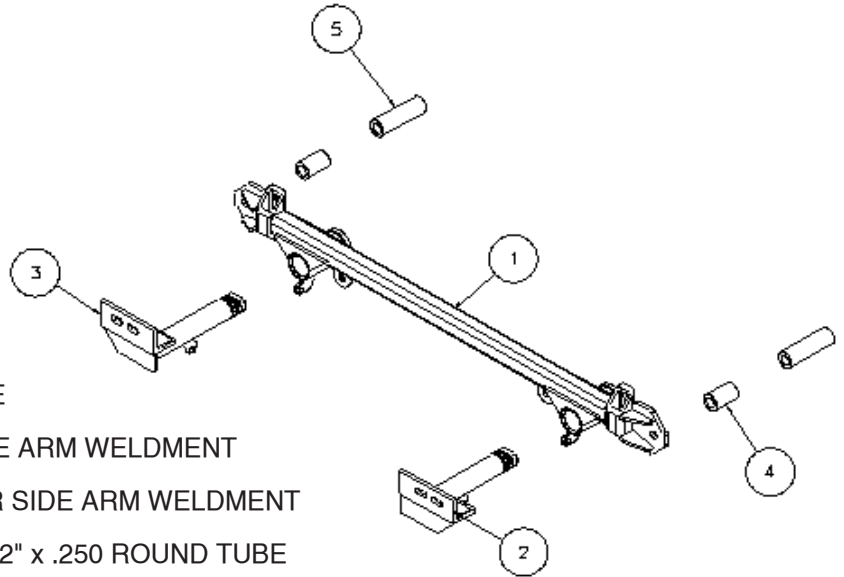


Item	Qty	Length	Width	Hardware	Part No.
1	2	7 1/2"	1/2"	1/2" x 7 1/2" BOLT	350112-00
2	2	1/2"		LOCK WASHER	350309-00
3	2	1/2"		NUT	350258-00
6	2			CABLE CONNECTOR	200008-00
7	2	8"		SAFETY CABLE, 8,000 lb. rated	650648-08



# BASEPLATE KIT INSTALLATION INSTRUCTIONS

ROADMASTER, Inc. 6110 NE 127th Ave. Vancouver, WA 98682 360-896-0407 fax 360-735-9300 www.roadmasterinc.com



Item	Qty	Part No.	Assembly
1	1	C-000977	MAIN BRACE
2	1	C-000978	DRIVER SIDE ARM WELDMENT
3	1	C-000979	PASSENGER SIDE ARM WELDMENT
4	2	A-001462	1 1/4" O.D. x 2" x .250 ROUND TUBE
5	2	A-001634	1 1/4" O.D. x 4" x .250 ROUND TUBE

**IMPORTANT:** All baseplates *must* be assembled with all the bolts left loose for final adjustment and positioning (before tightening) unless otherwise instructed. All bolts *must* be torqued for proper strength. If more than one bolt is used per fastening point, the diagram may only show one. Use flat washers over all slotted holes and lock washers on all fasteners.

## WARNING

Failure to heed these warnings or follow the installation instructions may result in a voided warranty, loss of towed vehicle, personal injury or death.

- Do not weld or modify this baseplate or its components. Welding or modification will void the warranty.
- Do not use this document as a basis to design/fabricate a baseplate, as it may not show all parts or structural components.
- We strongly recommend professional installation.
- If the towed vehicle has been in an accident, it must be properly repaired before attaching the baseplate. Do not install the baseplate if any structural frame damage is found.
- The installer must use all bolts and parts supplied. If running changes were made by the vehicle manufacturer after this kit was designed, some bolts or other fasteners may no longer be the correct size. It is the installer's responsibility to verify this kit is securely fastened to the vehicle.
- Use Loctite® Red on all bolts used to secure this baseplate. Torque all bolts to the specifications found at the end of these instructions. Do not over-torque the bolts or failure may occur.
- The installer must inspect the baseplate to ensure adequate clearance, particularly around hoses, air conditioner lines, radiators, etc. or non-warranty failure may result.
- Roadmaster manufactures many styles of baseplates. If your baseplate has removable arms, they must be removed before driving the vehicle, unless the arms can be pinned or padlocked in place. If not secured, the arms could vibrate out.
- Some motorhome chassis have such a tight turning radius that you can damage your motorhome, towed vehicle, tow bar or baseplate while turning sharply. Before getting on the road, test your turning radius in an empty parking lot. Turning too sharply could

result in non-warranty damage to your towing system, motorhome and/or towed vehicle.

- Do not back up with the towed vehicle attached or non-warranty damage will occur to your towing system or vehicles.
- The safety cables must connect the towing vehicle to the towed vehicle frame to frame, with the cables crossed, with enough slack for sharp turns. See cable instructions for proper routing. Failure to do so will result in non-warranty damage and/or the loss of the towed vehicle.
- This kit is designed for use with ROADMASTER tow bars and ROADMASTER adapters only. Using this kit with other brands, without an approved ROADMASTER adapter, may result in non-warranty damage or injury.
- Receiver extensions and out-of-level towing situations of 3 inches or more. This can cause the system to swing much higher and lower, causing excessive strain on the tow bar, baseplate and frame. That can cause the towing system to fail, causing property damage, personal injury or even death. If you must use a receiver extension or drop hitch to tow, it will reduce your receiver's weight capacity by 1/3 to avoid damaging your system. Never use more than one extension and/or drop hitch, as this will void your warranty.
- Every 3,000 miles, the owner must inspect all mounting points for cracks or fatigue, and check the fasteners for proper torque, according to the bolt torque requirements chart on the last page of these instructions.
- The owner must follow the vehicle manufacturer's instructions to prepare the vehicle for towing. Failure to do so may cause severe damage to the vehicle.
- This baseplate is only warranted for the original installation. Installing a used baseplate on another vehicle is not recommended and will void the warranty.



# BASEPLATE KIT INSTALLATION INSTRUCTIONS

**KIT# 523126-1**

11/30/17  
KS

ROADMASTER, Inc. 6110 NE 127th Ave. Vancouver, WA 98682 360-896-0407 fax 360-735-9300 www.roadmasterinc.com



1. This is one of our EZ bracket series, which allows the visible front portion of the brackets to be easily removed from the front of the vehicle (Fig.A). **Important: please use all supplied bolts and parts and read all instructions carefully before beginning this installation. The majority of questions you may have can be answered within the text, and proper installation will ensure safe and secure travel.**

2. Remove two screws (7mm head) from the top of the grille (Fig.B), pull forward to remove then set aside (Fig.C).



3. Remove two nuts (10mm) holding the top of the fascia (Fig.D).

4. Remove two more screws (7mm head) in each fender well splash panel (Fig.E) then two plastic fasteners in under the front of each of each fender well (Fig.F).



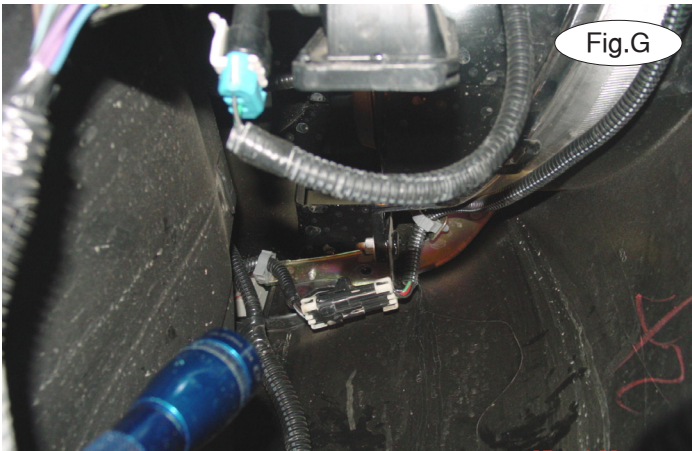


# BASEPLATE KIT INSTALLATION INSTRUCTIONS

**KIT# 523126-1**

11/30/17  
KS

ROADMASTER, Inc. 6110 NE 127th Ave. Vancouver, WA 98682 360-896-0407 fax 360-735-9300 www.roadmasterinc.com



5. Remove three bolts (10mm head in each fender well) (Fig.G,H).
6. Disconnect the light harness (Fig.I) then pull forward to remove the fascia and set aside.



7. Next, remove the steel bumper bar (four 15mm nuts) (Fig.J) and replace with the main receiver brace (Fig.K) using the existing 15mm nuts to hold in place.

8. Make sure the receiver brace is aligned then tighten the 15mm nuts to hold in position. Using the receiver brace as a drill guide, drill a 17/32" hole through the front and rear frame flange on each side (Fig.L).



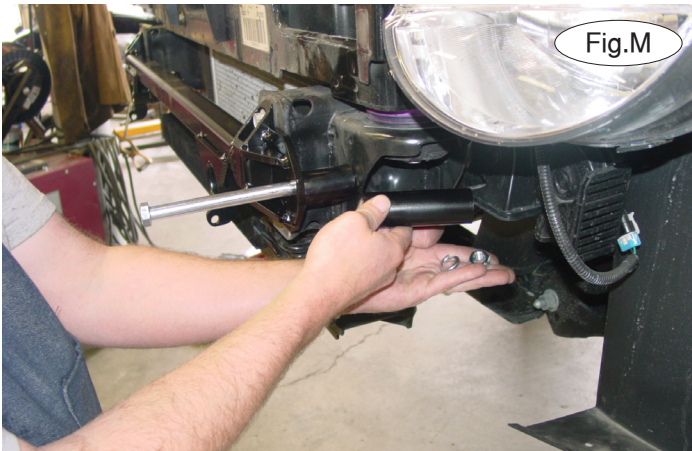


# BASEPLATE KIT INSTALLATION INSTRUCTIONS

**KIT# 523126-1**

11/30/17  
KS

ROADMASTER, Inc. 6110 NE 127th Ave. Vancouver, WA 98682 360-896-0407 fax 360-735-9300 www.roadmasterinc.com



9. Bolt through each side of the frame flanges and 2" and 4" spacers with  $\frac{1}{2}$ " x  $7\frac{1}{2}$ " bolts, lock washers and nuts (Fig.M). The 2" spacer fits between the receiver brace and the front of the frame while the 4" spacer fits between the frame flanges. Torque all mounting bolts to the torque specifications on the last page.

10. Go to the cowl and remove the lower grille retaining ring from the retainer clips remove the lower grille (Fig.N).



11. Trial fit the fascia (Fig.O), then determine at this time whether you want to leave the lower grille out or trim the grille to fit around the braces and reinstall the trimmed grille.

12. Once the grille decision is made, reinstall the fascia reversing steps 2 through 6 (Fig.P).

13. Install the front braces in the receivers and then turn 90 degrees to lock in place (Fig.Q).





# BASEPLATE KIT INSTALLATION INSTRUCTIONS

**KIT# 523126-1**

11/30/17  
KS

ROADMASTER, Inc. 6110 NE 127th Ave. Vancouver, WA 98682 360-896-0407 fax 360-735-9300 www.roadmasterinc.com

14. Connect the 8" safety cables to the cable tabs located on the side of the receivers with the included cable connectors. (Fig.Q,R). Connect the other end to the tow vehicle's safety cables.

15. Mount the tow bar according to the manufacturer's instructions.



## BOLT TORQUE REQUIREMENTS

Note: The torque values represented below are intended as general guidelines. Torque requirements for specific applications may vary. Roadmaster does not warrant this information to be accurate for all applications and disclaims all liability for any claims or damages which may result from its use.

### STANDARD BOLTS

Thread Size	Grade	Torque
5/16-18	5	13 ft./lb.
3/8-16	5	23 ft./lb.
7/16-14	5	37 ft./lb.
1/2-13	5	57 ft./lb.
5/8-11	5	112 ft./lb.

### METRIC BOLTS

Thread Size	Grade	Torque
6mm-1.0	8.8	6 ft./lb.
8mm-1.0	8.8	18 ft./lb.
8mm-1.25	8.8	16 ft./lb.
10mm-1.25	8.8	36 ft./lb.
10mm-1.5	8.8	31 ft./lb.

### METRIC BOLTS

Thread Size	Grade	Torque
12mm-1.25	8.8	64 ft./lb.
12mm-1.5	8.8	60 ft./lb.
12mm-1.75	8.8	55 ft./lb.
14mm-2.0	8.8	88 ft./lb.

All illustrations and specifications contained herein are based on the latest information available at the time of publication approval. ROADMASTER, INC. reserves the right to make changes at any time without notice in material, specification and models or to discontinue models.