



Installation Instructions

Endlink Kit for the Chevy/GMC 4500/5500 Front Anti-Sway Bar

part #590066-00 (2 links) left and right

Note: This kit should only be used in conjunction with the 1109-158 front anti-sway bar kit.

SUGGESTED TOOLS

The following tools are suggested to complete the installation procedures:

- General hand tools

WARNING

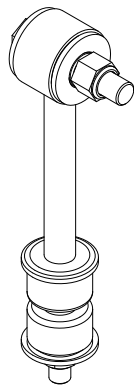
Failure to follow these instructions can result in property damage, personal injury or even death.

- If raising the vehicle to install the anti-sway bar, always support the vehicle with jack stands at both frame rails or at the rear axle before working underneath. Ensure that the jack stands are securely positioned, and are rated at or above the weight of the vehicle.
- The installer must read the instructions and use all bolts and parts supplied. Use only the parts supplied by ROADMASTER to install this kit.
- Minor modifications are sometimes necessary due to slight vehicle variations, even for the same year, make and model.
- Regardless of year, make and model, a wide range of options for specific applications may or may not interfere with the installation. It is the installer's responsibility to make certain that equipment is not damaged once the suspension solution travels through the full range of motion. Failure to ensure adequate clearance could result in non-warranty property damage, personal injury or even death.

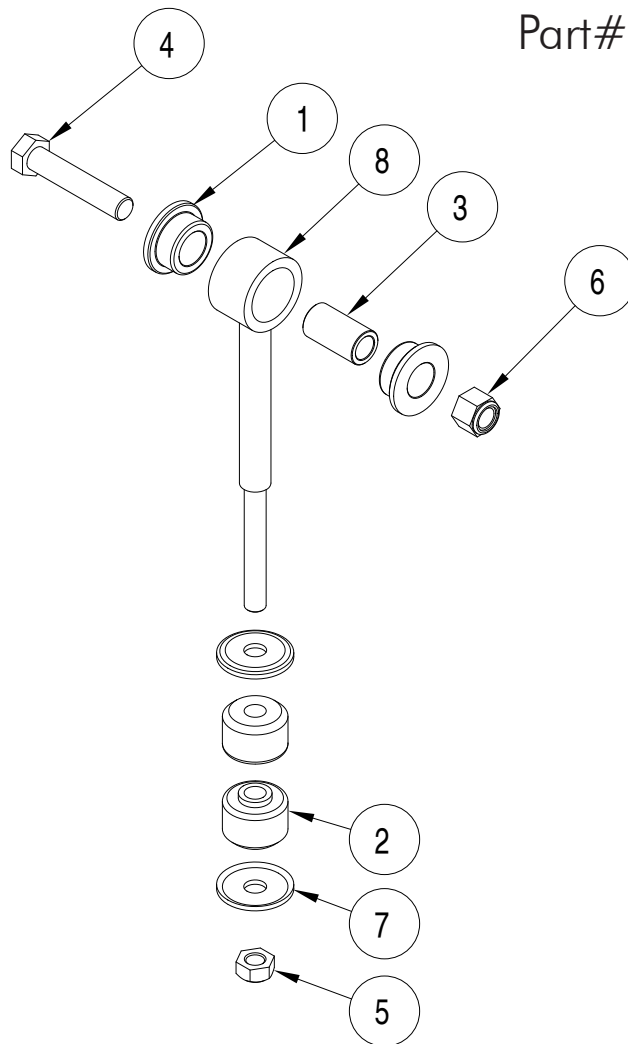
- If running changes were made by the manufacturer after this kit was designed, there may be weldments, braces, gussets, or other structural items which interfere with the installation. It is the installer's responsibility to allow for these running changes without sacrificing the structural integrity of the anti-sway bar. Failure to securely fasten the anti-sway bar could result in property damage, personal injury or even death.
- ROADMASTER will not be responsible for any damage or injury resulting from any modification or alteration.
- Check ALL the fasteners for tightness before and after road testing the vehicle.
- Do not use this document for custom fabrication, as it may not show all parts or structural components.
- Do not use an air impact wrench when re-installing bolts, as stripped threads may result.
- This anti-sway bar is only warranted for the original installation. Installing a used anti-sway bar on another vehicle is not recommended and will void the warranty.

INSTALLATION

The following instructions must be followed in the order listed to ensure a proper installation and to preserve the ROADMASTER warranty.



Part# 590066-00



ITEM	QTY	DESCRIPTION	PART NUMBER
1.....	4	BUSHING	205223-50
2.....	4	BUSHING	205381-00
3.....	2	BUSHING SLEEVE	205522-00
4.....	2	1/2-13 x 2 1/2" BOLT - GRADE 8	350099-80
5.....	2	7/16-14 LOCK NUT	350256-02
6.....	2	1/2-13 NYLON INSERT LOCK NUT.....	350259-00
7.....	4	CUP WASHER	357434-00
8.....	2	END LINK.....	B477
9.....	1	LOCTITE	200544-00

INSTALLATION

The following instructions must be followed in the order listed to ensure a proper installation and to preserve the ROADMASTER warranty.

1. **Remove the old endlinks from both sides of the vehicle.**
2. **Assemble the new endlinks and bushings.**
Assemble the bushings, sleeves, cup washers and other parts as shown in the drawing on page 2.
3. **Mount the new endlinks.**
Reversing the removal, reversing step 1 but using the provided bolts, washers and lock nuts.
4. **Test drive and re-check fasteners.**

WARNING

After road testing, re-check all fasteners for proper tightness — if a fastener has worked loose or fallen off, re-tighten or replace it. Without all kit components properly tightened or in place, the anti-sway bar will not stabilize the vehicle at full capacity, which may cause reduced cornering ability or other reductions in vehicle handling or performance.

Failure to follow these instructions may result in property damage, personal injury or even death.