

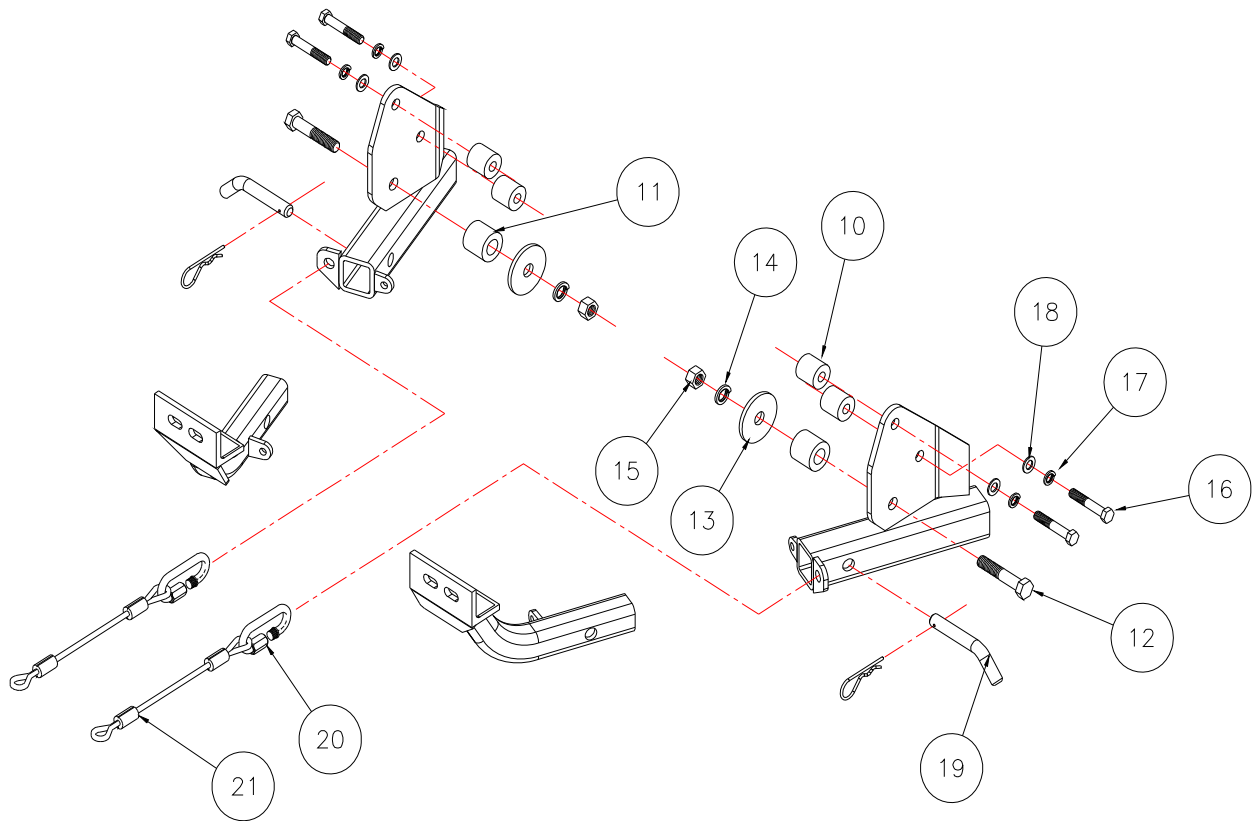


# MOUNTING BRACKET KIT INSTALLATION INSTRUCTIONS

**KIT# 609-1**

03/10/08  
KS

ROADMASTER, Inc. 5602 N.E. Skyport Way Portland, OR 97218 1-800-669-9690 Fax (503) 288-8900 www.roadmasterinc.com



Item	Qty	Length	Width	Name	Material
10	4	1 1/4"		1 1/4" x .375 WALL ROUND TUBE	150096-30
11	2	1 3/8"		1 1/2" x .353 WALL ROUND TUBE	150059-00
12	2	3 1/2"	5/8"	5/8" x 3 1/2" BOLT	350163-00
13	2	5/8"	5/8"	PLATE WASHER	350352-00
14	2	5/8"	5/8"	LOCK WASHER	350313-00
15	2	5/8"	5/8"	NUT	350262-00
16	4	80mm	12mm	M12 x 1.25 x 80mm	
17	4	12mm		M12 LOCK WASHER	355725-00
18	4	12mm		M12 FLAT WASHER	355710-00
19	2			DRAW PIN/SPRING PIN	357035-00
20	2			CABLE CONNECTORS	200008-00
21	2	10"		10" SAFETY CABLES	500646-10

ROADMASTER, INC.



# MOUNTING BRACKET KIT INSTALLATION INSTRUCTIONS

**KIT# 609-1**

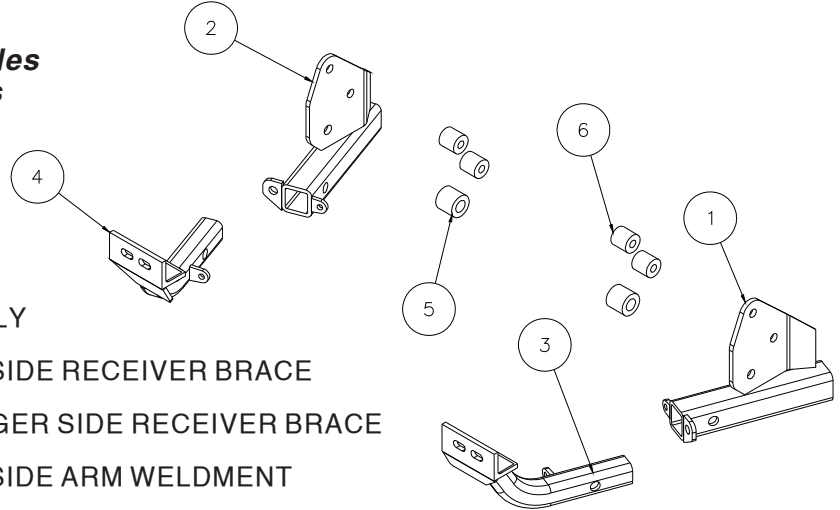
03/10/08

KS

ROADMASTER, Inc. 5602 N.E. Skyport Way Portland, OR 97218 1-800-669-9690 Fax (503) 288-8900 www.roadmasterinc.com

**IMPORTANT:** All brackets **must** be assembled with all the bolts left loose for final adjustment & positioning (before tightening) unless otherwise instructed. All bolts **must** be torqued for proper strength. If more than one bolt is used per fastening point, the diagram may only show one.

- Use flat washers over all slotted holes
- Use lock washers on all fasteners



ITEM	QTY	NAME	ASSEMBLY
1	1	C-000474	DRIVER SIDE RECEIVER BRACE
2	1	C-000475	PASSENGER SIDE RECEIVER BRACE
3	1	C-000476	DRIVER SIDE ARM WELDMENT
4	1	C-000477	PASSENGER SIDE ARM WELDMENT
5	2	A-000855	1 1/2" x 1 3/8" x .353 WALL TUBE
6	4	A-000856	1 1/4" x 1 1/4" x .375 WALL TUBE

ROADMASTER Limited Warranty, including One-Year Conditional Warranty Text and Product Registration Card, in Carton.

## WARNING

- Do not use this document for custom fabrication as it may not show all parts or structural components.
- ROADMASTER will not be responsible for any damage or injury resulting from any modification or alteration.
- The owner must inspect all mounts and brackets before each use for cracks or other signs of fatigue. Also, inspect the fasteners for proper torque, according to the torque chart.
- The owner must check the manufacturer's instructions for the proper procedure(s) to prepare the vehicle for towing. Some vehicles must be equipped with a transmission lube pump, an axle disconnect, driveline disconnect or free-wheeling hubs before they can be towed. Failure to properly equip the vehicle will cause severe damage to the transmission.
- The installer must read the instructions and use all bolts and parts supplied.
- If the towed vehicle has been in an accident, it must be properly repaired before attaching the brackets. Do not install the brackets if any structural frame damage is found. Failure to repair the damage may result in loss of your towed vehicle.
- Some motorhome chassis have such a tight turning radius that you can damage your motorhome, towed vehicle or tow bar while turning sharply. Before getting on the road, test your turning radius in an empty parking lot. Damage that results from turning too sharply is not covered by warranty.
- The driver must not back up the motorhome with the towed vehicle attached or non-warranty damage will occur to your towing system or towed vehicle.
- The safety cables must connect the towing vehicle to the towed vehicle frame to frame, with the cables crossed. Refer to the cable instructions for proper routing.
- Make sure there is enough slack in the safety cables at the motorhome to allow for sharp turns.
- Use caution when handling the tow bar – if your hands, fingers or any part of your body are caught between moving components, they can be pinched, cut or otherwise injured.
- This bracket is designed for use with ROADMASTER tow bars and ROADMASTER adaptors. Using this bracket with other brands, without an approved ROADMASTER adaptor, may result in non-warranty damage or injury.
- Important! This bracket is only warranted for the original installation. Installing a used bracket on another vehicle is not recommended and will void the warranty.
- Upon final installation, the installer must inspect the bracket to ensure adequate clearance, particularly around hoses, AC lines, radiators, etc., or non-warranty damage will result.

**WARNING** Failure to follow these instructions can result in property damage, personal injury or even death.



# MOUNTING BRACKET KIT INSTALLATION INSTRUCTIONS

**KIT# 609-1**

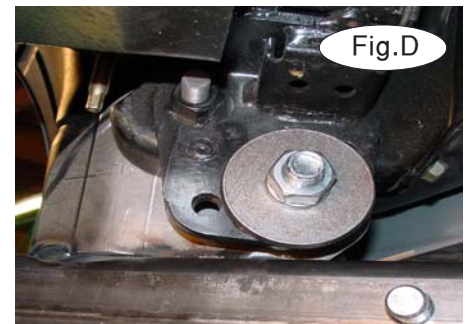
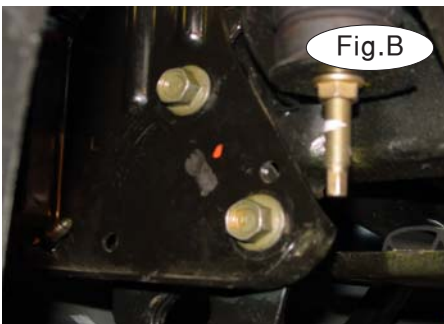
03/10/08  
KS

ROADMASTER, Inc. 5602 N.E. Skyport Way Portland, OR 97218 1-800-669-9690 Fax (503) 288-8900 www.roadmasterinc.com

1. This bracket kit is one of our XL series (Fig.A) which is designed to be partly removable. The kit consists of two main receiver braces, front braces and a hardware pack. The main receiver braces mount below the front bumper fascia to the frame and existing tie down mounts on each side. The front braces insert into the receivers on each side.



2. Start by laying the kit out according to the hardware illustration. This will give you a visual idea of how the kit installs and also confirm that the kit components are present and accounted for.



- Remove the plastic fasteners in the fender splash panels around the front tie down plates then pull down and back for access.
- Remove two bolts per side holding the tie down plates and remove the tie down plates(Fig.B).
- Take a receiver brace and bolt through the top rear holes with two 12mm x 1.25 x 80mm bolts, lock washers, flat washers and 1 1/4" spacers. Be sure and put the spacers between the brace and the mounting area.
- Use the supplied 1 3/8" spacer with a 5/8" x 3 1/2" bolt for the lower mounting bolt on each side (Fig.C). Be sure to use a 5/8" plate washer behind the tie down plate then finish with a lock washer and nut (Fig.D).
- Repeat step 2 and 3 for the remaining side.
- Insert the front braces into the receivers and secure with 5/8" draw pins and spring pins.
- Align the braces then tighten all the mounting bolts to the torque specifications below.
- Reinstall the splash shield fasteners in step 3.
- Install the tow bar according to the manufacturer's instructions.

## BOLT TORQUE REQUIREMENTS

Note: The torque values represented below are intended as general guidelines. Torque requirements for specific applications may vary. Roadmaster does not warrant this information to be accurate for all applications and disclaims all liability for any claims or damages which may result from its use.

STANDARD BOLTS			METRIC BOLTS			METRIC BOLTS		
Thread Size	Grade	Torque	Thread Size	Grade	Plated / Unplated	Thread Size	Grade	Plated / Unplated
5/16	5	13 ft./lb.	8mm-1.0	8.8	20 ft./lb. 18 ft./lb.	12mm-1.25	8.8	70 ft./lb. 65 ft./lb.
3/8	5	23 ft./lb.	8mm-1.25	8.8	19 ft./lb. 18 ft./lb.	12mm-1.5	8.8	66 ft./lb. 61 ft./lb.
7/16	5	37 ft./lb.	10mm-1.25	8.8	38 ft./lb. 36 ft./lb.	12mm-1.75	8.8	65 ft./lb. 60 ft./lb.
1/2	5	56 ft./lb.	10mm-1.5	8.8	37 ft./lb. 35 ft./lb.	14mm-2.0	8.8	104 ft./lb. 97 ft./lb.
5/8	5	150 ft./lb.						

All illustrations and specifications contained herein are based on the latest information available at the time of publication approval. ROADMASTER, INC. reserves the right to make changes at any time without notice in material, specification and models or to discontinue models.