

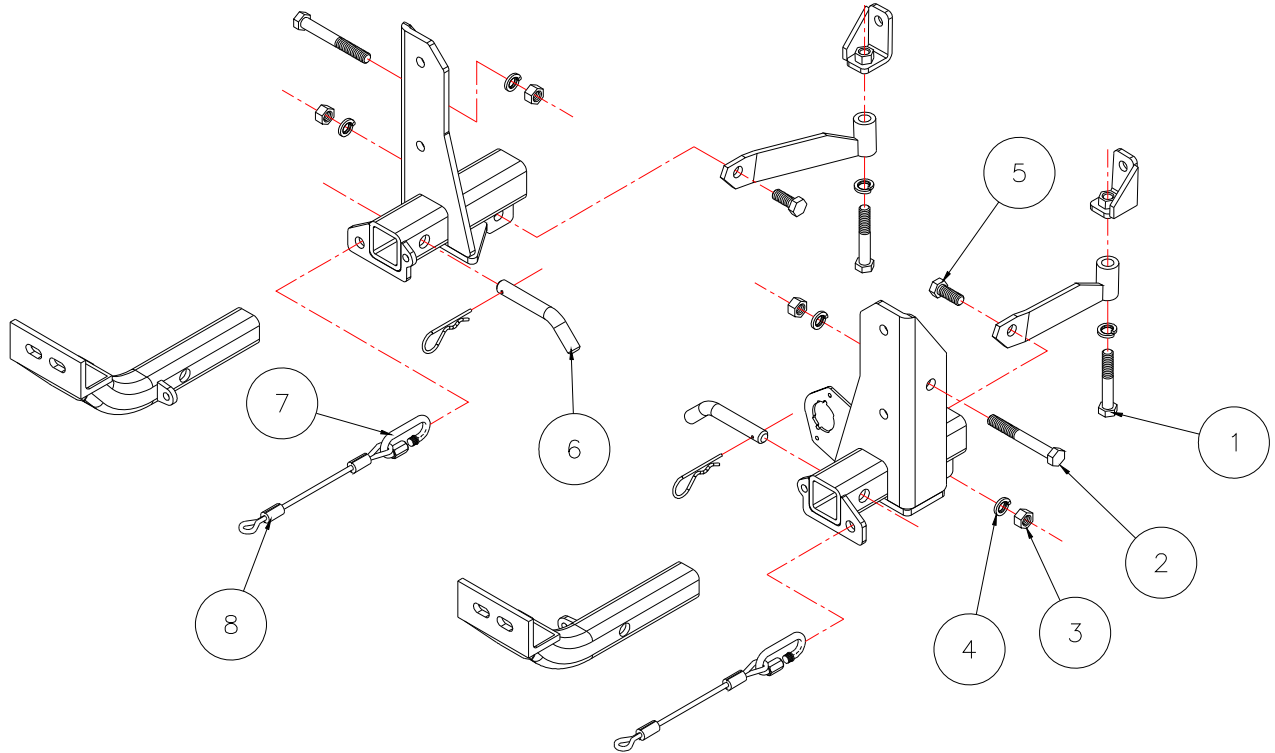


BASEPLATE KIT INSTALLATION INSTRUCTIONS

KIT# 820-1

10/29/03

ROADMASTER, Inc. 6110 NE 127th Ave. Vancouver, WA 98682 1-800-669-9690 fax 360-735-9300 www.roadmasterinc.com



HARDWARE

ITEM	QTY	Length	Width	NAME	PART NO.
1	2	3"	1/2"	BOLT	350101-00
2	2	4"	1/2"	BOLT	350105-00
3	6	1/2"		NUT	350258-00
4	6	1/2"		LOCK WASHER	350309-00
5	2	1 1/4"	1/2"	BOLT	350094-00
6	2			DRAW PIN / SPRING PIN	357035-00
7	2			CABLE CONNECTORS	200008-00
8	2	10"		SAFETY CABLES	500646-10

ROADMASTER, INC.



BASEPLATE KIT INSTALLATION INSTRUCTIONS

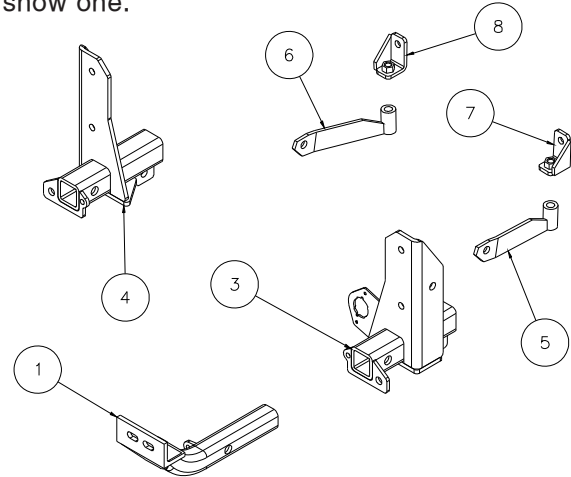
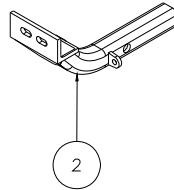
KIT# 820-1

10/29/03

ROADMASTER, Inc. 6110 NE 127th Ave. Vancouver, WA 98682 1-800-669-9690 fax 360-735-9300 www.roadmasterinc.com

IMPORTANT: All brackets **must** be assembled with all the bolts left loose for final adjustment & positioning (before tightening) unless otherwise instructed. All bolts **must** be torqued for proper strength. If more than one bolt is used per fastening point, the diagram may only show one.

- Use flat washers over all slotted holes
- Use lock washers on all fasteners



ITEM	QTY	PART NO.	ASSEMBLY
1	1	C-000544	DRIVER SIDE ARM WELDMENT
2	1	C-000545	PASSENGER SIDE ARM WELDMENT
3	1	C-000546	DRIVER SIDE RECEIVER BRACE WELDMENT
4	1	C-000547	PASSENGER SIDE RECEIVER BRACE WELDMENT
5	1	C-000548	DRIVER SIDE LOWER REAR BRACE WELDMENT
6	1	C-000549	PASSENGER SIDE LOWER REAR BRACE WELDMENT
7	1	C-000550	DRIVER SIDE REAR BRACE WELDMENT
8	1	C-000551	PASSENGER SIDE REAR BRACE WELDMENT

WARNING

Failure to follow these instructions can result in property damage, personal injury or even death.

- Installation of most mounting brackets requires moderate mechanical aptitude and skills. We strongly recommend professional installation by an experienced installer.
- The installer must read the instructions and use all bolts and parts supplied. When the instructions require the reuse of factory bolts, thread lock and/or lock washers must also be used. Failure to securely fasten the bracket could result in loss of the towed vehicle.
- Do not use this document for custom fabrication, as it may not show all parts or structural components. Custom fabrication or an attempt to copy this bracket design could result in loss of the towed vehicle.
- Every 3,000 miles, the owner must inspect the fasteners for proper torque, according to the bolt torque requirements chart on the last page of these instructions. The owner must also inspect all mounts and brackets for cracks or other signs of fatigue every 3,000 miles. Failure to do so could result in loss of the towed vehicle.
- The owner must check the vehicle manufacturer's instructions for the proper procedure(s) to prepare the vehicle for towing. Some vehicles must be equipped with a transmission lube pump, an axle disconnect, driveline disconnect or free-wheeling hubs before they can be towed. Failure to properly equip the vehicle will cause severe damage to the transmission.
- If running changes were made by the vehicle manufacturer after this bracket was designed, some bolts or other fasteners in the hardware pack may no longer be the correct size. It is the installer's responsibility to verify that the bracket is securely fastened to the vehicle and fitted with the correct hardware to account for these changes. Failure to

securely fasten the bracket could result in loss of the towed vehicle.

- If the towed vehicle has been in an accident, it must be properly repaired before attaching the bracket. **Do not install the bracket if any structural frame damage is found.** Failure to repair the damage could result in the loss of the towed vehicle.
- Some motorhome chassis have such a tight turning radius that you can damage your motorhome, towed vehicle, tow bar or bracket while turning sharply. **Before getting on the road, test your turning radius in an empty parking lot.** Turning too sharply could result in non-warranty damage to towing system, motorhome and/or towed vehicle.
- Do not back up with the towed vehicle attached or non-warranty damage will occur to your towing system, motorhome and/or towed vehicle.
- The safety cables must connect the towing vehicle to the towed vehicle frame to frame, with the cables crossed, with enough slack for sharp turns. Refer to the cable instructions for proper routing. Failure to leave enough slack in the safety cables, or failure to connect the safety cables frame to frame, will result in the loss of the towed vehicle.
- This bracket is designed for use with ROADMASTER tow bars and ROADMASTER adaptors only. **Using this bracket with other brands, without an approved ROADMASTER adaptor, may result in non-warranty damage or injury.**
- Upon final installation, the installer must inspect the bracket to ensure adequate clearance, particularly around hoses, air conditioner lines, radiators, etc., or non-warranty damage to the towed vehicle will result.
- This bracket is only warranted for the original installation. Installing a used bracket on another vehicle is not recommended and will void the warranty.

ROADMASTER, INC.



BASEPLATE KIT INSTALLATION INSTRUCTIONS

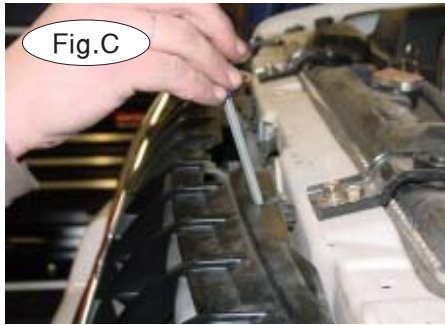
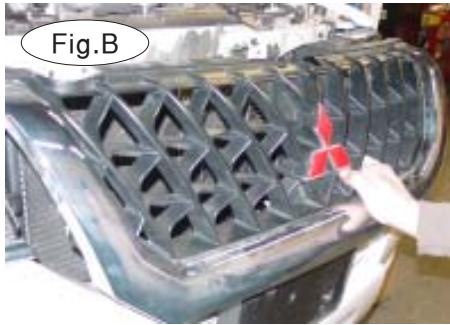
KIT# 820-1

10/29/03

ROADMASTER, Inc. 6110 NE 127th Ave. Vancouver, WA 98682 1-800-669-9690 fax 360-735-9300 www.roadmasterinc.com

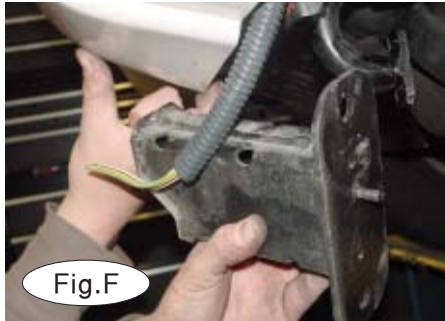
R O A D M A S T E R , I N C .

This bracket kit is one of our XL series, which is designed to be partly removable. The kit consists of the main receiver brace, front brace and a hardware pack. The main receiver brace mounts behind the front bumper fascia and lower grille. The front brace inserts through the lower grille under the bumper into the receiver brace on each side (Fig. A). Start by laying the kit out according to the illustration. This will give you a visual idea of how the kit installs and also confirm that the kit components are present and accounted for.



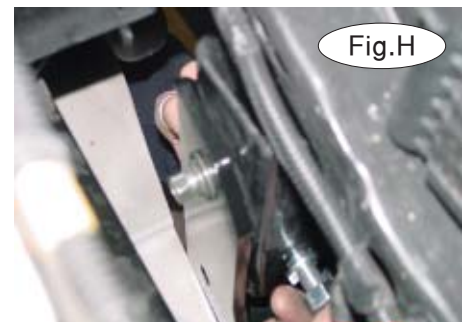
1. **Important:** please use all supplied bolts and parts and read all instructions carefully before beginning this installation. The majority of questions you may have can be answered within the text, and proper installation will ensure safe and secure travel. Now, begin the installation. Start by removing the front grille (Fig.B). Depress the top grille fasteners as shown in (Fig.C) and pull forward to remove. This will provide access for the next step.

2. Remove two (12mm head) bolts on each side holding the front frame extensions in place (Fig.D,E), then pull forward on the bottom of the fascia and pull the extensions out (Fig.F). The receiver braces will replace the extensions.



3. Pull forward on the lower fascia and install the receiver braces on the front of the frame using the bolts removed in step 2 (Fig.G,H).

4. Bolt through the sides of the receiver braces and frames with a 1/2" x 4" bolts, lock washers and nuts (Fig.H). Note: if needed, ream this frame hole.



All illustrations and specifications contained herein are based on the latest information available at the time of publication approval. ROADMASTER, INC. reserves the right to make changes at any time without notice in material, specification and models or to discontinue models.



BASEPLATE KIT INSTALLATION INSTRUCTIONS

KIT# 820-1

10/29/03

ROADMASTER, Inc. 6110 NE 127th Ave. Vancouver, WA 98682 1-800-669-9690 fax 360-735-9300 www.roadmasterinc.com



Fig.I



Fig.J



Fig.K

5. Remove the rear bolts from the skid pan and let the pan drop down slightly then remove rear skid pan mounting braces (Fig.I).
6. Use the original bolts to replace the rear pan braces with the heavier rear braces provided in the kit (Fig.J,K).
7. Bolt the lower rear braces in to the new braces sandwiching the rear of the pan between the braces with a 1/2" x 3" bolts and lock washers (Fig.K).
8. Bolt the lower rear braces to the receiver braces with 1/2" x 1 1/4" bolts, lock washers and nuts (Fig.L).
9. Torque all mounting bolts to the specifications on the next page.
10. Replace the grille reversing steps 1 and 2.



Fig.L



Fig.M

11. Insert the front brace into the receiver tubes and pin with 5/8" draw pins and 1/8" spring pins (Fig.M).
12. Install the tow bar according to the manufacturer's instructions and torque all mounting bolts to the specifications below.
13. Attach one end of the included safety cables to the lower front hole in the side mounting plate on each side of the receiver brace with the included cable connectors. Connect the other end to the tow vehicle's safety cables and the tow bar. A wiring plug connector bracket has been provided for your convince near the driver's side receiver.

BOLT TORQUE REQUIREMENTS

Note: The torque values represented below are intended as general guidelines. Torque requirements for specific applications may vary. Roadmaster does not warrant this information to be accurate for all applications and disclaims all liability for any claims or damages which may result from its use.

STANDARD BOLTS			METRIC BOLTS			METRIC BOLTS		
Thread Size	Grade	Torque	Thread Size	Grade	Plated / Unplated	Thread Size	Grade	Plated / Unplated
5/16	5	13 ft./lb.	8mm-1.0	8.8	20 ft./lb. 18 ft./lb.	12mm-1.25	8.8	70 ft./lb. 65 ft./lb.
3/8	5	23 ft./lb.	8mm-1.25	8.8	19 ft./lb. 18 ft./lb.	12mm-1.5	8.8	66 ft./lb. 61 ft./lb.
7/16	5	37 ft./lb.	10mm-1.25	8.8	38 ft./lb. 36 ft./lb.	12mm-1.75	8.8	65 ft./lb. 60 ft./lb.
1/2	5	56 ft./lb.	10mm-1.5	8.8	37 ft./lb. 35 ft./lb.	14mm-2.0	8.8	104 ft./lb. 97 ft./lb.
5/8	5	150 ft./lb.						

All illustrations and specifications contained herein are based on the latest information available at the time of publication approval. ROADMASTER, INC. reserves the right to make changes at any time without notice in material, specification and models or to discontinue models.