

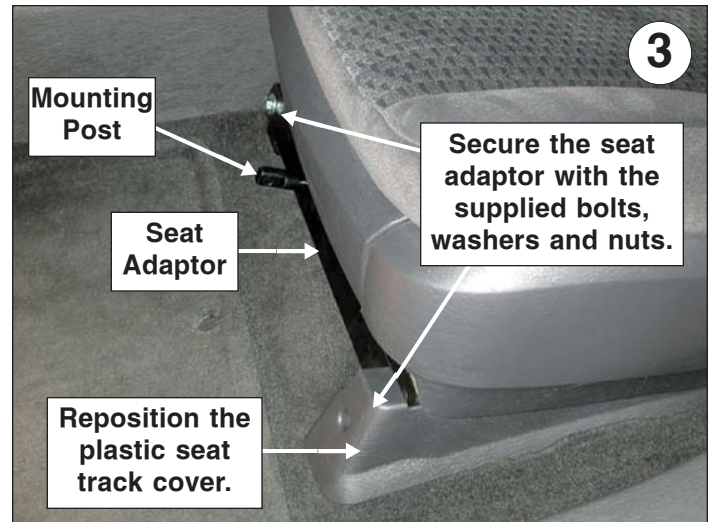
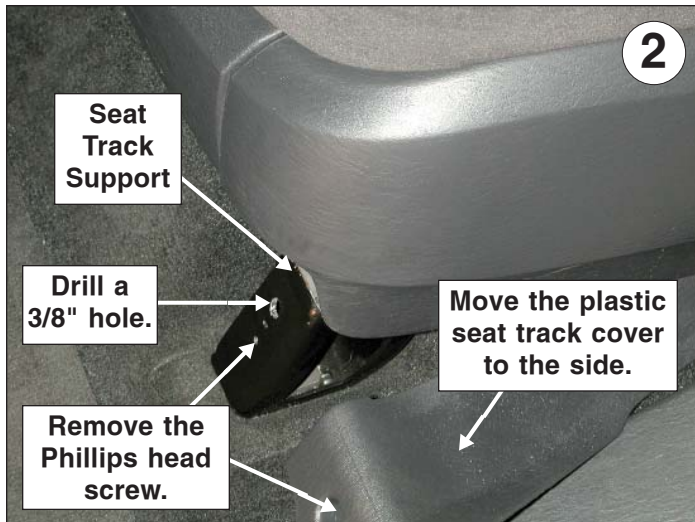
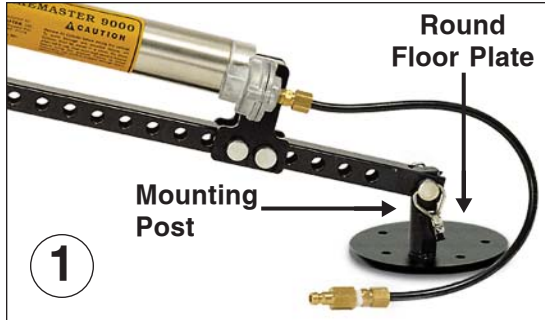
SEAT ADAPTOR KIT #88117 INSTALLATION INSTRUCTIONS



3015-01

ALL SPECIFICATIONS ARE SUBJECT TO CHANGE WITHOUT NOTICE

ROADMASTER, Inc. 6110 NE 127th Ave. Vancouver, WA 98682 1-800-669-9690 fax 360-735-9300 www.roadmasterinc.com



1. Before installing the seat adaptor, the mounting post (that was included with your BrakeMaster system) must be removed from the round plate (Fig.1). Secure the round plate in a vise. Use a wrench to loosen the mounting post, while holding the bolt with an Allen wrench. Don't try to turn the Allen bolt with the Allen wrench, as you might damage the wrench or bolt. Use a 1/2" open-end wrench to twist the mounting post off. Then, secure the mounting post to the center of the seat adaptor, using the included 3/8" x 3/4" bolt and 3/8" lock washer.
2. Remove the Phillips head screw holding the plastic seat track cover, and move the seat track cover to the side. Line up the seat adaptor to the two seat track supports – top to top and left to right. With a punch, mark the center of the drilled holes in the seat support on both seat track supports. Drill a 3/8" hole through both points.
3. The mounting post is slightly offset, to align with the brake pedal. Check the alignment of the mounting post to the brake pedal, then set the seat adaptor over the holes you drilled. Secure the seat adaptor in place with one of the supplied 3/8" x 1 1/4" bolts, flat washers and nuts, on each side. Reposition the plastic seat track cover, and secure it with the Phillips head screw you removed in the preceding step.

Parts List

- (1) 3/8" x 3/4" bolt
- (1) 3/8" lock washer
- (2) 3/8" x 1 1/4" bolts
- (2) 3/8" flat washers
- (2) 3/8" nuts



WARNING

Failure to follow these instructions can result in property damage, personal injury or even death.