

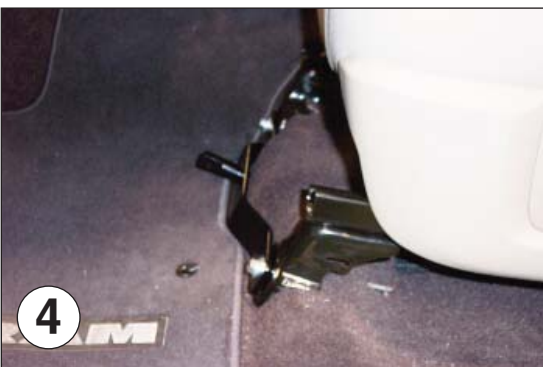
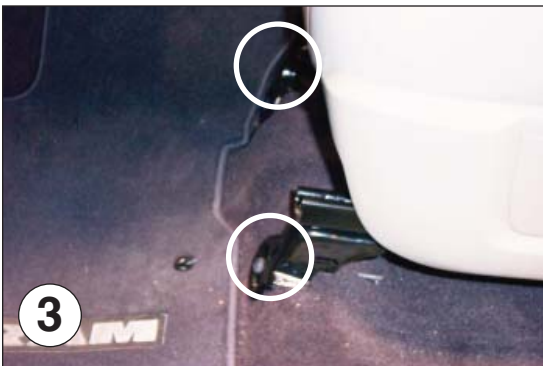
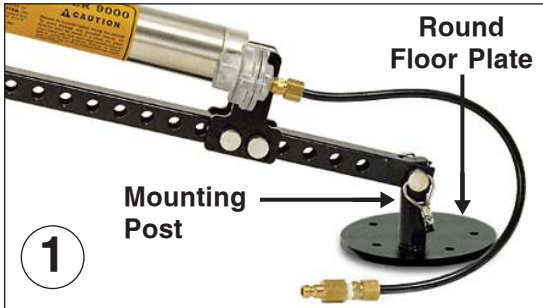
SEAT ADAPTOR KIT #88272 INSTALLATION INSTRUCTIONS



4305-00 02-09

ALL SPECIFICATIONS ARE SUBJECT TO CHANGE WITHOUT NOTICE

ROADMASTER, Inc. 6110 NE 127th Ave. Vancouver, WA 98682 1-800-669-9690 fax 360-735-9300 www.roadmasterinc.com



Instructions

1. Before installing the seat adaptor, the mounting post (which was included with your BrakeMaster system) must be removed from the round plate (Fig.1). First, secure the round plate in a vise. Use a wrench to loosen the mounting post, while holding the bolt with an Allen wrench. Don't try to turn the Allen bolt with the Allen wrench, as you might damage the wrench or bolt. Use a 1/2" open-end wrench to twist the mounting post off. Then, secure the mounting post to the center of the seat adaptor using the included 3/8" x 3/4" bolt and 3/8" lock washer.

2. Remove the front left side plastic seat track cover (Fig.2). Remove the two 15mm front seat track bolts (Fig.3).

3. Place a 1" x 3/8" spacer over the top of each seat track bolt hole. Using the supplied 8mm x 1.25 x 40mm bolts, fender washers and lock washers, bolt through the seat adaptor, pipe spacers, seat track and into the existing weld nuts in the floor (Fig.4).

Note: the mounting post on the adaptor (Fig.1) must be directly in line to the brake pedal. The BrakeMaster air cylinder may jam or function incorrectly if the mounting post is not directly in line with the brake pedal.

Tighten the bolts to 19 ft./lbs. or 228 in./lbs.

Parts List

- | | |
|-----------------------------|------------------------|
| (1) 3/8" x 3/4" bolt | (2) 8mm fender washers |
| (1) 3/8" lock washer | (2) 8mm lock washers |
| (2) 8mm x 1.25 x 40mm bolts | |



WARNING

Failure to follow these instructions can result in property damage, personal injury or even death.

1-800-669-9690

SEAT ADAPTOR KIT #88272 INSTALLATION INSTRUCTIONS



4305-00 02-09

ALL SPECIFICATIONS ARE SUBJECT TO CHANGE WITHOUT NOTICE

ROADMASTER, Inc. 6110 NE 127th Ave. Vancouver, WA 98682 1-800-669-9690 fax 360-735-9300 www.roadmasterinc.com




continued from preceding page

4. The seat track cover you removed in step 1 will need to be left off or trimmed. If you choose to trim it, use the yellow lines in Figure 5 as a guide for trimming. Note: the plastic seat track cover will need to be secured with contact adhesive (Fig.6).

5. Attach the air cylinder to the seat adaptor.



 **WARNING** Failure to follow these instructions can result in property damage, personal injury or even death.