

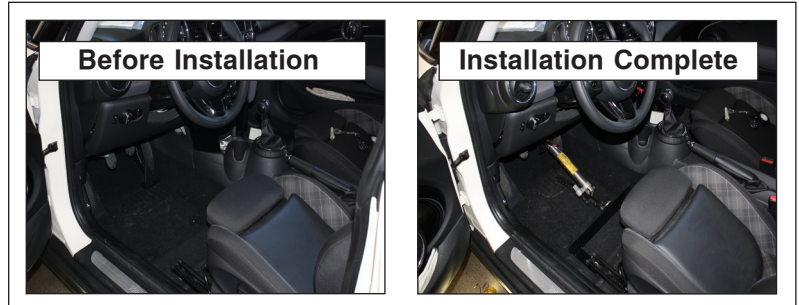
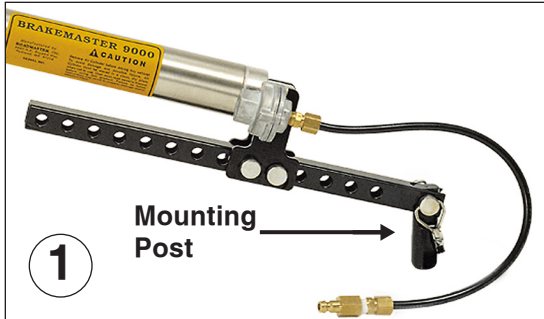
SEAT ADAPTER KIT #88323 INSTALLATION INSTRUCTIONS



5570-00

ALL SPECIFICATIONS ARE SUBJECT TO CHANGE WITHOUT NOTICE

ROADMASTER, Inc. 6110 NE 127th Ave. Vancouver, WA 98682 360-896-0407 fax 360-735-9300 www.roadmasterinc.com



Instructions



Parts List

- (1) 3/8" lock washer
- (1) 3/8" x 3/4" bolt

1. Locate the mounting post (Fig.1) that came with your BrakeMaster. If needed, order part number 450596. Now, secure the post to the center of the seat adapter using the included 3/8" x 3/4" bolt and 3/8" lock washer. If the hole is countersunk, use the Allen head bolt and lock washer included with this kit.
2. Push the seat all the way back and remove the two T50 Torx screws from the front seat track (Fig.2).
3. Lift the seat up and pinch the seat adapter between the seat tracks and the floor and then replace the two bolts you removed in the previous step (Fig.3). *Note:* position the adapter so that the mounting post (Fig.1) is directly in line to the brake pedal. The BrakeMaster air cylinder may jam or function incorrectly if the mounting post is not directly in line with the brake pedal.
4. Attach the BrakeMaster to the brake pedal and to the seat adapter. Adjust the length of the air cylinder assembly per the BrakeMaster installation instructions, ensuring that the BrakeMaster is pulling back on the brake pedal so the pedal is only depressed when the brakes are engaged at the motorhome. Failure to adjust the assembled length of the BrakeMaster may result in severe brake system damage and/or complete failure of the brakes. depressed when the brakes are engaged at the motorhome. Failure to adjust the assembled length of the BrakeMaster may result in severe brake system damage and/or complete failure of the brakes.

 **WARNING** Failure to follow these instructions can result in property damage, personal injury or even death.